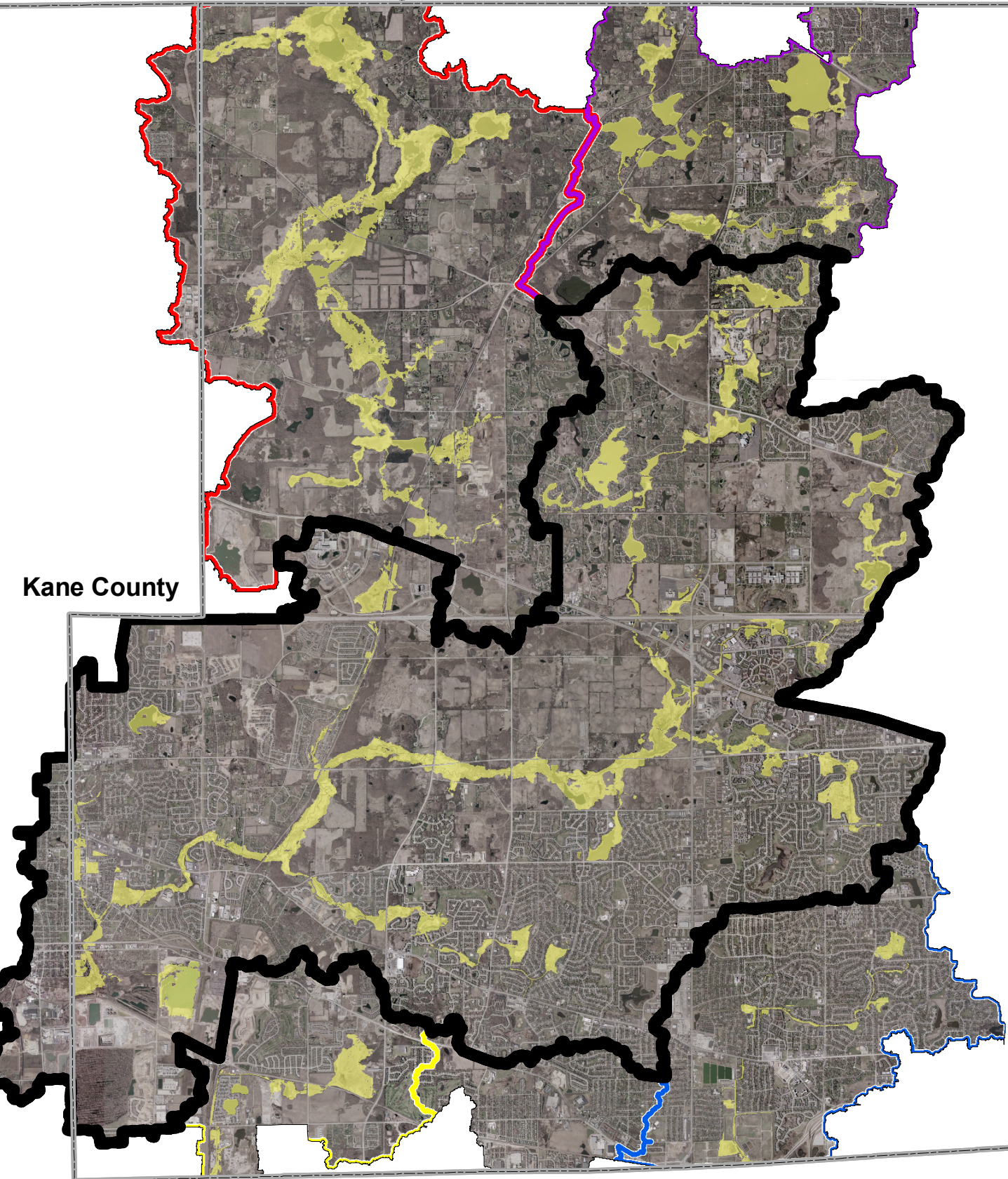


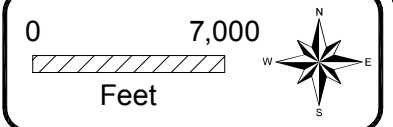
McHenry County

Lake County



Kane County

DuPage County



LEGEND

- County Boundaries
- Riparian Areas
- Flint Creek Watershed Boundary
- Brewster Creek Watershed Boundary
- Spring Creek Watershed Boundary
- West Branch Dupage River Watershed Boundary
- Poplar Creek Watershed Boundary

Hey and Associates, Inc.
 Water Resources, Wetlands and Ecology
 6321 N. AVONDALE AVENUE, SUITE A-211
 CHICAGO, IL 60631
 PHONE: (773) 792-8510
 FAX: (773) 792-8512

Poplar Creek
 Watershed Study Area
 Detailed Watershed Plan

Poplar Creek
 Watershed Study Area
 Riparian Areas

Figure 2.3.7