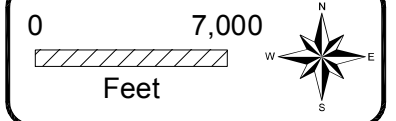
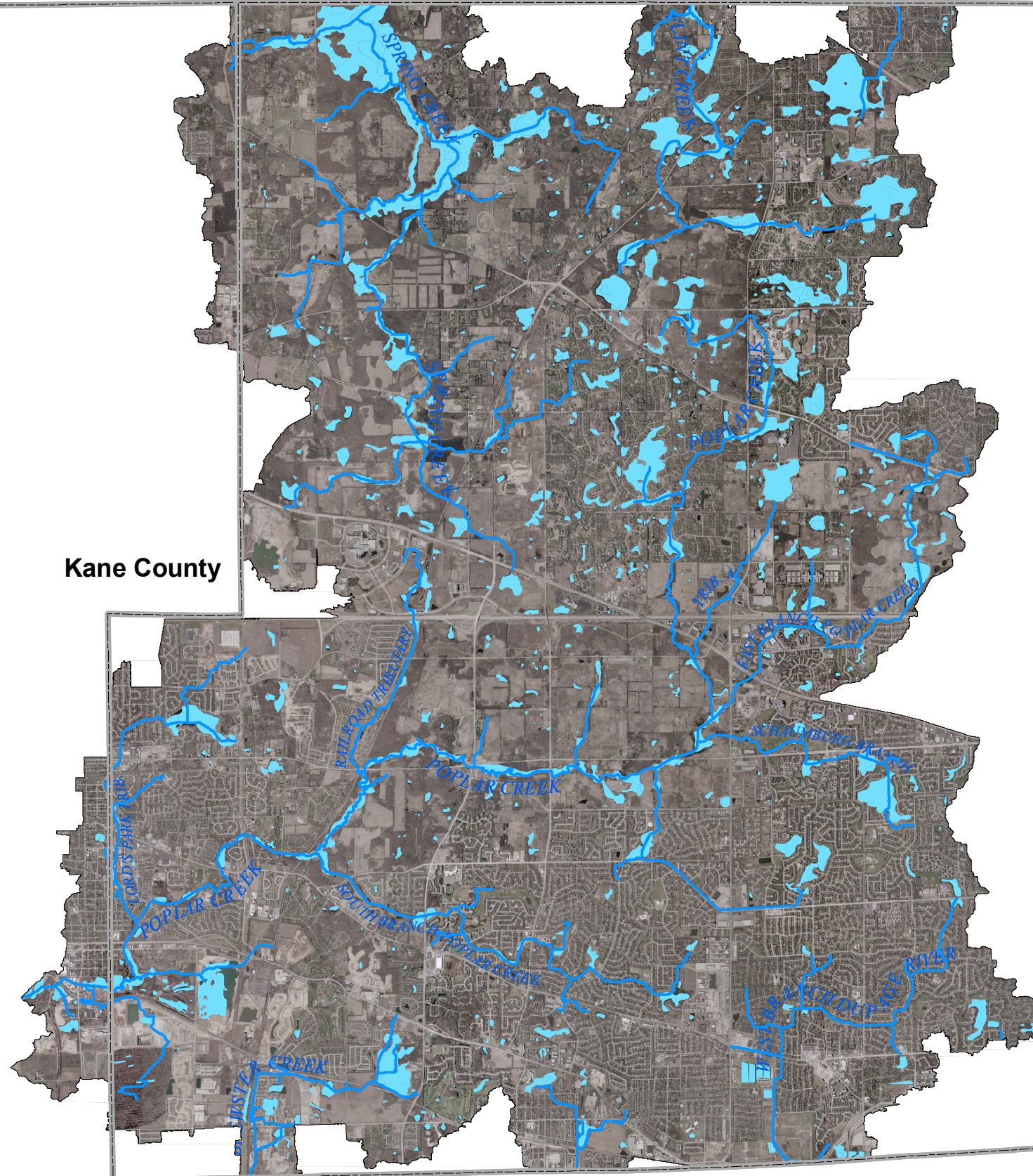


McHenry County




Lake County

Kane County

DuPage County



LEGEND

-  County Boundaries
-  River/Stream
-  Wetlands

Hey and Associates, Inc.
Water Resources, Wetlands and Ecology

6321 N. AVONDALE AVENUE, SUITE A-211
CHICAGO, IL 60631
PHONE: (773) 792-8510
FAX: (773) 792-8512

Poplar Creek
Watershed Study Area
Detailed Watershed Plan

Poplar Creek
Watershed Study Area
National Wetland
Inventory

Figure 2.3.6