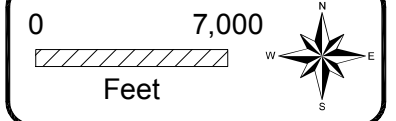
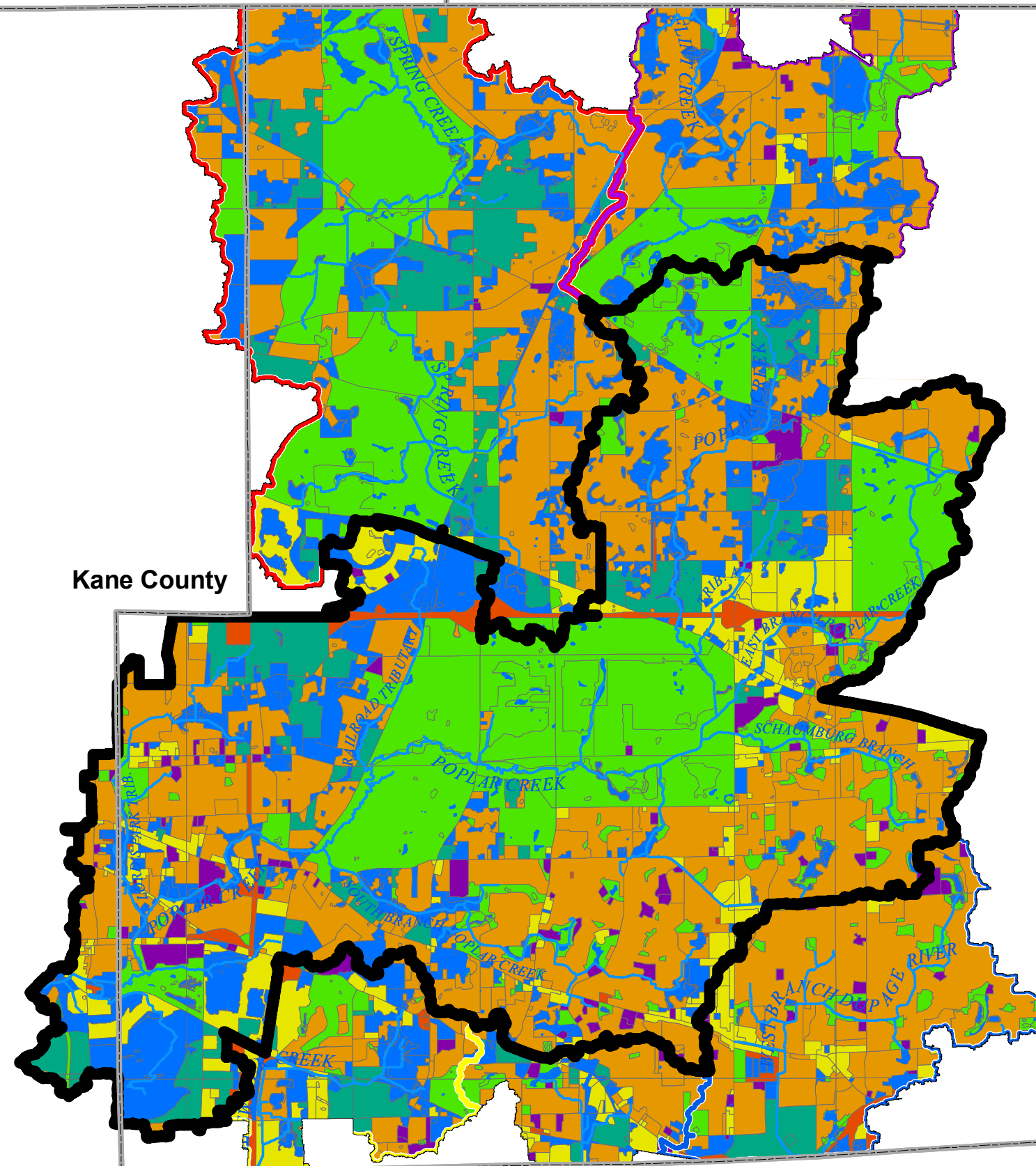


McHenry County

Lake County

Kane County

DuPage County



LEGEND

- County Boundaries
- River/Stream
- Flint Creek Watershed Boundary
- Brewster Creek Watershed Boundary
- Spring Creek Watershed Boundary
- West Branch Dupage River Watershed Boundary
- Poplar Creek Watershed Boundary
- Landuse Category**
- Agricultural
- Commercial/Industrial
- Forest/Open Land
- Institutional
- Residential
- Transportation/Utility
- Water/Wetland

Hey and Associates, Inc.  
Water Resources, Wetlands and Ecology

6321 N. AVONDALE AVENUE, SUITE A-211  
CHICAGO, IL 60631  
PHONE: (773) 792-8510  
FAX: (773) 792-8512

Poplar Creek  
Watershed Study Area  
Detailed Watershed Plan

Poplar Creek  
Watershed Study Area  
Land Use

Figure 2.3.5