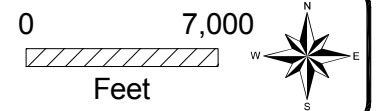
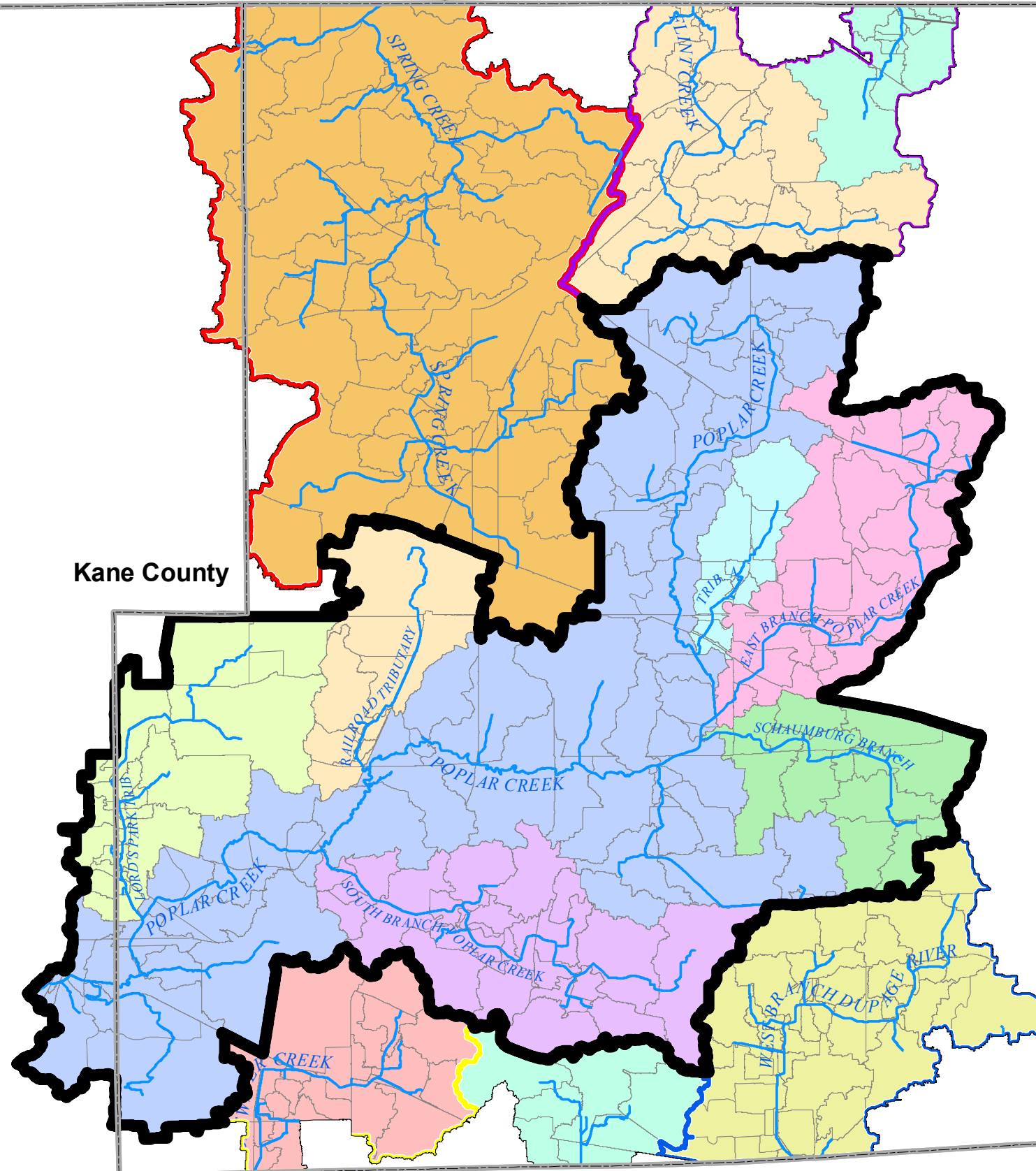


McHenry County

Lake County

Kane County

DuPage County



LEGEND

- County Boundaries
- River/Stream
- Flint Creek Watershed Boundary
- Brewster Creek Watershed Boundary
- West Branch Dupage River Watershed Boundary
- Spring Creek Watershed Boundary
- Poplar Creek Watershed Boundary
- Subbasins

Hey and Associates, Inc.
Water Resources, Wetlands and Ecology

6321 N. AVONDALE AVENUE, SUITE A-211
CHICAGO, IL 60631
PHONE: (773) 792-8510
FAX: (773) 792-8512

Poplar Creek
Watershed Study Area
Detailed Watershed Plan

Poplar Creek Watershed
Study Area
Subwatersheds

Figure 2.3.2