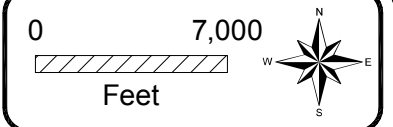
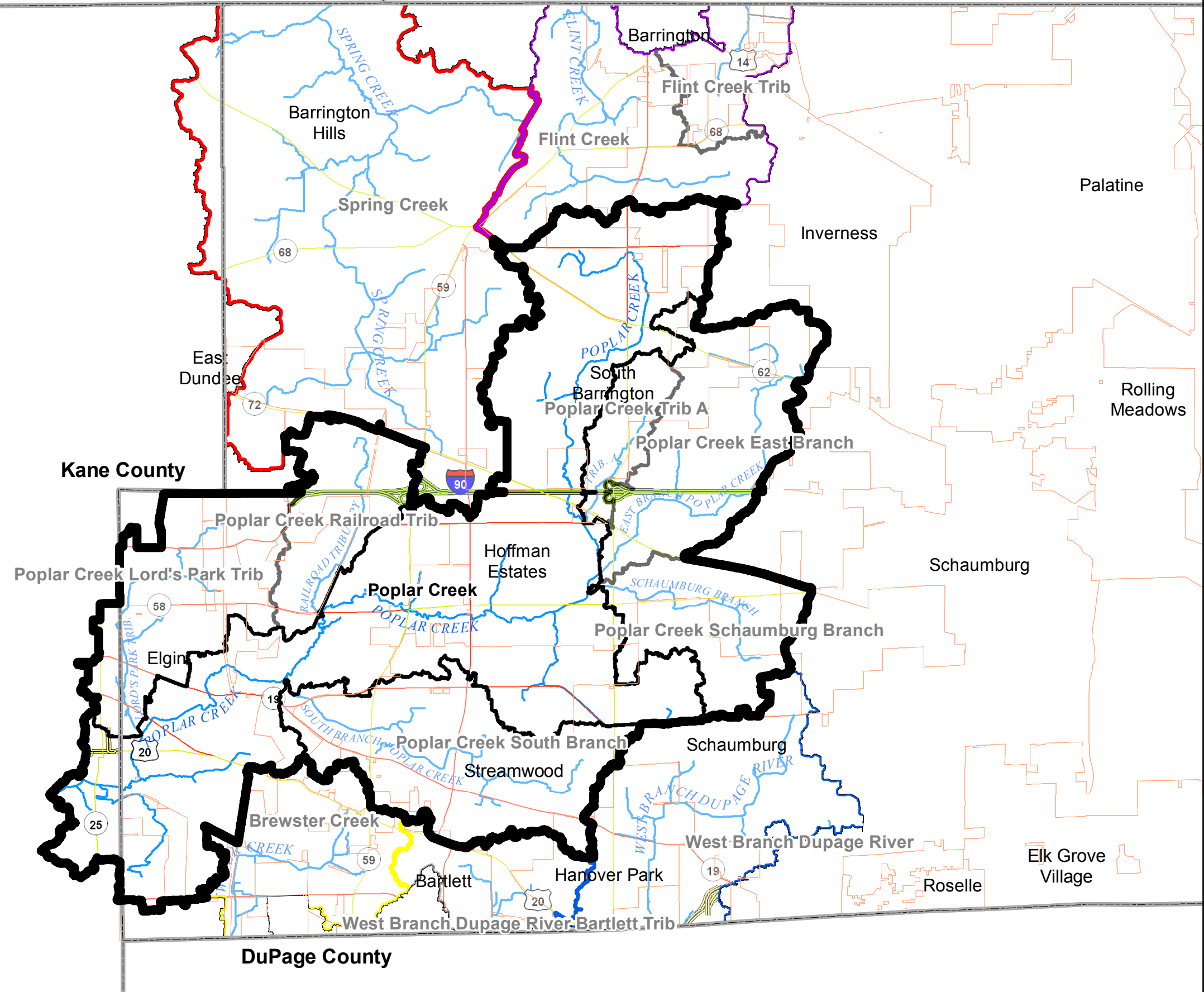


McHenry County

Lake County

Kane County

DuPage County



LEGEND

- County Boundaries
- Municipal Boundaries
- Flint Creek Watershed Boundary
- Brewster Creek Watershed Boundary
- Spring Creek Watershed Boundary
- West Branch Dupage River Watershed Boundary
- Poplar Creek Watershed Boundary
- Freeway Non-Interstate
- Interstate
- Minor Arterial (Urban)
- Other Principal Arterial
- Political Township
- River/Stream
- Minor Watershed Boundaries

Hey and Associates, Inc.
 Water Resources, Wetlands and Ecology
 6321 N. AVONDALE AVENUE, SUITE A-211
 CHICAGO, IL 60631
 PHONE: (773) 792-8510
 FAX: (773) 792-8512

Poplar Creek
 Watershed Study Area
 Detailed Watershed Plan

Poplar Creek Watershed
 Study Area Overview

Figure ES.1