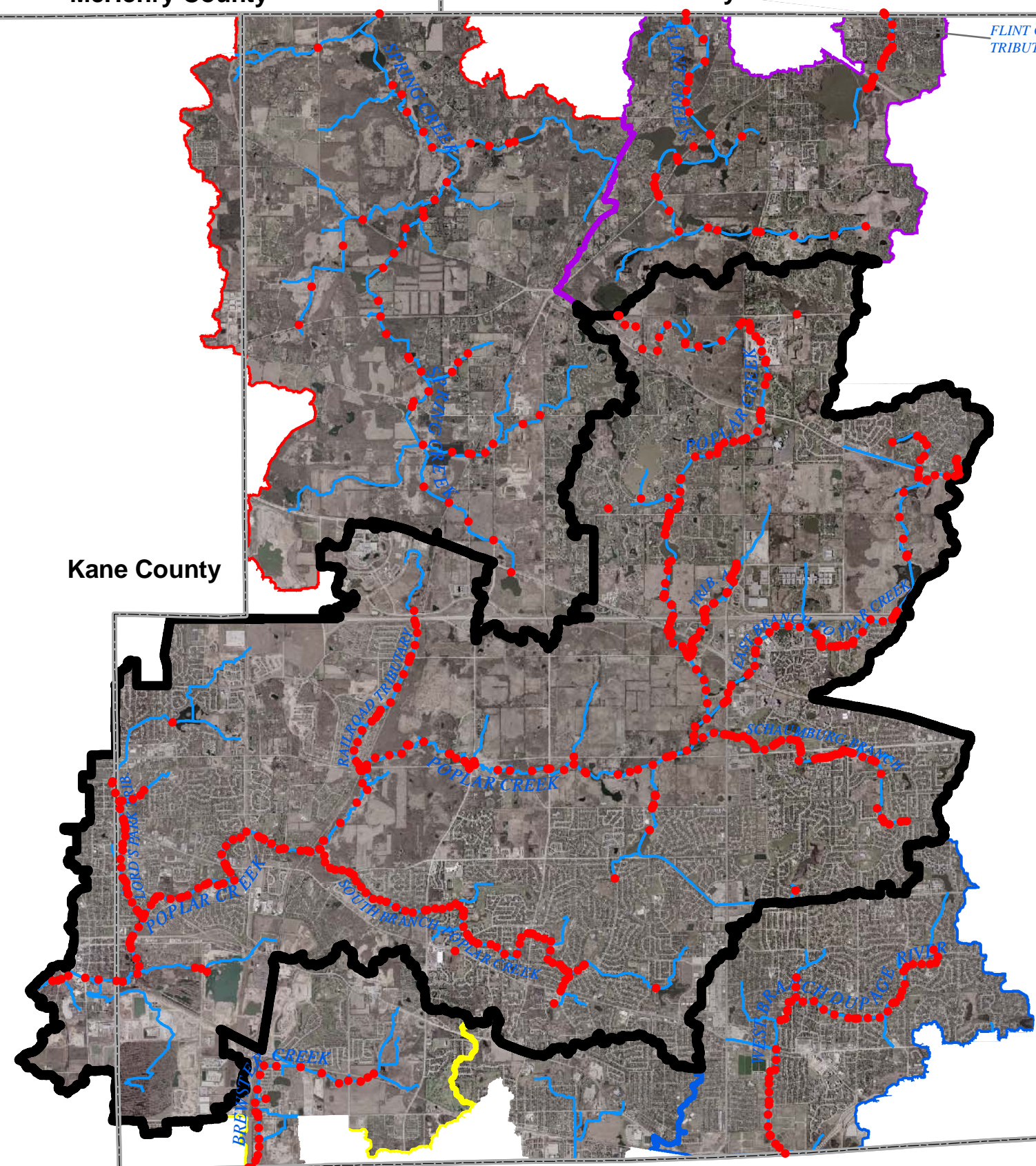


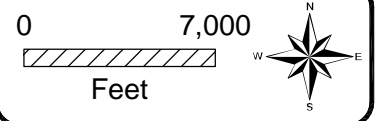
McHenry County

Lake County



Kane County

DuPage County



LEGEND

- Survey Points
- ▭ County Boundaries
- ~ River/Stream
- ▭ Poplar Creek Watershed Boundary
- ▭ Flint Creek Watershed Boundary
- ▭ Brewster Creek Watershed Boundary
- ▭ Spring Creek Watershed Boundary
- ▭ West Branch Dupage River Watershed Boundary

Hey and Associates, Inc.
Water Resources, Wetlands and Ecology

6321 N. AVONDALE AVENUE, SUITE A-211
CHICAGO, IL 60631
PHONE: (773) 792-8510
FAX: (773) 792-8512

Poplar Creek
Watershed Study Area
Detailed Watershed Plan

Poplar Creek
Watershed Study Area
Survey Points

Appendix D