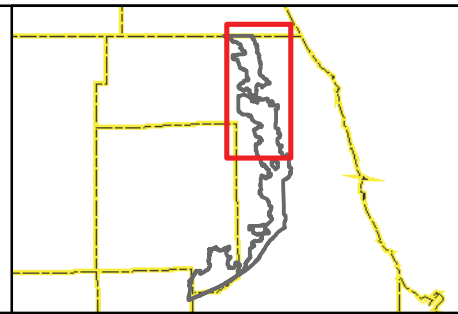


- 100-Year Storm Event Flood Inundation Without Project
- Reservoir
- Channel Improvements
- Culvert/Bridge Modification
- Levee/Floodwall

- Approximate Creek Channel Location
- Municipal Boundary
- Watershed Boundary

- Problem Areas**
- Modeled
  - Regional



CLIENT:  
**METROPOLITAN WATER RECLAMATION DISTRICT OF GREATER CHICAGO**

TITLE:  
**LOWER DES PLAINES RIVER DETAILED WATERSHED PLAN  
 DES PLAINES RIVER WATERSHED NORTH TRIBUTARY OVERVIEW**

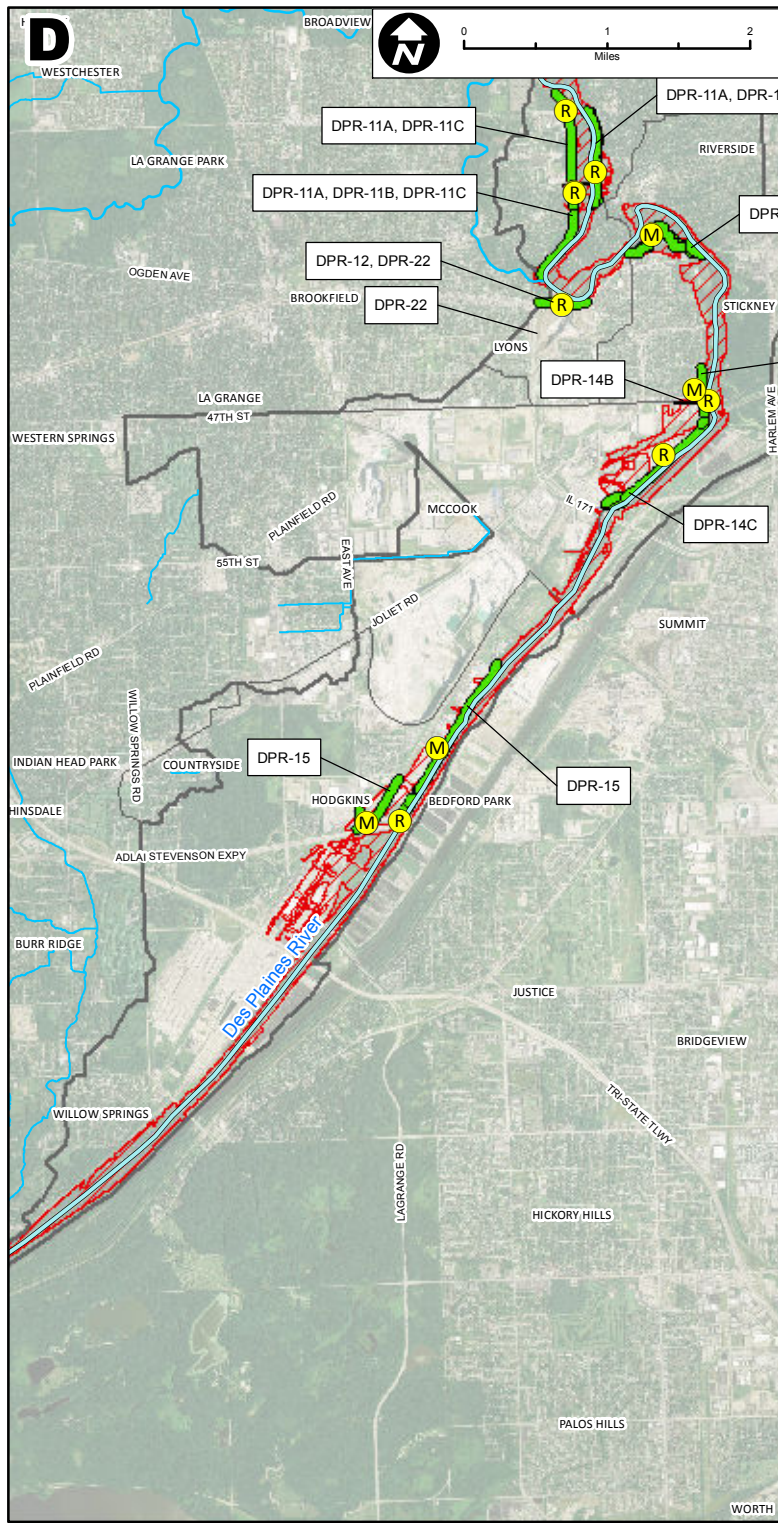
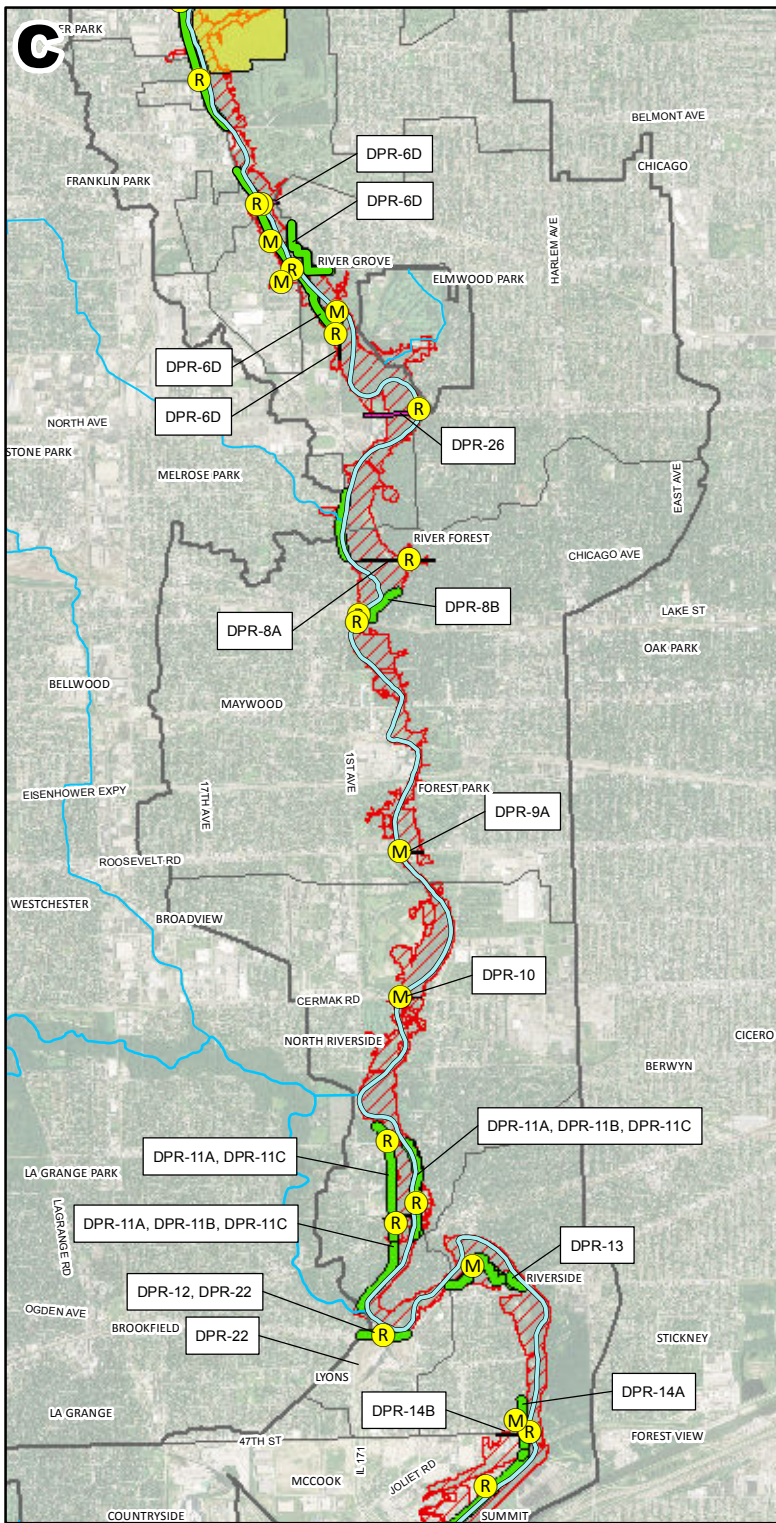
PROJ. NO. 08-0043  
 DATE: 04-26-2010  
 SHEET 1 OF 1  
 DRAWING NO.

**FIGURE  
 3.6.1A**



**CHRISTOPHER B. BURKE ENGINEERING, LTD.**  
 9575 W. Higgins Road, Suite 600 • Rosemont, Illinois 60018 • (847) 823-0500

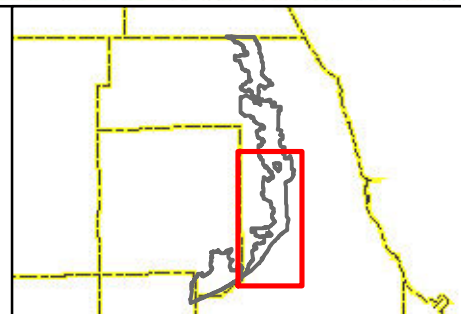
DSGN.	DRW	4-10	SCALE:	
DWN.			GIS USER	DRW
CHKD.			PLOT DATE	
FILE:				



- 100-Year Storm Event Flood Inundation Without Project
- Reservoir
- Channel Improvements
- Culvert/Bridge Modification
- Levee/Floodwall

- Approximate Creek Channel Location
- Municipal Boundary
- Watershed Boundary

- Problem Areas**
- Modeled
  - Regional



CLIENT:  
**METROPOLITAN WATER RECLAMATION DISTRICT OF GREATER CHICAGO**

TITLE:  
**LOWER DES PLAINES RIVER DETAILED WATERSHED PLAN  
 DES PLAINES RIVER WATERSHED SOUTH TRIBUTARY OVERVIEW**

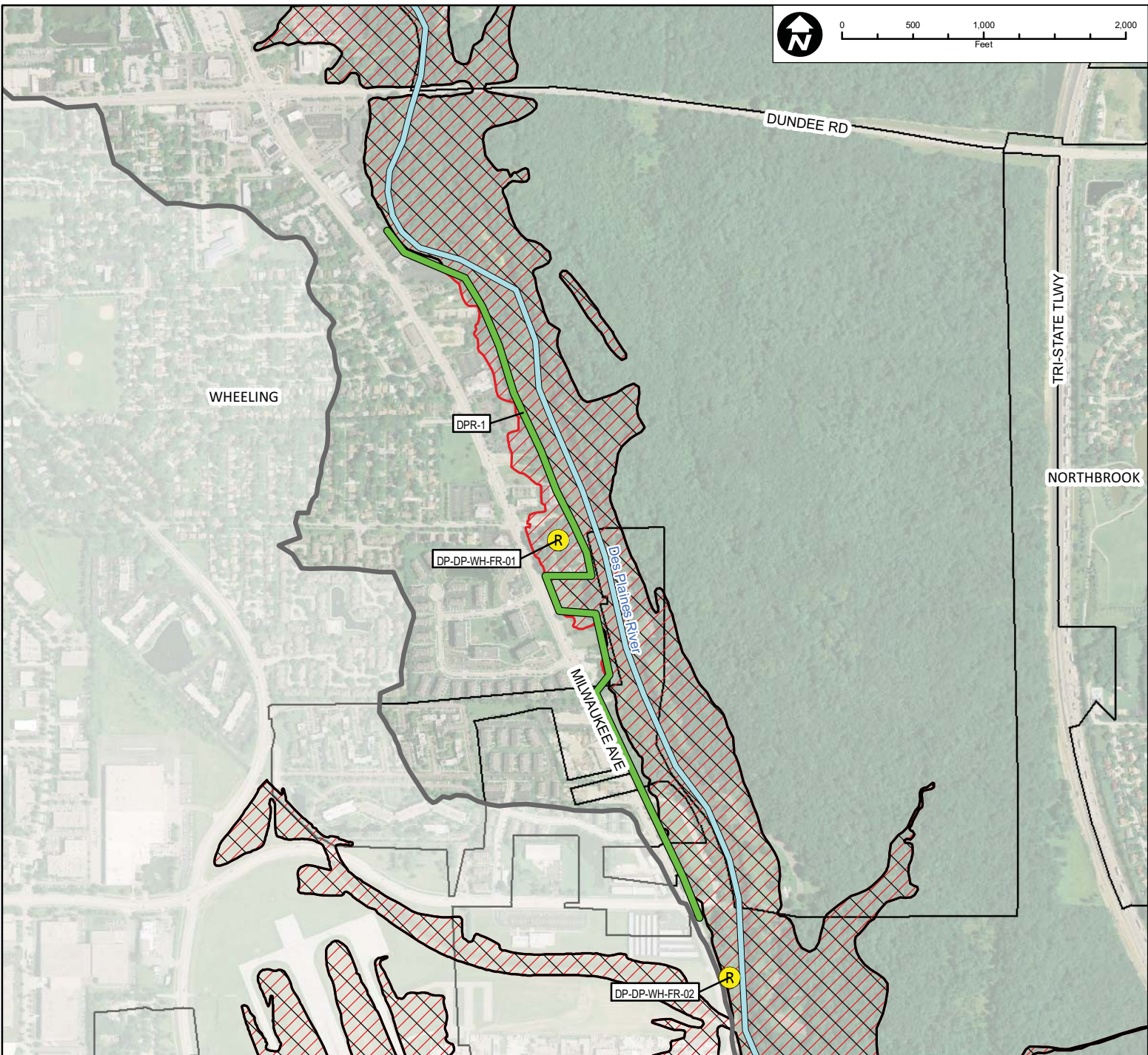
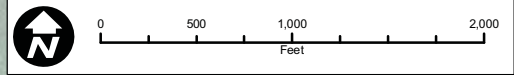
PROJ. NO. 08-0043  
 DATE: 04-26-2010  
 SHEET 1 OF 1  
 DRAWING NO.



**CHRISTOPHER B. BURKE ENGINEERING, LTD.**  
 9575 W. Higgins Road, Suite 600 · Rosemont, Illinois 60018 · (847) 823-0500

DSGN.	DRW	4-10	SCALE:	
DWN.			GIS USER	DRW
CHKD.			PLOT DATE	
FILE:				

**FIGURE 3.6.1B**



Subwatershed: Des Plaines River  
 Alternative: DPR-1  
 Alternatives Description: Construct 6,000 feet of floodwall along Des Plaines River east of Milwaukee Avenue.  
 Pump stations required to address internal drainage.

Concept Level Cost: \$17,826,218  
 Benefits: \$258,750  
 B/C Ratio: 0.01

**Legend**

- |                                                       |                             |                                    |                                             |
|-------------------------------------------------------|-----------------------------|------------------------------------|---------------------------------------------|
| 100-Year Storm Event Flood Inundation Without Project | Road Improvements           | Approximate Creek Channel Location | <b>Problem Areas</b><br>Modeled<br>Regional |
| 100-Year Storm Event Flood Inundation With Project    | Culvert/Bridge Modification | Municipal Boundary                 |                                             |
| Reservoir                                             | Channel Improvements        | Watershed Boundary                 |                                             |
| Levee/Floodwall                                       |                             |                                    |                                             |



CLIENT:  
**METROPOLITAN WATER RECLAMATION DISTRICT OF GREATER CHICAGO**

TITLE:  
**LOWER DES PLAINES RIVER DETAILED WATERSHED PLAN  
 DES PLAINES RIVER WATERSHED RECOMMENDED ALTERNATIVE DPR-1**

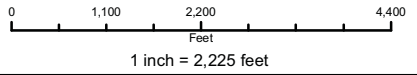
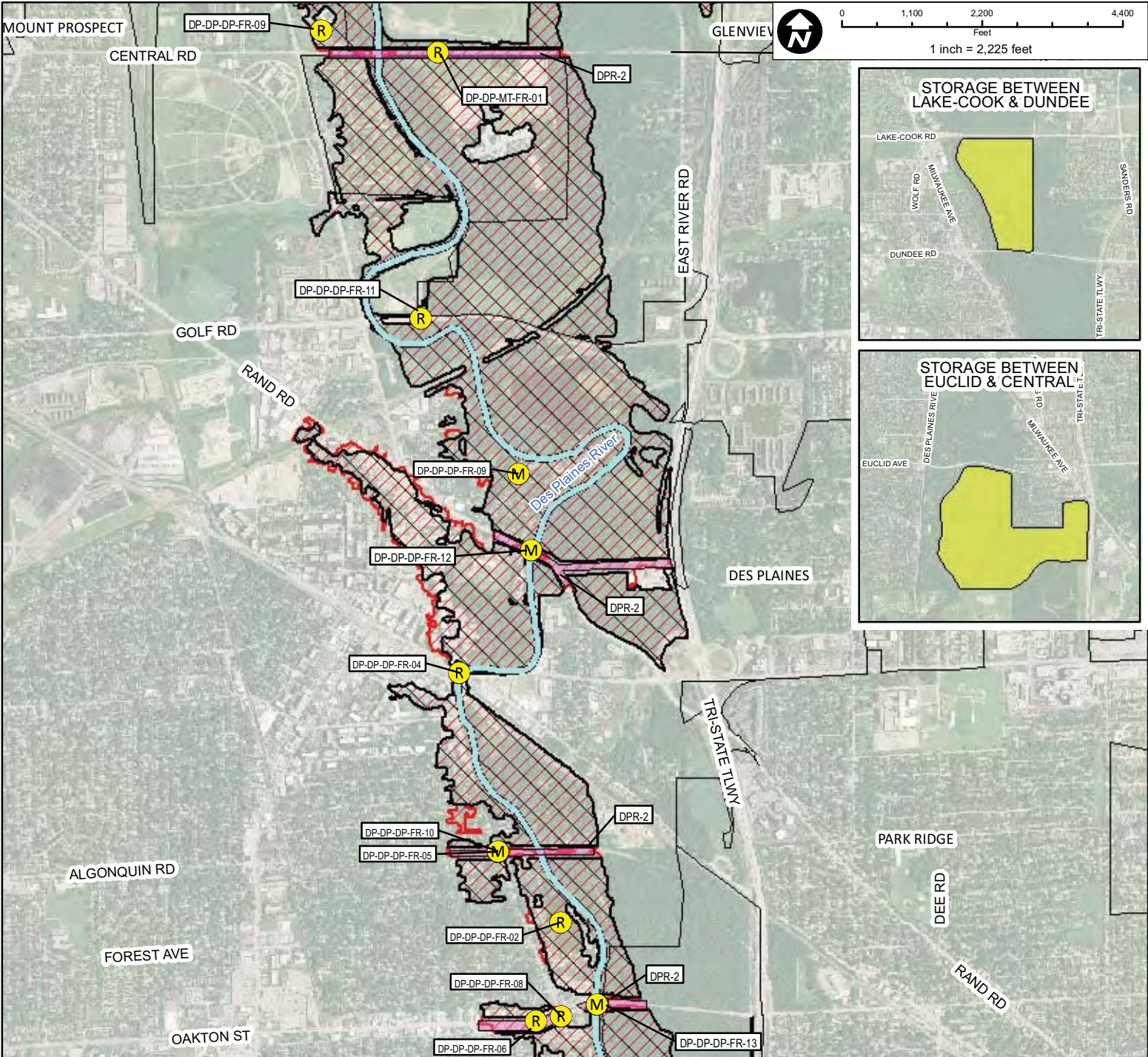
PROJ. NO. 08-0043  
 DATE: 03-23-2010  
 SHEET 1 OF 1  
 DRAWING NO.

**FIGURE 3.6.8**

**CHRISTOPHER B. BURKE ENGINEERING, LTD.**  
 9575 W. Higgins Road, Suite 600 · Rosemont, Illinois 60018 · (847) 823-0500

DSGN.	DRW	4-10	SCALE	
DWN.			GIS USER	DRW
CHKD.			PLOT DATE	
FILE:				

Map Document: (Z:\MWR\DC\08-0043 Phase B\GIS\Exhibits\Meeting Maps\DesPlaines\Des Plaines River Detailed Sheets.mxd) 1/12/2010 11:01:29 AM



Subwatershed: Des Plaines River  
 Alternative: DPR-2A  
 Alternatives Description: Raise approximately 3,200 feet of Central Avenue, approximately 3,500 feet of Rand Road, approximately 1,550 feet of Algonquin Road, and approximately 1,750 feet of Oakton Street to 0.5 feet above 100 year flood.  
 Include USACE concept reservoirs between Lake-Cook and Dundee Roads and between Euclid and Central Roads.

Concept Level Cost: \$200,000,000 to \$400,000,000  
 Benefits: \$11,936,692  
 B/C Ratio: 0.03 to 0.06

Legend	
	100-Year Storm Event Flood Inundation Without Project
	100-Year Storm Event Flood Inundation With Project
	Reservoir
	Road Improvements
	Culvert/Bridge Modification
	Channel Improvements
	Levee/Floodwall
	Approximate Creek Channel Location
	Municipal Boundary
	Watershed Boundary
	Problem Areas Modeled
	Problem Areas Regional



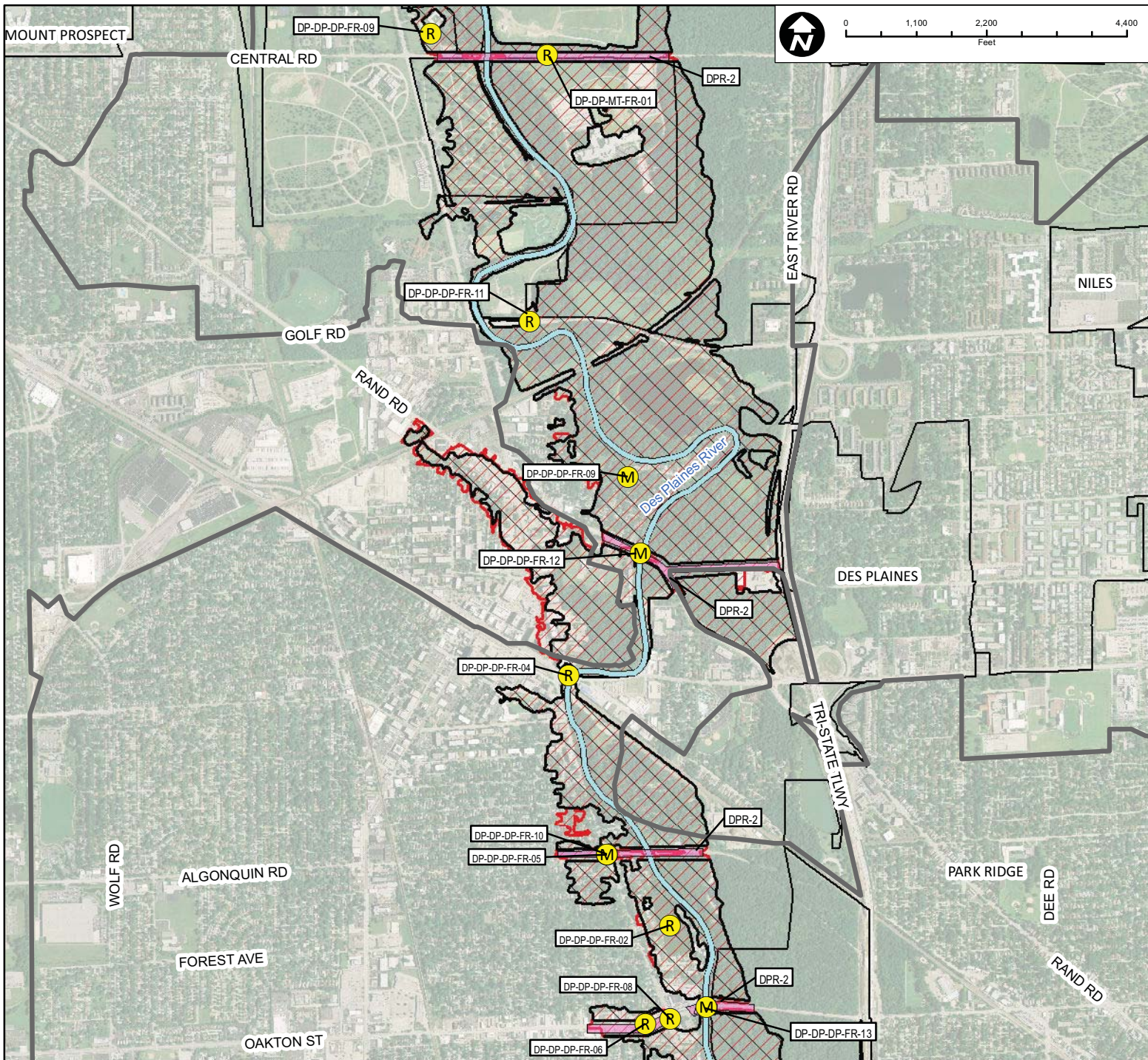
CLIENT: <b>METROPOLITAN WATER RECLAMATION DISTRICT OF GREATER CHICAGO</b>	TITLE: <b>LOWER DES PLAINES RIVER DETAILED WATERSHED PLAN DES PLAINES RIVER WATERSHED PROPOSED ALTERNATIVE DPR-2A</b>	PROJ. NO. 08-0043 DATE: 05-21-2010 SHEET 1 OF 1 DRAWING NO.
------------------------------------------------------------------------------	------------------------------------------------------------------------------------------------------------------------------	----------------------------------------------------------------------

**CHRISTOPHER B. BURKE ENGINEERING, LTD.**  
 9575 W. Higgins Road, Suite 600 · Rosemont, Illinois 60018 · (847) 823-0500

DSGN.	DRW	4-10	SCALE	1" = 2,000'
DWN.			GIS USER	DRW
CHKD.			PLOT DATE	
FILE:				

**FIGURE 3.6.9**

Map Document: (Z:\MWR\RDCC\08-0043 Phase 6\GIS\Exhibits\Meeting Maps\Des Plaines\Des Plaines River Detailed Sheets.mxd) 10/27/2010 - 2:02:16 PM

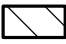
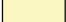






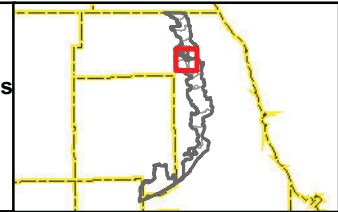
Subwatershed: Des Plaines River  
 Alternative: DPR-2B

Alternatives Description: Raise approximately 3,200 feet of Central Avenue and enlarge waterway opening, raise approximately 3,500 feet of Rand Road, approximately 1,550 feet of Algonquin Road, and approximately 1,750 feet of Oakton Street to 0.5 feet above 100-year flood inundation.

Concept Level Cost: \$18,967,319  
 Benefits: \$7,884,379  
 B/C Ratio: 0.4

**Legend**

-  100-Year Storm Event Flood Inundation Without Project
-  100-Year Storm Event Flood Inundation With Project
-  Reservoir
-  Road Improvements
-  Culvert/Bridge Modification
-  Channel Improvements
-  Levee/Floodwall
-  Approximate Creek Channel Location
-  Municipal Boundary
-  Watershed Boundary
- Problem Areas**
-  Modeled
-  Regional



CLIENT:  
**METROPOLITAN WATER RECLAMATION DISTRICT OF GREATER CHICAGO**

TITLE:  
**LOWER DES PLAINES RIVER DETAILED WATERSHED PLAN  
 DES PLAINES RIVER WATERSHED RECOMMENDED ALTERNATIVE DPR-2B**

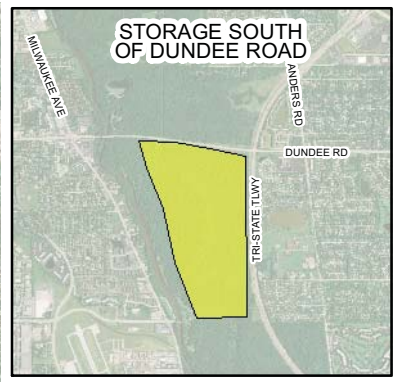
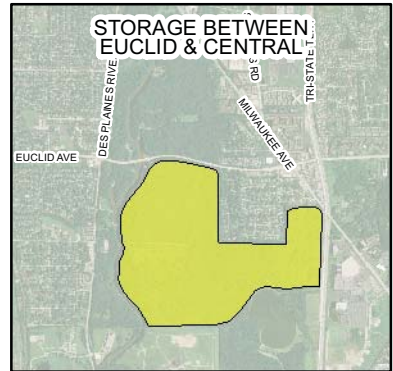
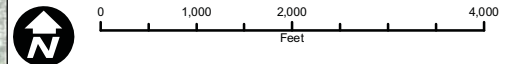
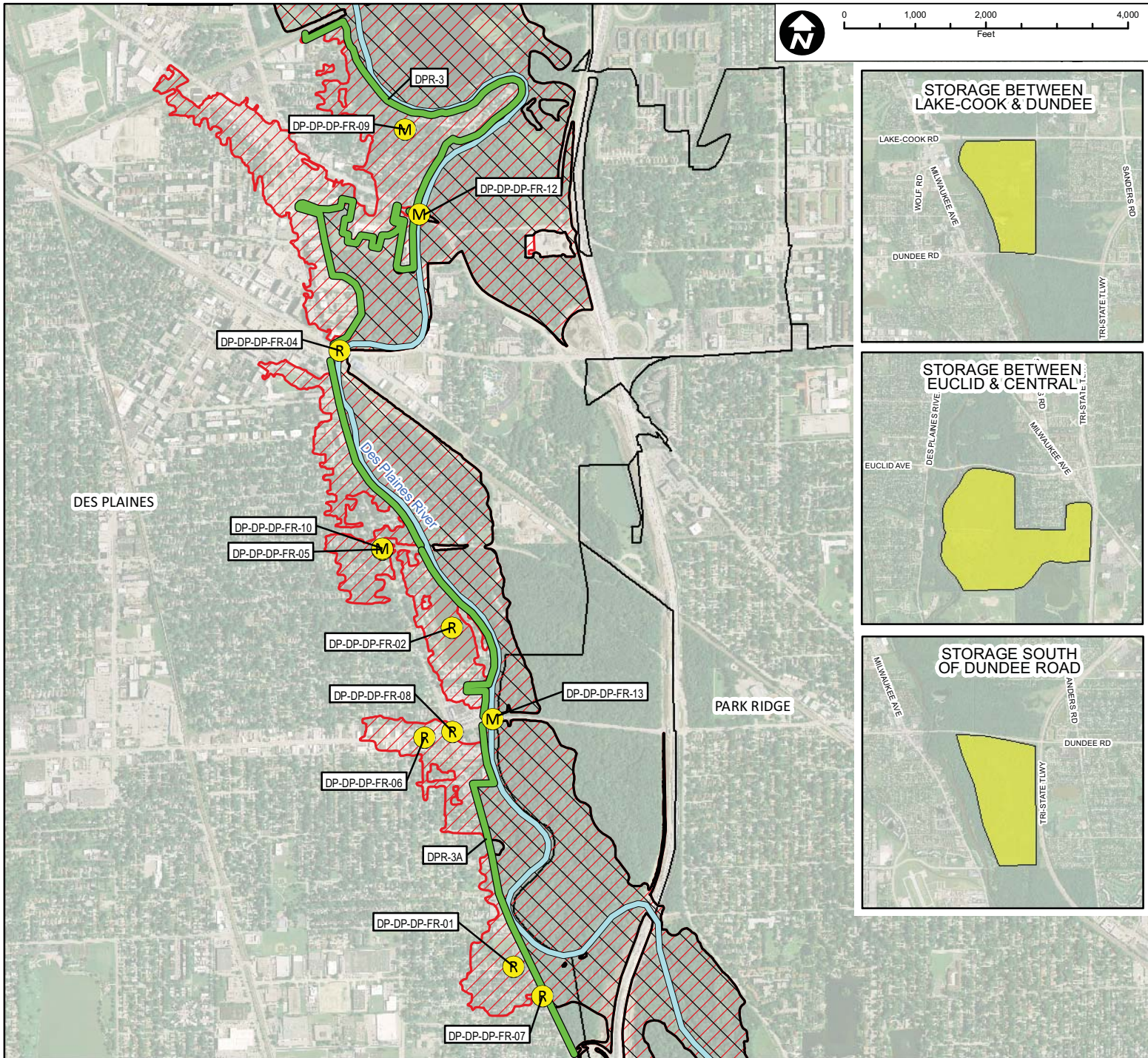
PROJ. NO. 08-0043  
 DATE: 05-21-2010  
 SHEET 1 OF 1  
 DRAWING NO.

 **CHRISTOPHER B. BURKE ENGINEERING, LTD.**  
 9575 W. Higgins Road, Suite 600 • Rosemont, Illinois 60018 • (847) 823-0500

DSGN.	DRW	4-10	SCALE	
DWN.			GIS USER	DRW
CHKD.			PLOT DATE	
FILE:				

**FIGURE 3.6.10**

Map Document: (Z:\MWR\DRCC\08-0043 Phase B\GIS\Exhibits\Meeting Maps\DesPlaines\Des Plaines River Detailed Sheets.mxd) 1/22/2010 11:02:45 AM



Subwatershed: Des Plaines River

Alternative: DPR-3A

Alternatives Description: City of Des Plaines Regional Floodwall.

Construct 26,500 feet of floodwall along Des Plaines River.

Include USACE concept reservoirs between Lake-Cook and Dundee Roads, south of Dundee Road, and between Euclid and Central Roads.

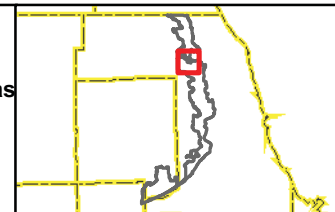
Concept Level Cost: \$523,018,856

Benefits: \$52,565,869

B/C Ratio: 0.1

**Legend**

- 100-Year Storm Event Flood Inundation Without Project
- 100-Year Storm Event Flood Inundation With Project
- Reservoir
- Road Improvements
- Culvert/Bridge Modification
- Channel Improvements
- Levee/Floodwall
- Approximate Creek Channel Location
- Municipal Boundary
- Watershed Boundary
- Problem Areas**
- Modeled
- Regional



CLIENT:  
**METROPOLITAN WATER RECLAMATION DISTRICT OF GREATER CHICAGO**

TITLE:  
**LOWER DES PLAINES RIVER DETAILED WATERSHED PLAN  
 DES PLAINES RIVER WATERSHED RECOMMENDED ALTERNATIVE DPR-3A**

PROJ. NO. 08-0043  
 DATE: 05-21-2010  
 SHEET 1 OF 1  
 DRAWING NO.

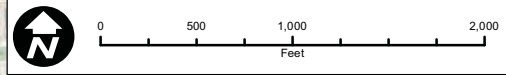
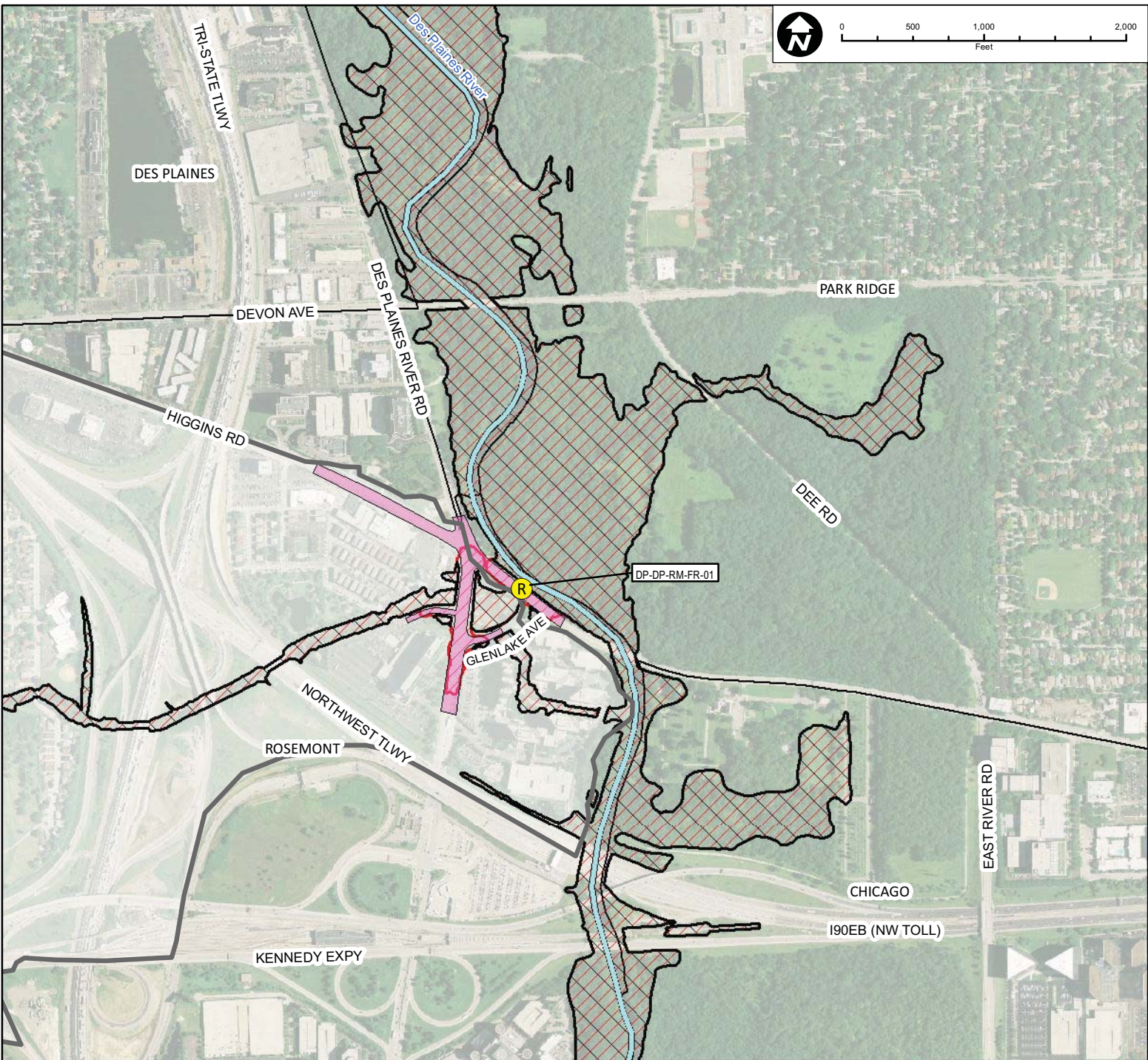


**CHRISTOPHER B. BURKE ENGINEERING, LTD.**  
 9575 W. Higgins Road, Suite 600 · Rosemont, Illinois 60018 · (847) 823-0500

DSGN.	DRW	4-10	SCALE	
DWN.			GIS USER	DRW
CHKD.			PLOT DATE	
FILE:				

**FIGURE 3.6.11**

Map Document: (Z:\MWRP\DC\08-0043 Phase B\GIS\Exhibits\Meeting Maps\DesPlaines\Des Plaines River Detailed Sheets.mxd) 1/12/2010 11:05:30 AM



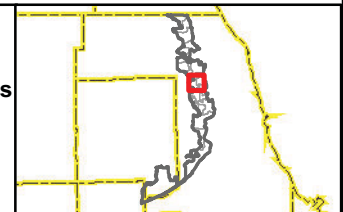
Subwatershed: Des Plaines River  
 Alternative: DPR-4

Alternatives Description: Raise approximately 2,500 feet of Higgins Road approximately 1,050 feet of River Road, and approximately 300 feet of Glenlake Avenue to 0.5 feet above the 100-year flood inundation.

Concept Level Cost: \$9,305,254  
 Benefits: \$1,558,254  
 B/C Ratio: 0.2

**Legend**

- |  |                                                       |  |                             |  |                                    |                      |          |
|--|-------------------------------------------------------|--|-----------------------------|--|------------------------------------|----------------------|----------|
|  | 100-Year Storm Event Flood Inundation Without Project |  | Road Improvements           |  | Approximate Creek Channel Location | <b>Problem Areas</b> |          |
|  | 100-Year Storm Event Flood Inundation With Project    |  | Culvert/Bridge Modification |  | Municipal Boundary                 |                      |          |
|  | Reservoir                                             |  | Channel Improvements        |  | Watershed Boundary                 |                      | Regional |
|  | Levee/Floodwall                                       |  |                             |  |                                    |                      |          |



CLIENT:  
**METROPOLITAN WATER RECLAMATION DISTRICT OF GREATER CHICAGO**

TITLE:  
**LOWER DES PLAINES RIVER DETAILED WATERSHED PLAN  
 DES PLAINES RIVER WATERSHED RECOMMENDED ALTERNATIVE DPR-4**

PROJ. NO. 08-0043  
 DATE: 05-21-2010  
 SHEET 1 OF 1  
 DRAWING NO.

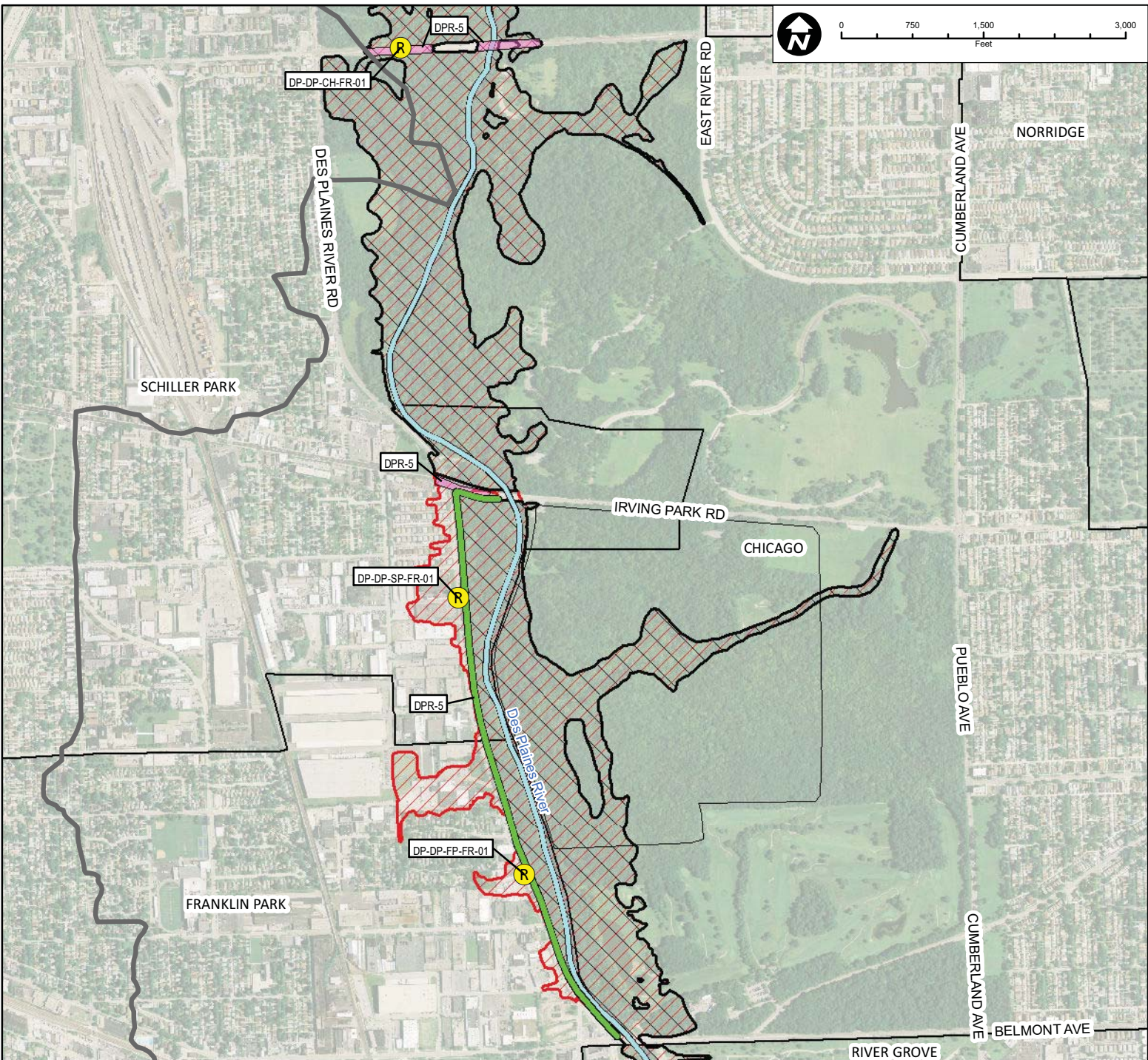


**CHRISTOPHER B. BURKE ENGINEERING, LTD.**  
 9575 W. Higgins Road, Suite 600 • Rosemont, Illinois 60018 • (847) 823-0500

DSGN.	DRW	4-10	SCALE	
DWN.			GIS USER	DRW
CHKD.			PLOT DATE	
FILE:				

**FIGURE  
 3.6.12**

Map Document: (Z:\MWR\DRCC\08-0043 Phase B\GIS\Exhibits\Meeting Maps\DesPlainesRiver\DesPlainesRiver Detailed Sheets.mxd) 1/22/2010 11:37:20 AM



Subwatershed: Des Plaines River  
 Alternative: DPR-5  
 Alternatives Description: Construct 6,600 feet of floodwall along East side of River Road.  
 Raise approximately 520 feet of Irving Park Road  
 and 1,950 feet of Lawrence Ave 0.5 feet above 100-year flood inundation.

Concept Level Cost: \$28,619,651  
 Benefits: \$9,936,443  
 B/C Ratio: 0.3

**Legend**

- 100-Year Storm Event Flood Inundation Without Project
- 100-Year Storm Event Flood Inundation With Project
- Reservoir
- Road Improvements
- Culvert/Bridge Modification
- Channel Improvements
- Levee/Floodwall
- Approximate Creek Channel Location
- Municipal Boundary
- Watershed Boundary
- Problem Areas**
- Modeled
- Regional



CLIENT:  
**METROPOLITAN WATER RECLAMATION DISTRICT OF GREATER CHICAGO**

TITLE:  
**LOWER DES PLAINES RIVER DETAILED WATERSHED PLAN  
 DES PLAINES RIVER WATERSHED RECOMMENDED ALTERNATIVE DPR-5**

PROJ. NO. 08-0043  
 DATE: 05-21-2010  
 SHEET 1 OF 1  
 DRAWING NO.

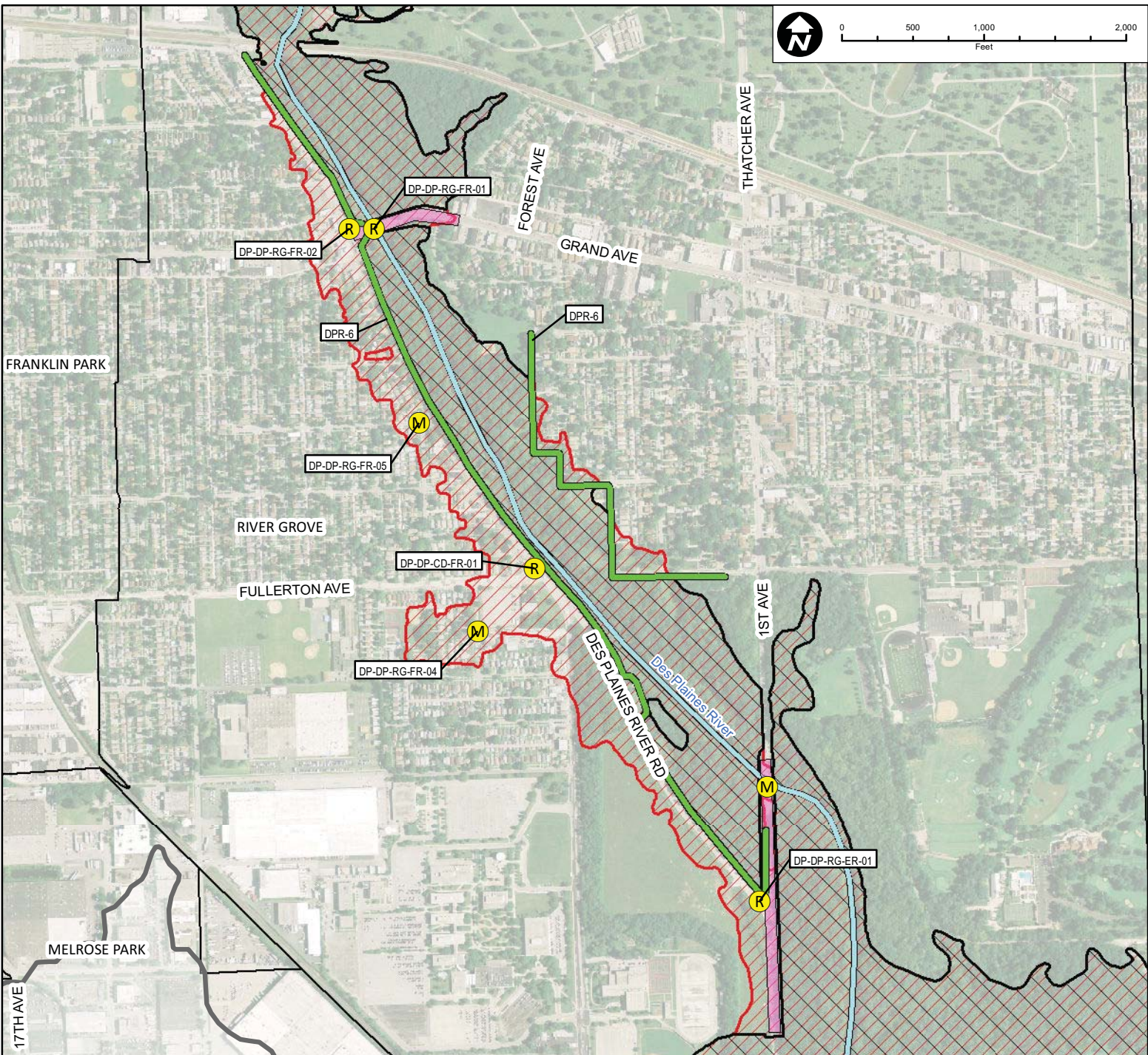
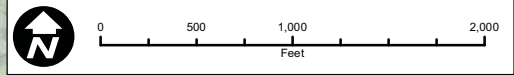
**CHRISTOPHER B. BURKE ENGINEERING, LTD.**  
 9575 W. Higgins Road, Suite 600 • Rosemont, Illinois 60018 • (847) 823-0500

DSGN.	DRW	4-10	SCALE	
DWN.			GIS USER	DRW
CHKD.			PLOT DATE	
FILE:				

**FIGURE 3.6.13**

Map Document: (Z:\MWR\RDCC\08-0043 Phase B\GIS\Exhibits\Meeting Maps\DesPlaines\Des Plaines River Detailed Sheets.mxd) 1/22/2010 11:06:33 AM

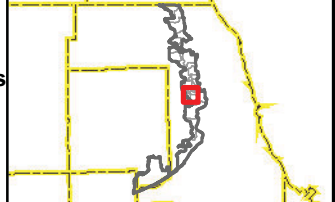




Subwatershed: Des Plaines River  
 Alternative: DPR-6D  
 Alternatives Description: Construct approximately 7,500 ft floodwall west of Des Plaines River and approximately 3,000 ft floodwall east of Des Plaines River. Pump stations required to address internal drainage. Enlarge waterway opening and raise approximately 1400 feet of Grand and raise approximately 1850 feet of 1st Avenue to 0.5 feet above the 100-year flood inundation.  
 Concept Level Cost: \$45,891,893  
 Benefits: \$19,352,980  
 B/C Ratio: 0.4

**Legend**

100-Year Storm Event Flood Inundation Without Project	Road Improvements	Approximate Creek Channel Location	<b>Problem Areas</b> Modeled Regional
100-Year Storm Event Flood Inundation With Project	Culvert/Bridge Modification	Municipal Boundary	
Reservoir	Channel Improvements	Watershed Boundary	
	Levee/Floodwall		

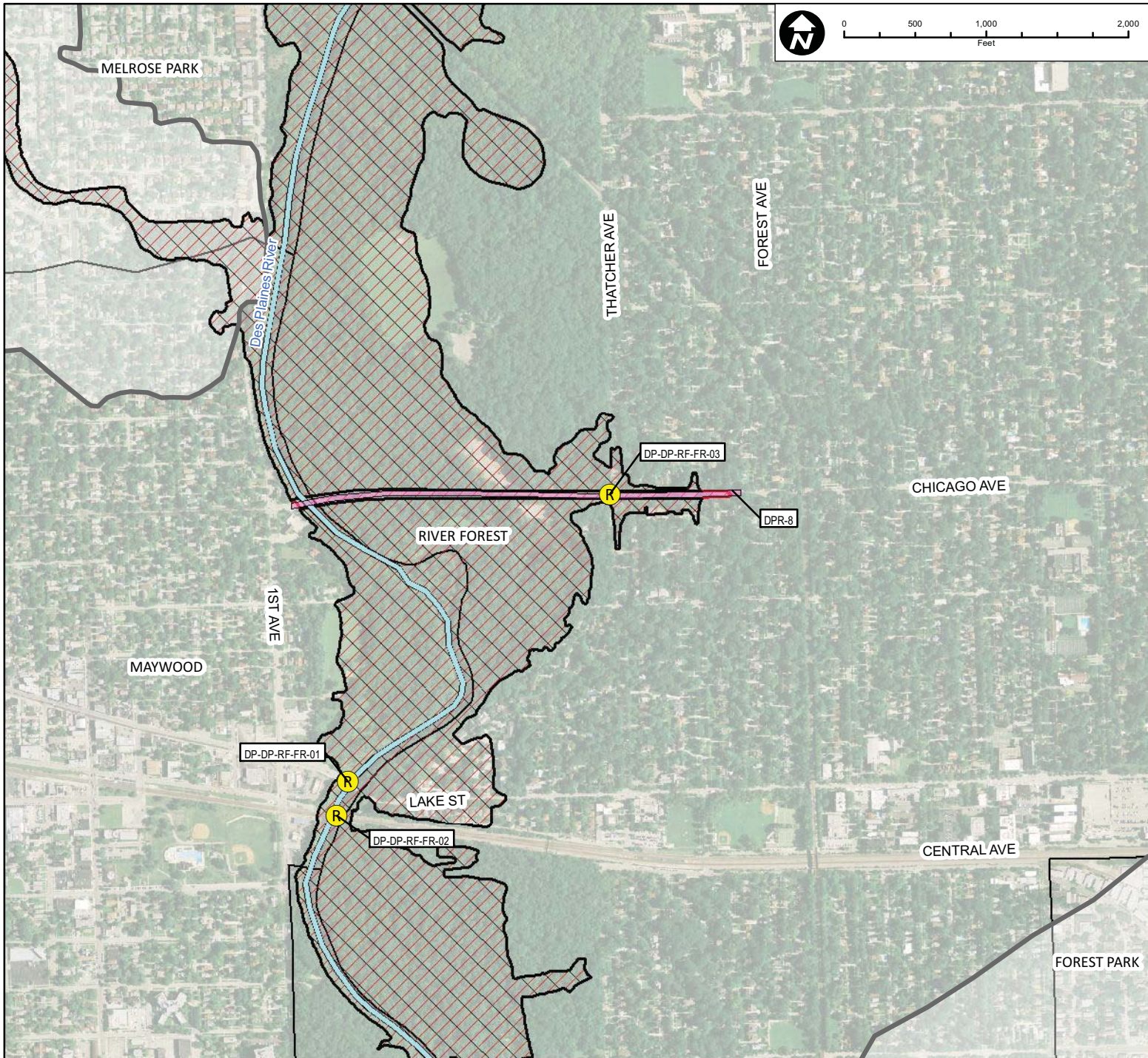


CLIENT: <b>METROPOLITAN WATER RECLAMATION DISTRICT OF GREATER CHICAGO</b>	TITLE: <b>LOWER DES PLAINES RIVER DETAILED WATERSHED PLAN DES PLAINES RIVER WATERSHED RECOMMENDED ALTERNATIVE DPR-6D</b>	PROJ. NO. 08-0043 DATE: 05-21-2010 SHEET 1 OF 1 DRAWING NO.
------------------------------------------------------------------------------	---------------------------------------------------------------------------------------------------------------------------------	----------------------------------------------------------------------

<b>CHRISTOPHER B. BURKE ENGINEERING, LTD.</b> 9575 W. Higgins Road, Suite 600 • Rosemont, Illinois 60018 • (847) 823-0500	DSGN.	DRW	4-10	SCALE	
	DWN.			GIS USER	DRW
	CHKD.			PLOT DATE	
	FILE:				

**FIGURE 3.6.14**




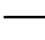


Map Document: (Z:\MWR\RGCC\08-0043 Phase B\GIS\Exhibits\Meeting Maps\DesPlaines\Des Plaines River Detailed Sheets.mxd) 1/22/2010 11:09:47 AM

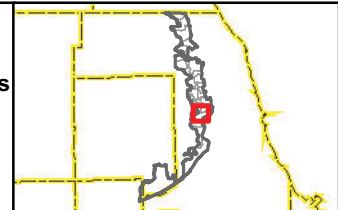


Subwatershed: Des Plaines River  
 Alternative: DPR-8A  
 Alternatives Description: Raise approximately 3,300 feet of Chicago Avenue to 0.5 feet above the 100-year flood inundation.

Concept Level Cost: \$10,371,259  
 Benefits: \$407,298  
 B/C Ratio: 0.04

**Legend**

-  100-Year Storm Event Flood Inundation Without Project
-  100-Year Storm Event Flood Inundation With Project
-  Reservoir
-  Road Improvements
-  Culvert/Bridge Modification
-  Channel Improvements
-  Levee/Floodwall
-  Approximate Creek Channel Location
-  Municipal Boundary
-  Watershed Boundary
- Problem Areas**
-  Modeled
-  Regional



CLIENT:  
**METROPOLITAN WATER RECLAMATION DISTRICT OF GREATER CHICAGO**

TITLE:  
**LOWER DES PLAINES RIVER DETAILED WATERSHED PLAN  
 DES PLAINES RIVER WATERSHED RECOMMENDED ALTERNATIVE DPR-8A**

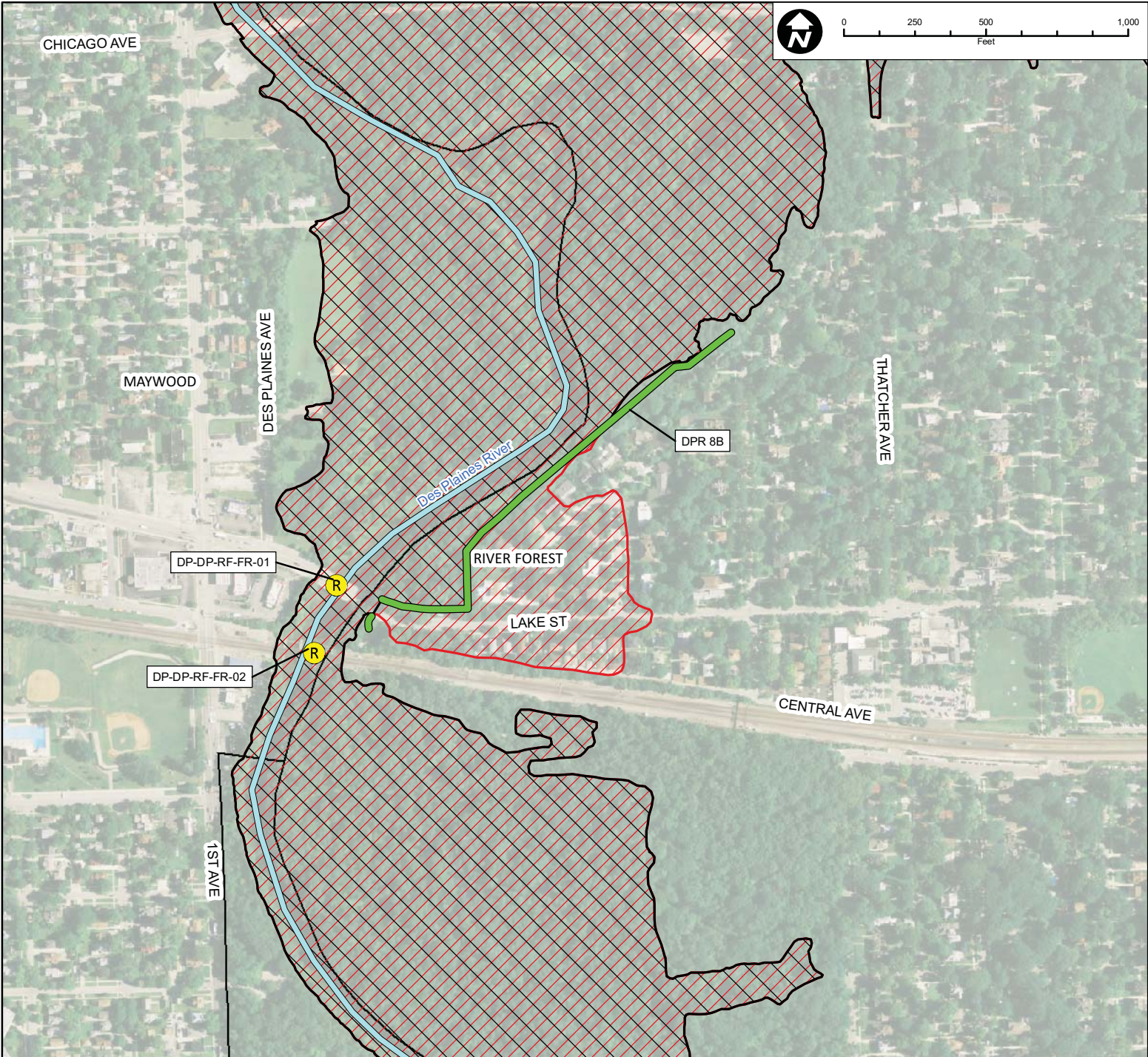
PROJ. NO. 08-0043  
 DATE: 05-21-2010  
 SHEET 1 OF 1  
 DRAWING NO.

 **CHRISTOPHER B. BURKE ENGINEERING, LTD.**  
 9575 W. Higgins Road, Suite 600 · Rosemont, Illinois 60018 · (847) 823-0500

DSGN.	DRW	4-10	SCALE	
DWN.			GIS USER	DRW
CHKD.			PLOT DATE	
FILE:				

**FIGURE  
 3.6.15**

Map Document: (Z:\MWR\RDCC\08-0043 Phase B\GIS\Exhibits\Meeting Maps\DesPlaines\Des Plaines River Detailed Sheets.mxd) 1/22/2010 11:11:52 AM

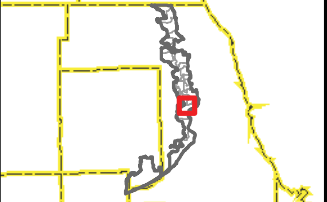


Subwatershed: Des Plaines River  
 Alternative: DPR-8B  
 Alternatives Description: Construct 2,150 feet of floodwall along Des Plaines River.  
 Pump station required to address internal drainage.  
 Closure structure required at Lake Street.

Concept Level Cost: \$6,097,943  
 Benefits: \$985,073  
 B/C Ratio: 0.2

**Legend**

- |                                                       |                             |                                    |                                             |
|-------------------------------------------------------|-----------------------------|------------------------------------|---------------------------------------------|
| 100-Year Storm Event Flood Inundation Without Project | Road Improvements           | Approximate Creek Channel Location | <b>Problem Areas</b><br>Modeled<br>Regional |
| 100-Year Storm Event Flood Inundation With Project    | Culvert/Bridge Modification | Municipal Boundary                 |                                             |
| Reservoir                                             | Channel Improvements        | Watershed Boundary                 |                                             |
| Levee/Floodwall                                       |                             |                                    |                                             |



CLIENT:  
**METROPOLITAN WATER RECLAMATION DISTRICT OF GREATER CHICAGO**

TITLE:  
**LOWER DES PLAINES RIVER DETAILED WATERSHED PLAN  
 DES PLAINES RIVER WATERSHED RECOMMENDED ALTERNATIVE DPR-8B**

PROJ. NO. 08-0043  
 DATE: 05-21-2010  
 SHEET 1 OF 1  
 DRAWING NO.

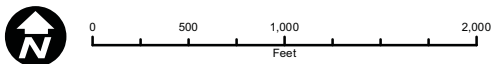
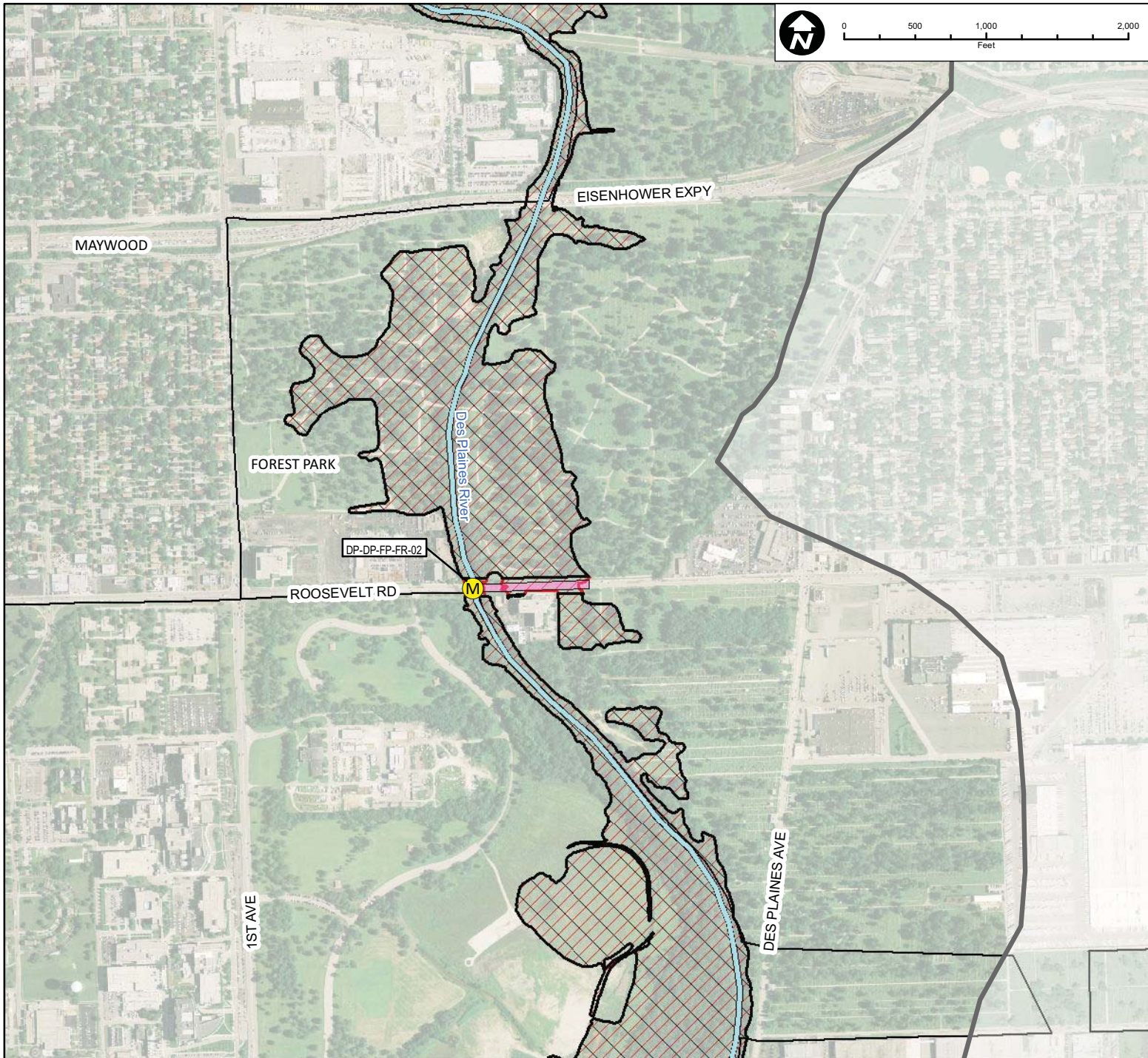


**CHRISTOPHER B. BURKE ENGINEERING, LTD.**  
 9575 W. Higgins Road, Suite 600 · Rosemont, Illinois 60018 · (847) 823-0500

DSGN.	DRW	4-10	SCALE	
DWN.			GIS USER	DRW
CHKD.			PLOT DATE	
FILE:				

**FIGURE  
 3.6.16**

Map Document: Z:\MWRP\DC\08-0043 Phase B\GIS\Exhibits\Meeting Maps\DesPlaines\Des Plaines River Detailed Sheets.mxd  
 1/22/2010 11:12:07 AM

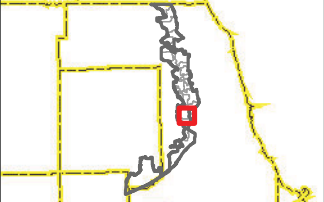


Subwatershed: Des Plaines River  
 Alternative: DPR-9A  
 Alternatives Description: Raise approximately 715 feet of Roosevelt Road to 0.5 feet above the 100-year flood inundation and enlarge waterway opening.

Concept Level Cost: \$4,596,656  
 Benefits: \$821,943  
 B/C Ratio: 0.2

**Legend**

- 100-Year Storm Event Flood Inundation Without Project
- Culvert/Bridge Modification
- Approximate Creek Channel Location
- Problem Areas**
- 100-Year Storm Event Flood Inundation With Project
- Channel Improvements
- Municipal Boundary
- Modeled
- Reservoir
- Levee/Floodwall
- Watershed Boundary
- Regional



CLIENT:  
**METROPOLITAN WATER RECLAMATION DISTRICT OF GREATER CHICAGO**

TITLE:  
**LOWER DES PLAINES RIVER DETAILED WATERSHED PLAN  
 DES PLAINES RIVER WATERSHED RECOMMENDED ALTERNATIVE DPR-9A**

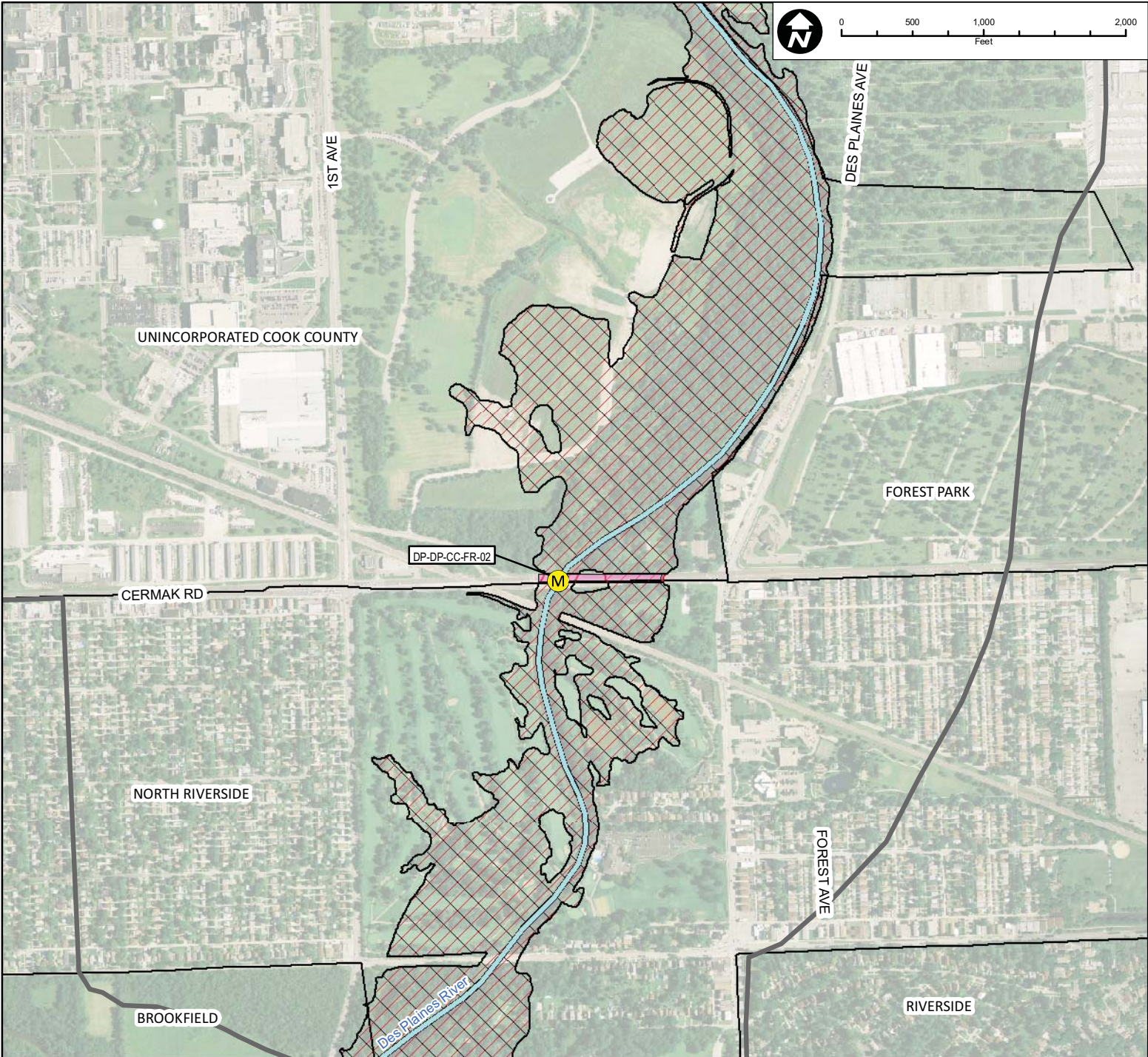
PROJ. NO. 08-0043  
 DATE: 05-21-2010  
 SHEET 1 OF 1  
 DRAWING NO.

**CHRISTOPHER B. BURKE ENGINEERING, LTD.**  
 9575 W. Higgins Road, Suite 600 · Rosemont, Illinois 60018 · (847) 823-0500

DSGN.	DRW	4-10	SCALE	
DWN.			GIS USER	DRW
CHKD.			PLOT DATE	
FILE:				

**FIGURE 3.6.17**




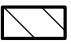




Map Document: (Z:\MWR\RDCC\08-0043 Phase B\GIS\Exhibits\Meeting Maps\DesPlaines\Des Plaines River Detailed Sheets.mxd) 1/22/2010 11:13:35 AM



Subwatershed: Des Plaines River  
 Alternative: DPR-10  
 Alternatives Description: Raise approximately 450 feet of Cermak Road to 0.5 feet above 100-year flood inundation.

Concept Level Cost: \$538,276  
 Benefits: \$126,538  
 B/C Ratio: 0.2

**Legend**

- |                                                                                     |                                                       |                                                                                     |                             |                                                                                     |                                    |                                                                                                                                                                                                                         |
|-------------------------------------------------------------------------------------|-------------------------------------------------------|-------------------------------------------------------------------------------------|-----------------------------|-------------------------------------------------------------------------------------|------------------------------------|-------------------------------------------------------------------------------------------------------------------------------------------------------------------------------------------------------------------------|
|   | 100-Year Storm Event Flood Inundation Without Project |  | Road Improvements           |  | Approximate Creek Channel Location | <b>Problem Areas</b><br> Modeled<br> Regional |
|   | 100-Year Storm Event Flood Inundation With Project    |  | Culvert/Bridge Modification |  | Municipal Boundary                 |                                                                                                                                                                                                                         |
|   | Reservoir                                             |  | Channel Improvements        |  | Watershed Boundary                 |                                                                                                                                                                                                                         |
|  | Levee/Floodwall                                       |                                                                                     |                             |                                                                                     |                                    |                                                                                                                                                                                                                         |



CLIENT:  
**METROPOLITAN WATER RECLAMATION DISTRICT OF GREATER CHICAGO**

TITLE:  
**LOWER DES PLAINES RIVER DETAILED WATERSHED PLAN  
 DES PLAINES RIVER WATERSHED RECOMMENDED ALTERNATIVE DPR-10**

PROJ. NO. 08-0043  
 DATE: 05-21-2010  
 SHEET 1 OF 1  
 DRAWING NO.



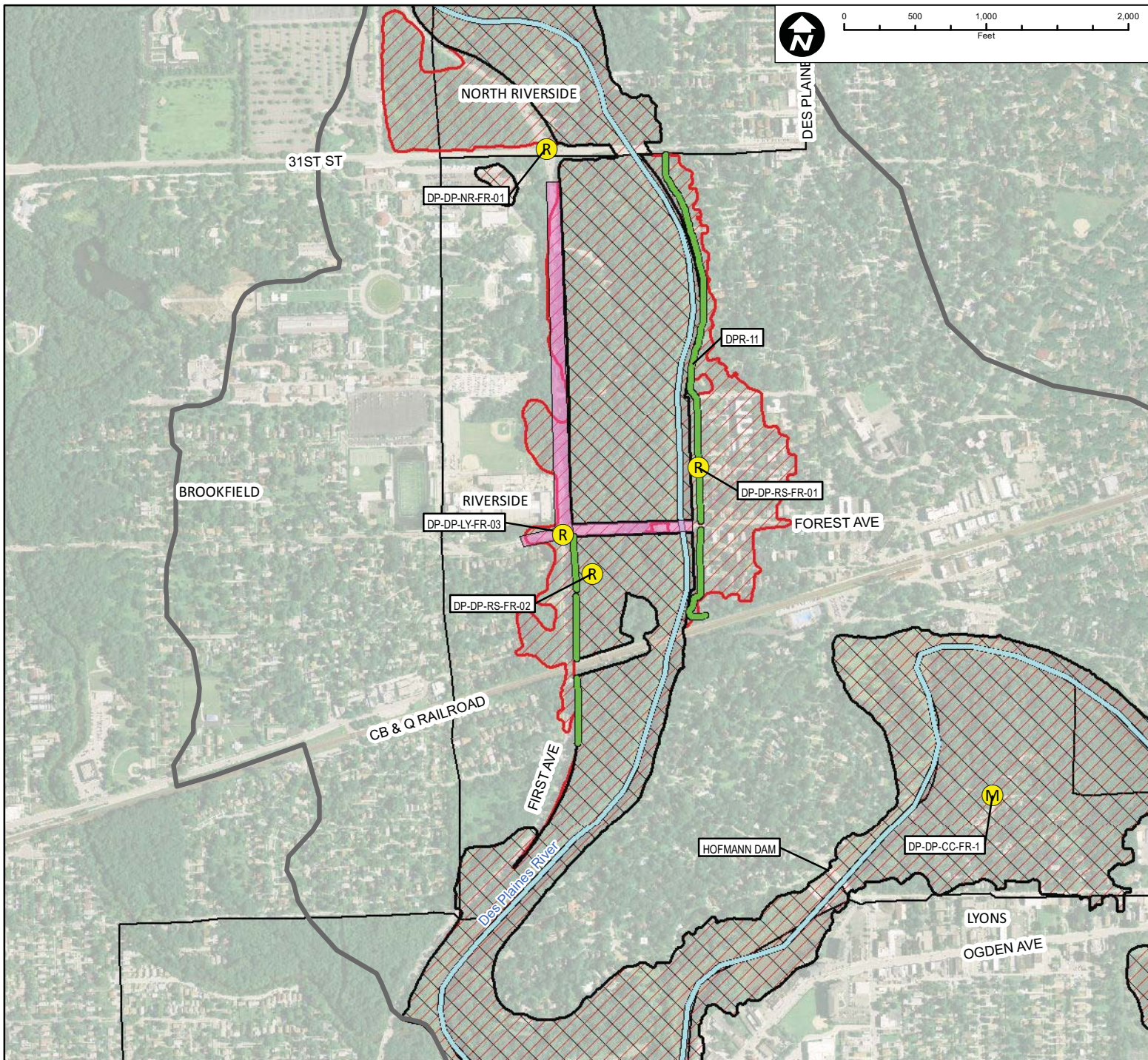
**CHRISTOPHER B. BURKE ENGINEERING, LTD.**  
 9575 W. Higgins Road, Suite 600 · Rosemont, Illinois 60018 · (847) 823-0500

DSGN.	DRW	4-10	SCALE	
DWN.			GIS USER	DRW
CHKD.			PLOT DATE	
FILE:				

**FIGURE 3.6.18**

Map Document: (Z:\MWRP\DC08-0043 Phase B\GIS\Exhibits\Meeting Maps\DesPlaines\Des Plaines River Detailed Sheets.mxd) 1/22/2010 11:14:38 AM

Map Document: /Z:\MWR\DRCC\08-0043 Phase B\GIS\Exhibits\Meeting Maps\DesPlaines\Des Plaines River Detailed Sheets.mxd  
10/27/2010 3:36:41 PM



Subwatershed: Des Plaines River  
 Alternative: DPR-11A  
 Alternatives Description: Construct 1,300 feet of levee/floodwall along west side of Des Plaines River.  
 Construct 3,500 feet of levee/floodwall along east side of Des Plaines River.  
 Pump station required to address internal drainage.  
 Raise Forest Avenue, and First Avenue to 0.5 feet above 100-year flood inundation.  
 Concept Level Cost: \$29,244,335  
 Benefits: \$11,553,857  
 B/C Ratio: 0.4

**Legend**

- |  |                                                       |  |                             |  |                                    |                                             |
|--|-------------------------------------------------------|--|-----------------------------|--|------------------------------------|---------------------------------------------|
|  | 100-Year Storm Event Flood Inundation Without Project |  | Road Improvements           |  | Approximate Creek Channel Location | <b>Problem Areas</b><br>Modeled<br>Regional |
|  | 100-Year Storm Event Flood Inundation With Project    |  | Culvert/Bridge Modification |  | Municipal Boundary                 |                                             |
|  | Reservoir                                             |  | Channel Improvements        |  | Watershed Boundary                 |                                             |
|  | Levee/Floodwall                                       |  |                             |  |                                    |                                             |



CLIENT:  
**METROPOLITAN WATER RECLAMATION DISTRICT OF GREATER CHICAGO**

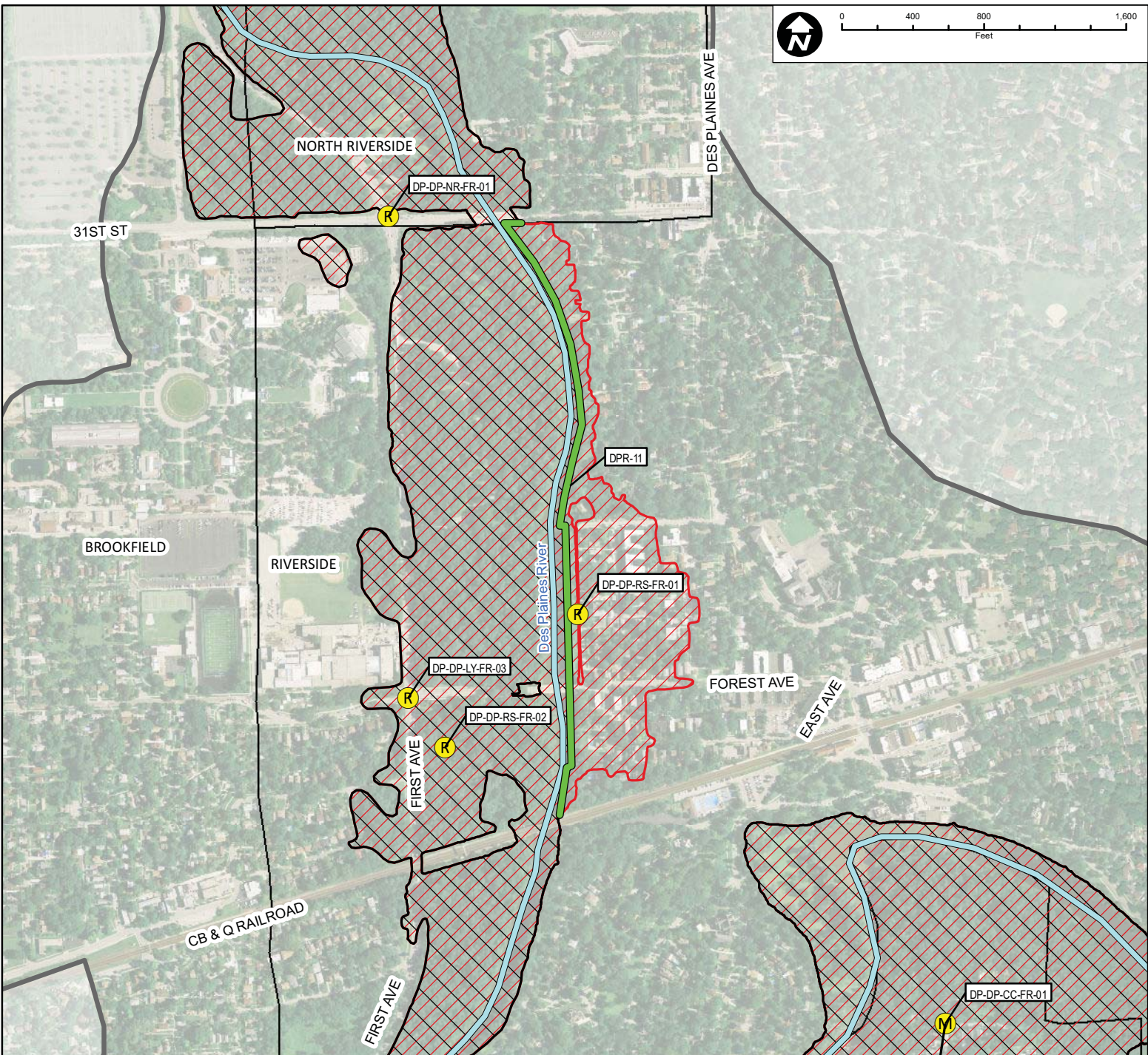
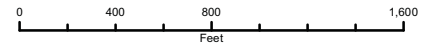
TITLE:  
**LOWER DES PLAINES RIVER DETAILED WATERSHED PLAN  
 DES PLAINES RIVER WATERSHED PROPOSED ALTERNATIVE DPR-11A**

PROJ. NO. 08-0043  
 DATE: 05-21-2010  
 SHEET 1 OF 1  
 DRAWING NO.

**CHRISTOPHER B. BURKE ENGINEERING, LTD.**  
 9575 W. Higgins Road, Suite 600 · Rosemont, Illinois 60018 · (847) 823-0500

DSGN.	DRW	4-10	SCALE	
DWN.			GIS USER	DRW
CHKD.			PLOT DATE	
FILE:				

**FIGURE 3.6.19**



Subwatershed: Des Plaines River  
 Alternative: DPR-11B  
 Alternatives Description: Groveland Avenue floodwall.  
 Construct 3,500 feet of floodwall along Des Plaines River.  
 Pump stations required to address internal drainage.

Concept Level Cost: \$15,930,181  
 Benefits: \$10,083,162  
 B/C Ratio: 0.6

**Legend**

- |  |                                                       |  |                             |  |                                    |  |                       |
|--|-------------------------------------------------------|--|-----------------------------|--|------------------------------------|--|-----------------------|
|  | 100-Year Storm Event Flood Inundation Without Project |  | Road Improvements           |  | Approximate Creek Channel Location |  | Problem Areas Modeled |
|  | 100-Year Storm Event Flood Inundation With Project    |  | Culvert/Bridge Modification |  | Municipal Boundary                 |  | Regional              |
|  | Reservoir                                             |  | Channel Improvements        |  | Watershed Boundary                 |  |                       |
|  | Levee/Floodwall                                       |  |                             |  |                                    |  |                       |



CLIENT:  
**METROPOLITAN WATER RECLAMATION DISTRICT OF GREATER CHICAGO**

TITLE:  
**LOWER DES PLAINES RIVER DETAILED WATERSHED PLAN  
 DES PLAINES RIVER WATERSHED PROPOSED ALTERNATIVE DPR-11B**

PROJ. NO. 08-0043  
 DATE: 05-21-2010  
 SHEET 1 OF 1  
 DRAWING NO.

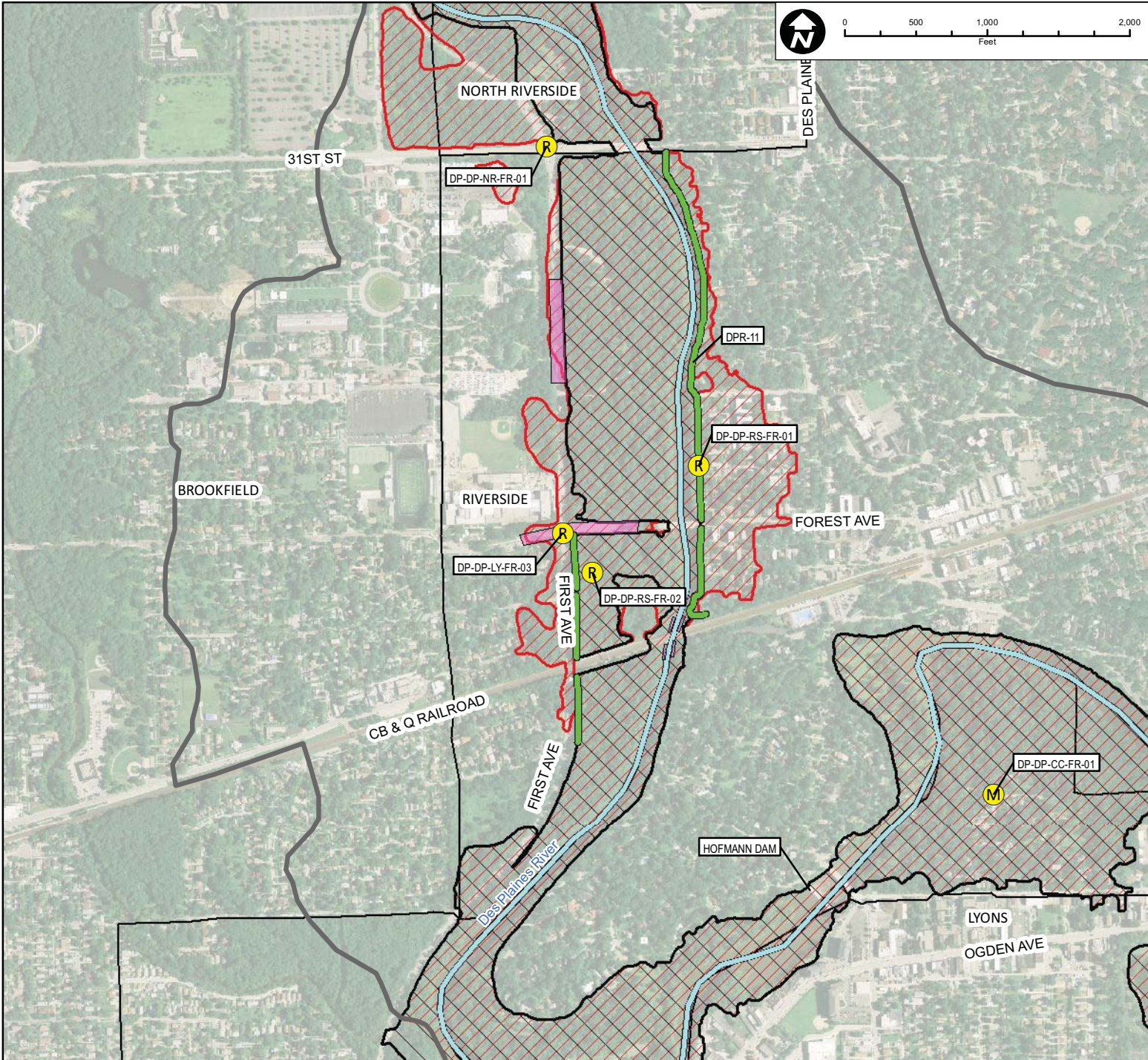
**CHRISTOPHER B. BURKE ENGINEERING, LTD.**  
 9575 W. Higgins Road, Suite 600 · Rosemont, Illinois 60018 · (847) 823-0500

DSGN.	DRW	4-10	SCALE	
DWN.			GIS USER	DRW
CHKD.			PLOT DATE	
FILE:				

**FIGURE 3.6.20**

Map Document: /Z:\MWR\DRCC\08-0043 Phase B\GIS\Exhibits\Meeting Maps\DesPlaines\Des Plaines River Detailed Sheets.mxd 10/27/2010 - 3:57:49 PM

Map Document: (Z:\MWR\RDCC\08-0043 Phase B\GIS\Exhibits\Meeting Maps\DesPlaines\Des Plaines River Detailed Sheets.mxd) 1/22/2010 11:17:18 AM



Subwatershed: Des Plaines River  
 Alternative: DPR-11C

Alternatives Description: Construct 1,300 feet of levee/floodwall along west side of Des Plaines River.  
 Construct 3,500 feet of levee/floodwall along east side of Des Plaines River. Pump stations required to address internal drainage.  
 Raise Forest Avenue, and First Avenue to 0.5 feet above 100-year flood inundation. Extend piers at railroad south of Forest Avenue

Concept Level Cost: \$28,267,020  
 Benefits: \$11,767,856  
 B/C Ratio: 0.4

**Legend**

- |  |                                                       |  |                             |  |                                    |                                             |
|--|-------------------------------------------------------|--|-----------------------------|--|------------------------------------|---------------------------------------------|
|  | 100-Year Storm Event Flood Inundation Without Project |  | Road Improvements           |  | Approximate Creek Channel Location | <b>Problem Areas</b><br>Modeled<br>Regional |
|  | 100-Year Storm Event Flood Inundation With Project    |  | Culvert/Bridge Modification |  | Municipal Boundary                 |                                             |
|  | Reservoir                                             |  | Channel Improvements        |  | Watershed Boundary                 |                                             |
|  | Levee/Floodwall                                       |  |                             |  |                                    |                                             |



CLIENT:  
**METROPOLITAN WATER RECLAMATION DISTRICT OF GREATER CHICAGO**

TITLE:  
**LOWER DES PLAINES RIVER DETAILED WATERSHED PLAN  
 DES PLAINES RIVER WATERSHED RECOMMENDED ALTERNATIVE DPR-11C**

PROJ. NO. 08-0043  
 DATE: 05-21-2010  
 SHEET 1 OF 1  
 DRAWING NO.

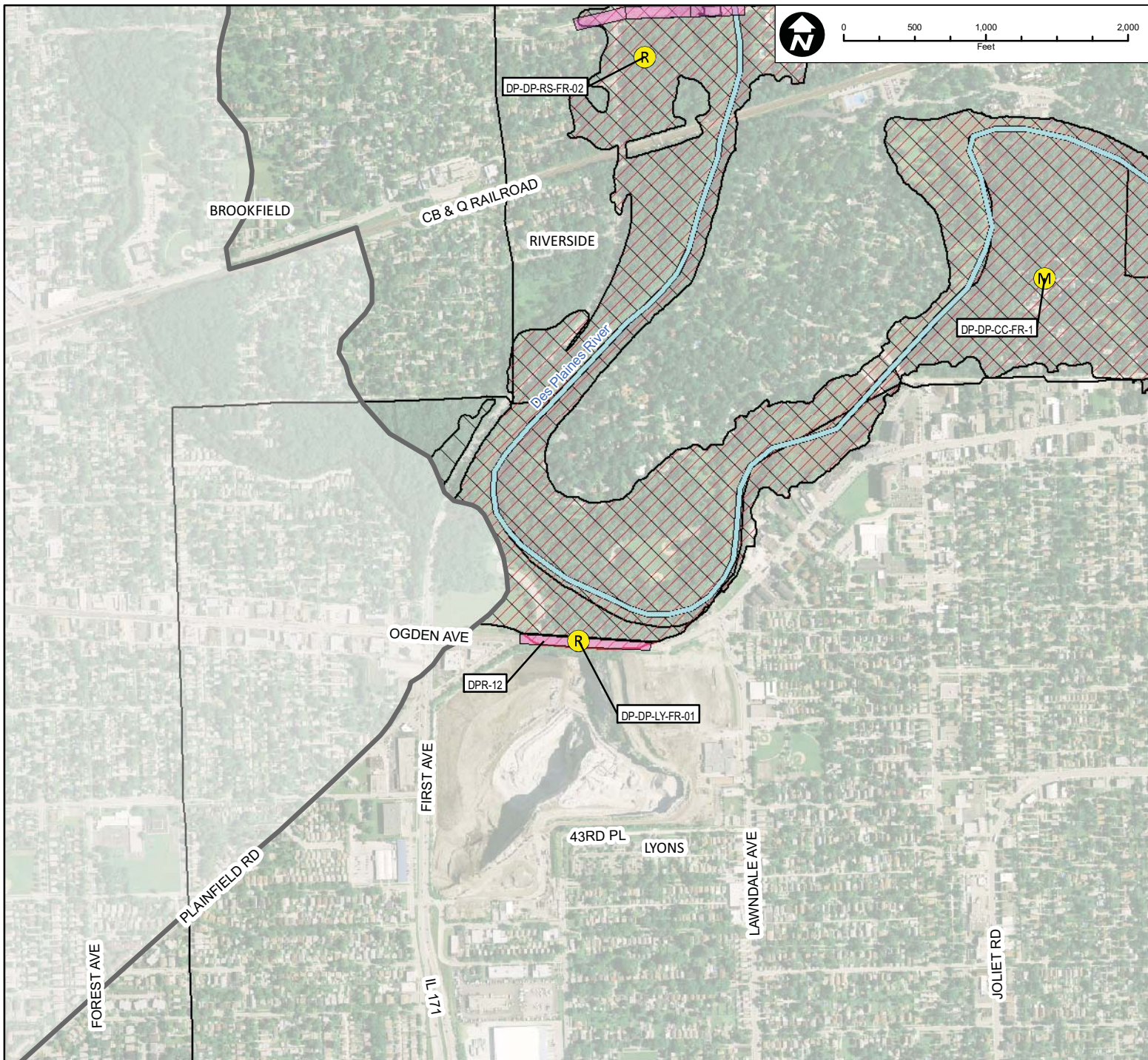


**CHRISTOPHER B. BURKE ENGINEERING, LTD.**  
 9575 W. Higgins Road, Suite 600 · Rosemont, Illinois 60018 · (847) 823-0500

DSGN.	DRW	4-10	SCALE	
DWN.			GIS USER	DRW
CHKD.			PLOT DATE	
FILE:				

**FIGURE 3.6.21**



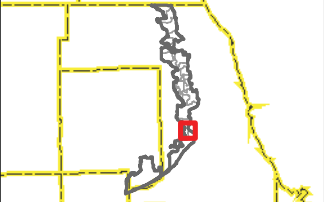


Subwatershed: Des Plaines River  
 Alternative: DPR-12  
 Alternatives Description: Raise approximately 900 feet of Ogden Avenue to 0.5 feet above the 100-year flood inundation.

Concept Level Cost: \$1,029,060  
 Benefits: \$51,782  
 B/C Ratio: 0.05

**Legend**

- 100-Year Storm Event Flood Inundation Without Project
- Culvert/Bridge Modification
- Approximate Creek Channel Location
- Problem Areas** Modeled
- 100-Year Storm Event Flood Inundation With Project
- Channel Improvements
- Municipal Boundary
- Regional
- Reservoir
- Road Improvements
- Levee/Floodwall
- Watershed Boundary



CLIENT:  
**METROPOLITAN WATER RECLAMATION DISTRICT OF GREATER CHICAGO**

TITLE:  
**LOWER DES PLAINES RIVER DETAILED WATERSHED PLAN  
 DES PLAINES RIVER WATERSHED RECOMMENDED ALTERNATIVE DPR-12**

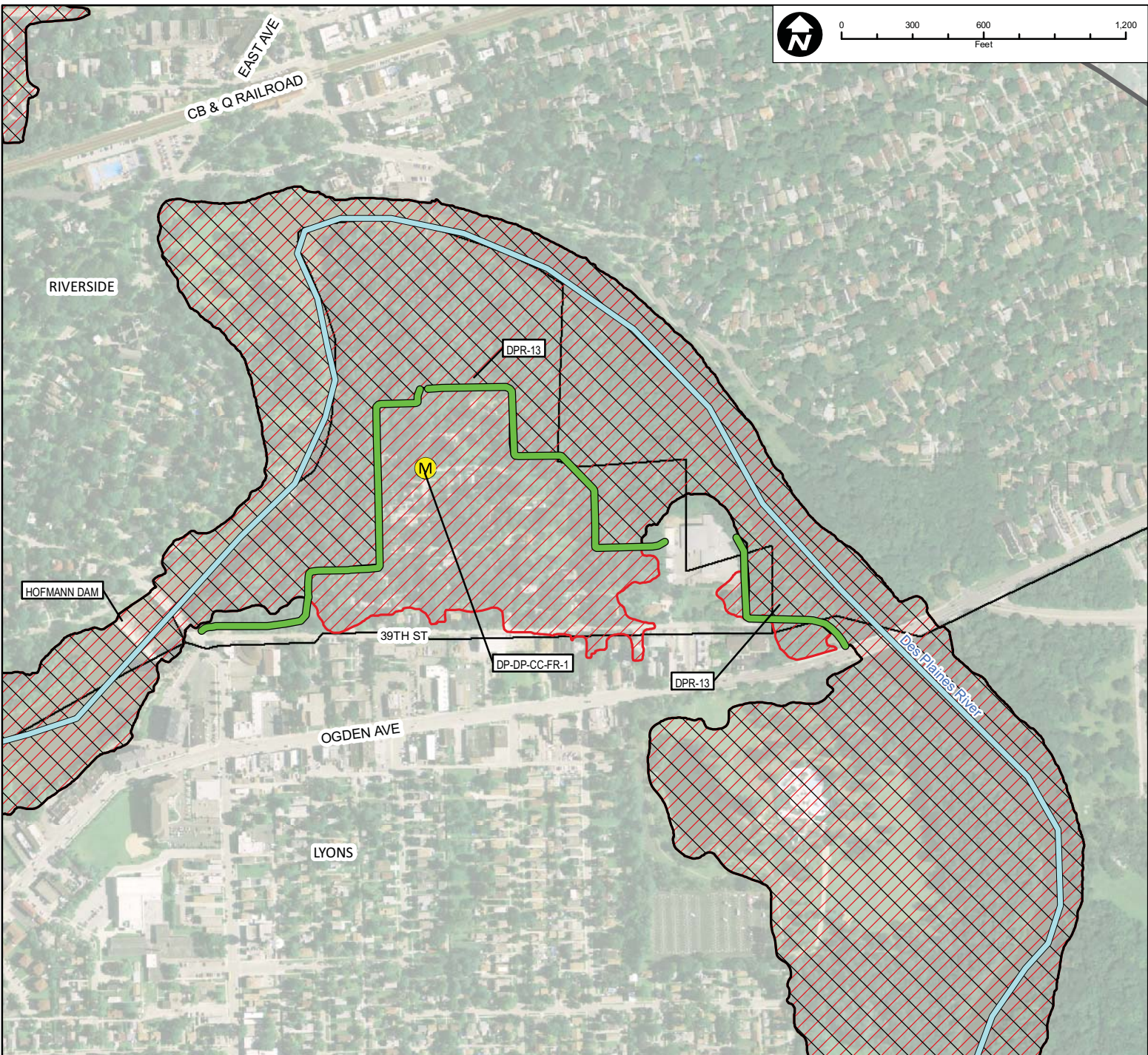
PROJ. NO. 08-0043  
 DATE: 05-21-2010  
 SHEET 1 OF 1  
 DRAWING NO.

**CHRISTOPHER B. BURKE ENGINEERING, LTD.**  
 9575 W. Higgins Road, Suite 600 · Rosemont, Illinois 60018 · (847) 823-0500

DSGN.	DRW	4-10	SCALE	
DWN.			GIS USER	DRW
CHKD.			PLOT DATE	
FILE:				

**FIGURE 3.6.22**

Map Document: (Z:\MWR\DC\08-0043 Phase B\GIS\Exhibits\Meeting Maps\DesPlaines\Des Plaines River Detailed Sheets.mxd) 1/22/2010 11:16:09 AM

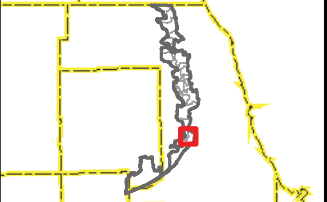


Subwatershed: Des Plaines River  
 Alternative: DPR-13  
 Alternatives Description: Construct 2,400 feet of floodwall along Des Plaines River.

Concept Level Cost: \$9,880,904  
 Benefits: \$14,100,116  
 B/C Ratio: 1.4

**Legend**

- 100-Year Storm Event Flood Inundation Without Project
- 100-Year Storm Event Flood Inundation With Project
- Reservoir
- Road Improvements
- Culvert/Bridge Modification
- Channel Improvements
- Levee/Floodwall
- Approximate Creek Channel Location
- Municipal Boundary
- Watershed Boundary
- Problem Areas**
- Modeled
- Regional



CLIENT:  
**METROPOLITAN WATER RECLAMATION DISTRICT OF GREATER CHICAGO**

TITLE:  
**LOWER DES PLAINES RIVER DETAILED WATERSHED PLAN  
 DES PLAINES RIVER WATERSHED RECOMMENDED ALTERNATIVE DPR-13**

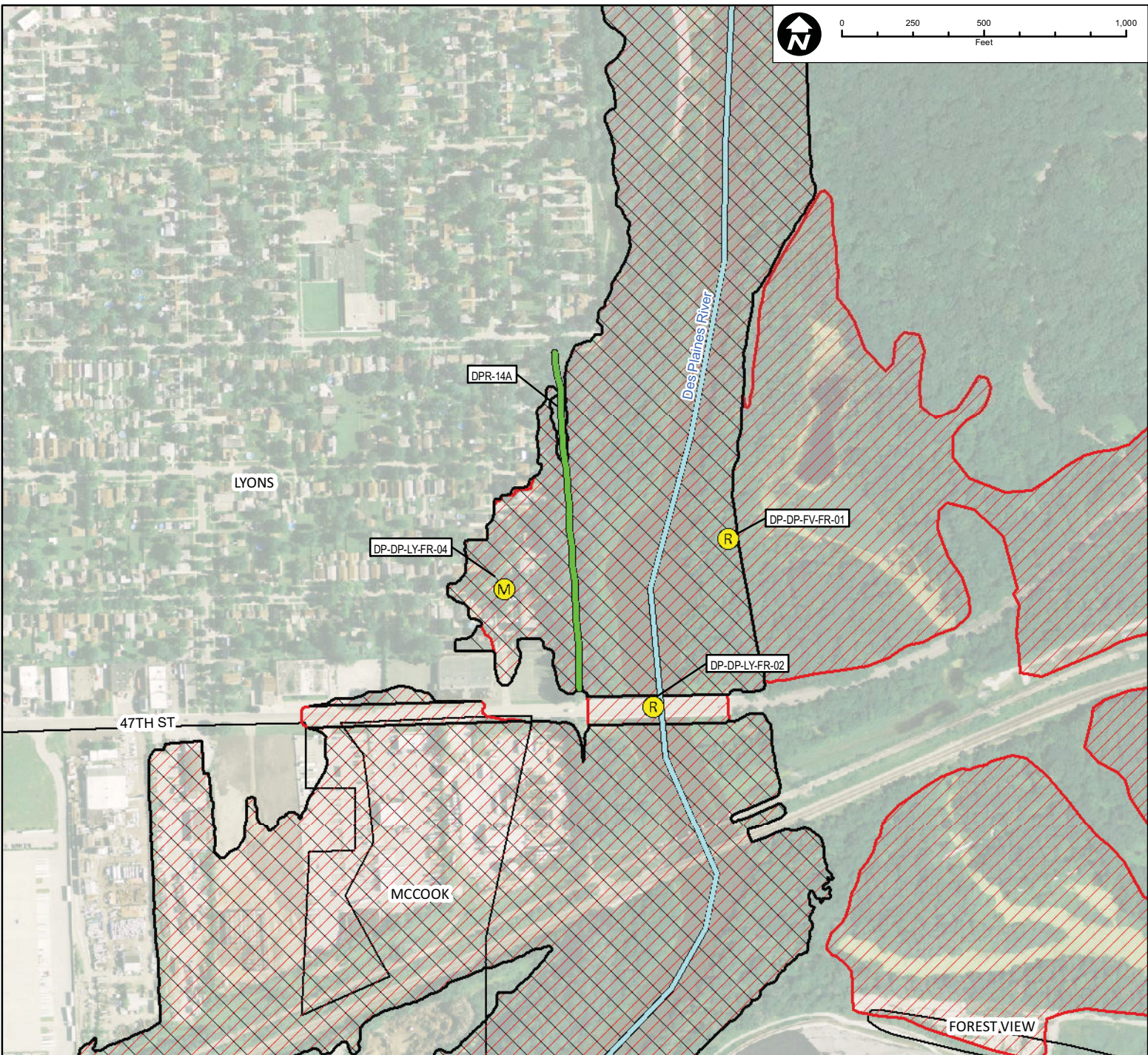
PROJ. NO. 08-0043  
 DATE: 05-21-2010  
 SHEET 1 OF 1  
 DRAWING NO.

**CHRISTOPHER B. BURKE ENGINEERING, LTD.**  
 9575 W. Higgins Road, Suite 600 · Rosemont, Illinois 60018 · (847) 823-0500

DSGN.	DRW	4-10	SCALE	
DWN.			GIS USER	DRW
CHKD.			PLOT DATE	
FILE:				

**FIGURE 3.6.23**

Map Document: (Z:\MWRP\DC\08-0043 Phase B\GIS\Exhibits\Meeting Maps\DesPlaines\Des Plaines River Detailed Sheets.mxd) 1/12/2010 11:16:53 AM

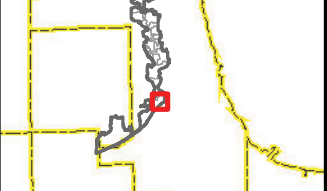


Subwatershed: Des Plaines River  
 Alternative: DPR-14A  
 Alternatives Description: Construct 1,200 feet of floodwall along Des Plaines River.  
 Pump station required to address internal drainage.

Concept Level Cost: \$4,594,661  
 Benefits: \$370,987  
 B/C Ratio: 0.08

**Legend**

- |  |                                                       |  |                             |  |                                    |                      |          |
|--|-------------------------------------------------------|--|-----------------------------|--|------------------------------------|----------------------|----------|
|  | 100-Year Storm Event Flood Inundation Without Project |  | Road Improvements           |  | Approximate Creek Channel Location | <b>Problem Areas</b> |          |
|  | 100-Year Storm Event Flood Inundation With Project    |  | Culvert/Bridge Modification |  | Municipal Boundary                 |                      |          |
|  | Reservoir                                             |  | Channel Improvements        |  | Watershed Boundary                 |                      | Regional |
|  | Levee/Floodwall                                       |  |                             |  |                                    |                      |          |



CLIENT:  
**METROPOLITAN WATER RECLAMATION DISTRICT OF GREATER CHICAGO**

TITLE:  
**LOWER DES PLAINES RIVER DETAILED WATERSHED PLAN  
 DES PLAINES RIVER WATERSHED RECOMMENDED ALTERNATIVE DPR-14A**

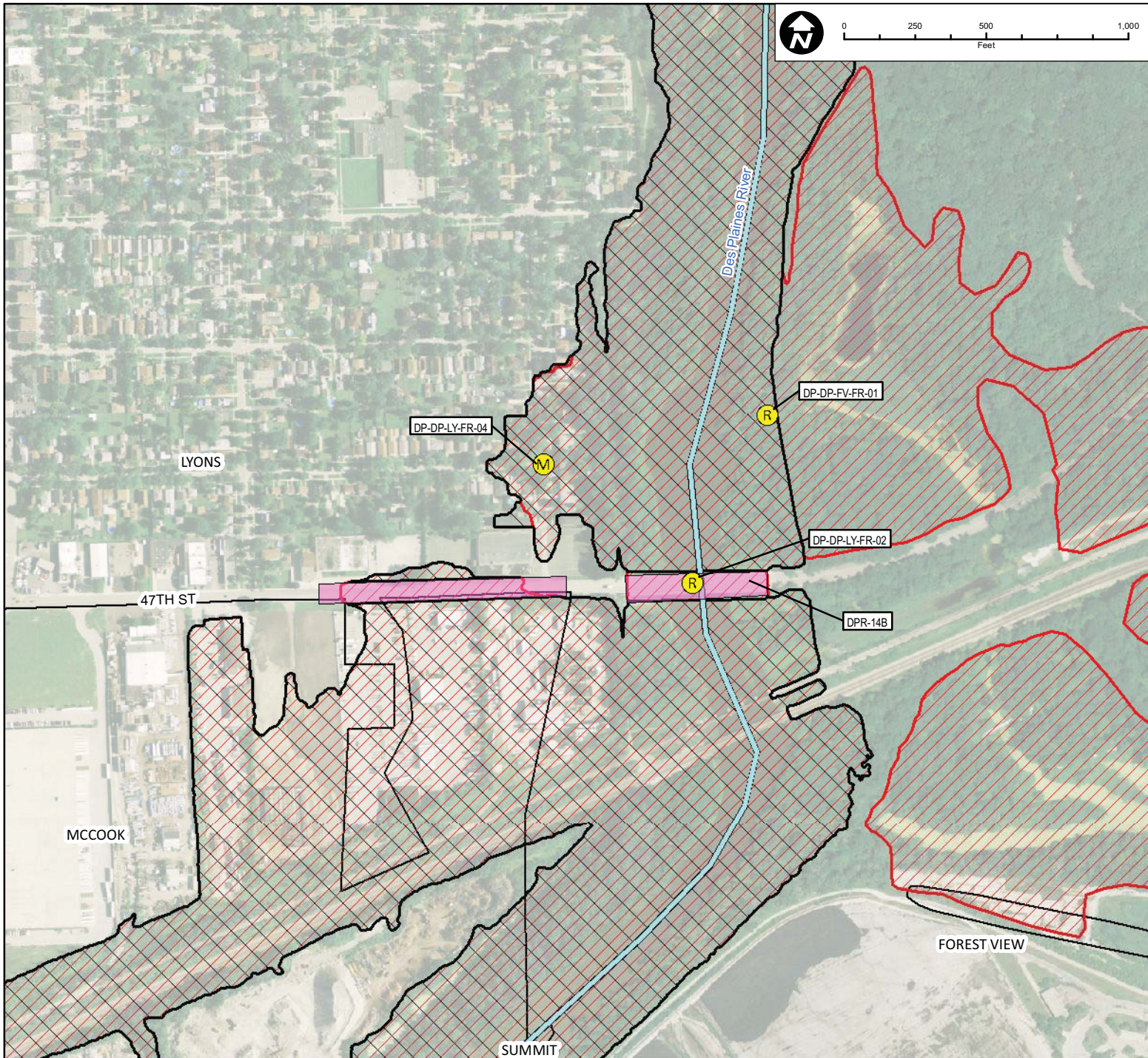
PROJ. NO. 08-0043  
 DATE: 05-21-2010  
 SHEET 1 OF 1  
 DRAWING NO.

**CHRISTOPHER B. BURKE ENGINEERING, LTD.**  
 9575 W. Higgins Road, Suite 600 · Rosemont, Illinois 60018 · (847) 823-0500

DSGN.	DRW	4-10	SCALE	
DWN.			GIS USER	DRW
CHKD.			PLOT DATE	
FILE:				

**FIGURE 3.6.24**

Map Document: (Z:\MWR\RDCC\08-0043 Phase B\GIS\Exhibits\Meeting Maps\Des Plaines\Des Plaines River Detailed Sheets.mxd) 1/12/2010 10:56:34 AM

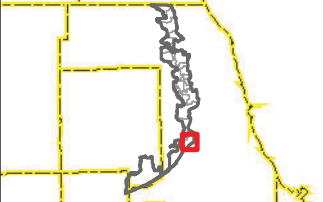


Subwatershed: Des Plaines River  
 Alternative: DPR-14B  
 Alternatives Description: Raise 47th Street to 0.5 feet above 100-year flood inundation.

Concept Level Cost: \$18,200,778  
 Benefits: \$269,713  
 B/C Ratio: 0.01

**Legend**

- 100-Year Storm Event Flood Inundation Without Project
- 100-Year Storm Event Flood Inundation With Project
- Reservoir
- Road Improvements
- Culvert/Bridge Modification
- Channel Improvements
- Levee/Floodwall
- Approximate Creek Channel Location
- Municipal Boundary
- Watershed Boundary
- Problem Areas**
- Modeled
- Regional



CLIENT:  
**METROPOLITAN WATER RECLAMATION DISTRICT OF GREATER CHICAGO**

TITLE:  
**LOWER DES PLAINES RIVER DETAILED WATERSHED PLAN  
 DES PLAINES RIVER WATERSHED RECOMMENDED ALTERNATIVE DPR-14B**

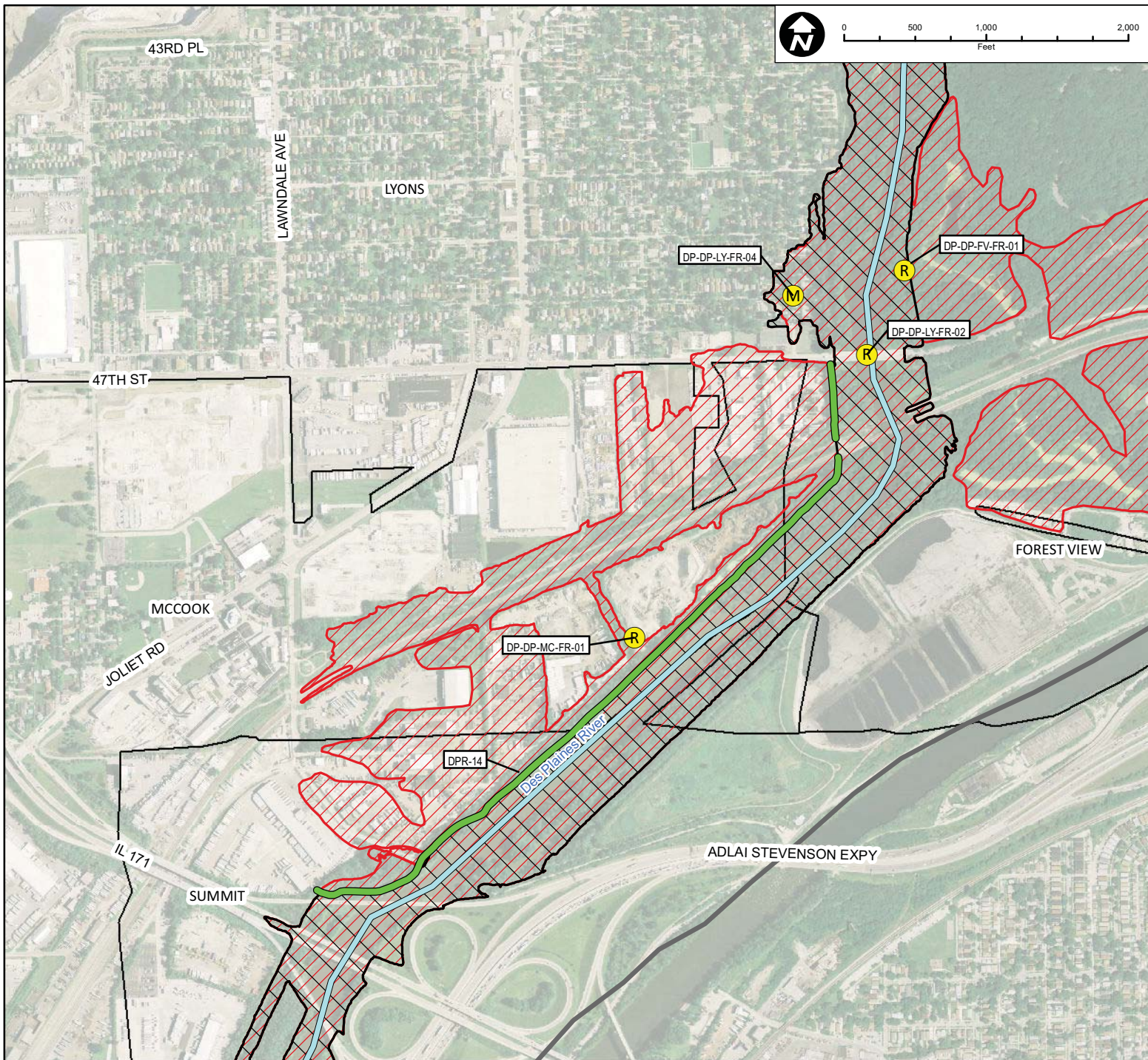
PROJ. NO. 08-0043  
 DATE: 05-21-2010  
 SHEET 1 OF 1  
 DRAWING NO.

**CHRISTOPHER B. BURKE ENGINEERING, LTD.**  
 9575 W. Higgins Road, Suite 600 · Rosemont, Illinois 60018 · (847) 823-0500

DSGN.	DRW	4-10	SCALE	
DWN.			GIS USER	DRW
CHKD.			PLOT DATE	
FILE:				

**FIGURE 3.6.25**

Map Document: (Z:\MWR\RDCC\08-0043 Phase B\GIS\Exhibits\Meeting Maps\DesPlaines\Des Plaines River Detailed Sheets.mxd) 1/22/2010 11:12:10 AM



Subwatershed: Des Plaines River  
 Alternative: DPR-14C

Alternatives Description: McCook levee enhancement.

Construct 5,000 feet of sheet piling floodwall along Des Plaines River to bring existing McCook levee to 3 feet above 100-year flood inundation.

Concept Level Cost: \$8,265,570  
 Benefits: \$1,350,067  
 B/C Ratio: 0.2

**Legend**

- 100-Year Storm Event Flood Inundation Without Project
- 100-Year Storm Event Flood Inundation With Project
- Reservoir
- Road Improvements
- Culvert/Bridge Modification
- Channel Improvements
- Levee/Floodwall
- Approximate Creek Channel Location
- Municipal Boundary
- Watershed Boundary
- Problem Areas**
- Modeled
- Regional



CLIENT:  
**METROPOLITAN WATER RECLAMATION DISTRICT OF GREATER CHICAGO**

TITLE:  
**LOWER DES PLAINES RIVER DETAILED WATERSHED PLAN  
 DES PLAINES RIVER WATERSHED RECOMMENDED ALTERNATIVE DPR-14C**

PROJ. NO. 08-0043  
 DATE: 05-21-2010  
 SHEET 1 OF 1  
 DRAWING NO.

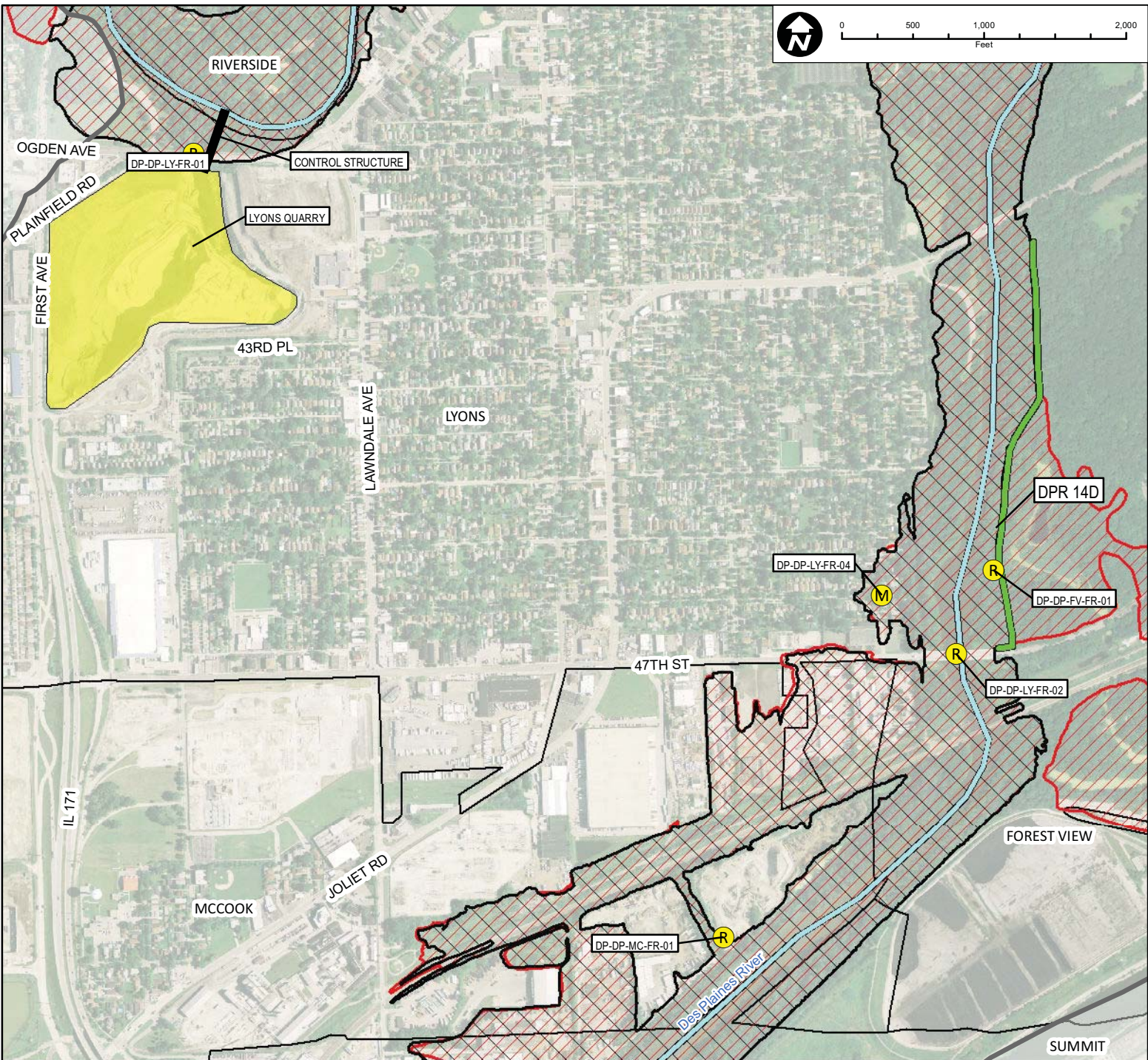


**CHRISTOPHER B. BURKE ENGINEERING, LTD.**  
 9575 W. Higgins Road, Suite 600 • Rosemont, Illinois 60018 • (847) 823-0500

DSGN.	DRW	4-10	SCALE	
DWN.			GIS USER	DRW
CHKD.			PLOT DATE	
FILE:				

**FIGURE 3.6.26**

Map Document: (Z:\MWR\RGCC\08-0043 Phase B\GIS\Exhibits\Meeting Maps\DesPlaines\Des Plaines River Detailed Sheets.mxd) 1/22/2010 11:15:37 AM



Subwatershed: Des Plaines River  
 Alternative: DPR-14D

Alternatives Description: Construct 3,000 feet of floodwall east of Des Plaines River north of 47th Street. Pump stations required to address internal drainage.

Concept Level Cost: \$260,991,361  
 Benefits: \$8,621,560  
 B/C Ratio: 0.03

**Legend**

- |  |                                                       |  |                             |  |                                    |                      |          |
|--|-------------------------------------------------------|--|-----------------------------|--|------------------------------------|----------------------|----------|
|  | 100-Year Storm Event Flood Inundation Without Project |  | Road Improvements           |  | Approximate Creek Channel Location | <b>Problem Areas</b> |          |
|  | 100-Year Storm Event Flood Inundation With Project    |  | Culvert/Bridge Modification |  | Municipal Boundary                 |                      |          |
|  | Reservoir                                             |  | Channel Improvements        |  | Watershed Boundary                 |                      | Regional |
|  | Levee/Floodwall                                       |  |                             |  |                                    |                      |          |



CLIENT:  
**METROPOLITAN WATER RECLAMATION DISTRICT OF GREATER CHICAGO**

TITLE:  
**LOWER DES PLAINES RIVER DETAILED WATERSHED PLAN  
 DES PLAINES RIVER WATERSHED RECOMMENDED ALTERNATIVE DPR-14D**

PROJ. NO. 08-0043  
 DATE: 05-21-2010  
 SHEET 1 OF 1  
 DRAWING NO.

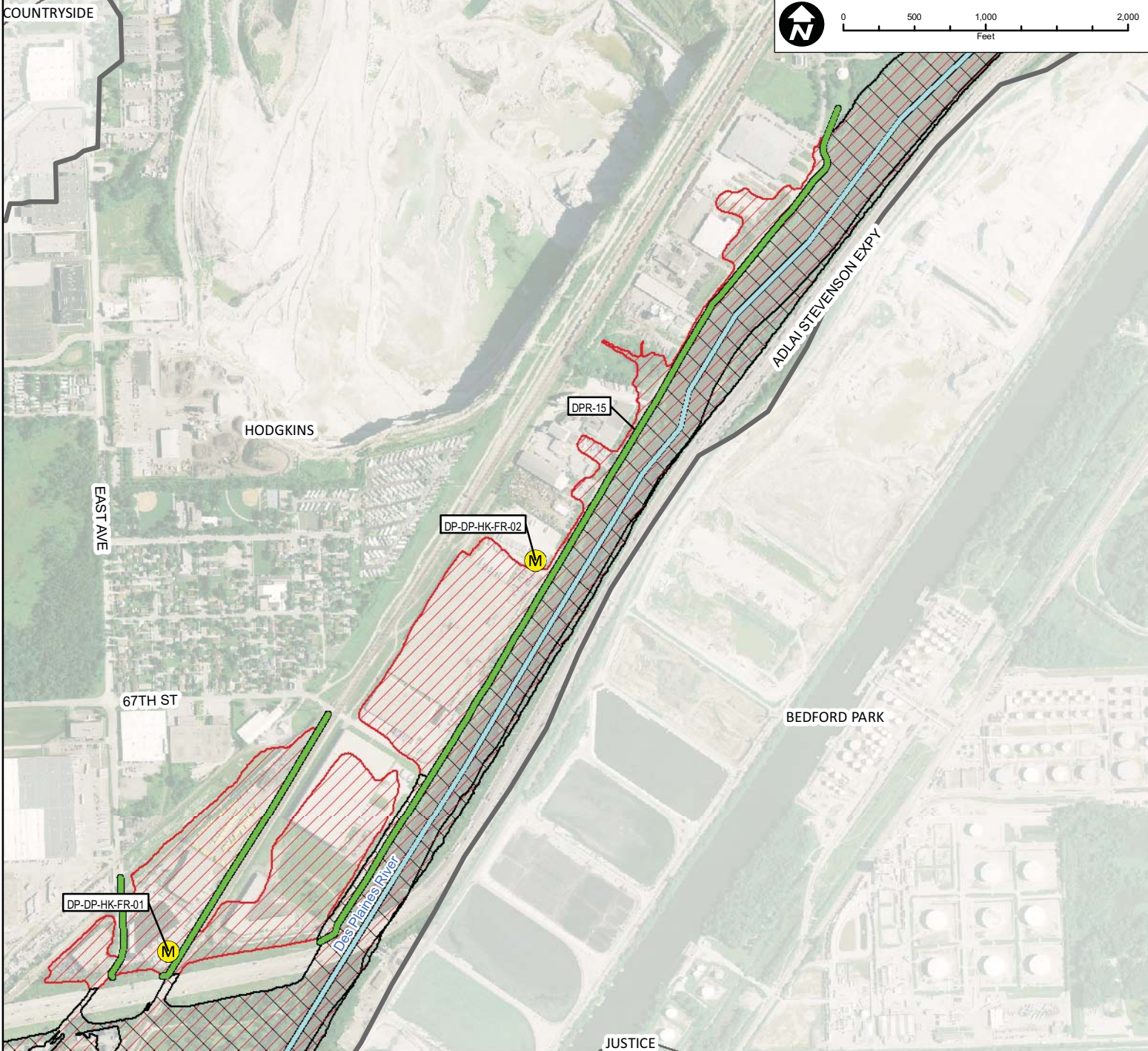


**CHRISTOPHER B. BURKE ENGINEERING, LTD.**  
 9575 W. Higgins Road, Suite 600 • Rosemont, Illinois 60018 • (847) 823-0500

DSGN.	DRW	4-10	SCALE	
DWN.			GIS USER	DRW
CHKD.			PLOT DATE	
FILE:				

**FIGURE 3.6.27**

Map Document: (Z:\MWR\DRCC\08-0043 Phase B\GIS\Exhibits\Meeting Maps\DesPlaines\Des Plaines River Detailed Sheets.mxd) 1/12/2010 11:24:12 AM



Subwatershed: Des Plaines River  
 Alternative: DPR-15  
 Alternatives Description: Construct 6,500 feet of levee/floodwall along Des Plaines River.  
 Pump stations required to address internal drainage.

Concept Level Cost: \$25,785,787  
 Benefits: \$194,043  
 B/C Ratio: <0.01

**Legend**

- 100-Year Storm Event Flood Inundation Without Project
- 100-Year Storm Event Flood Inundation With Project
- Reservoir
- Road Improvements
- Culvert/Bridge Modification
- Channel Improvements
- Levee/Floodwall
- Approximate Creek Channel Location
- Municipal Boundary
- Watershed Boundary
- Problem Areas**
- Modeled
- Regional



CLIENT:  
**METROPOLITAN WATER RECLAMATION DISTRICT OF GREATER CHICAGO**

TITLE:  
**LOWER DES PLAINES RIVER DETAILED WATERSHED PLAN  
 DES PLAINES RIVER WATERSHED RECOMMENDED ALTERNATIVE DPR-15**

PROJ. NO. 08-0043  
 DATE: 05-21-2010  
 SHEET 1 OF 1  
 DRAWING NO.

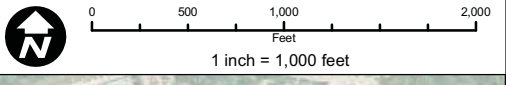
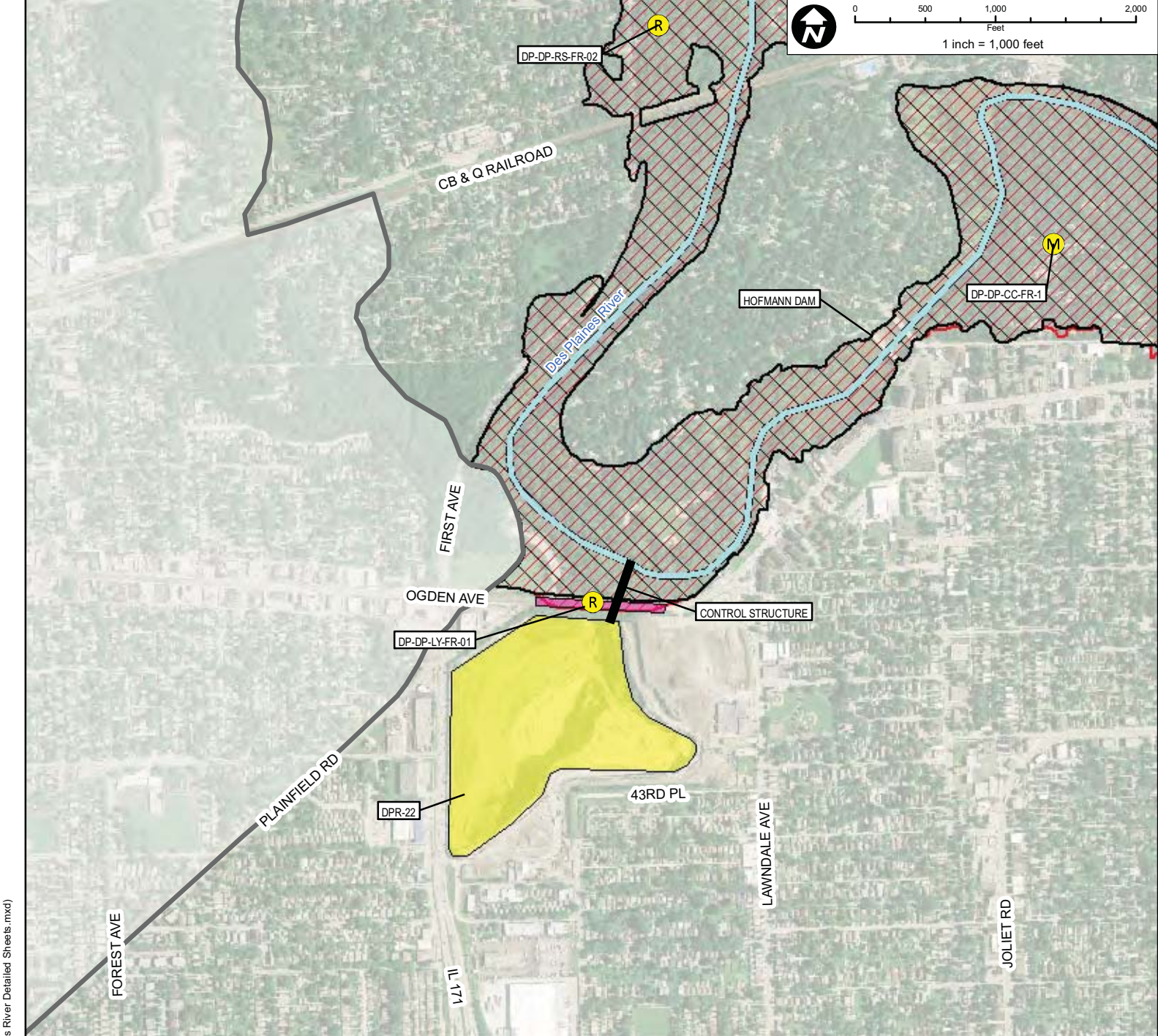


**CHRISTOPHER B. BURKE ENGINEERING, LTD.**  
 9575 W. Higgins Road, Suite 600 • Rosemont, Illinois 60018 • (847) 823-0500

DSGN.	DRW	4-10	SCALE	
DWN.			GIS USER	DRW
CHKD.			PLOT DATE	
FILE:				

**FIGURE 3.6.28**

Map Document: (Z:\MWR\DC\08-0043 Phase B\GIS\Exhibits\Meeting Maps\DesPlaines\Des Plaines River Detailed Sheets.mxd) 1/22/2010 11:25:12 AM



Subwatershed: Des Plaines River  
 Alternative: DPR-22  
 Alternatives Description: Storage in Lyons Quarry with control structure at the Des Plaines River.  
 Raise Ogden Avenue.

Concept Level Cost: \$251,163,010  
 Benefits: \$648,217  
 B/C Ratio: <0.01

**Legend**

- |  |                                                       |  |                             |  |                                    |  |                                 |
|--|-------------------------------------------------------|--|-----------------------------|--|------------------------------------|--|---------------------------------|
|  | 100-Year Storm Event Flood Inundation Without Project |  | Road Improvements           |  | Approximate Creek Channel Location |  | <b>Problem Areas</b><br>Modeled |
|  | 100-Year Storm Event Flood Inundation With Project    |  | Culvert/Bridge Modification |  | Municipal Boundary                 |  | Regional                        |
|  | Reservoir                                             |  | Channel Improvements        |  | Watershed Boundary                 |  |                                 |
|  | Levee/Floodwall                                       |  |                             |  |                                    |  |                                 |



CLIENT:  
**METROPOLITAN WATER RECLAMATION DISTRICT OF GREATER CHICAGO**

TITLE:  
**LOWER DES PLAINES RIVER DETAILED WATERSHED PLAN  
 DES PLAINES RIVER WATERSHED PROPOSED ALTERNATIVE DPR-22**

PROJ. NO. 08-0043  
 DATE: 05-21-2010  
 SHEET 1 OF 1  
 DRAWING NO.

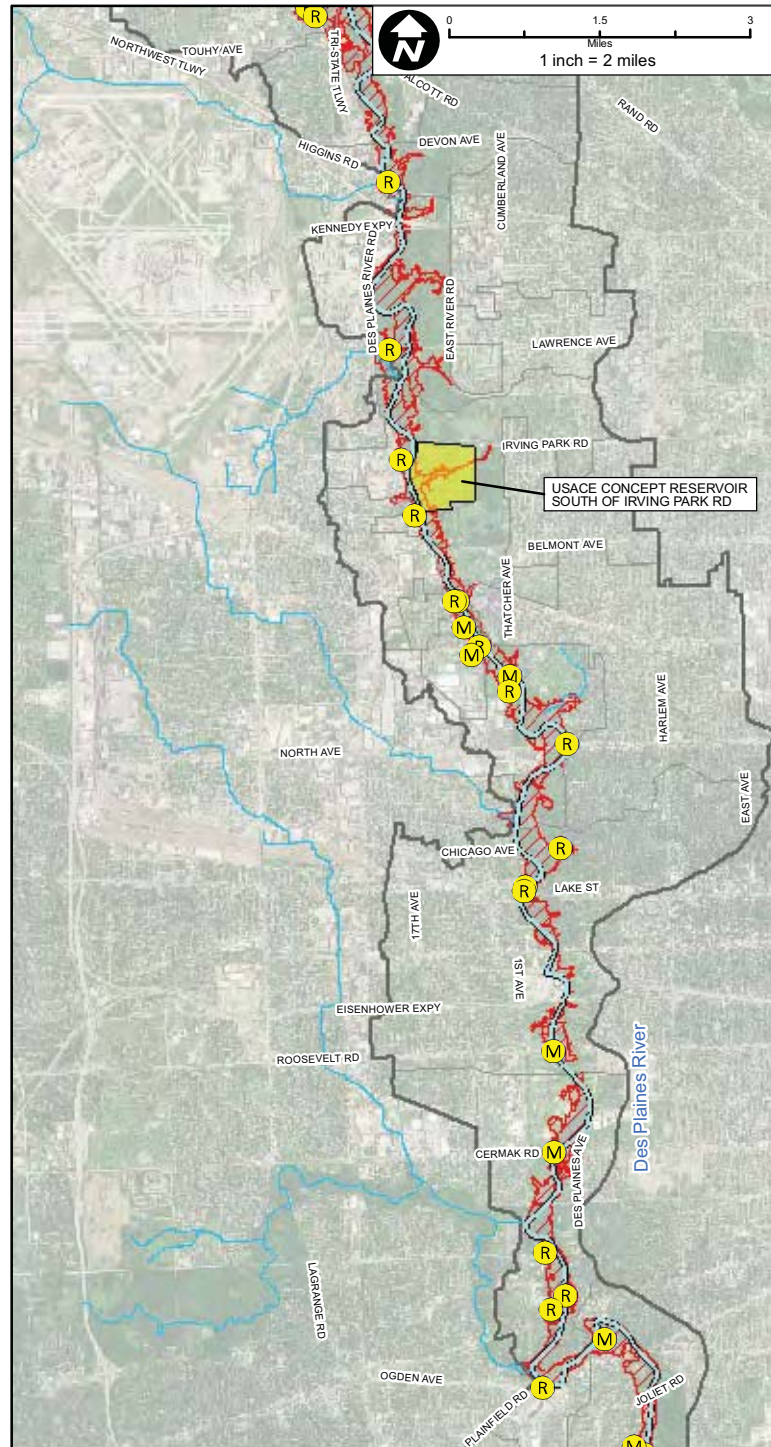
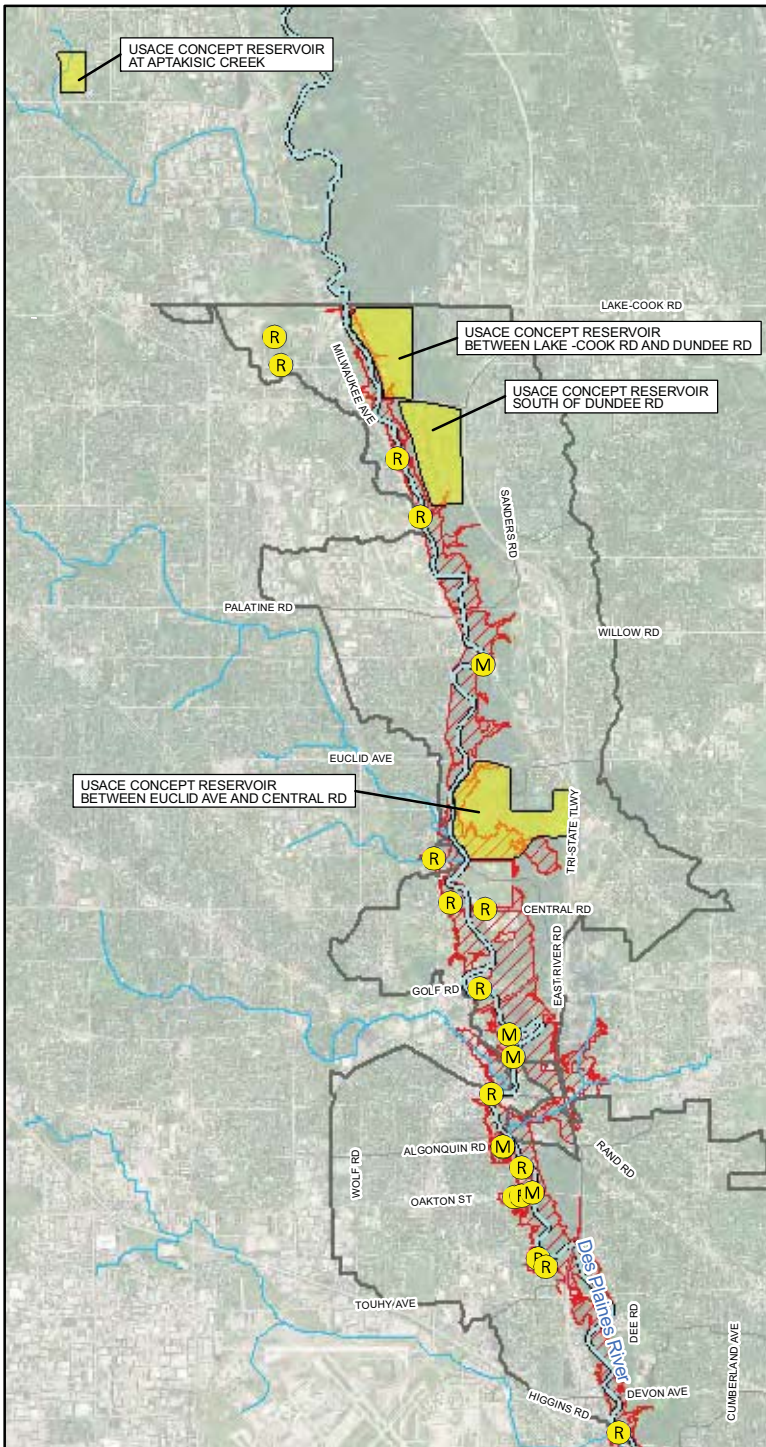
**CHRISTOPHER B. BURKE ENGINEERING, LTD.**  
 9575 W. Higgins Road, Suite 600 · Rosemont, Illinois 60018 · (847) 823-0500

DSGN.	DRW	4-10	SCALE	1" = 1,000'
DWN.			GIS USER	DRW
CHKD.			PLOT DATE	
FILE:				

**FIGURE 3.6.29**

Map Document: \\ZAM\WRDCC\08-0043 Phase 3\GIS\Exhibits\Meeting Maps\DesPlaines\Des Plaines River Detailed Sheets.mxd 10/27/2010 3:15:22 PM





Subwatershed: Des Plaines River  
 Alternative: DPR-23  
 Alternatives Description: 5 USACE Concept Reservoirs

Concept Level Cost: > \$600,000,000  
 Benefits: \$5,000,000  
 B/C Ratio: < 0.01

**Legend**

100-Year Storm Event Flood Inundation Without Project	Road Improvements	Approximate Creek Channel Location	<b>Problem Areas</b> Modeled Regional
100-Year Storm Event Flood Inundation With Project	Culvert/Bridge Modification	Municipal Boundary	
Reservoir	Channel Improvements	Watershed Boundary	
	Levee/Floodwall		



CLIENT:  
**METROPOLITAN WATER RECLAMATION DISTRICT OF GREATER CHICAGO**

TITLE:  
**LOWER DES PLAINES RIVER DETAILED WATERSHED PLAN  
 DES PLAINES RIVER WATERSHED PROPOSED ALTERNATIVE DPR 23**

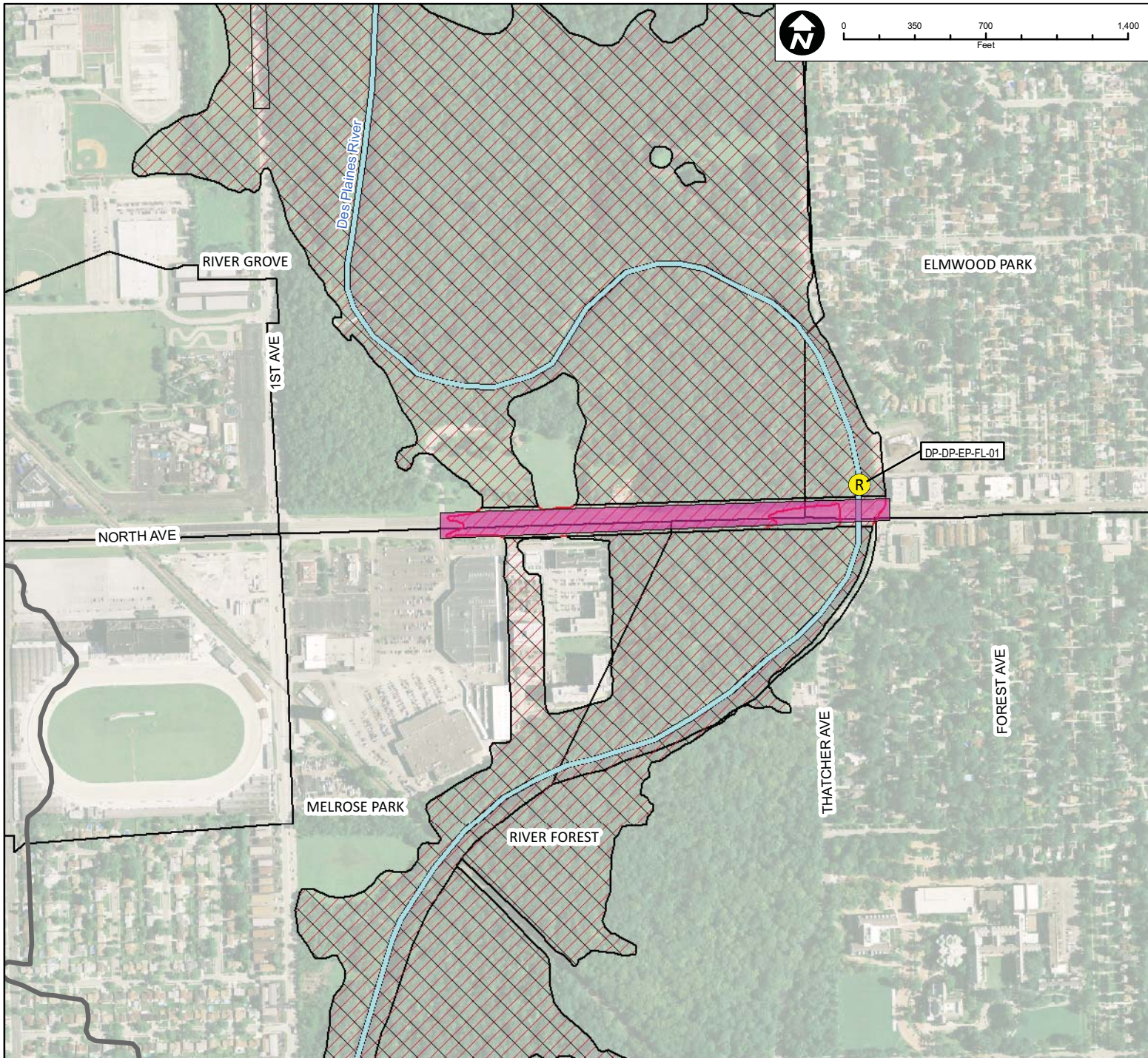
PROJ. NO. 08-0043  
 DATE: 04-26-2010  
 SHEET 1 OF 1  
 DRAWING NO.

**CHRISTOPHER B. BURKE ENGINEERING, LTD.**  
 9575 W. Higgins Road, Suite 600 · Rosemont, Illinois 60018 · (847) 823-0500

DSGN.	DRW	4-10	SCALE:	1"=4,000'
DWN.			GIS USER	DRW
CHKD.			PLOT DATE	
FILE:				

**FIGURE 3.6.30**

Map Document: Z:\MWR\DCG\08-0043 Phase B\GIS\Exhibits\Meeting Maps\DesPlainesDes Plaines River Reservoir 1.mxd 9/29/2010 3:38:03 PM

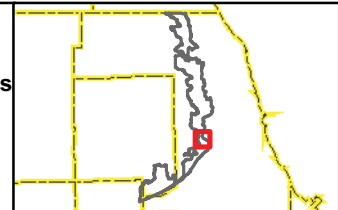


Subwatershed: Des Plaines River  
 Alternative: DPR-26  
 Alternatives Description: Raise approximately 2,000 feet of North Avenue to 0.5 feet above 100-year flood inundation.

Concept Level Cost: \$4,243,200  
 Benefits: \$322,411  
 B/C Ratio: 0.08

**Legend**

- |  |                                                       |  |                             |  |                                    |  |                        |
|--|-------------------------------------------------------|--|-----------------------------|--|------------------------------------|--|------------------------|
|  | 100-Year Storm Event Flood Inundation Without Project |  | Road Improvements           |  | Approximate Creek Channel Location |  | Modeled Problem Areas  |
|  | 100-Year Storm Event Flood Inundation With Project    |  | Culvert/Bridge Modification |  | Municipal Boundary                 |  | Regional Problem Areas |
|  | Reservoir                                             |  | Channel Improvements        |  | Watershed Boundary                 |  |                        |
|  | Levee/Floodwall                                       |  |                             |  |                                    |  |                        |



CLIENT:  
**METROPOLITAN WATER RECLAMATION DISTRICT OF GREATER CHICAGO**

TITLE:  
**LOWER DES PLAINES RIVER DETAILED WATERSHED PLAN  
 DES PLAINES RIVER WATERSHED RECOMMENDED ALTERNATIVE DPR-26**

PROJ. NO. 08-0043  
 DATE: 05-21-2010  
 SHEET 1 OF 1  
 DRAWING NO.

**CHRISTOPHER B. BURKE ENGINEERING, LTD.**  
 9575 W. Higgins Road, Suite 600 · Rosemont, Illinois 60018 · (847) 823-0500

DSGN.	DRW	4-10	SCALE	
DWN.			GIS USER	DRW
CHKD.			PLOT DATE	
FILE:				

**FIGURE 3.6.31**

Map Document: (Z:\MWR\DC\08-0043 Phase BIG\IS\Exhibits\Meeting Maps\DesPlaines\Des Plaines River Detailed Sheets.mxd) 1/22/2010 11:16:17 AM