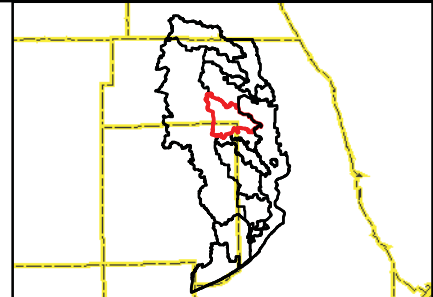


- 100-Year Storm Event Flood Inundation Without Project
- Reservoir
- Channel Improvements
- Culvert/Bridge Modification
- Levee/Floodwall
- Streambank Stabilization

- Approximate Creek Channel Location
- Municipal Boundary
- Watershed Boundary

- Problem Areas**
- Modeled
 - Regional



CLIENT:
METROPOLITAN WATER RECLAMATION DISTRICT OF GREATER CHICAGO

TITLE:
**LOWER DES PLAINES RIVER DETAILED WATERSHED PLAN
 WILLOW CREEK WATERSHED TRIBUTARY OVERVIEW**

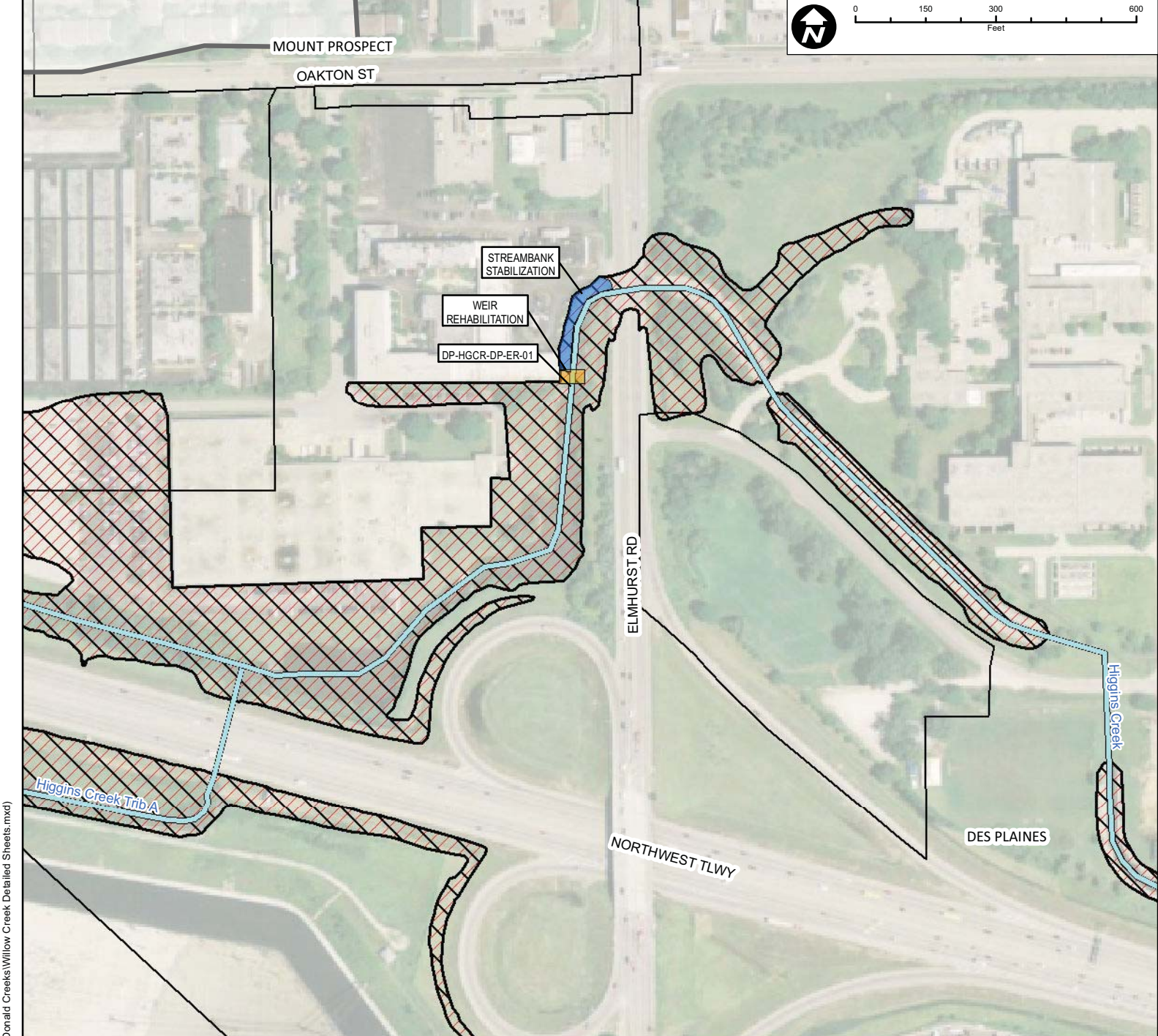
PROJ. NO. 08-0043
 DATE: 04-29-2010
 SHEET 1 OF 1
 DRAWING NO.

CHRISTOPHER B. BURKE ENGINEERING, LTD.
 9575 W. Higgins Road, Suite 600 · Rosemont, Illinois 60018 · (847) 823-0500

DSGN.	DRW	4-10	SCALE:	
DWN.			GIS USER	DRW
CHKD.			PLOT DATE	
FILE:				

FIGURE 3.17.1

Map Document: Z:\MWRD\GCC\08-0043 Phase B\GIS\Exhibits\Meeting Maps\Feehanville Willow McDonald Creeks\Willow Creek Overall.mxd 11/19/2010 -- 9:00:39 AM

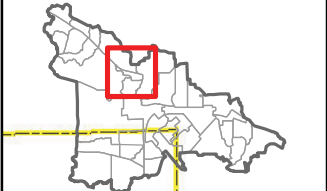


Subwatershed: Willow Creek
 Alternative: HGCR-1
 Alternatives Description: Weir rehabilitation.
 Streambank stabilization on west bank of creek between weir and Elmhurst Road.

Concept Level Cost: \$762,604
 Benefits: \$246,547
 B/C Ratio: 0.3

Legend

100-Year Storm Event Flood Inundation Without Project	Culvert/Bridge Modification	Approximate Creek Channel Location	Problem Areas Modeled Regional
100-Year Storm Event Flood Inundation With Project	Channel Improvements	Municipal Boundary	
Reservoir	Streambank Stabilization	Watershed Boundary	
Levee/Floodwall			



CLIENT:
METROPOLITAN WATER RECLAMATION DISTRICT OF GREATER CHICAGO

TITLE:
**LOWER DES PLAINES RIVER DETAILED WATERSHED PLAN
 WILLOW CREEK WATERSHED
 RECOMMENDED ALTERNATIVE HGCR-1**

PROJ. NO. 08-0043
 DATE: 04-29-2010
 SHEET 1 OF 1
 DRAWING NO.

CHRISTOPHER B. BURKE ENGINEERING, LTD.
 9575 W. Higgins Road, Suite 600 · Rosemont, Illinois 60018 · (847) 823-0500

DSGN.	DRW	4-10	SCALE	
DWN.			GIS USER	DRW
CHKD.			PLOT DATE	
FILE:				

FIGURE 3.17.2

Map Document: (Z:\MWRD\GCC\08-0043 Phase B\GIS\Exhibits\Meeting Maps\Feehanville Willow McDonald Creeks\Willow Creek Detailed Sheets.mxd) 8/17/2010 - 2:04:34 PM