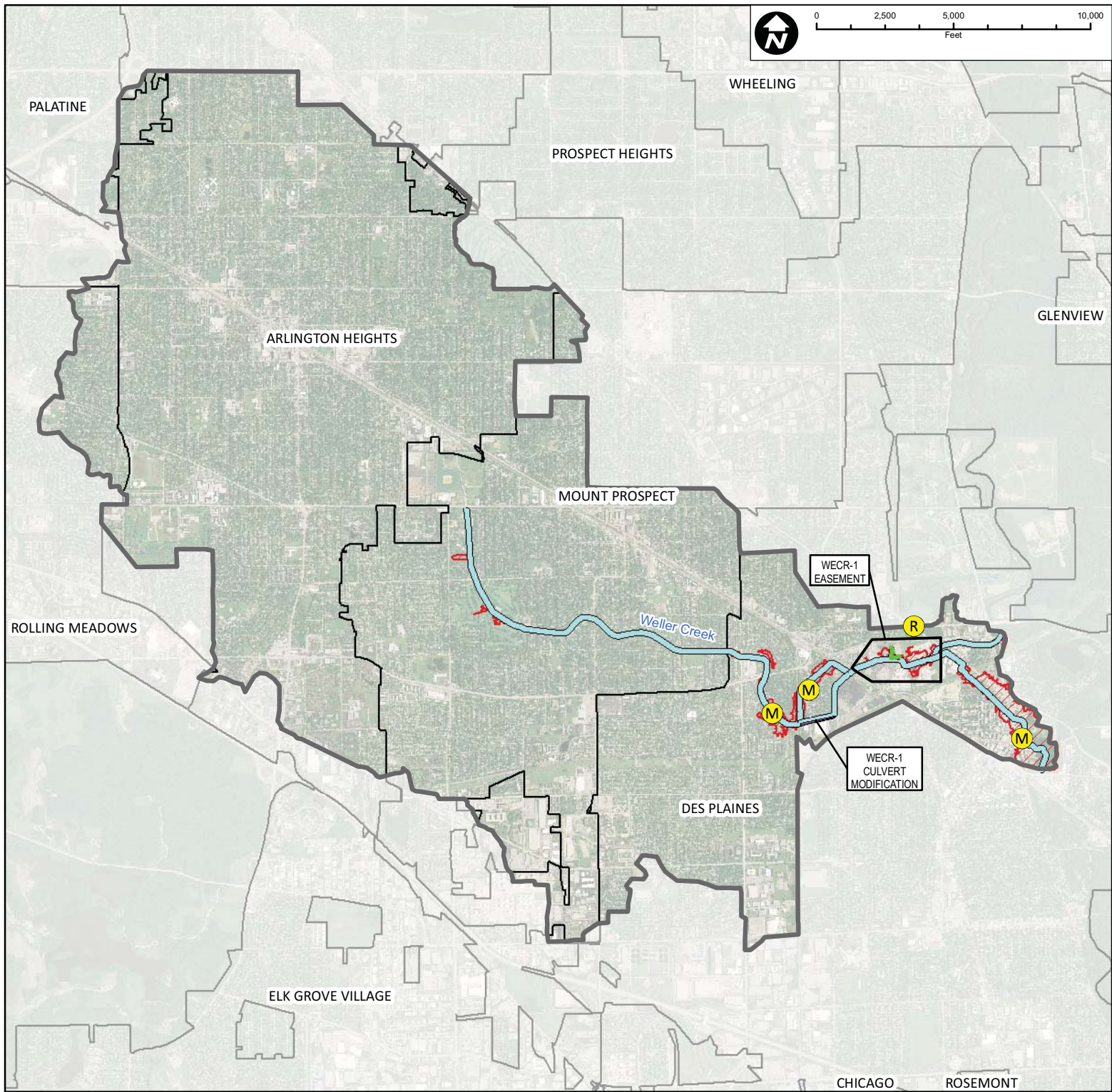
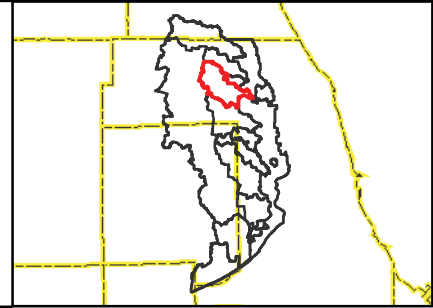


Map Document: (Z:\MWR\RDGC\08-0043 Phase B\GIS\Exhibits\Meeting Maps\Feehanville Willow McDonald Creeks\Weller Creek Overall.mxd) 10/26/2010 -- 10:36:16



- 100-Year Storm Event Flood Inundation Without Project
- Reservoir
- Channel Improvements
- Culvert/Bridge Modification
- Levee/Floodwall

- Approximate Creek Channel Location
 - Municipal Boundary
 - Watershed Boundary
- Problem Areas**
- Modeled
 - Regional



CLIENT:
METROPOLITAN WATER RECLAMATION DISTRICT OF GREATER CHICAGO

TITLE:
**LOWER DES PLAINES RIVER DETAILED WATERSHED PLAN
 WELLER CREEK WATERSHED TRIBUTARY OVERVIEW**

PROJ. NO. 08-0043
 DATE: 04-29-2010
 SHEET 1 OF 1
 DRAWING NO.

CHRISTOPHER B. BURKE ENGINEERING, LTD.
 9575 W. Higgins Road, Suite 600 · Rosemont, Illinois 60018 · (847) 823-0500

DSGN.	DRW	4-10	SCALE:	
DWN.			GIS USER	DRW
CHKD.			PLOT DATE	
FILE:				

FIGURE 3.16.1

