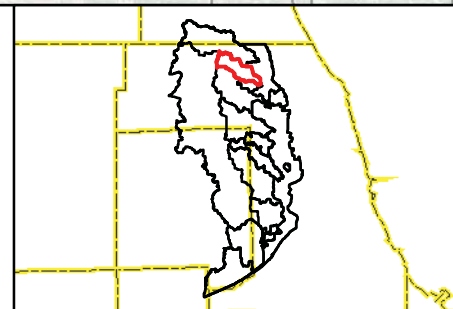


- 100-Year Storm Event Flood Inundation Without Project
- Reservoir
- Channel Improvements
- Culvert/Bridge Modification
- Levee/Floodwall
- Road Improvements

- Approximate Creek Channel Location
- Municipal Boundary
- Watershed Boundary

Problem Areas

- Modeled
- Regional



CLIENT:
METROPOLITAN WATER RECLAMATION DISTRICT OF GREATER CHICAGO

TITLE:
**LOWER DES PLAINES RIVER DETAILED WATERSHED PLAN
 MCDONALD CREEK WATERSHED TRIBUTARY OVERVIEW**

PROJ. NO. 08-0043
 DATE: 04-29-2010
 SHEET 1 OF 1
 DRAWING NO.

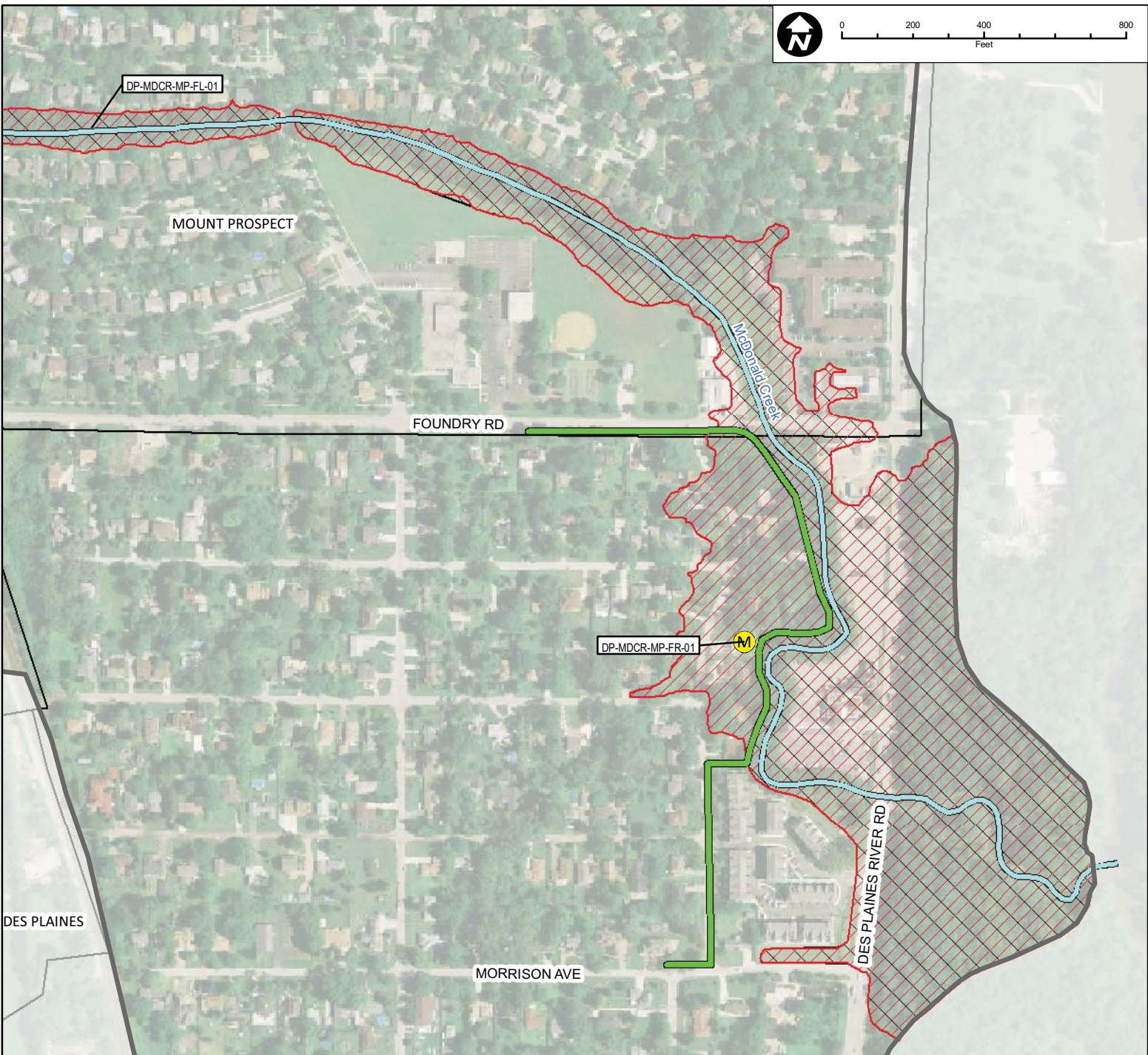


CHRISTOPHER B. BURKE ENGINEERING, LTD.
 9575 W. Higgins Road, Suite 600 · Rosemont, Illinois 60018 · (847) 823-0500

DSGN.	DRW	4-10	SCALE:	
DWN.			GIS USER	DRW
CHKD.			PLOT DATE	
FILE:				

FIGURE 3.13.1

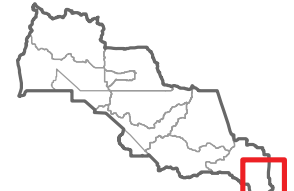
Map Document: Z:\MWR\DC\08-0043 Phase B\GIS\Exhibits\Meeting Maps\Feehanville Willow McDonald Creeks\McDonald Creek Overall.mxd
 11/19/2010 -- 8:56:22 AM



Subwatershed: McDonald Creek
 Alternative: MDCR-3
 Alternatives Description: Construct approximately 2,200 feet of Floodwall to remove 8 structures from 100-year backwater of Des Plaines River.

Concept Level Cost: \$10,368,339
 Benefits: \$2,438,071
 B/C Ratio: 0.2

Legend	
	100-Year Storm Event Flood Inundation Without Project
	100-Year Storm Event Flood Inundation With Project
	Reservoir
	Levee/Floodwall
	Culvert/Bridge Modification
	Channel Improvements
	Road Improvement
	Approximate Creek Channel Location
	Municipal Boundary
	Watershed Boundary
	Modeled Problem Areas
	Regional Problem Areas



CLIENT:
METROPOLITAN WATER RECLAMATION DISTRICT OF GREATER CHICAGO

TITLE:
**LOWER DES PLAINES RIVER DETAILED WATERSHED PLAN
 MCDONALD CREEK WATERSHED
 RECOMMENDED ALTERNATIVE MDCR-3**

PROJ. NO. 08-0043
 DATE: 03-23-2010
 SHEET 1 OF 1
 DRAWING NO.

CB CHRISTOPHER B. BURKE ENGINEERING, LTD.
 9575 W. Higgins Road, Suite 600 · Rosemont, Illinois 60018 · (847) 823-0500

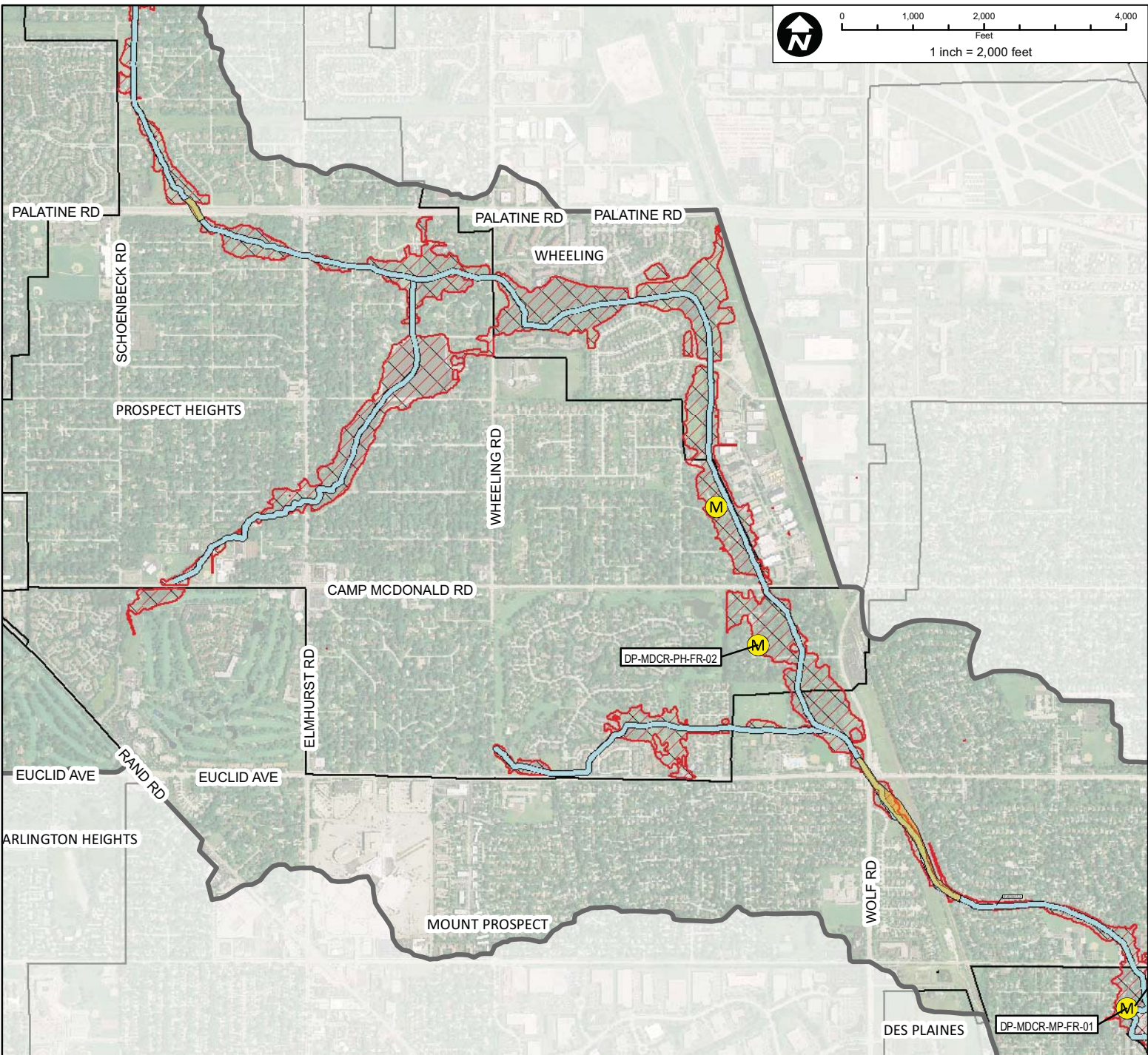
DSGN.	DRW	4-10	SCALE	
DWN.			GIS USER	DRW
CHKD.			PLOT DATE	
FILE:				

FIGURE 3.13.9

Map Document: (Z:\MWR\RDCC\08-0043 Phase B\GIS\Exhibits\Meeting Maps\Feehanville Willow McDonald Creeks\McDonald Creek Detailed Sheets.mxd) 1/12/2010 9:55:55 AM



0 1,000 2,000 4,000
Feet
1 inch = 2,000 feet

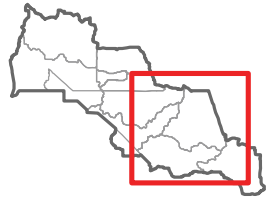


Subwatershed: McDonald Creek
Alternative: MDCR-4
Alternatives Description:

Sediment removal on McDonald Creek at Palatine Road culvert and between Euclid Avenue and Kensington Road.

Concept Level Cost: \$89,757
Benefits: \$880
B/C Ratio: 0.01

Legend	
	100-Year Storm Event Flood Inundation Without Project
	Reservoir
	Levee/Floodwall
	100-Year Storm Event Flood Inundation With Project
	Culvert/Bridge Modification
	Channel Improvements
	Road Improvement
	Approximate Creek Channel Location
	Municipal Boundary
	Watershed Boundary
	Local Problem Areas
	Modeled Problem Areas
	Regional Problem Areas



CLIENT:
METROPOLITAN WATER RECLAMATION DISTRICT OF GREATER CHICAGO

TITLE:
**LOWER DES PLAINES RIVER DETAILED WATERSHED PLAN
MCDONALD CREEK WATERSHED
PROPOSED ALTERNATIVE MDCR-4**

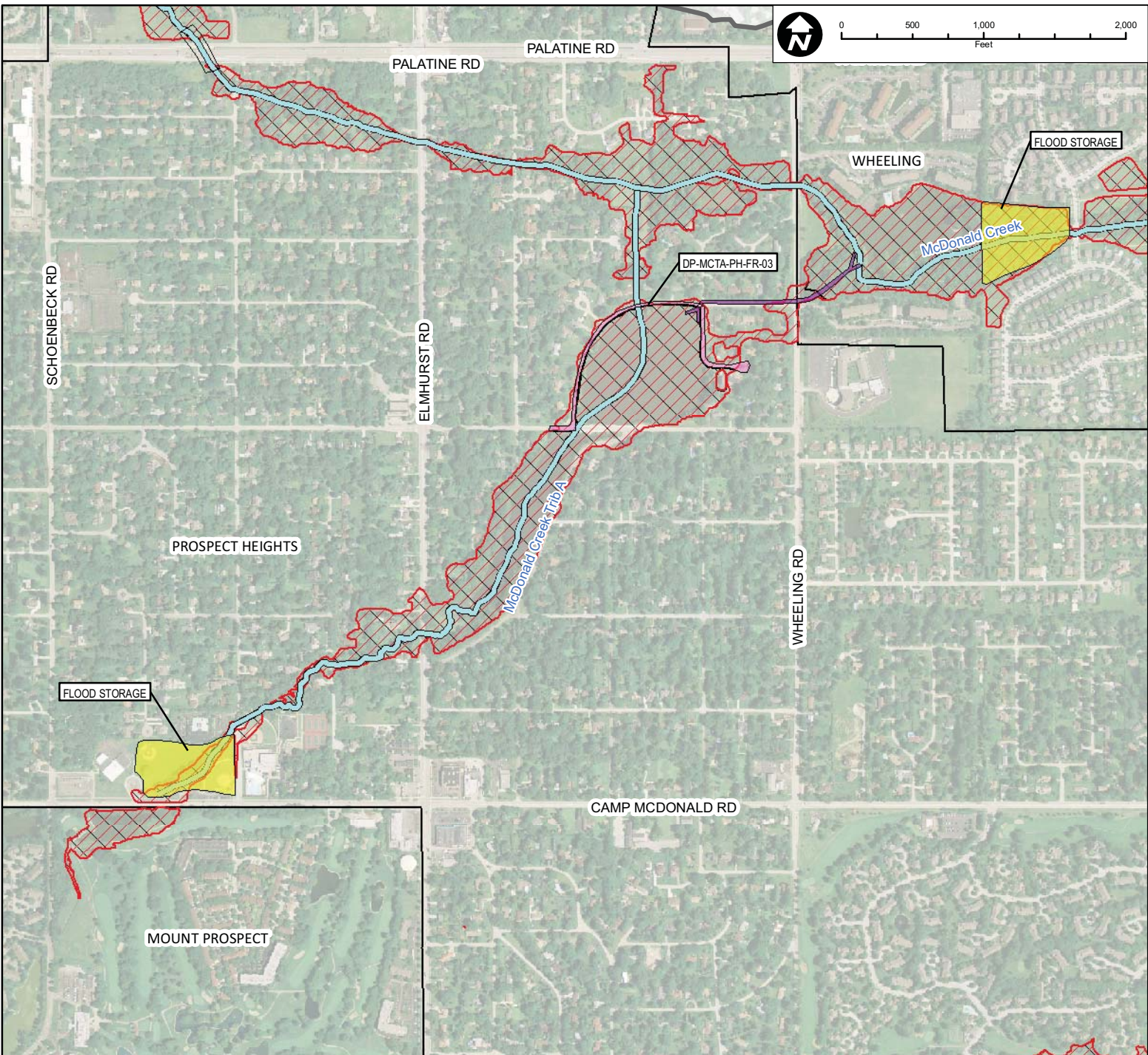
PROJ. NO. 08-0043
DATE: 03-23-2010
SHEET 1 OF 1
DRAWING NO.

CHRISTOPHER B. BURKE ENGINEERING, LTD.
9575 W. Higgins Road, Suite 600 · Rosemont, Illinois 60018 · (847) 823-0500

DSGN.	DRW	4-10	SCALE	1" = 2,400'
DWN.			GIS USER	DRW
CHKD.			PLOT DATE	
FILE:				

FIGURE 3.13.10

Map Document: (Z:\MWR\RDCC\08-0043 Phase B\GIS\Exhibits\Meeting Maps\Freshville Willow McDonald Creeks\McDonald Creek Detailed Sheets.mxd) 8/11/2010 - 1:52:11 PM



Subwatershed: McDonald Creek

Alternative: MCTA-1

Alternatives Description: Provide 20 acre-feet of flood storage on park (Prospect Heights). Culvert Improvements at Hillcrest Drive. Provide 20 acre-feet of storage on non-developed parcels in Wheeling. Road Improvements at Hillcrest Drive/Owen Court.

Concept Level Cost: \$9,430,341

Benefits: \$314,091

B/C Ratio: 0.03

Legend

- 100-Year Storm Event Flood Inundation Without Project
- Reservoir
- Levee/Floodwall

- 100-Year Storm Event Flood Inundation With Project
- Culvert/Bridge Modification
- Channel Improvements
- Road Improvement

- Approximate Creek Channel Location
- Municipal Boundary
- Watershed Boundary

- Problem Areas**
- Local
 - Modeled
 - Regional



CLIENT: **METROPOLITAN WATER RECLAMATION DISTRICT OF GREATER CHICAGO**

TITLE: **LOWER DES PLAINES RIVER DETAILED WATERSHED PLAN MCDONALD CREEK WATERSHED RECOMMENDED ALTERNATIVE MCTA-1**

PROJ. NO. 08-0043
 DATE: 03-23-2010
 SHEET 1 OF 1
 DRAWING NO.

CHRISTOPHER B. BURKE ENGINEERING, LTD.
 9575 W. Higgins Road, Suite 600 · Rosemont, Illinois 60018 · (847) 823-0500

DSGN.	DRW	4-10	SCALE	
DWN.			GIS USER	DRW
CHKD.			PLOT DATE	
FILE:				

FIGURE 3.13.11

Map Document: (Z:\MWR\DRG\08-0043 Phase BIG\IS\Exhibits\Meeting Maps\Feehanville Willow McDonald Creeks\McDonald Creek Detailed Sheets.mxd) 1/19/2010 10:06:25 AM

