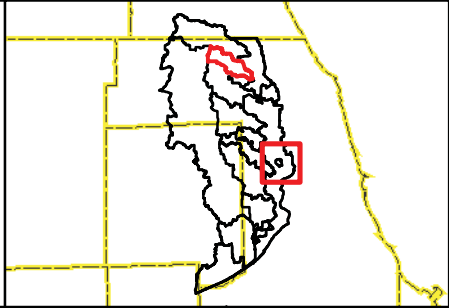


- 100-Year Storm Event Flood Inundation Without Project
- Reservoir
- Channel Improvements
- Culvert/Bridge Modification
- Levee/Floodwall

- Approximate Creek Channel Location
- Municipal Boundary
- Watershed Boundary

- Problem Areas**
- Modeled
 - Regional



CLIENT:
METROPOLITAN WATER RECLAMATION DISTRICT OF GREATER CHICAGO

TITLE:
**LOWER DES PLAINES RIVER DETAILED WATERSHED PLAN
 GOLF COURSE TRIBUTARY WATERSHED TRIBUTARY OVERVIEW**

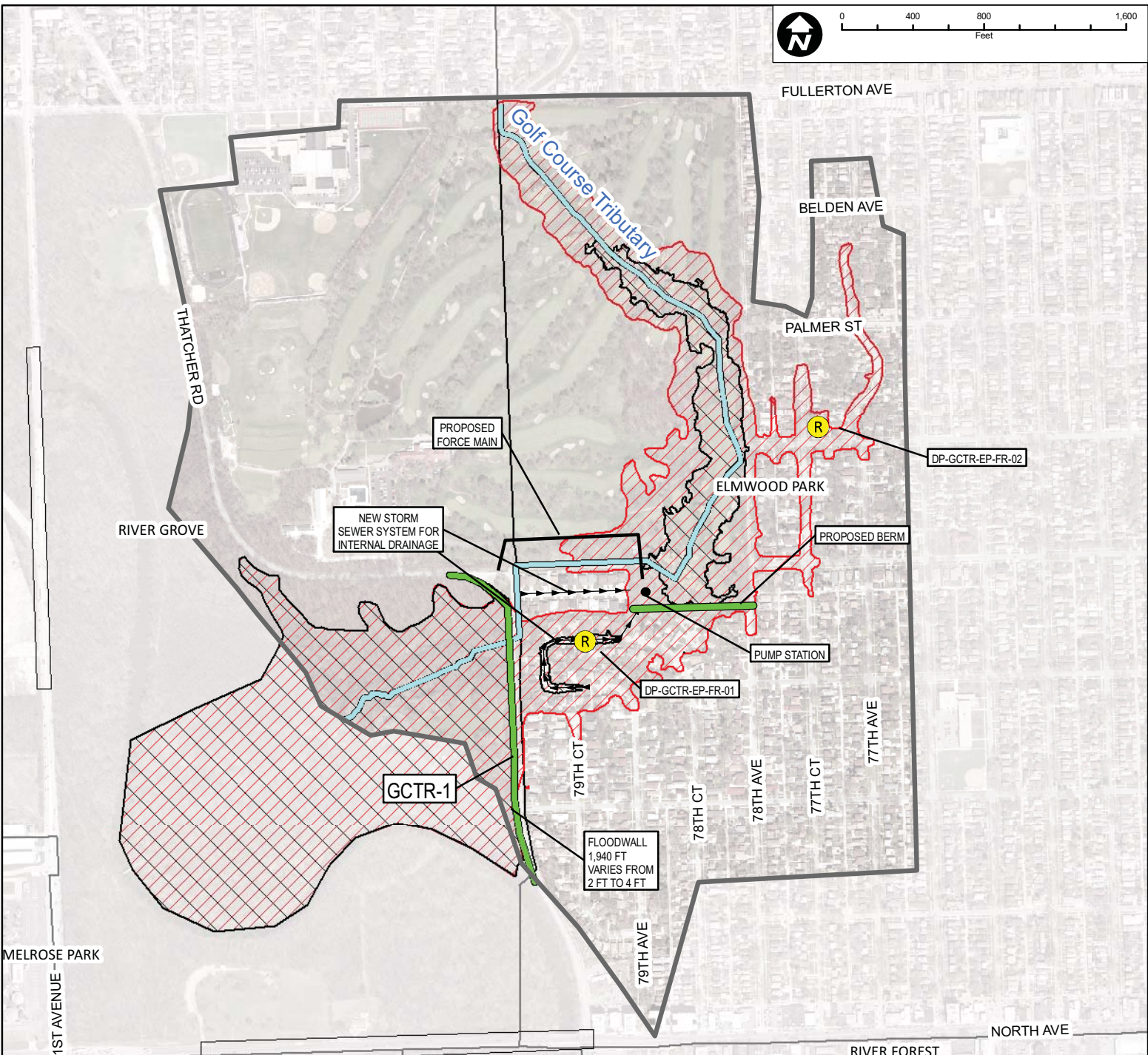
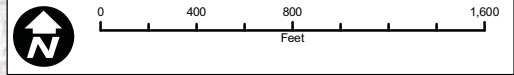
PROJ. NO. 08-0043
 DATE: 05-10-2010
 SHEET 1 OF 1
 DRAWING NO.

CHRISTOPHER B. BURKE ENGINEERING, LTD.
 9575 W. Higgins Road, Suite 600 · Rosemont, Illinois 60018 · (847) 823-0500

| | | | | |
|-------|-----|------|-----------|-----|
| DSGN. | DRW | 4-10 | SCALE: | |
| DWN. | | | GIS USER | DRW |
| CHKD. | | | PLOT DATE | |
| FILE: | | | | |

FIGURE 3.12.1

Map Document: Z:\MWRDC\08-0043 Phase B\GIS\Exhibits\Meeting Maps\Crystal Silver Golf\Golf Overall.mxd 11/19/2010 -- 8:47:44 AM



Subwatershed: Golf Course Tributary
 Alternative: GCTR-1
 Alternatives Description: 1,940 ft long floodwall.
 300 cfs pump will address interior drainage.
 new storm sewer system on Courtland Drive and Country Club Lane to convey flow to pump.
 Concept Level Cost: \$15,486,491
 Benefits: \$5,170,087
 B/C Ratio: 0.33

| Legend | | Problem Areas | |
|--------|---|---------------|-----------------------------|
| | 100-Year Storm Event Flood Inundation Without Project | | Culvert/Bridge Modification |
| | Reservoir | | Channel Improvements |
| | 100-Year Storm Event Flood Inundation With Project | | Levee/Floodwall |
| | Approximate Creek Channel Location | | Modeled |
| | Municipal Boundary | | Regional |
| | Watershed Boundary | | |



CLIENT:
METROPOLITAN WATER RECLAMATION DISTRICT OF GREATER CHICAGO

TITLE:
**LOWER DES PLAINES RIVER DETAILED WATERSHED PLAN
 GOLF COURSE TRIBUTARY WATERSHED RECOMMENDED ALTERNATIVE GCTR-1**

PROJ. NO. 08-0043
 DATE: 05-07-2010
 SHEET 1 OF 1
 DRAWING NO.

CB CHRISTOPHER B. BURKE ENGINEERING, LTD.
 9575 W. Higgins Road, Suite 600 · Rosemont, Illinois 60018 · (847) 823-0500

| | | | | |
|-------|-----|------|-----------|-----|
| DSGN. | DRW | 4-10 | SCALE | |
| DWN. | | | GIS USER | DRW |
| CHKD. | | | PLOT DATE | |
| FILE: | | | | |

FIGURE 3.12.2

Map Document: (Z:\MWRD\G08-0043 Phase B\GIS\Exhibits\Meeting Maps\Crystal Silver Golf\Golf Detailed Sheets.mxd) 5/7/2010 9:55:43 AM