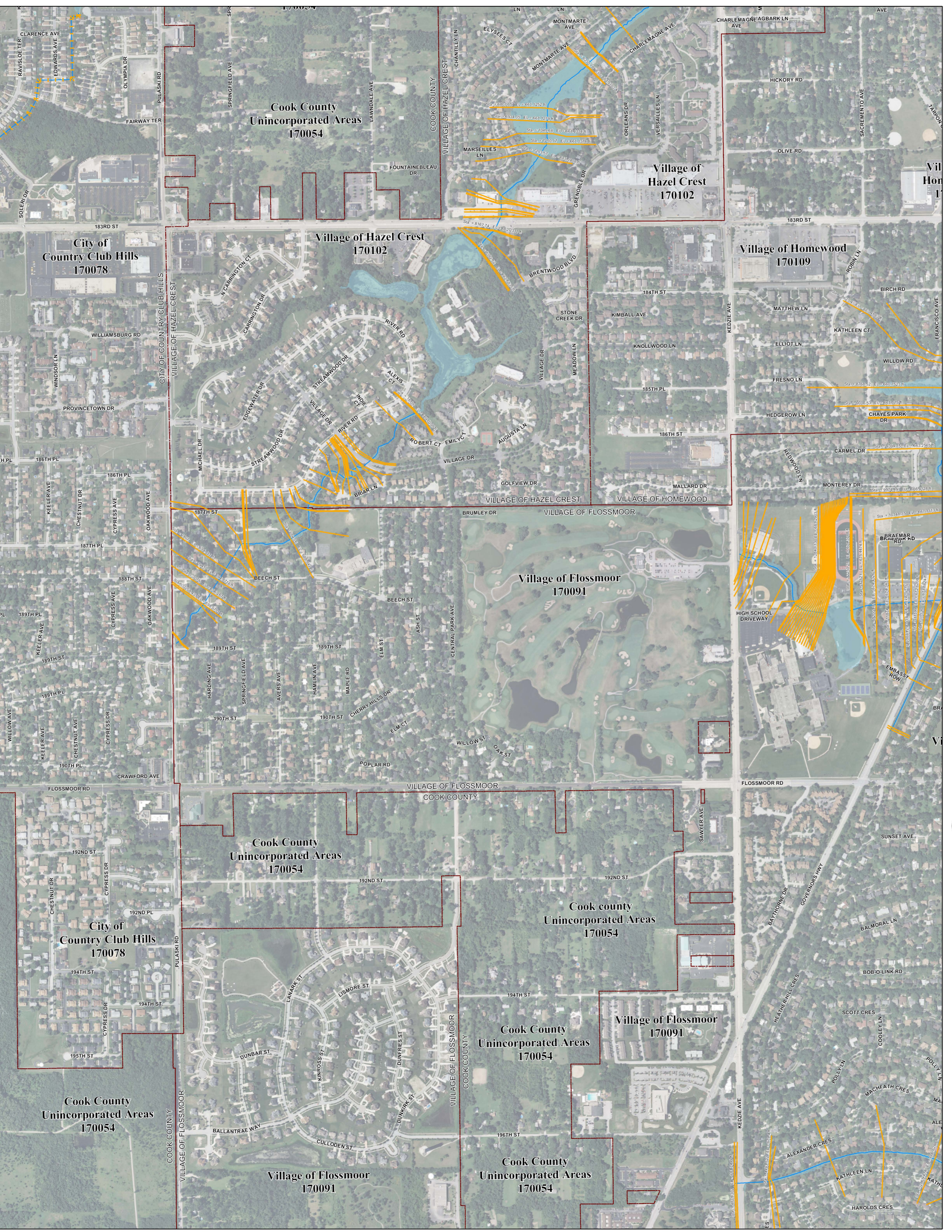
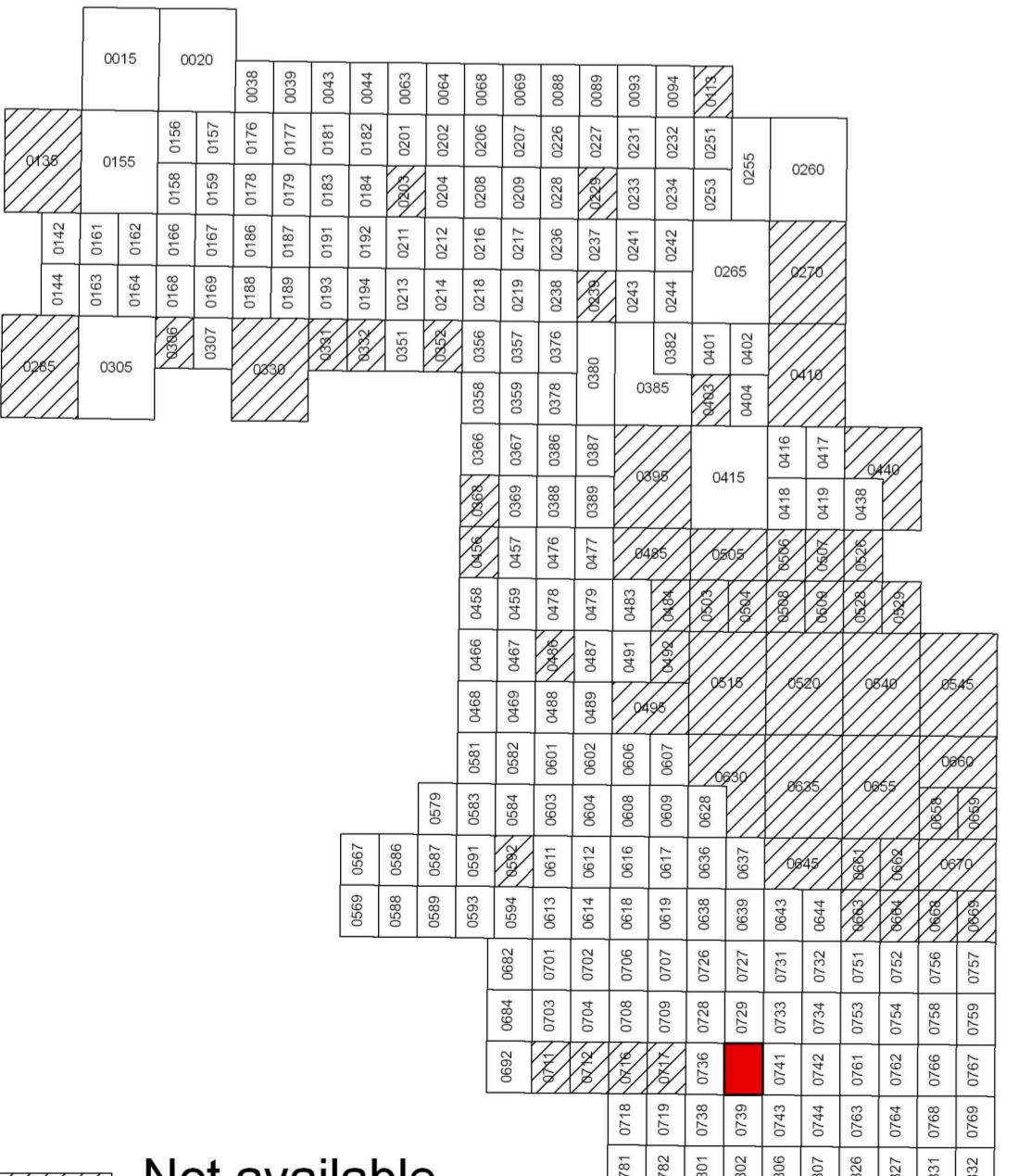


Municipality Index

- Alsip: 0609, 0617, 0628, 0636, 0637, 0638, 0639
- Arlington Heights: 0044, 0063, 0064, 0162, 0184, 0192, 0201, 0202, 0203, 0204, 0211, 0212
- Barrington Hills: 0015, 0020, 0155, 0156, 0157
- Barrington: 0020, 0038
- Bartlett: 0144, 0163, 0164, 0168, 0285, 0305, 0306
- Bedford Park: 0487, 0488, 0489, 0495, 0515, 0606
- Bellwood: 0369, 0388, 0457, 0476
- Beneseville: 0338, 0339
- Berkeley: 0368, 0369, 0456
- Berwyn: 0483, 0484, 0485
- Blue Island: 0637, 0639, 0643, 0644, 0645
- Buffalo Grove: 0063, 0064
- Bridgeview: 0460, 0602, 0606, 0609
- Broadview: 0476, 0477
- Brookfield: 0478, 0479, 0486, 0487
- Buffalo Grove: 0063, 0064
- Burbank: 0495, 0515, 0606, 0607, 0630
- Burnham: 0664, 0668, 0669
- Burr Ridge: 0466, 0468, 0469, 0681, 0682
- Calumet City: 0664, 0668, 0669, 0752, 0754, 0756, 0757, 0758, 0759
- Calumet Park: 0643, 0644, 0645
- Chicago Heights: 0742, 0743, 0744, 0763, 0806, 0807, 0826
- Chicago Ridge: 0606, 0607, 0608, 0609
- Cicero: 0214, 0218, 0219, 0230, 0243, 0244, 0265, 0270, 0352, 0356, 0357, 0358, 0359, 0376, 0378, 0380, 0382, 0385, 0386, 0387, 0389, 0401, 0402, 0403, 0404, 0410, 0415, 0416, 0417, 0418, 0419, 0438, 0440, 0484, 0485, 0491, 0492, 0495, 0503, 0504, 0505, 0506, 0507, 0538, 0539, 0540, 0545, 0548, 0549, 0550, 0551, 0552, 0553, 0630, 0635, 0636, 0637, 0645, 0655, 0658, 0659, 0660, 0661, 0662, 0663, 0664, 0668, 0669, 0670
- Cicero: 0484, 0485, 0503, 0505
- Country Club Hills: 0728, 0729, 0736, 0737
- Countryside: 0467, 0469, 0486, 0488
- Crestwood: 0617, 0619, 0636, 0638, 0639
- Deer Park: 0038, 0039, 0043
- Deerfield: 0069, 0088, 0089
- Des Plaines: 0208, 0209, 0212, 0214, 0216, 0217, 0218, 0219, 0236, 0238, 0357, 0376
- Dilmor: 0643, 0644, 0731
- Dolton: 0644, 0663, 0664, 0732, 0751, 0752
- East Dundee: 0155
- East Hazel Crest: 0733, 0734
- Egan: 0135, 0142, 0144, 0155, 0161, 0163, 0305
- Elk Grove Village: 0193, 0194, 0211, 0213, 0214, 0218, 0331, 0332, 0351, 0352
- Elmhurst: 0456
- Elmwood Park: 0380, 0387, 0395
- Evanston: 0253, 0255, 0260, 0265, 0270
- Evergreen Park: 0628, 0630, 0635
- Flossmoor: 0737, 0739, 0741, 0742, 0743, 0744
- Ford Heights: 0763, 0764, 0768, 0826, 0827
- Forest Park: 0389, 0395, 0477, 0485
- Forest View: 0484, 0491, 0492
- Frankfort: 0781, 0782
- Franklin Park: 0358, 0359, 0366, 0367, 0378, 0386
- Glencoe: 0093, 0094, 0113, 0231, 0232, 0251
- Glennview: 0207, 0209, 0226, 0227, 0228, 0229, 0231, 0233, 0234, 0236, 0237, 0241
- Glenwood: 0742, 0761, 0762, 0763, 0764
- Golf: 0233, 0234, 0241, 0242
- Hanover Park: 0168, 0169, 0306, 0307
- Harvey: 0643, 0644, 0731, 0732, 0734, 0751
- Hawood Heights: 0380, 0385
- Hazel Crest: 0729, 0733, 0734, 0737
- Hickory Hills: 0601, 0602, 0603, 0604, 0606, 0608
- Hillside: 0368, 0369, 0456, 0457
- Hinsdale: 0458, 0466, 0467, 0468, 0469
- Hodgkins: 0469, 0469, 0487, 0488, 0489, 0522, 0601
- Hoffman Estates: 0155, 0157, 0158, 0159, 0161, 0162, 0166, 0167, 0176, 0178, 0179, 0186, 0187, 0188, 0189, 0191
- Hometown: 0630
- Homewood: 0729, 0733, 0734, 0737, 0741, 0742
- Indian Head Park: 0468, 0469
- Inverness: 0020, 0038, 0039, 0157, 0176, 0177, 0178, 0179
- Justice: 0488, 0489, 0601, 0602
- Kennilworth: 0253, 0255
- La Grange Park: 0459, 0476
- La Grange: 0459, 0467
- La Grange Park: 0478
- La Grange: 0478, 0486
- Lansing: 0754, 0756, 0758, 0759, 0762, 0766, 0767
- Lemont: 0567, 0569, 0579, 0583, 0586, 0587, 0588, 0589, 0591, 0593
- Lincolnwood: 0244, 0265, 0382, 0401, 0402
- Lyndon: 0762, 0764, 0766, 0767, 0768, 0769, 0831, 0832
- Lyons: 0479, 0483, 0487, 0491
- Markham: 0727, 0727, 0729, 0731, 0732, 0733, 0734
- Matteson: 0718, 0719, 0738, 0739, 0781, 0782, 0801, 0802
- Maywood: 0388, 0389, 0476, 0477
- Mc Cook: 0486, 0487, 0491
- Melrose Park: 0367, 0369, 0386, 0387, 0388, 0389
- Merrionette Park: 0630, 0637
- Midlothian: 0619, 0638, 0639, 0707, 0726, 0727
- Morton Grove: 0237, 0241, 0242, 0243, 0244
- Mount Prospect: 0202, 0203, 0204, 0206, 0207, 0208, 0209, 0211, 0212, 0214, 0216
- Niles: 0236, 0237, 0238, 0239, 0241, 0243, 0244
- Normal: 0376, 0376, 0380, 0385
- North Riverside: 0476, 0477, 0479, 0483, 0485
- Northbrook: 0069, 0088, 0089, 0093, 0207, 0226, 0227, 0231, 0232
- Northfield: 0231, 0232, 0233, 0234
- Northlake: 0366, 0367, 0368, 0369
- Oak Forest: 0618, 0619, 0706, 0707, 0709, 0726, 0727, 0728, 0729
- Oak Lawn: 0606, 0607, 0608, 0609, 0617, 0628, 0630
- Oak Park: 0395, 0495
- Olympia Fields: 0739, 0743
- Orland Hills: 0701, 0702, 0703, 0704
- Orland Park: 0593, 0594, 0613, 0614, 0618, 0682, 0684, 0692, 0701, 0702, 0703, 0704, 0706, 0711
- Palatine: 0038, 0039, 0043, 0044, 0177, 0179, 0181, 0182, 0183
- Palos Heights: 0612, 0614, 0616, 0617, 0618, 0619
- Palos Hills: 0603, 0604, 0608, 0611, 0612, 0616
- Palos Park: 0592, 0594, 0611, 0612, 0613, 0614, 0616
- Park Forest: 0739, 0743, 0802, 0806, 0807
- Park Ridge: 0236, 0237, 0238, 0239, 0376, 0380
- Phoenix: 0732, 0751
- Posen: 0639, 0643, 0727, 0731
- Prospect Heights: 0201, 0202, 0206, 0207, 0208
- Richton Park: 0781, 0782, 0801, 0802
- River Forest: 0307, 0309, 0395
- River Grove: 0380, 0386, 0387
- Riversdale: 0643, 0644, 0645, 0661, 0663
- Riverside: 0479, 0483
- Robbins: 0638, 0639
- Rolling Meadows: 0179, 0181, 0182, 0183, 0184, 0191, 0192, 0211
- Roselle: 0193, 0330, 0331
- Rosemont: 0219, 0357, 0376
- Sauk Village: 0754, 0759, 0826, 0827, 0831
- Schaumburg: 0167, 0169, 0189, 0194, 0307, 0330
- Schiller Park: 0357, 0359, 0376, 0378
- Skokie: 0234, 0242, 0244, 0253, 0265
- South Barrington: 0155, 0156, 0157, 0158, 0159, 0176, 0178
- South Chicago Heights: 0807, 0826
- South Holland: 0732, 0734, 0751, 0752, 0753, 0754
- Steger: 0807, 0826, 0827
- Stickney: 0483, 0484, 0491, 0503
- Stone Park: 0367, 0369, 0386, 0388
- Streamwood: 0162, 0163, 0164, 0166, 0167, 0168, 0169, 0306
- Summit: 0487, 0488, 0491, 0495
- Thornton: 0734, 0742, 0753, 0761
- Tinley Park: 0702, 0703, 0704, 0706, 0707, 0708, 0709, 0711, 0712, 0716, 0717, 0719
- University Park: 0801
- Westchester: 0456, 0457, 0458, 0459, 0476
- Western Springs: 0558, 0459, 0460, 0467, 0468, 0469
- Wheeling: 0084, 0086, 0089, 0202, 0206, 0207
- Willow Springs: 0469, 0488, 0581, 0582, 0583, 0584, 0601
- Wilmette: 0234, 0253, 0255, 0260
- Willmetts: 0113, 0232, 0251, 0253, 0255
- Worth: 0608, 0609, 0616, 0617

Panel Index



NOTES TO USER:

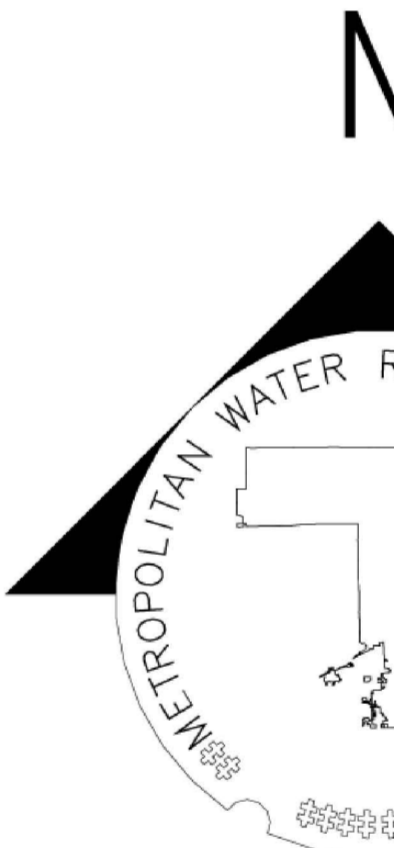
The inundation areas and water surface elevations shown on this map were developed as part of the Metropolitan Water Reclamation District of Greater Chicago's (MWRD) Stormwater Management Program. Specific details regarding the development of the new models used to generate the maps are described in MWRD's Detailed Watershed Plans, which are available for download at www.mwrdd.org. To access, click on "Services & Facilities" in the top navigation bar, click on "Stormwater Management", and then click on "Stormwater Annual Reports and Publications" on the left navigation bar of the Stormwater Management webpage.

This map does not delineate floodways. The information contained on this map is in addition to and does not substitute for the relevant Federal Emergency Management Agency's (FEMA) Flood Insurance Study (FIS) and associated Flood Insurance Rate Map (FIRM).

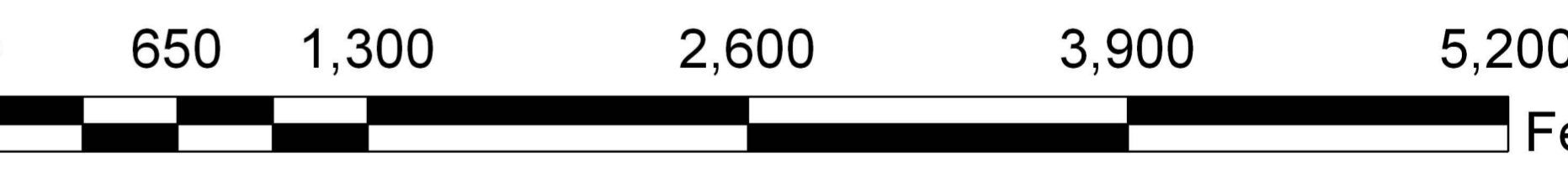
Elevations stated on this map are consistent with the North American Vertical Datum (NAVD) 1988. Flood elevations must be compared to ground structures referenced to the same datum. Hydraulic profiles of modeled waterways are available for download at www.mwrdd.org. To access, click on "Services & Facilities" in the top navigation bar, click on "Stormwater Management", and then click on "Inundation Maps & Profiles" on the left navigation bar of the Stormwater Management webpage.

The corporate limits shown on this map are based on the best information available at the time of study.

If you have questions on this map, please contact the MWRD's Engineering Department-Stormwater Management Section, at 312-751-5600, or via e-mail Stormwater@mwrdd.org.



- DWP 100-year (1% Chance) Inundation Area
- River/Stream
- Municipal Boundary
- Cross Section (By Watershed)**
- Calumet Sag Channel DWP
- DP
- Little Calumet River DWP
- NB
- PC
- Upper Salt Creek DWP



Protecting Our Water Environment



Metropolitan Water Reclamation District of Greater Chicago

Cook County Inundation Map

Panel 0737

The area depicted in this map corresponds to FEMA's DFIRM Panel:
17031C0737J