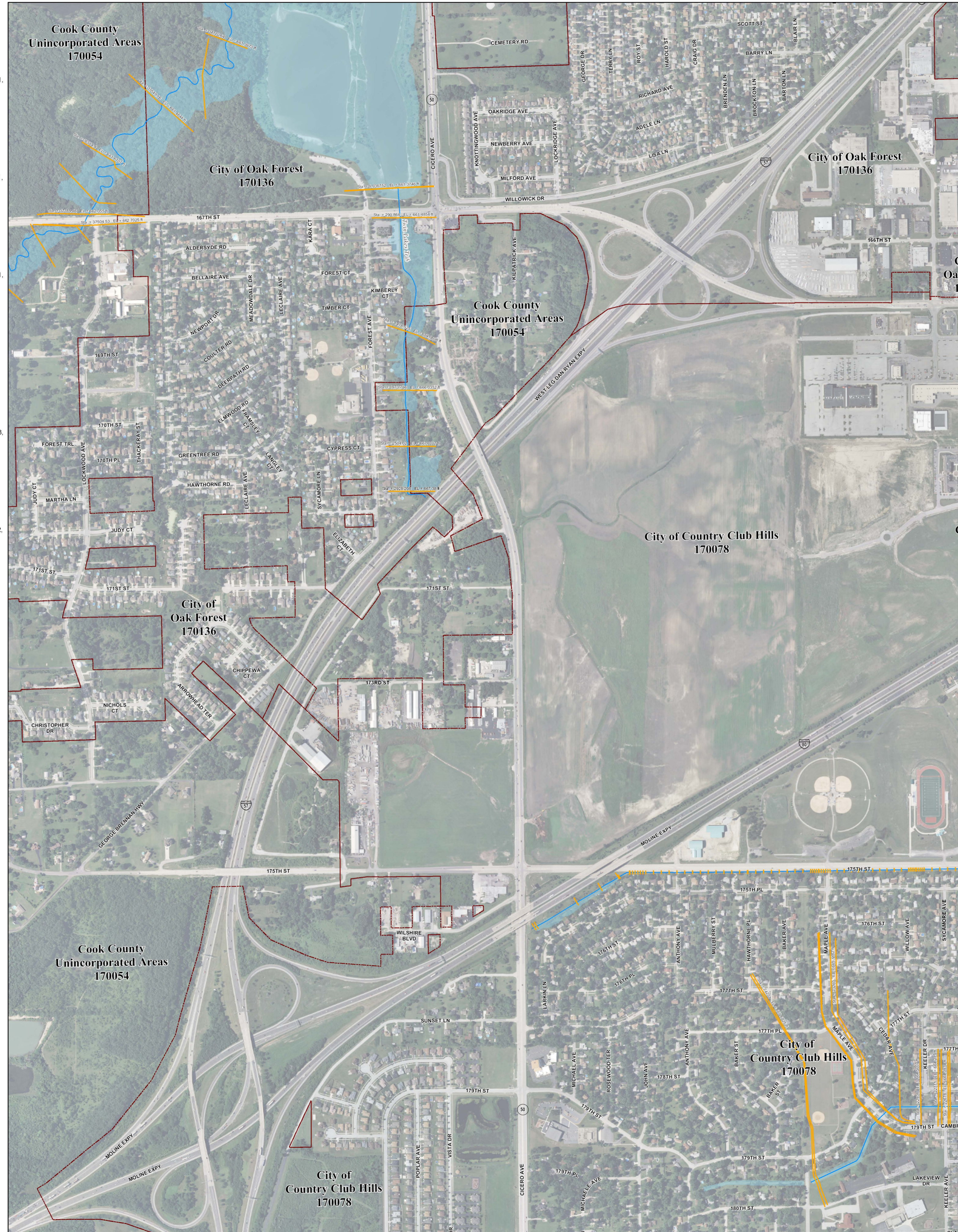
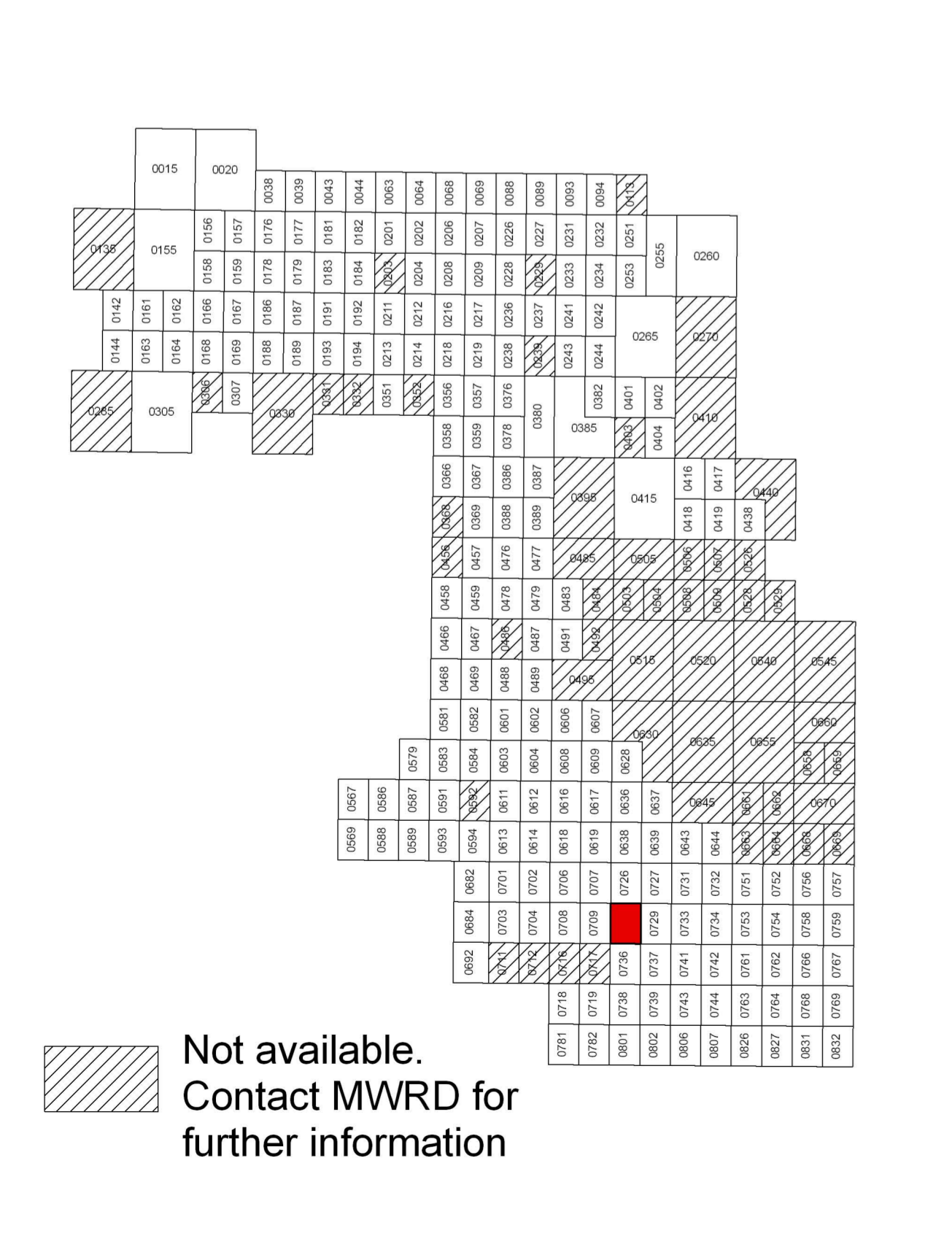


# Municipality Index

- Akita: 0609, 0617, 0628, 0636, 0637, 0638, 0639
- Arlington Heights: 0044, 0063, 0064, 0162, 0184, 0192, 0201, 0202, 0203, 0204, 0211, 0212
- Barrington Hills: 0015, 0020, 0155, 0156, 0157
- Barrington: 0020, 0038
- Bartlett: 0144, 0163, 0164, 0168, 0285, 0305, 0306
- Bedford Park: 0487, 0488, 0489, 0495, 0515, 0606
- Bellwood: 0369, 0388, 0457, 0476
- Bensenville: 0335, 0338
- Berkeley: 0368, 0369, 0456
- Berwyn: 0483, 0484, 0485
- Blue Island: 0037, 0639, 0643, 0644, 0645
- Buffalo Grove: 0063, 0064
- Bridgeview: 0480, 0485, 0602, 0606, 0608
- Broadview: 0476, 0477
- Brookfield: 0478, 0479, 0486, 0487
- Brook Park: 0631, 0632
- Burbank: 0495, 0515, 0606, 0607, 0630
- Burnham: 0664, 0668, 0669
- Burr Ridge: 0466, 0468, 0469, 0681, 0582
- Calumet City: 0664, 0668, 0669, 0752, 0754, 0756, 0757, 0758, 0759
- Calumet Park: 0643, 0644, 0645
- Chicago Heights: 0742, 0743, 0744, 0744, 0763, 0806, 0807, 0826
- Chicago Ridge: 0606, 0607, 0608, 0609
- Chicago: 0214, 0218, 0219, 0239, 0243, 0244, 0265, 0270, 0352, 0356, 0357, 0358, 0359, 0376, 0378, 0380, 0382, 0385, 0386, 0387, 0395, 0401, 0402, 0403, 0404, 0410, 0415, 0416, 0417, 0418, 0419, 0438, 0440, 0484, 0485, 0491, 0492, 0495, 0503, 0504, 0505, 0506, 0507, 0508, 0509, 0510, 0519, 0520, 0528, 0529, 0540, 0545, 0528, 0630, 0635, 0636, 0637, 0645, 0655, 0658, 0659, 0660, 0661, 0662, 0663, 0664, 0668, 0669, 0670
- Clarendon Hills: 0484, 0485, 0503, 0505
- Country Club Hills: 0728, 0729, 0736, 0737
- Countrydays: 0467, 0469, 0486, 0488
- Crestwood: 0617, 0619, 0636, 0638, 0639
- Deerfield: 0069, 0088, 0089
- Des Plaines: 0208, 0209, 0212, 0214, 0216, 0217, 0218, 0219, 0236, 0238, 0357, 0376
- Diamond: 0643, 0644, 0731
- Dolton: 0644, 0663, 0664, 0732, 0751, 0752
- East Dundee: 0155
- East Hazel Crest: 0737, 0734
- Elgin: 0135, 0142, 0144, 0155, 0161, 0163, 0305
- Elk Grove Village: 0193, 0194, 0211, 0213, 0214, 0218, 0331, 0332, 0351, 0352
- Elmhurst: 0456
- Elmwood Park: 0380, 0387, 0395
- Evanson: 0253, 0255, 0260, 0265, 0270
- Evergreen Park: 0628, 0630, 0635
- Flossmoor: 0737, 0739, 0741, 0742, 0743, 0744
- Ford Heights: 0763, 0764, 0768, 0826, 0827
- Forest Park: 0389, 0395, 0477, 0485
- Forest View: 0484, 0491, 0492
- Frankfort: 0781, 0782
- Franklin Park: 0358, 0359, 0366, 0367, 0378, 0386
- Glencoe: 0093, 0094, 0113, 0231, 0232, 0251
- Glenview: 0207, 0209, 0226, 0227, 0228, 0229, 0231, 0233, 0234, 0236, 0237, 0241
- Glenwood: 0742, 0761, 0762, 0763, 0764
- Golf: 0233, 0234, 0241, 0242
- Hanover Park: 0168, 0169, 0306, 0307
- Harvey: 0643, 0644, 0731, 0732, 0734, 0751
- Harwood Heights: 0380, 0385
- Hazel Crest: 0729, 0733, 0734, 0737
- Hickory Hills: 0601, 0602, 0603, 0604, 0606, 0608
- Hillside: 0368, 0369, 0456, 0457
- Hinsdale: 0458, 0466, 0467, 0468, 0469
- Hodgkins: 0469, 0480, 0487, 0488, 0489, 0582, 0601
- Hoffman Estates: 0155, 0157, 0158, 0159, 0161, 0162, 0166, 0167, 0176, 0178, 0186, 0187, 0188, 0189, 0191
- Hometown: 0630
- Hornwood: 0729, 0733, 0734, 0737, 0741, 0742
- Indian Head Park: 0468, 0469
- Inverness: 0020, 0038, 0039, 0157, 0176, 0177, 0178, 0179
- Justice: 0488, 0489, 0601, 0602
- Kenilworth: 0253, 0255
- La Grange Park: 0459, 0476
- La Grange: 0459, 0467
- La Grange Park: 0478
- La Grange: 0478, 0486
- Lansing: 0754, 0756, 0758, 0759, 0762, 0766, 0767
- Lenont: 0567, 0569, 0579, 0583, 0586, 0587, 0588, 0589, 0591, 0593
- Lincolnwood: 0244, 0265, 0382, 0401, 0402
- Lynwood: 0762, 0764, 0766, 0767, 0768, 0769, 0831, 0832
- Lyons: 0479, 0483, 0487, 0491
- Markham: 0726, 0727, 0729, 0731, 0732, 0733, 0734
- Matteson: 0718, 0719, 0738, 0739, 0781, 0782, 0801, 0802
- Maywood: 0388, 0389, 0476, 0477
- McCook: 0486, 0487, 0491
- Melrose Park: 0367, 0369, 0386, 0387, 0388, 0389
- Merrionette Park: 0630, 0637
- Midolothian: 0619, 0638, 0639, 0707, 0726, 0727
- Morton Grove: 0237, 0241, 0242, 0243, 0244
- Mount Prospect: 0202, 0203, 0204, 0206, 0207, 0208, 0209, 0211, 0212, 0214, 0216
- Niles: 0236, 0237, 0238, 0239, 0241, 0243, 0244
- Northridge: 0376, 0378, 0390, 0395
- North Riverside: 0476, 0477, 0479, 0483, 0485
- Northbrook: 0069, 0088, 0089, 0093, 0207, 0226, 0227, 0231, 0232, 0233
- Northfield: 0231, 0232, 0233, 0234
- Northlake: 0366, 0367, 0368, 0369
- Oak Forest: 0618, 0619, 0706, 0707, 0709, 0726, 0727, 0728, 0729
- Oak Lawn: 0606, 0607, 0608, 0609, 0617, 0628, 0630
- Oak Park: 0395, 0485
- Olympia Fields: 0739, 0743
- Orland Hills: 0701, 0702, 0703, 0704
- Orland Park: 0593, 0594, 0613, 0614, 0618, 0682, 0684, 0692, 0701, 0702, 0703, 0704, 0706, 0711
- Palatine: 0038, 0039, 0043, 0044, 0177, 0179, 0181, 0182, 0183
- Palos Heights: 0612, 0614, 0616, 0617, 0618, 0619
- Palos Hills: 0603, 0604, 0608, 0611, 0612, 0616
- Palos Park: 0592, 0594, 0611, 0612, 0613, 0614, 0616
- Park Forest: 0739, 0743, 0802, 0806, 0807
- Park Ridge: 0236, 0237, 0238, 0239, 0378, 0380
- Phoenix: 0732, 0751
- Posen: 0639, 0643, 0727, 0731
- Prospect Heights: 0201, 0202, 0206, 0207, 0208
- Richton Park: 0781, 0782, 0801, 0802
- River Forest: 0387, 0389, 0395
- River Grove: 0380, 0388, 0387
- Riverdale: 0643, 0644, 0645, 0661, 0663
- Riverside: 0479, 0483
- Robbins: 0638, 0639
- Rolling Meadows: 0179, 0181, 0182, 0183, 0184, 0191, 0192, 0211
- Roselle: 0193, 0330, 0331
- Rosemont: 0219, 0357, 0376
- Sauk Village: 0754, 0759, 0826, 0827, 0831
- Schaumburg: 0167, 0169, 0179, 0183, 0184, 0186, 0187, 0188, 0189, 0191, 0192, 0193, 0194, 0307, 0330
- Schiller Park: 0357, 0359, 0376, 0378
- Skokie: 0234, 0242, 0244, 0253, 0265
- South Barrington: 0155, 0156, 0157, 0158, 0159, 0176, 0178
- South Chicago Heights: 0807, 0826
- South Holland: 0732, 0734, 0751, 0752, 0753, 0754
- Steger: 0807, 0826, 0827
- Stickney: 0483, 0484, 0491, 0503
- Stone Park: 0367, 0369, 0386, 0388
- Streamwood: 0162, 0163, 0164, 0166, 0167, 0168, 0169, 0306
- Summit: 0487, 0489, 0491, 0495
- Thornton: 0734, 0742, 0753, 0761
- Tinley Park: 0702, 0703, 0704, 0706, 0707, 0708, 0709, 0711, 0712, 0716, 0717, 0719
- University Park: 0801
- Westchester: 0456, 0457, 0458, 0459, 0476
- Western Springs: 0458, 0459, 0460, 0467, 0468, 0469
- Wheeling: 0064, 0068, 0069, 0202, 0206, 0207
- Willow Springs: 0469, 0488, 0581, 0582, 0583, 0584, 0601
- Wilmette: 0234, 0253, 0255, 0260
- Wilmink: 0115, 0232, 0251, 0253, 0255
- Worth: 0608, 0609, 0616, 0617



# Panel Index



# NOTES TO USER:

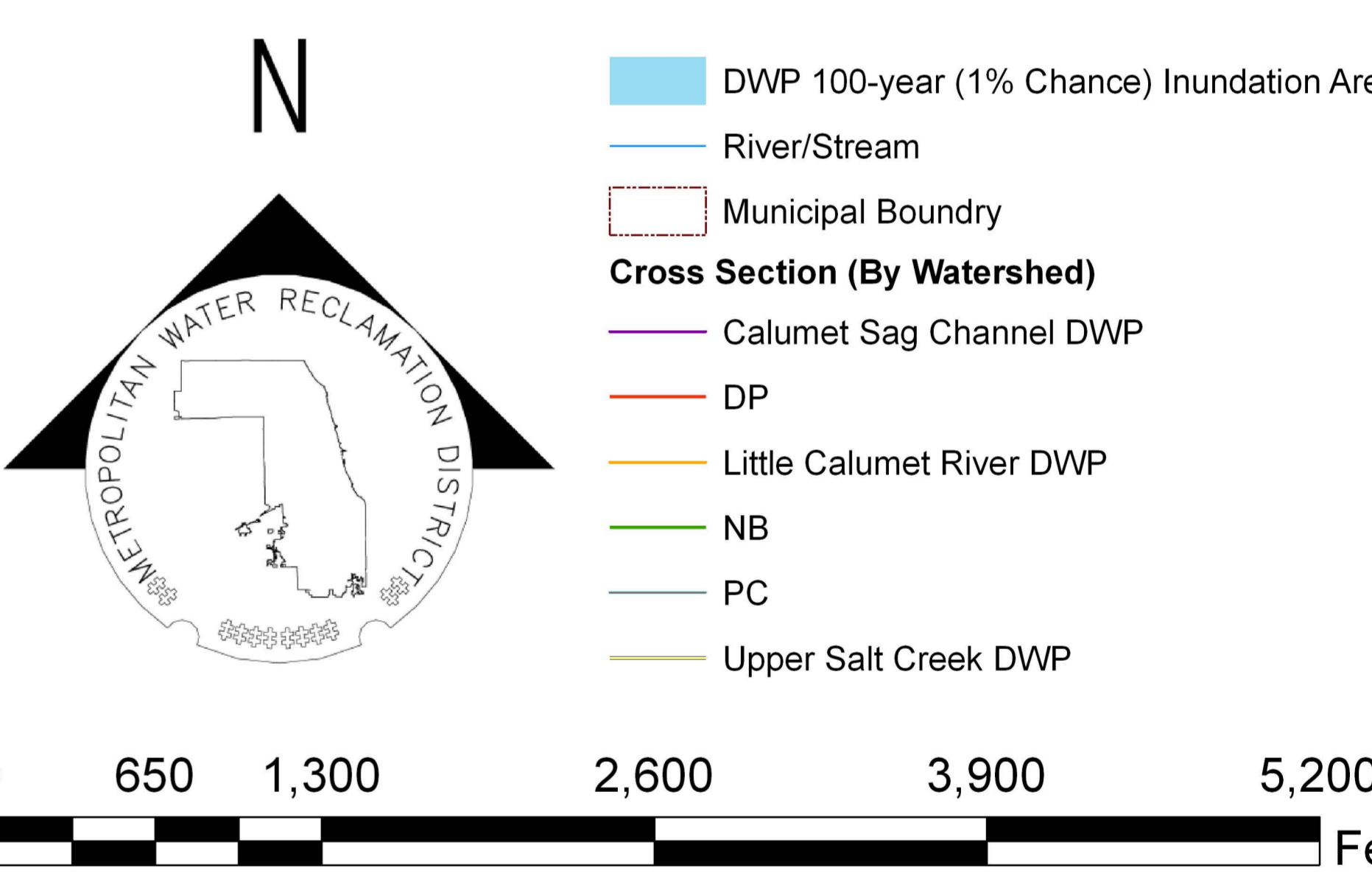
The inundation areas and water surface elevations shown on this map were developed as part of the Metropolitan Water Reclamation District of Greater Chicago's (MWRD) Stormwater Management Program. Specific details regarding the development of the new models used to generate the maps are described in MWRD's Detailed Watershed Plans, which are available for download at [www.mwrdd.org](http://www.mwrdd.org). To access, click on "Services & Facilities" in the top navigation bar, click on "Stormwater Management", and then click on "Stormwater Annual Reports and Publications" on the left navigation bar of the Stormwater Management webpage.

This map does not delineate floodways. The information contained on this map is in addition to and does not substitute for the relevant Federal Emergency Management Agency's (FEMA) Flood Insurance Study (FIS) and associated Flood Insurance Rate Map (FIRM).

Elevations stated on this map are consistent with the North American Vertical Datum (NAVD) 1988. Flood elevations must be compared to ground structures referenced to the same datum. Hydraulic profiles of modeled waterways are available for download at [www.mwrdd.org](http://www.mwrdd.org). To access, click on "Services & Facilities" in the top navigation bar, click on "Stormwater Management", and then click on "Inundation Maps & Profiles" on the left navigation bar of the Stormwater Management webpage.

The corporate limits shown on this map are based on the best information available at the time of study.

If you have questions on this map, please contact the MWRD's Engineering Department-Stormwater Management Section, at 312-751-5600, or via e-mail [Stormwater@mwrdd.org](mailto:Stormwater@mwrdd.org).



Metropolitan Water Reclamation District of Greater Chicago

# Cook County Inundation Map Panel 0728

The area depicted in this map corresponds to FEMA's DFIRM Panel: 17031C0728J