

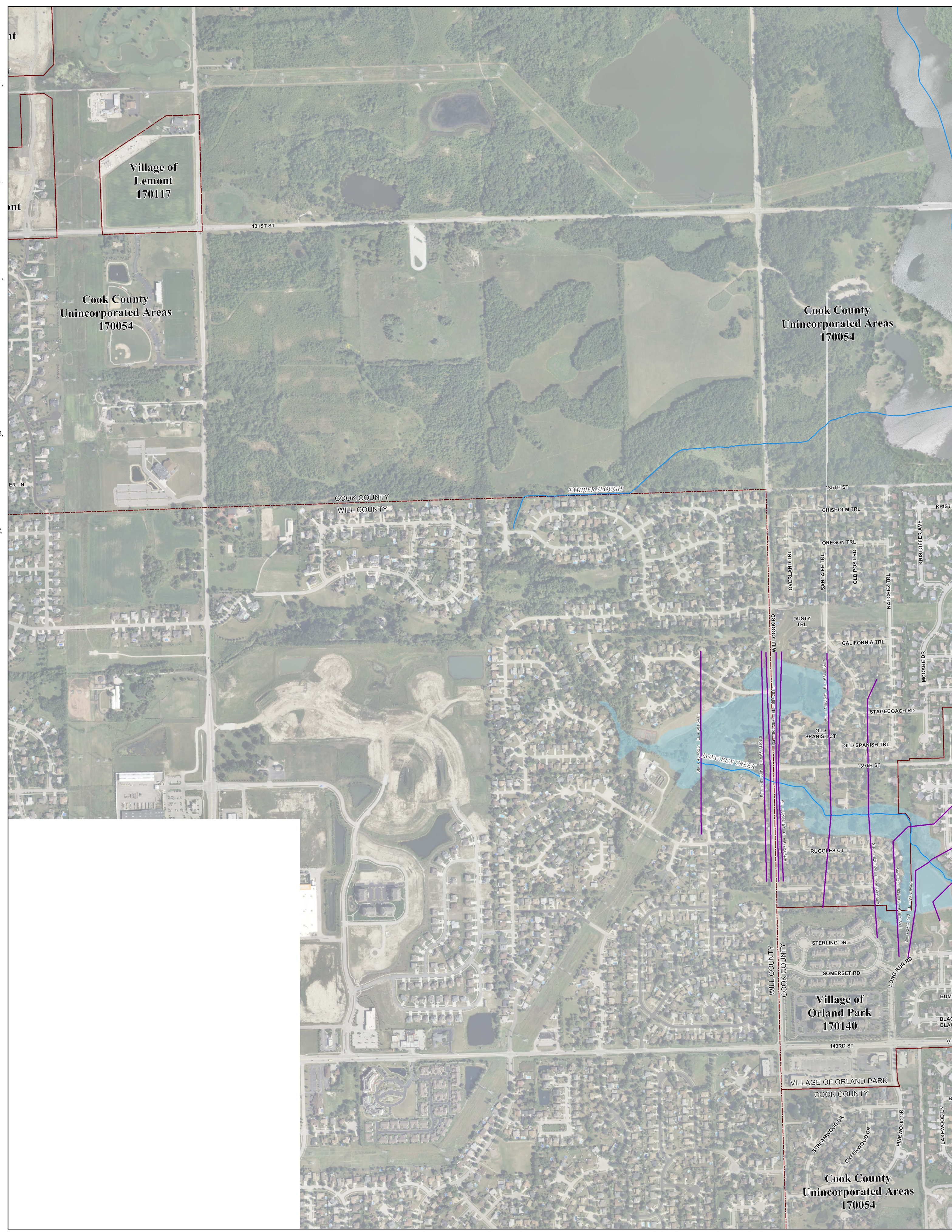
Municipality Index

| | |
|---|--|
| Arling: 0609, 0617, 0628, 0636, 0637, 0638, 0639 | La Grange Park: 0478 |
| Arlington Heights: 0044, 0063, 0064, 0162, 0184, 0192, 0201, 0202, 0203, 0204, 0211, 0212 | La Grange: 0478, 0486 |
| Barrington Hills: 0015, 0020, 0155, 0156, 0157 | Lansing: 0754, 0756, 0758, 0759, 0762, 0766, 0767 |
| Barrington: 0202, 0203 | Lemont: 0567, 0569, 0579, 0583, 0586, 0587, 0588, 0589, 0591, 0593 |
| Bartlett: 0144, 0163, 0164, 0168, 0285, 0305, 0306 | Lincolnwood: 0244, 0265, 0382, 0401, 0402 |
| Bedford Park: 0487, 0488, 0489, 0495, 0515, 0606 | Lynwood: 0762, 0764, 0766, 0767, 0768, 0769, 0831, 0832 |
| Bellwood: 0369, 0388, 0457, 0476 | Lyons: 0479, 0483, 0487, 0491 |
| Bensenville: 0358 | Markham: 0726, 0727, 0729, 0731, 0732, 0733, 0734 |
| Berkeley: 0368, 0369, 0456 | Mattoon: 0718, 0719, 0738, 0739, 0781, 0782, 0801, 0802 |
| Berwyn: 0483, 0484, 0485 | Maywood: 0388, 0389, 0476, 0477 |
| Blue Island: 0637, 0639, 0643, 0644, 0645 | Mc Cook: 0486, 0487, 0491 |
| Bridgeview: 0465, 0602, 0606, 0609 | Melrose Park: 0367, 0369, 0386, 0387, 0388, 0389 |
| Broadview: 0476, 0477 | Merrionette Park: 0630, 0637 |
| Brookfield: 0478, 0479, 0486, 0487 | Midlothian: 0619, 0638, 0639, 0707, 0726, 0727 |
| Buffalo Grove: 0063, 0064 | Morton Grove: 0237, 0241, 0242, 0243, 0244 |
| Burbank: 0495, 0515, 0606, 0607, 0630 | Mount Prospect: 0202, 0203, 0204, 0206, 0207, 0208, 0209, 0211, 0212, 0214, 0216 |
| Burnham: 0664, 0668, 0669 | Niles: 0236, 0237, 0238, 0239, 0241, 0243, 0244 |
| Burr Ridge: 0466, 0468, 0469, 0681, 0582 | Northridge: 0376, 0379, 0380, 0385 |
| Calumet City: 0664, 0668, 0669, 0752, 0754, 0756, 0757, 0758, 0759 | North Riverside: 0476, 0477, 0479, 0483, 0485 |
| Calumet Park: 0643, 0644, 0645 | Northbrook: 0069, 0088, 0089, 0093, 0207, 0226, 0227, 0231, 0232 |
| Chicago Heights: 0742, 0743, 0744, 0763, 0806, 0807, 0826 | Northfield: 0231, 0232, 0233, 0234 |
| Chicago Ridge: 0606, 0607, 0608, 0609 | Northlake: 0366, 0367, 0368, 0369 |
| Chicago: 0214, 0218, 0219, 0239, 0243, 0244, 0265, 0270, 0352, 0356, 0357, 0358, 0359, 0376, 0378, 0380, 0382, 0385, 0386, 0387, 0395, 0401, 0402, 0403, 0404, 0410, 0415, 0416, 0417, 0418, 0419, 0438, 0440, 0484, 0485, 0491, 0492, 0495, 0503, 0504, 0505, 0506, 0507, 0508, 0509, 0515, 0520, 0526, 0528, 0529, 0540, 0545, 0528, 0630, 0635, 0636, 0637, 0645, 0655, 0658, 0659, 0660, 0661, 0662, 0663, 0664, 0668, 0669, 0670 | Oak Forest: 0618, 0619, 0706, 0707, 0709, 0726, 0727, 0728, 0729 |
| Cicero: 0484, 0485, 0503, 0505 | Oak Lawn: 0606, 0607, 0608, 0609, 0617, 0628, 0630 |
| Country Club Hills: 0728, 0729, 0736, 0737 | Oak Park: 0395, 0485 |
| Countryside: 0467, 0469, 0486, 0488 | Olympia Fields: 0739, 0743 |
| Crestwood: 0617, 0619, 0636, 0638, 0639 | Orland Hills: 0701, 0702, 0703, 0704 |
| Dyer Park: 0038, 0039, 0043 | Orland Park: 0593, 0594, 0613, 0614, 0618, 0682, 0684, 0692, 0701, 0702, 0703, 0704, 0706, 0711 |
| Deerfield: 0069, 0088, 0089 | Palatine: 0038, 0039, 0043, 0044, 0177, 0179, 0181, 0182, 0183 |
| Des Plaines: 0208, 0209, 0212, 0214, 0216, 0217, 0218, 0219, 0236, 0238, 0357, 0376 | Palos Heights: 0612, 0614, 0616, 0617, 0618, 0619 |
| Dimmois: 0643, 0644, 0731 | Palos Park: 0603, 0604, 0608, 0611, 0612, 0616 |
| Dolton: 0644, 0663, 0664, 0732, 0751, 0752 | Palos Park: 0592, 0594, 0611, 0612, 0613, 0614, 0616 |
| East Dundee: 0155 | Park Forest: 0739, 0743, 0802, 0806, 0807 |
| East Hazel Crest: 0733, 0734 | Park Ridge: 0236, 0237, 0238, 0239, 0376, 0380 |
| Elgin: 0135, 0142, 0144, 0155, 0161, 0163, 0305 | Phoenix: 0732, 0751 |
| Elk Grove Village: 0193, 0194, 0211, 0213, 0214, 0218, 0331, 0332, 0351, 0352 | Posen: 0639, 0643, 0727, 0731 |
| Elmhurst: 0456 | Prospect Heights: 0201, 0202, 0206, 0207, 0208 |
| Elmwood Park: 0380, 0387, 0395 | Richton Park: 0781, 0782, 0801, 0802 |
| Evanston: 0253, 0255, 0260, 0265, 0270 | River Forest: 0307, 0309, 0395 |
| Evergreen Park: 0628, 0630, 0635 | River Grove: 0380, 0386, 0387 |
| Flossmoor: 0737, 0739, 0741, 0742, 0743, 0744 | Riverside: 0479, 0483 |
| Ford Heights: 0763, 0764, 0768, 0826, 0827 | Robbins: 0638, 0639 |
| Forest Park: 0389, 0395, 0477, 0485 | Rolling Meadows: 0179, 0181, 0182, 0183, 0184, 0191, 0192, 0211 |
| Forest View: 0484, 0491, 0492 | Roselle: 0193, 0330, 0331 |
| Frankfort: 0781, 0782 | Rosemont: 0219, 0357, 0376 |
| Franklin Park: 0358, 0359, 0366, 0367, 0378, 0386 | Sauk Village: 0754, 0759, 0826, 0827, 0831 |
| Glencoe: 0093, 0094, 0113, 0231, 0232, 0251 | Schaumburg: 0167, 0169, 0179, 0183, 0184, 0186, 0187, 0188, 0189, 0191, 0192, 0193, 0194, 0307, 0330 |
| Glenview: 0207, 0209, 0226, 0227, 0228, 0229, 0231, 0233, 0234, 0236, 0237, 0241 | Schiller Park: 0357, 0359, 0376, 0378 |
| Glenwood: 0742, 0761, 0762, 0763, 0764 | Skokie: 0234, 0242, 0244, 0253, 0295 |
| Golf: 0233, 0234, 0241, 0242 | South Barrington: 0155, 0156, 0157, 0158, 0159, 0176, 0178 |
| Harwood Heights: 0380, 0385 | South Chicago Heights: 0807, 0826 |
| Hazel Crest: 0729, 0733, 0734, 0737 | South Holland: 0732, 0734, 0751, 0752, 0753, 0754 |
| Hickory Hills: 0601, 0602, 0603, 0604, 0606, 0608 | Steger: 0807, 0826, 0827 |
| Hillside: 0368, 0369, 0456, 0457 | Stickney: 0483, 0484, 0491, 0503 |
| Hinsdale: 0458, 0466, 0467, 0468, 0469 | Stone Park: 0367, 0369, 0386, 0388 |
| Hodgkins: 0469, 0486, 0487, 0488, 0489, 0582, 0601 | Streamwood: 0162, 0163, 0164, 0166, 0167, 0168, 0169, 0306 |
| Hoffman Estates: 0155, 0157, 0158, 0159, 0161, 0162, 0166, 0167, 0176, 0178, 0186, 0187, 0188, 0189, 0191 | Summit: 0487, 0489, 0491, 0495 |
| Hometown: 0630 | Thornton: 0734, 0742, 0753, 0761 |
| Homewood: 0729, 0733, 0734, 0737, 0741, 0742 | Tinley Park: 0702, 0703, 0704, 0706, 0707, 0708, 0709, 0711, 0712, 0716, 0717, 0719 |
| Indian Head Park: 0468, 0469 | University Park: 0801 |
| Inverness: 0020, 0038, 0039, 0157, 0176, 0177, 0178, 0179 | Westchester: 0456, 0457, 0458, 0459, 0476 |
| Justice: 0488, 0489, 0601, 0602 | Western Springs: 0458, 0459, 0460, 0467, 0468, 0469 |
| La Grange Park: 0459, 0476 | Wheeling: 0064, 0068, 0069, 0202, 0206, 0207 |
| La Grange: 0459, 0467 | Willow Springs: 0469, 0488, 0581, 0582, 0583, 0584, 0601 |
| | Wilmette: 0234, 0253, 0255, 0260 |
| | Wilmington: 0113, 0232, 0251, 0253, 0255 |
| | Worth: 0608, 0609, 0616, 0617 |

Panel Index

| | | | | | | | | | | | | | | | | | | | | | | | | | | | | | | | | | | | | | | | | | | | | | | | | | | | | | | | | | | | | | | | | | | | | | | | | | | | | | | | | | | | | | | | | | | | | | | | | | | | | | | | | | | | | | | | | | | | | | | | | | | | | | | | | | | | | | | | | | | | | | | | | | | | | | | | | | | | | | | | | | | | | | | | | | | | | | | | | | | | | | | | | | | | | | | | | | | | | | |
|------|------|------|------|------|------|------|------|------|------|------|------|------|------|------|------|------|------|------|------|------|------|------|------|------|------|------|------|------|------|------|------|------|------|------|------|------|------|------|------|------|------|------|------|------|------|------|------|------|------|------|------|------|------|------|------|------|------|------|------|------|------|------|------|------|------|------|------|------|------|------|------|------|------|------|------|------|------|------|------|------|------|------|------|------|------|------|------|------|------|------|------|------|------|------|------|------|------|------|------|------|------|------|------|------|------|------|------|------|------|------|------|------|------|------|------|------|------|------|------|------|------|------|------|------|------|------|------|------|------|------|------|------|------|------|------|------|------|------|------|------|------|------|------|------|------|------|------|------|------|------|------|------|------|------|------|------|------|------|------|------|------|------|------|------|------|------|------|------|------|------|------|------|------|------|------|------|------|------|------|------|------|------|------|------|------|------|------|------|------|------|------|------|------|------|------|------|------|
| 0015 | 0020 | 0025 | 0030 | 0035 | 0040 | 0045 | 0050 | 0055 | 0060 | 0065 | 0070 | 0075 | 0080 | 0085 | 0090 | 0095 | 0100 | 0105 | 0110 | 0115 | 0120 | 0125 | 0130 | 0135 | 0140 | 0145 | 0150 | 0155 | 0160 | 0165 | 0170 | 0175 | 0180 | 0185 | 0190 | 0195 | 0200 | 0205 | 0210 | 0215 | 0220 | 0225 | 0230 | 0235 | 0240 | 0245 | 0250 | 0255 | 0260 | 0265 | 0270 | 0275 | 0280 | 0285 | 0290 | 0295 | 0300 | 0305 | 0310 | 0315 | 0320 | 0325 | 0330 | 0335 | 0340 | 0345 | 0350 | 0355 | 0360 | 0365 | 0370 | 0375 | 0380 | 0385 | 0390 | 0395 | 0400 | 0405 | 0410 | 0415 | 0420 | 0425 | 0430 | 0435 | 0440 | 0445 | 0450 | 0455 | 0460 | 0465 | 0470 | 0475 | 0480 | 0485 | 0490 | 0495 | 0500 | 0505 | 0510 | 0515 | 0520 | 0525 | 0530 | 0535 | 0540 | 0545 | 0550 | 0555 | 0560 | 0565 | 0570 | 0575 | 0580 | 0585 | 0590 | 0595 | 0600 | 0605 | 0610 | 0615 | 0620 | 0625 | 0630 | 0635 | 0640 | 0645 | 0650 | 0655 | 0660 | 0665 | 0670 | 0675 | 0680 | 0685 | 0690 | 0695 | 0700 | 0705 | 0710 | 0715 | 0720 | 0725 | 0730 | 0735 | 0740 | 0745 | 0750 | 0755 | 0760 | 0765 | 0770 | 0775 | 0780 | 0785 | 0790 | 0795 | 0800 | 0805 | 0810 | 0815 | 0820 | 0825 | 0830 | 0835 | 0840 | 0845 | 0850 | 0855 | 0860 | 0865 | 0870 | 0875 | 0880 | 0885 | 0890 | 0895 | 0900 | 0905 | 0910 | 0915 | 0920 | 0925 | 0930 | 0935 | 0940 | 0945 | 0950 | 0955 | 0960 | 0965 | 0970 | 0975 | 0980 | 0985 | 0990 | 0995 | 1000 |
|------|------|------|------|------|------|------|------|------|------|------|------|------|------|------|------|------|------|------|------|------|------|------|------|------|------|------|------|------|------|------|------|------|------|------|------|------|------|------|------|------|------|------|------|------|------|------|------|------|------|------|------|------|------|------|------|------|------|------|------|------|------|------|------|------|------|------|------|------|------|------|------|------|------|------|------|------|------|------|------|------|------|------|------|------|------|------|------|------|------|------|------|------|------|------|------|------|------|------|------|------|------|------|------|------|------|------|------|------|------|------|------|------|------|------|------|------|------|------|------|------|------|------|------|------|------|------|------|------|------|------|------|------|------|------|------|------|------|------|------|------|------|------|------|------|------|------|------|------|------|------|------|------|------|------|------|------|------|------|------|------|------|------|------|------|------|------|------|------|------|------|------|------|------|------|------|------|------|------|------|------|------|------|------|------|------|------|------|------|------|------|------|------|------|------|------|------|------|

Not available. Contact MWRD for further information



NOTES TO USER:

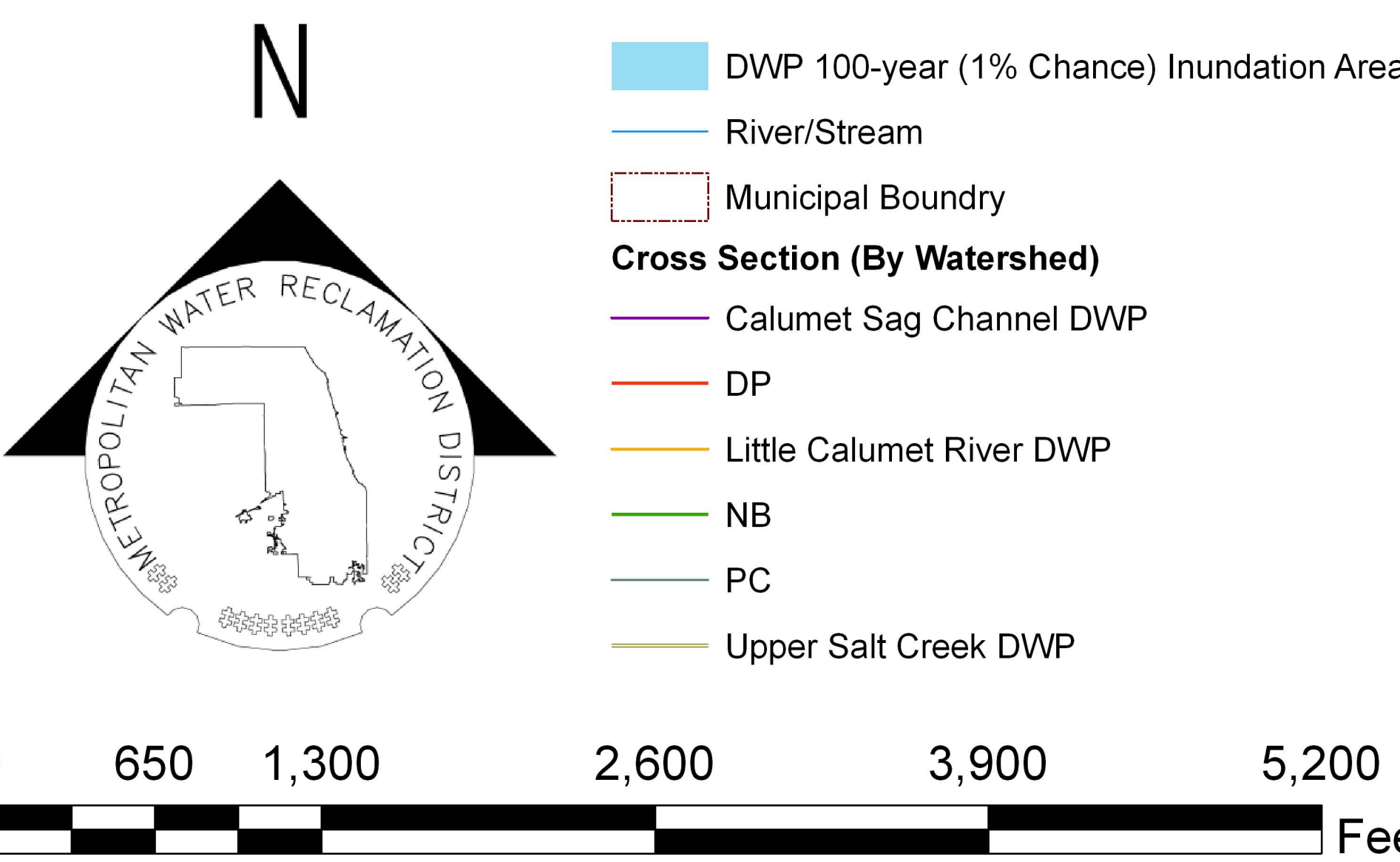
The inundation areas and water surface elevations shown on this map were developed as part of the Metropolitan Water Reclamation District of Greater Chicago's (MWRD) Stormwater Management Program. Specific details regarding the development of the new models used to generate the maps are described in MWRD's Detailed Watershed Plans, which are available for download at www.mwrdd.org. To access, click on "Services & Facilities" in the top navigation bar, click on "Stormwater Management", and then click on "Stormwater Annual Reports and Publications" on the left navigation bar of the Stormwater Management webpage.

This map does not delineate floodways. The information contained on this map is in addition to and does not substitute for the relevant Federal Emergency Management Agency's (FEMA) Flood Insurance Study (FIS) and associated Flood Insurance Rate Map (FIRM).

Elevations stated on this map are consistent with the North American Vertical Datum (NAVD) 1988. Flood elevations must be compared to ground structures referenced to the same datum. Hydraulic profiles of modeled waterways are available for download at www.mwrdd.org. To access, click on "Services & Facilities" in the top navigation bar, click on "Stormwater Management", and then click on "Inundation Maps & Profiles" on the left navigation bar of the Stormwater Management webpage.

The corporate limits shown on this map are based on the best information available at the time of study.

If you have questions on this map, please contact the MWRD's Engineering Department-Stormwater Management Section, at 312-751-5600, or via e-mail Stormwater@mwrdd.org.



Cook County Inundation Map

Panel 0593

The area depicted in this map corresponds to FEMA's DFIRM Panel: 17031C0593J