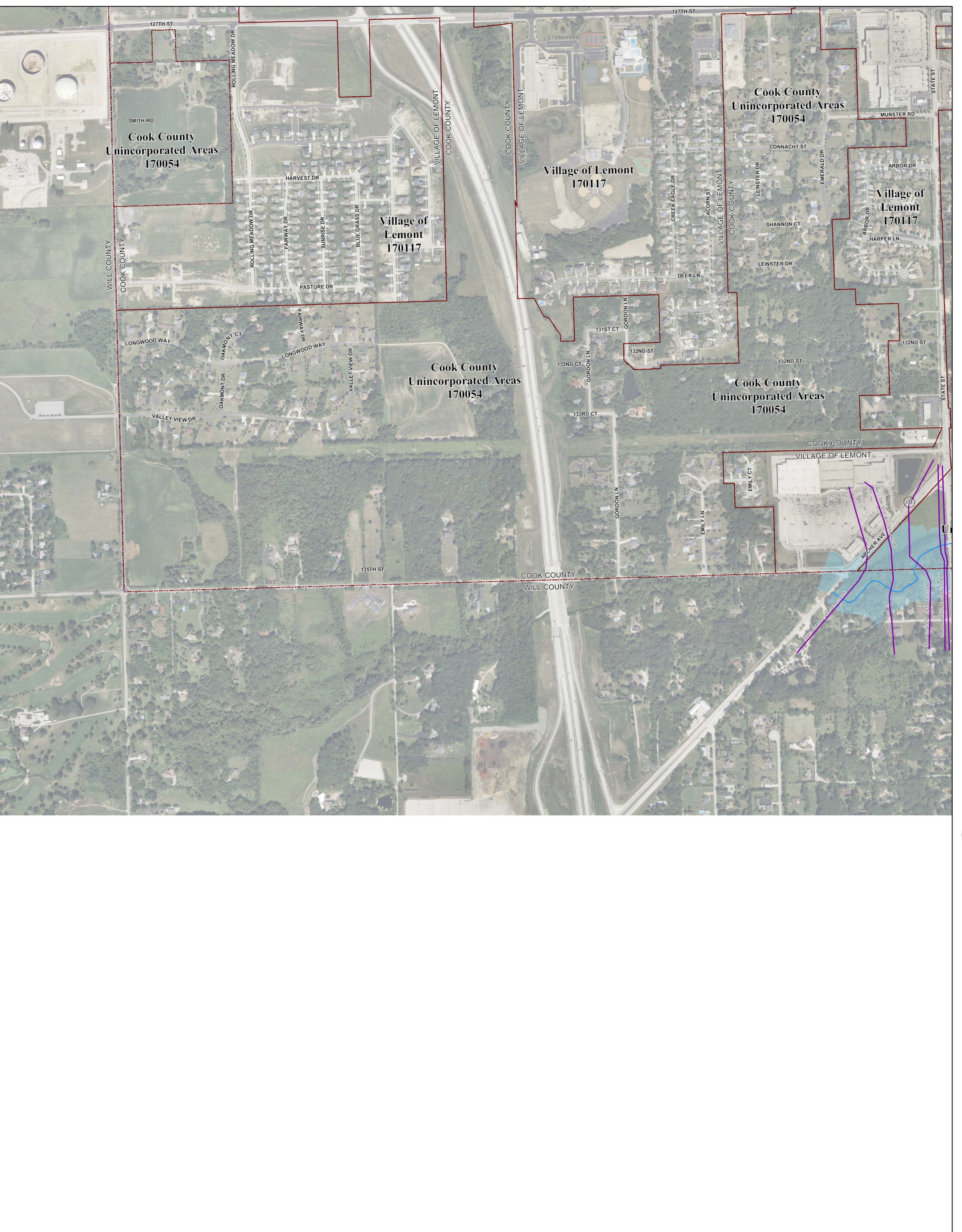


# Municipality Index

Arling Heights: 0609, 0617, 0628, 0636, 0637, 0639, 0639 Arlington Heights: 0044, 0063, 0064, 0162, 0184, 0192, 0201, 0202, 0203, 0204, 0211, 0212 Barrington Hills: 0015, 0020, 0155, 0156, 0157 Barrington: 0220, 0338 Bartlett: 0144, 0163, 0164, 0168, 0285, 0305, 0306 Bedford Park: 0487, 0488, 0489, 0495, 0515, 0606 Bellwood: 0369, 0388, 0457, 0476 Bensenville: 0358 Berkeley: 0368, 0369, 0456 Berwyn: 0483, 0484, 0485 Blue Island: 0637, 0639, 0643, 0644, 0645 Bridgeview: 0489, 0495, 0602, 0606, 0609 Broadview: 0476, 0477 Brookfield: 0478, 0479, 0486, 0487 Buffalo Grove: 0603, 0604 Burnham: 0495, 0515, 0606, 0607, 0630 Burnham: 0664, 0668, 0669 Burr Ridge: 0466, 0468, 0469, 0681, 0582 Calumet City: 0664, 0668, 0669, 0752, 0754, 0756, 0757, 0758, 0759 Calumet Park: 0643, 0644, 0645 Chicago Heights: 0742, 0743, 0744, 0763, 0806, 0807, 0826 Chicago Ridge: 0606, 0607, 0608, 0609 Chicago: 0214, 0218, 0219, 0239, 0243, 0244, 0265, 0270, 0352, 0356, 0357, 0358, 0359, 0376, 0378, 0380, 0382, 0385, 0386, 0387, 0395, 0401, 0402, 0403, 0404, 0410, 0415, 0416, 0417, 0418, 0419, 0438, 0440, 0484, 0485, 0491, 0492, 0495, 0503, 0504, 0505, 0506, 0507, 0508, 0519, 0520, 0526, 0528, 0530, 0540, 0545, 0528, 0630, 0635, 0636, 0637, 0645, 0655, 0658, 0659, 0660, 0661, 0662, 0663, 0664, 0668, 0669, 0670 Clearbrook: 0484, 0485, 0503, 0505 Country Club Hills: 0728, 0729, 0736, 0737 Country Hills: 0467, 0469, 0486, 0488 Crestwood: 0617, 0619, 0636, 0638, 0639 Deer Park: 0538 Deerfield: 0069, 0088, 0089 Des Plaines: 0208, 0209, 0212, 0214, 0216, 0217, 0218, 0219, 0236, 0238, 0357, 0376 Dillmoor: 0643, 0644, 0731 Dolton: 0644, 0663, 0664, 0732, 0751, 0752 East Dundee: 0155 East Hazel Crest: 0733, 0734 Egan: 0135, 0142, 0144, 0155, 0161, 0163, 0305 Elk Grove Village: 0193, 0194, 0211, 0213, 0214, 0218, 0331, 0332, 0351, 0352 Elnhurst: 0456 Elmwood Park: 0380, 0387, 0395 Evanston: 0253, 0255, 0260, 0265, 0270 Evergreen Park: 0628, 0630, 0635 Flossmoor: 0737, 0739, 0741, 0742, 0743, 0744 Ford Heights: 0763, 0764, 0768, 0826, 0827 Forest Park: 0389, 0395, 0477, 0485 Forest View: 0484, 0491, 0492 Frankfort: 0781, 0782 Franklin Park: 0358, 0359, 0366, 0367, 0378, 0386 Glencoe: 0093, 0094, 0113, 0231, 0232, 0251 Glenview: 0207, 0209, 0226, 0227, 0228, 0229, 0231, 0233, 0234, 0236, 0237, 0241 Glenwood: 0742, 0761, 0762, 0763, 0764 Golf: 0233, 0234, 0241, 0242 Hanover Park: 0168, 0169, 0306, 0307 Harvey: 0643, 0644, 0731, 0732, 0734, 0751 Harwood Heights: 0380, 0385 Hazel Crest: 0729, 0733, 0734, 0737 Hickory Hills: 0601, 0602, 0603, 0604, 0606, 0608 Hillsdale: 0368, 0369, 0456, 0457 Hinsdale: 0458, 0466, 0467, 0468, 0469 Hodgins: 0469, 0469, 0467, 0469, 0469, 0469, 0467, 0468, 0469 Hoffman Estates: 0155, 0157, 0158, 0159, 0161, 0162, 0166, 0167, 0176, 0178, 0179, 0186, 0187, 0188, 0189, 0191 Hometown: 0630 Homerwood: 0729, 0733, 0734, 0737, 0741, 0742 Indian Head Park: 0468, 0469 Inverness: 0020, 0038, 0039, 0157, 0176, 0177, 0178, 0179 Justice: 0488, 0489, 0601, 0602 Kenilworth: 0253, 0255 La Grange Park: 0478, 0478, 0479, 0486, 0487 La Grange: 0459, 0467	La Grange Park: 0478 La Grange: 0478, 0486 Lansing: 0754, 0756, 0758, 0759, 0762, 0766, 0767 Lemont: 0567, 0569, 0579, 0583, 0586, 0587, 0588, 0589, 0591, 0593 Lincolnwood: 0244, 0265, 0382, 0401, 0402 Lynwood: 0762, 0764, 0766, 0767, 0768, 0769, 0831, 0832 Lyons: 0479, 0483, 0487, 0491 Markham: 0726, 0727, 0731, 0732, 0733, 0734 Matteson: 0718, 0719, 0738, 0739, 0781, 0782, 0801, 0802 Maywood: 0388, 0389, 0476, 0477 Mc Cook: 0486, 0487, 0491 Melrose Park: 0367, 0369, 0386, 0387, 0388, 0389 Merrietta Park: 0630, 0637 Morton Grove: 0237, 0241, 0242, 0243, 0244 Mount Prospect: 0202, 0203, 0204, 0206, 0207, 0208, 0209, 0211, 0212, 0214, 0216 Niles: 0238, 0237, 0238, 0239, 0241, 0243, 0244 Northridge: 0378, 0379, 0380, 0385 Northbrook: 0476, 0477, 0479, 0483, 0485 Northbrook: 0069, 0088, 0089, 0093, 0207, 0225, 0227, 0231, 0232 Northfield: 0231, 0232, 0233, 0234 Northlake: 0366, 0367, 0368, 0369 Oak Forest: 0618, 0619, 0706, 0707, 0709, 0726, 0727, 0728, 0729 Oak Lawn: 0606, 0607, 0608, 0609, 0617, 0628, 0630 Oak Park: 0395, 0495 Olympia Fields: 0738, 0743 Orland Hills: 0701, 0702, 0703, 0704 Orland Park: 0593, 0594, 0613, 0614, 0618, 0682, 0684, 0692, 0701, 0702, 0703, 0704, 0706, 0711 Palatine: 0038, 0039, 0043, 0044, 0177, 0179, 0181, 0182, 0183 Palos Heights: 0612, 0614, 0616, 0617, 0618, 0619 Palos Hills: 0603, 0604, 0608, 0611, 0612, 0616 Palos Park: 0592, 0594, 0611, 0612, 0613, 0614, 0616 Park Forest: 0739, 0743, 0802, 0806, 0807 Park Ridge: 0236, 0237, 0238, 0239, 0376, 0380 Phoenicia: 0732, 0751 Posen: 0639, 0643, 0727, 0731 Prospect Heights: 0201, 0202, 0206, 0207, 0208 Richton Park: 0781, 0782, 0801, 0802 River Forest: 0387, 0389, 0395 River Grove: 0380, 0388, 0387 Riverdale: 0643, 0644, 0645, 0661, 0663 Riverside: 0479, 0483 Robbins: 0538, 0539 Rolling Meadows: 0179, 0181, 0182, 0183, 0184, 0191, 0192, 0211, 0213, 0330, 0331 Rosemont: 0219, 0357, 0378 Sauk Village: 0754, 0769, 0826, 0827, 0831 Schaumburg: 0167, 0169, 0179, 0183, 0184, 0186, 0187, 0188, 0189, 0191, 0192, 0193, 0194, 0307, 0330 Schiller Park: 0357, 0359, 0378, 0378 Shoreline: 0234, 0242, 0244, 0263, 0265 South Barrington: 0155, 0156, 0157, 0158, 0159, 0176, 0178 South Chicago Heights: 0807, 0826 South Holland: 0729, 0734, 0751, 0752, 0753, 0754 Steger: 0807, 0826, 0827 Stickney: 0483, 0484, 0491, 0503 Stone Park: 0367, 0369, 0386, 0388 Streamwood: 0162, 0163, 0164, 0166, 0167, 0168, 0169, 0306 Summit: 0487, 0489, 0491, 0495 Thornton: 0734, 0742, 0753, 0761 Tinley Park: 0702, 0703, 0704, 0706, 0707, 0708, 0709, 0711, 0712, 0716, 0717, 0719 University Park: 0801 Westchester: 0456, 0457, 0458, 0459, 0476 Western Springs: 0458, 0459, 0460, 0467, 0468, 0469 Wheeling: 0064, 0068, 0069, 0202, 0206, 0207 Willow Springs: 0469, 0488, 0581, 0582, 0583, 0584, 0601 Wilmette: 0234, 0253, 0255, 0260 Wilmot: 0113, 0252, 0251, 0253, 0255 Worth: 0608, 0609, 0616, 0617
---	--

# Panel Index



# NOTES TO USER:

The inundation areas and water surface elevations shown on this map were developed as part of the Metropolitan Water Reclamation District of Greater Chicago's (MWRD) Stormwater Management Program. Specific details regarding the development of the new models used to generate the maps are described in MWRD's Detailed Watershed Plans, which are available for download at [www.mwrdd.org](http://www.mwrdd.org). To access, click on "Services & Facilities" in the top navigation bar, click on "Stormwater Management", and then click on "Stormwater Annual Reports and Publications" on the left navigation bar of the Stormwater Management webpage.

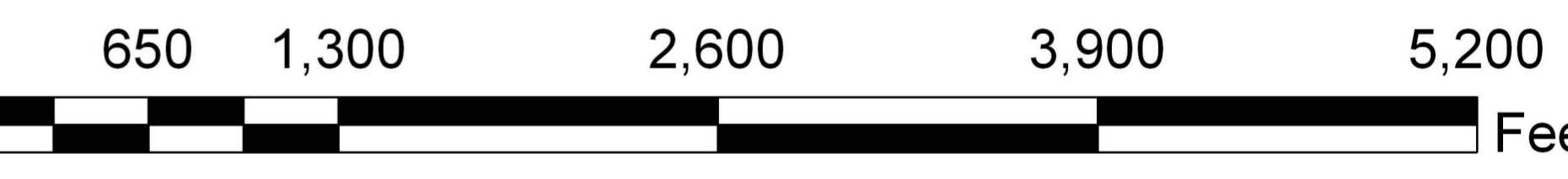
This map does not delineate floodways. The information contained on this map is in addition to and does not substitute for the relevant Federal Emergency Management Agency's (FEMA) Flood Insurance Study (FIS) and associated Flood Insurance Rate Map (FIRM).

Elevations stated on this map are consistent with the North American Vertical Datum (NAVD) 1988. Flood elevations must be compared to ground structures referenced to the same datum. Hydraulic profiles of modeled waterways are available for download at [www.mwrdd.org](http://www.mwrdd.org). To access, click on "Services & Facilities" in the top navigation bar, click on "Stormwater Management", and then click on "Inundation Maps & Profiles" on the left navigation bar of the Stormwater Management webpage.

The corporate limits shown on this map are based on the best information available at the time of study.

If you have questions on this map, please contact the MWRD's Engineering Department-Stormwater Management Section, at 312-751-5600, or via e-mail [Stormwater@mwrdd.org](mailto:Stormwater@mwrdd.org).

- DWP 100-year (1% Chance) Inundation Area
- River/Stream
- Municipal Boundary
- Cross Section (By Watershed)**
  - Calumet Sag Channel DWP
  - DP
  - Little Calumet River DWP
  - NB
  - PC
  - Upper Salt Creek DWP



Metropolitan Water Reclamation District of Greater Chicago

# Cook County Inundation Map

## Panel 0569

The area depicted in this map corresponds to FEMA's DFIRM Panel: 17031C0569J