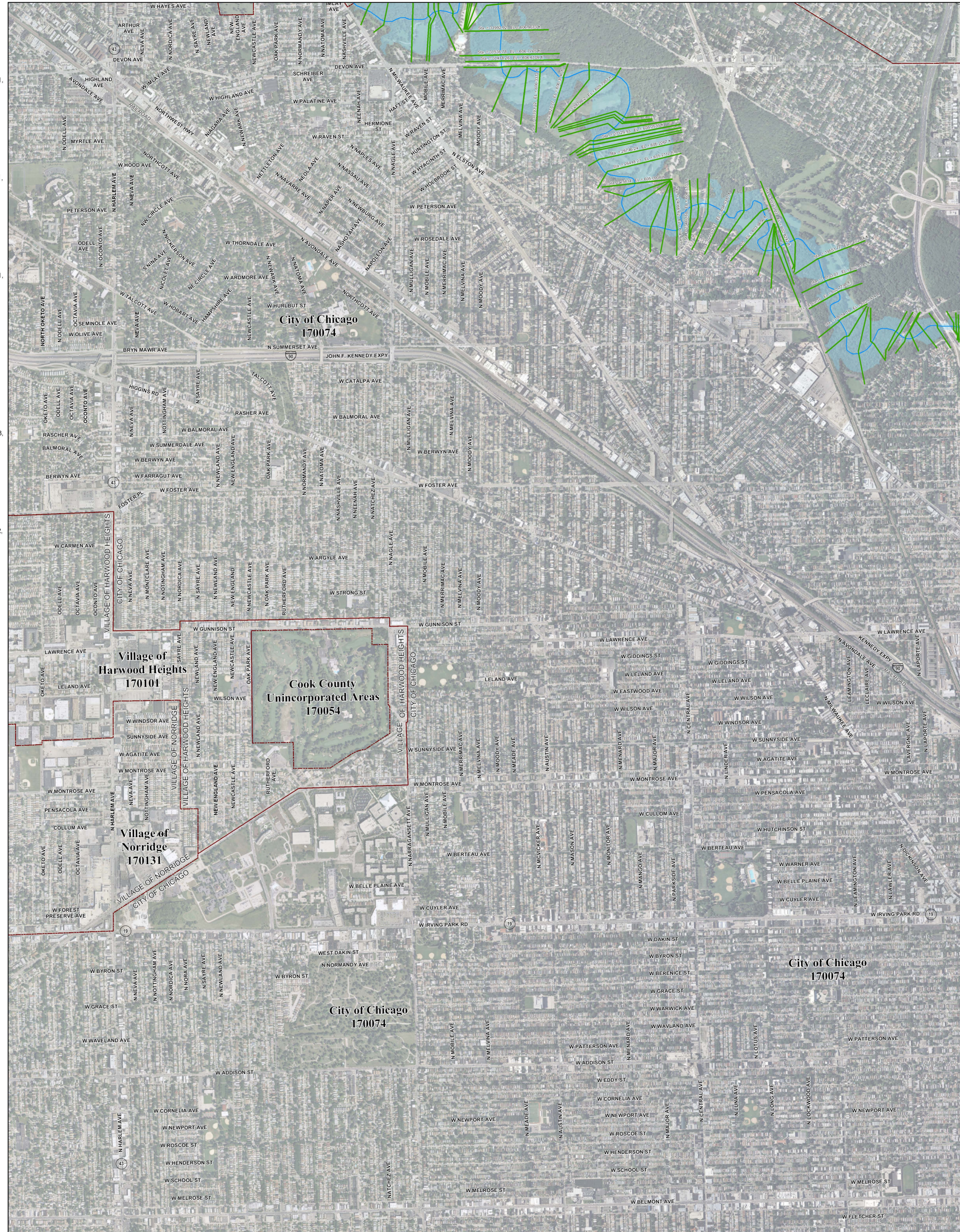
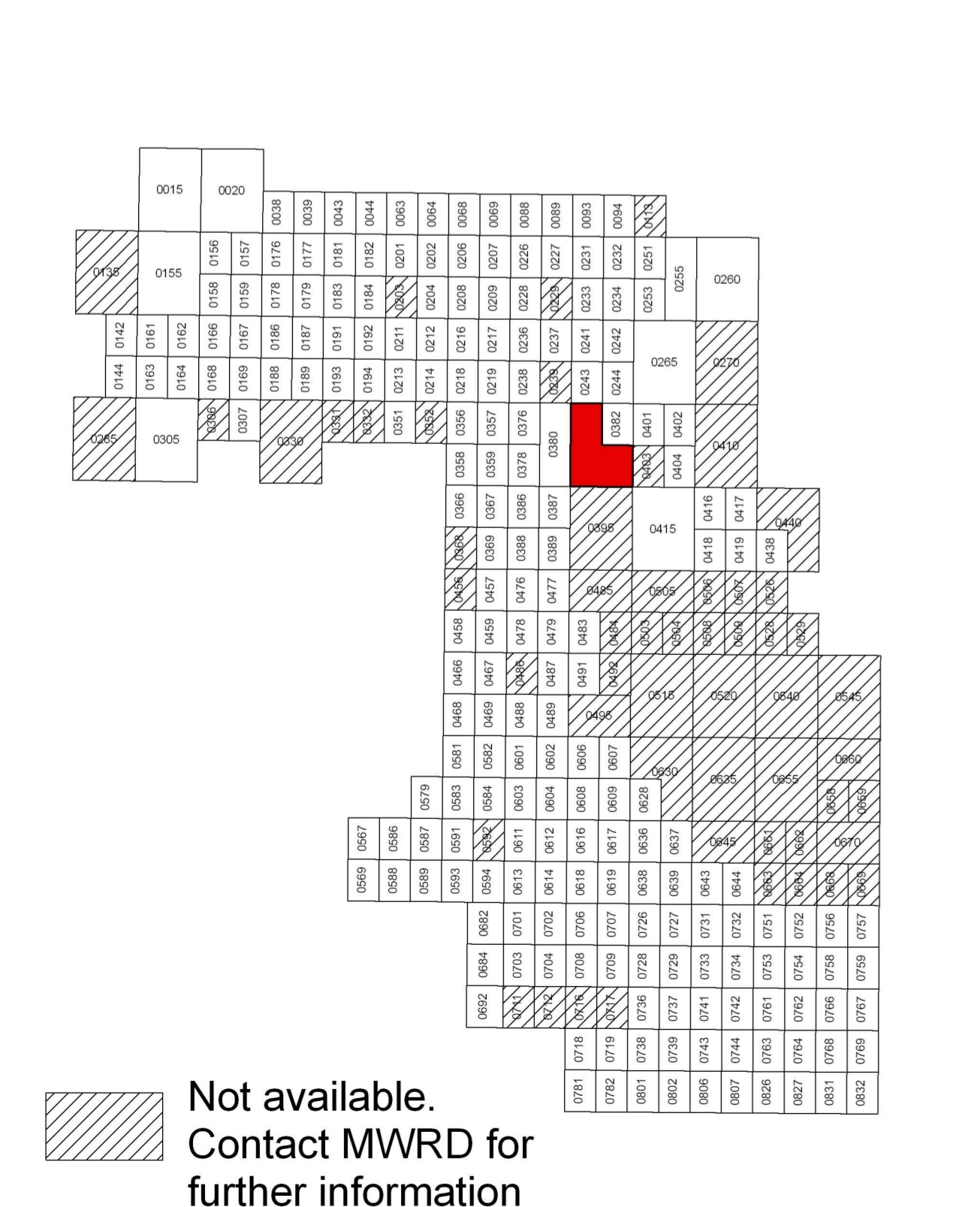


# Municipality Index

Alsip: 0609, 0617, 0628, 0636, 0637, 0638, 0639  
Arlington Heights: 0044, 0063, 0064, 0162, 0184, 0192, 0201, 0202, 0203, 0204, 0211, 0212  
Barrington Hills: 0015, 0020, 0155, 0156, 0157  
Barrington: 0220, 0238  
Bartlett: 0144, 0163, 0164, 0168, 0285, 0305, 0306  
Bedford Park: 0487, 0488, 0489, 0495, 0515, 0606  
Bellwood: 0369, 0388, 0457, 0476  
Bensenville: 0335, 0339  
Berkeley: 0368, 0369, 0456  
Berwyn: 0483, 0484, 0485  
Blue Island: 0637, 0639, 0643, 0644, 0645  
Buffalo Grove: 0663, 0664  
Bridgeview: 0460, 0602, 0606, 0609  
Broadview: 0476, 0477  
Brookfield: 0478, 0479, 0486, 0487  
Buffalo Grove: 0663, 0664  
Burbank: 0495, 0515, 0606, 0607, 0630  
Burnham: 0664, 0668, 0669  
Burr Ridge: 0466, 0468, 0469, 0681, 0582  
Calumet City: 0664, 0668, 0669, 0752, 0754, 0756, 0757, 0758, 0759  
Calumet Park: 0643, 0644, 0645  
Chicago Heights: 0742, 0743, 0744, 0763, 0806, 0807, 0826  
Chicago Ridge: 0606, 0607, 0608, 0609  
Chicago: 0214, 0218, 0219, 0239, 0243, 0244, 0265, 0270, 0352, 0356, 0357, 0358, 0359, 0376, 0378, 0380, 0382, 0385, 0386, 0387, 0395, 0401, 0402, 0403, 0404, 0410, 0415, 0416, 0417, 0418, 0419, 0438, 0440, 0484, 0485, 0491, 0492, 0495, 0503, 0504, 0505, 0506, 0507, 0538, 0539, 0540, 0526, 0528, 0529, 0540, 0545, 0628, 0630, 0635, 0636, 0637, 0645, 0655, 0658, 0659, 0660, 0661, 0662, 0663, 0664, 0668, 0669, 0670  
Chicago: 0484, 0485, 0503, 0505  
Country Club Hills: 0728, 0729, 0736, 0737  
Country Hills: 0467, 0469, 0486, 0488  
Crestwood: 0617, 0619, 0636, 0638, 0639  
Dear Park: 0038, 0039, 0043  
Deerfield: 0069, 0088, 0089  
Des Plaines: 0208, 0209, 0212, 0214, 0216, 0217, 0218, 0219, 0236, 0238, 0357, 0376  
Dolton: 0644, 0663, 0664, 0732, 0751, 0752  
East Dundee: 0155  
East Hazel Crest: 0733, 0734  
Elgin: 0135, 0142, 0144, 0155, 0161, 0163, 0305  
Elk Grove Village: 0193, 0194, 0211, 0213, 0214, 0218, 0331, 0332, 0351, 0352  
Einhurst: 0456  
Elmwood Park: 0380, 0387, 0395  
Evanston: 0253, 0255, 0260, 0265, 0270  
Evergreen Park: 0628, 0630, 0635  
Flossmoor: 0737, 0739, 0741, 0742, 0743, 0744  
Ford Heights: 0763, 0764, 0768, 0826, 0827  
Forest Park: 0389, 0395, 0477, 0485  
Forest View: 0484, 0491, 0492  
Frankfort: 0781, 0782  
Franklin Park: 0358, 0359, 0366, 0367, 0378, 0386  
Glenview: 0093, 0094, 0113, 0231, 0232, 0251  
Glenwood: 0742, 0761, 0762, 0763, 0764  
Golf: 0233, 0234, 0241, 0242  
Hanover Park: 0168, 0169, 0306, 0307  
Harvey: 0643, 0644, 0731, 0732, 0734, 0751  
Harwood Heights: 0380, 0385  
Hazel Crest: 0729, 0733, 0734, 0737  
Hickory Hills: 0601, 0602, 0603, 0604, 0606, 0608  
Hillside: 0368, 0369, 0456, 0457  
Hinsdale: 0458, 0466, 0467, 0468, 0469  
Hodgkins: 0469, 0469, 0469, 0469, 0469, 0502, 0601  
Hoffman Estates: 0155, 0157, 0158, 0159, 0161, 0162, 0166, 0167, 0176, 0178, 0179, 0186, 0187, 0188, 0189, 0191  
Hometown: 0630  
Homewood: 0729, 0733, 0734, 0737, 0741, 0742  
Indian Head Park: 0468, 0469  
Inverness: 0020, 0038, 0039, 0157, 0176, 0177, 0178, 0179  
Justice: 0488, 0489, 0601, 0602  
Kenilworth: 0253, 0255  
La Grange Park: 0459, 0476  
La Grange: 0459, 0467  
La Grange Park: 0478  
La Grange: 0478, 0486  
Lansing: 0754, 0756, 0758, 0759, 0762, 0766, 0767  
Lemont: 0567, 0569, 0579, 0583, 0586, 0587, 0588, 0589, 0591, 0593  
Lincolnwood: 0244, 0265, 0382, 0401, 0402  
Lyndwood: 0762, 0764, 0766, 0767, 0768, 0769, 0831, 0832  
Lyons: 0479, 0483, 0487, 0491  
Markham: 0726, 0727, 0729, 0731, 0732, 0733, 0734  
Matteson: 0718, 0719, 0738, 0739, 0781, 0782, 0801, 0802  
Maywood: 0388, 0389, 0476, 0477  
Mc Cook: 0486, 0487, 0491  
Melrose Park: 0367, 0369, 0386, 0387, 0388, 0389  
Merrionette Park: 0630, 0637  
Midlothian: 0619, 0638, 0639, 0707, 0726, 0727  
Morton Grove: 0237, 0241, 0242, 0243, 0244  
Mount Prospect: 0202, 0203, 0204, 0206, 0207, 0208, 0209, 0211, 0212, 0214, 0216  
Niles: 0236, 0237, 0238, 0239, 0241, 0243, 0244  
Northbrook: 0396, 0397, 0398, 0399  
North Riverside: 0476, 0477, 0479, 0483, 0485  
Northbrook: 0069, 0088, 0089, 0093, 0207, 0226, 0227, 0231, 0232, 0234  
Northfield: 0231, 0232, 0233, 0234  
Northlake: 0366, 0367, 0368, 0369  
Oak Forest: 0618, 0619, 0706, 0707, 0709, 0726, 0727, 0728, 0729  
Oak Lawn: 0606, 0607, 0608, 0609, 0617, 0628, 0630  
Oak Park: 0395, 0495  
Olympia Fields: 0739, 0743  
Orland Hills: 0701, 0702, 0703, 0704  
Orland Park: 0593, 0594, 0613, 0614, 0618, 0682, 0684, 0692, 0701, 0702, 0703, 0704, 0706, 0711  
Palatine: 0038, 0039, 0043, 0044, 0177, 0179, 0181, 0182, 0183  
Palos Heights: 0612, 0614, 0616, 0617, 0618, 0619  
Palos Hills: 0603, 0604, 0608, 0611, 0612, 0616, 0618  
Palos Park: 0592, 0594, 0611, 0612, 0613, 0614, 0616, 0618  
Park Forest: 0739, 0743, 0802, 0806, 0807  
Park Ridge: 0236, 0237, 0238, 0239, 0376, 0380  
Phoenix: 0732, 0751  
Posen: 0639, 0643, 0727, 0731  
Prospect Heights: 0201, 0202, 0206, 0207, 0208  
Richton Park: 0781, 0782, 0801, 0802  
River Forest: 0367, 0389, 0395  
River Grove: 0380, 0386, 0387  
Riverdale: 0643, 0644, 0645, 0661, 0663  
Riverside: 0479, 0483  
Robbins: 0638, 0639  
Rolling Meadows: 0179, 0181, 0182, 0183, 0184, 0191, 0192, 0211  
Roselle: 0193, 0330, 0331  
Rosemont: 0219, 0357, 0376  
Sauk Village: 0754, 0759, 0826, 0827, 0831  
Schaumburg: 0167, 0169, 0179, 0183, 0184, 0186, 0187, 0188, 0189, 0191, 0192, 0193, 0194, 0307, 0330  
Schiller Park: 0357, 0359, 0378, 0378  
Skokie: 0234, 0242, 0244, 0253, 0265  
South Barrington: 0155, 0156, 0157, 0158, 0159, 0176, 0178  
South Chicago Heights: 0807, 0826  
South Holland: 0732, 0734, 0751, 0752, 0753, 0754  
Steger: 0807, 0826, 0827  
Stickney: 0483, 0484, 0491, 0503  
Stone Park: 0367, 0369, 0386, 0388  
Streamwood: 0162, 0163, 0164, 0166, 0167, 0168, 0169, 0306  
Summit: 0487, 0488, 0491, 0495  
Thornton: 0734, 0742, 0753, 0761  
Tinley Park: 0702, 0703, 0704, 0706, 0707, 0708, 0709, 0711, 0712, 0716, 0717, 0719  
University Park: 0801  
Westchester: 0456, 0457, 0458, 0459, 0476  
Western Springs: 0458, 0459, 0460, 0467, 0468, 0469  
Wheeling: 0064, 0068, 0069, 0202, 0206, 0207  
Willow Springs: 0469, 0488, 0581, 0582, 0583, 0584, 0601  
Wilmette: 0234, 0253, 0255, 0260  
Winnetka: 0113, 0232, 0251, 0253, 0255  
Worth: 0508, 0509, 0616, 0617



# Panel Index



# NOTES TO USER:

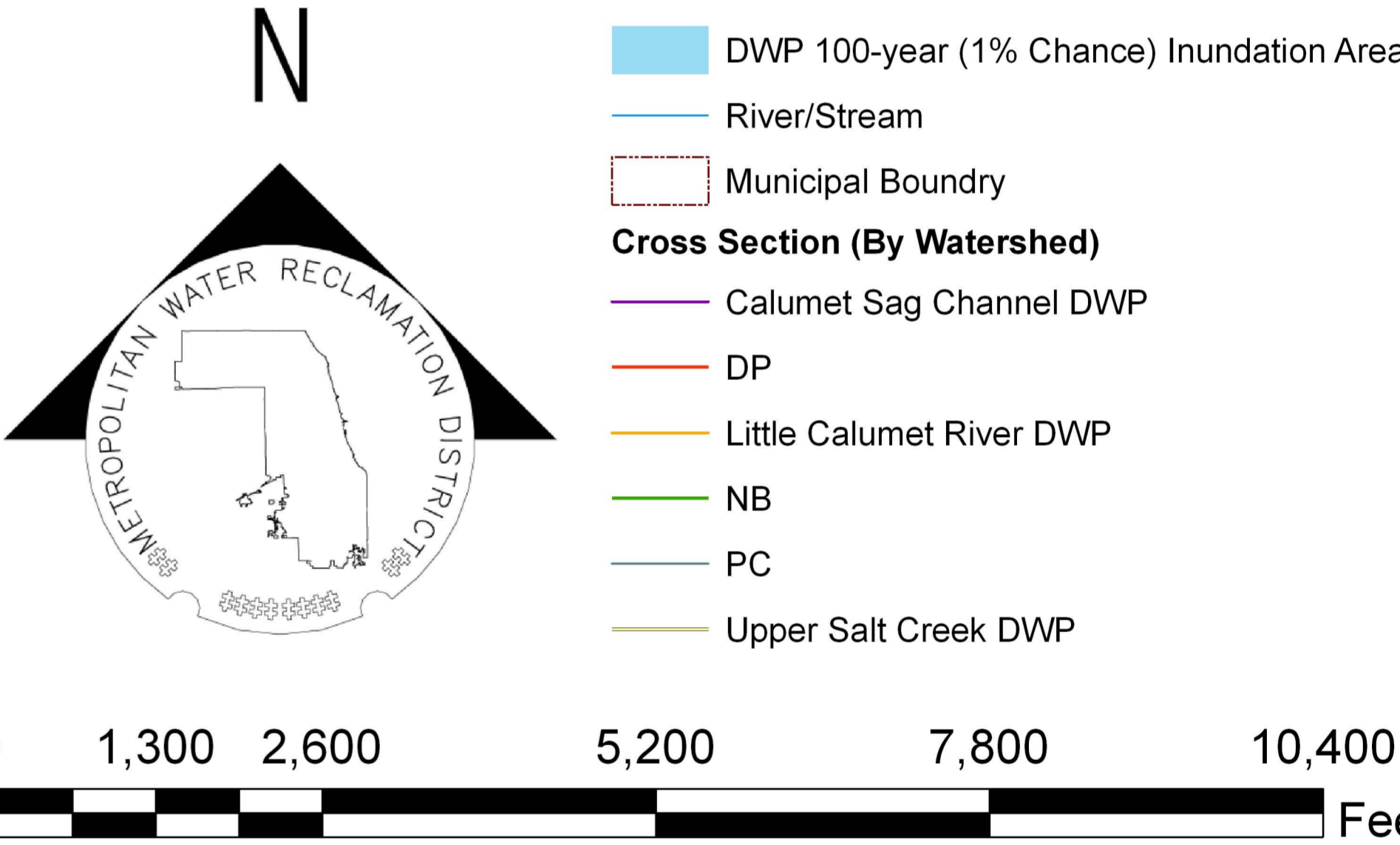
The inundation areas and water surface elevations shown on this map were developed as part of the Metropolitan Water Reclamation District of Greater Chicago's (MWRD) Stormwater Management Program. Specific details regarding the development of the new models used to generate the maps are described in MWRD's Detailed Watershed Plans, which are available for download at [www.mwr.org](http://www.mwr.org). To access, click on "Services & Facilities" in the top navigation bar, click on "Stormwater Management", and then click on "Stormwater Annual Reports and Publications" on the left navigation bar of the Stormwater Management webpage.

This map does not delineate floodways. The information contained on this map is in addition to and does not substitute for the relevant Federal Emergency Management Agency's (FEMA) Flood Insurance Study (FIS) and associated Flood Insurance Rate Map (FIRM).

Elevations stated on this map are consistent with the North American Vertical Datum (NAVD) 1988. Flood elevations must be compared to ground structures referenced to the same datum. Hydraulic profiles of modeled waterways are available for download at [www.mwr.org](http://www.mwr.org). To access, click on "Services & Facilities" in the top navigation bar, click on "Stormwater Management", and then click on "Inundation Maps & Profiles" on the left navigation bar of the Stormwater Management webpage.

The corporate limits shown on this map are based on the best information available at the time of study.

If you have questions on this map, please contact the MWRD's Engineering Department-Stormwater Management Section, at 312-751-5600, or via e-mail [Stormwater@mwr.org](mailto:Stormwater@mwr.org).



# Cook County Inundation Map

## Panel 0385

The area depicted in this map corresponds to FEMA's DFIRM Panel: 17031C0385J