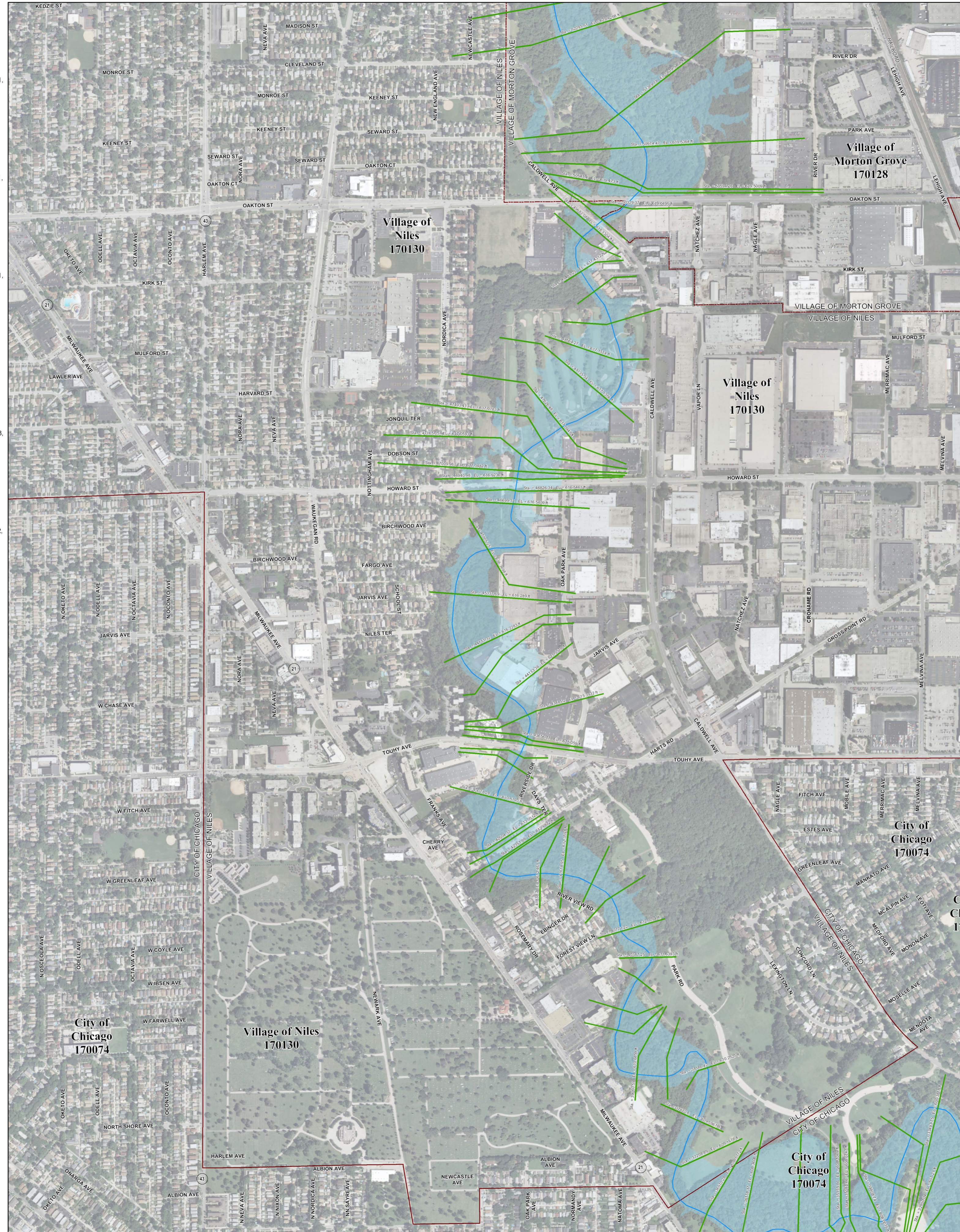


Municipality Index

Alsip: 0609, 0617, 0628, 0636, 0637, 0638, 0639	La Grange Park: 0478
Arlington Heights: 0044, 0063, 0064, 0182, 0184, 0192, 0201, 0202, 0203, 0204, 0211, 0212	La Grange: 0478, 0486
Barrington Hills: 0015, 0020, 0155, 0156, 0157	Lansing: 0754, 0756, 0758, 0759, 0762, 0766, 0767
Barrington: 0220, 0238	Lemont: 0567, 0569, 0579, 0583, 0586, 0587, 0588, 0589, 0591, 0593
Bartlett: 0144, 0163, 0164, 0168, 0285, 0305, 0306	Lincolnwood: 0244, 0265, 0382, 0401, 0402
Bedford Park: 0487, 0488, 0489, 0495, 0515, 0606	Lynwood: 0762, 0764, 0766, 0767, 0768, 0769, 0831, 0832
Bellwood: 0369, 0388, 0457, 0476	Lyons: 0479, 0483, 0487, 0491
Bensenville: 0359	Markham: 0726, 0727, 0731, 0732, 0733, 0734
Berkeley: 0368, 0369, 0456	Matteson: 0718, 0719, 0738, 0739, 0781, 0782, 0801, 0802
Beryyn: 0483, 0484, 0485	Maywood: 0388, 0389, 0476, 0477
Blue Island: 0637, 0639, 0643, 0644, 0645	Mc Cook: 0486, 0487, 0491
Buffalo Grove: 0663, 0664	Melrose Park: 0367, 0369, 0386, 0387, 0388, 0389
Bridgeview: 0602, 0606, 0609	Merrietta Park: 0630, 0637
Broadview: 0476, 0477	Middlefield: 0619, 0638, 0639, 0707, 0726, 0727
Brookfield: 0478, 0479, 0486, 0487	Morton Grove: 0237, 0241, 0242, 0243, 0244
Buffalo Grove: 0663, 0664	Mount Prospect: 0202, 0203, 0204, 0206, 0207, 0208, 0209, 0211, 0212, 0214, 0216
Burbank: 0495, 0515, 0606, 0607, 0630	Niles: 0236, 0237, 0238, 0239, 0241, 0243, 0244
Burnham: 0664, 0668, 0669	Northbrook: 0069, 0088, 0089, 0093, 0207, 0226, 0227, 0231, 0232
Burr Ridge: 0466, 0468, 0469, 0681, 0582	Northfield: 0231, 0232, 0233, 0234
Calumet City: 0664, 0668, 0669, 0752, 0754, 0756, 0757, 0758, 0759	Northlake: 0366, 0367, 0368, 0369
Calumet Park: 0643, 0644, 0645	Oak Forest: 0618, 0619, 0706, 0707, 0709, 0726, 0727, 0728, 0729
Chicago Heights: 0742, 0743, 0744, 0763, 0806, 0807, 0826	Oak Lawn: 0606, 0607, 0608, 0609, 0617, 0628, 0630
Chicago Ridge: 0606, 0607, 0608, 0609	Oak Park: 0395, 0485
Chicago: 0214, 0218, 0219, 0239, 0243, 0244, 0265, 0270, 0352, 0356, 0357, 0358, 0359, 0376, 0378, 0380, 0382, 0385, 0386, 0387, 0395, 0401, 0402, 0403, 0404, 0410, 0415, 0416, 0417, 0418, 0419, 0438, 0440, 0484, 0485, 0491, 0492, 0495, 0503, 0504, 0505, 0506, 0507, 0508, 0509, 0519, 0520, 0526, 0528, 0539, 0540, 0545, 0528, 0630, 0635, 0636, 0637, 0645, 0655, 0658, 0659, 0660, 0661, 0662, 0663, 0664, 0668, 0669, 0670	Orland Hills: 0701, 0702, 0703, 0704
Cicero: 0484, 0485, 0503, 0505	Orland Park: 0593, 0594, 0613, 0614, 0618, 0682, 0684, 0692, 0701, 0702, 0703, 0704, 0706, 0711
Country Club Hills: 0728, 0729, 0736, 0737	Palatine: 0038, 0039, 0043, 0044, 0177, 0179, 0181, 0182, 0183
Countyline: 0467, 0469, 0486, 0488	Palos Heights: 0612, 0614, 0616, 0617, 0618, 0619
Crestwood: 0617, 0619, 0636, 0638, 0639	Palos Hills: 0603, 0604, 0608, 0611, 0612, 0616
Deer Park: 0592, 0594, 0611, 0612, 0613, 0614, 0616	Palos Park: 0592, 0594, 0611, 0612, 0613, 0614, 0616
Deerfield: 0069, 0088, 0089	Park Forest: 0739, 0743, 0802, 0806, 0807
Des Plaines: 0208, 0209, 0212, 0214, 0216, 0217, 0218, 0219, 0236, 0238, 0357, 0376	Park Ridge: 0236, 0237, 0238, 0239, 0376, 0380
Diamond: 0643, 0644, 0731	Phoenix: 0732, 0751
East Dundee: 0155	Posen: 0639, 0643, 0727, 0731
East Hazel Crest: 0733, 0734	Prospect Heights: 0201, 0202, 0206, 0207, 0208
Elgin: 0135, 0142, 0144, 0155, 0161, 0163, 0305	Richton Park: 0781, 0782, 0801, 0802
Elk Grove Village: 0193, 0194, 0211, 0213, 0214, 0218, 0331, 0332, 0351, 0352	River Forest: 0307, 0309, 0395
Elmhurst: 0456	River Grove: 0380, 0386, 0387
Elmwood Park: 0380, 0387, 0395	Riversdale: 0643, 0644, 0645, 0661, 0663
Evanston: 0253, 0255, 0260, 0265, 0270	Riverside: 0479, 0483
Evergreen Park: 0628, 0630, 0635	Robbins: 0638, 0639
Flossmoor: 0737, 0739, 0741, 0742, 0743, 0744	Rolling Meadows: 0179, 0181, 0182, 0183, 0184, 0191, 0192, 0211, 0212
Ford Heights: 0763, 0764, 0768, 0826, 0827	Roselle: 0193, 0330, 0331
Forest Park: 0389, 0395, 0477, 0485	Rosemont: 0219, 0357, 0376
Forest View: 0484, 0491, 0492	Sauk Village: 0754, 0758, 0826, 0827, 0831
Frankfort: 0781, 0782	Schaumburg: 0167, 0169, 0179, 0183, 0184, 0186, 0187, 0188, 0189, 0191, 0192, 0193, 0194, 0307, 0330
Franklin Park: 0358, 0359, 0366, 0367, 0378, 0386	Schiller Park: 0357, 0359, 0376, 0378
Glencoe: 0093, 0094, 0113, 0231, 0232, 0251	Skokie: 0234, 0242, 0244, 0253, 0295
Glenview: 0207, 0209, 0226, 0227, 0228, 0229, 0231, 0233, 0234, 0236, 0237, 0241	South Barrington: 0155, 0156, 0157, 0158, 0159, 0176, 0178
Glenwood: 0742, 0761, 0762, 0763, 0764	South Chicago Heights: 0807, 0826
Golf: 0233, 0234, 0241, 0242	South Holland: 0732, 0734, 0751, 0752, 0753, 0754
Harwood Heights: 0380, 0385	Steger: 0807, 0826, 0827
Hazel Crest: 0729, 0733, 0734, 0737	Stickney: 0483, 0484, 0491, 0503
Hickory Hills: 0601, 0602, 0603, 0604, 0606, 0608	Stone Park: 0367, 0369, 0386, 0388
Hillside: 0368, 0369, 0456, 0457	Streamwood: 0162, 0163, 0164, 0166, 0167, 0168, 0169, 0306
Hinsdale: 0458, 0466, 0467, 0468, 0469	Summit: 0487, 0489, 0491, 0495
Hodgkins: 0469, 0489, 0489, 0489, 0582, 0601	Thornton: 0734, 0742, 0753, 0761
Hoffman Estates: 0155, 0157, 0158, 0159, 0161, 0162, 0166, 0167, 0176, 0178, 0186, 0187, 0188, 0189, 0191, 0191, 0191	Tinley Park: 0702, 0703, 0704, 0706, 0707, 0708, 0709, 0711, 0712, 0716, 0717, 0718
Hometown: 0630	University Park: 0801
Homebrewery: 0729, 0733, 0734, 0737, 0741, 0742	Westchester: 0456, 0457, 0458, 0459, 0476
Indian Head Park: 0468, 0469	Western Springs: 0458, 0459, 0460, 0467, 0468, 0469
Inverness: 0020, 0038, 0039, 0157, 0176, 0177, 0178, 0179	Wheeling: 0064, 0066, 0068, 0072, 0206, 0207
Justice: 0488, 0489, 0601, 0602	Willow Springs: 0469, 0488, 0581, 0582, 0583, 0584, 0601
La Grange Park: 0459, 0476	Wilmette: 0234, 0253, 0255, 0260
La Grange: 0459, 0467	Winnetka: 0113, 0223, 0251, 0253, 0255
	Wood Dale: 0608, 0609, 0616, 0617



NOTES TO USER:

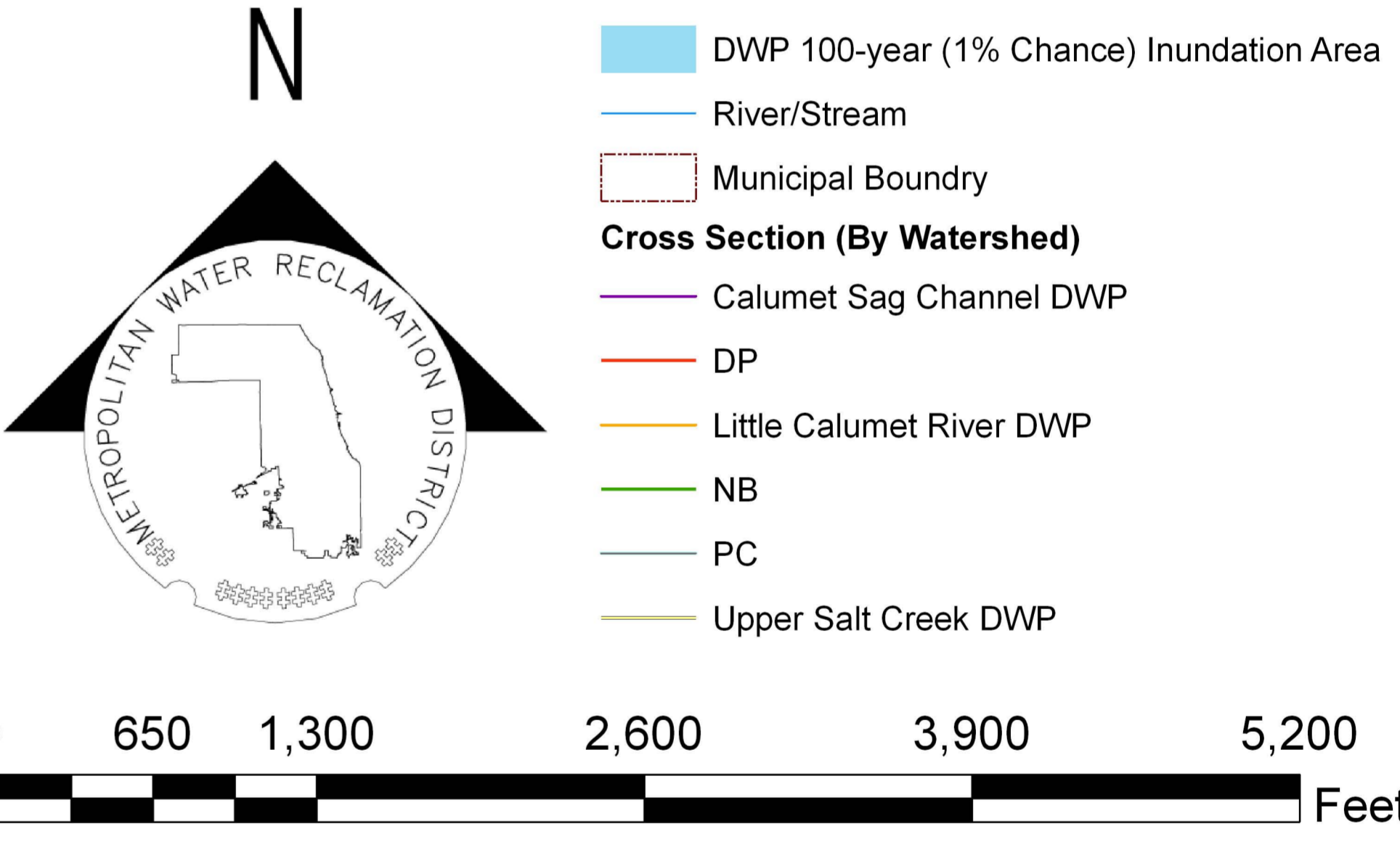
The inundation areas and water surface elevations shown on this map were developed as part of the Metropolitan Water Reclamation District of Greater Chicago's (MWRD) Stormwater Management Program. Specific details regarding the development of the new models used to generate the maps are described in MWRD's Detailed Watershed Plans, which are available for download at www.mwrdd.org. To access, click on "Services & Facilities" in the top navigation bar, click on "Stormwater Management", and then click on "Stormwater Annual Reports and Publications" on the left navigation bar of the Stormwater Management webpage.

This map does not delineate floodways. The information contained on this map is in addition to and does not substitute for the relevant Federal Emergency Management Agency's (FEMA) Flood Insurance Study (FIS) and associated Flood Insurance Rate Map (FIRM).

Elevations stated on this map are consistent with the North American Vertical Datum (NAVD) 1988. Flood elevations must be compared to ground structures referenced to the same datum. Hydraulic profiles of modeled waterways are available for download at www.mwrdd.org. To access, click on "Services & Facilities" in the top navigation bar, click on "Stormwater Management", and then click on "Inundation Maps & Profiles" on the left navigation bar of the Stormwater Management webpage.

The corporate limits shown on this map are based on the best information available at the time of study.

If you have questions on this map, please contact the MWRD's Engineering Department-Stormwater Management Section, at 312-751-5600, or via e-mail Stormwater@mwrdd.org.



Panel Index

	0015	0020	
0136	0155		0200
0144	0142		
0143	0101		
0168	0166	0196	0198
0164	0162		
0169	0167	0199	0197
0188	0186	0195	0193
0189	0187	0197	0195
0193	0191	0183	0181
0195	0193	0184	0182
0194	0192	0184	0182
0211	0211	0211	0211
0214	0212	0204	0202
0209	0207	0209	0207
0218	0216	0208	0206
0219	0217	0209	0207
0219	0217	0209	0207
0227	0225	0217	0215
0241	0241	0231	0231
0244	0244	0234	0234
0242	0242	0232	0232
0251	0251	0241	0241
0253	0253	0243	0243
0255	0255	0245	0245
0260	0260	0250	0250
0266	0266	0256	0256
0268	0268	0258	0258
0270	0270	0260	0260
0272	0272	0262	0262
0274	0274	0264	0264
0276	0276	0266	0266
0278	0278	0268	0268
0280	0280	0270	0270
0282	0282	0272	0272
0284	0284	0274	0274
0286	0286	0276	0276
0288	0288	0278	0278
0290	0290	0280	0280
0292	0292	0282	0282
0294	0294	0284	0284
0296	0296	0286	0286
0298	0298	0288	0288
0300	0300	0290	0290
0302	0302	0292	0292
0304	0304	0294	0294
0306	0306	0296	0296
0308	0308	0298	0298
0310	0310	0300	0300
0312	0312	0302	0302
0314	0314	0304	0304
0316	0316	0306	0306
0318	0318	0308	0308
0320	0320	0310	0310
0322	0322	0312	0312
0324	0324	0314	0314
0326	0326	0316	0316
0328	0328	0318	0318
0330	0330	0320	0320
0332	0332	0322	0322
0334	0334	0324	0324
0336	0336	0326	0326
0338	0338	0328	0328
0340	0340	0330	0330
0342	0342	0332	0332
0344	0344	0334	0334
0346	0346	0336	0336
0348	0348	0338	0338
0350	0350	0340	0340
0352	0352	0342	0342
0354	0354	0344	0344
0356	0356	0346	0346
0358	0358	0348	0348
0360	0360	0350	0350
0362	0362	0352	0352
0364	0364	0354	0354
0366	0366	0356	0356
0368	0368	0358	0358
0370	0370	0360	0360
0372	0372	0362	0362
0374	0374	0364	0364
0376	0376	0366	0366
0378	0378	0368	0368
0380	0380	0370	0370
0382	0382	0372	0372
0384	0384	0374	0374
0386	0386	0376	0376
0388	0388	0378	0378
0390	0390	0380	0380
0392	0392	0382	0382
0394	0394	0384	0384
0396	0396	0386	0386
0398	0398	0388	0388
0400	0400	0390	0390
0402	0402	0392	0392
0404	0404	0394	0394
0406	0406	0396	0396
0408	0408	0398	0398
0410	0410	0400	0400
0412	0412	0402	0402
0414	0414	0404	0404
0416	0416	0406	0406
0418	0418	0408	0408
0420	0420	0410	0410
0422	0422	0412	0412
0424	0424	0414	0414
0426	0426	0416	0416
0428	0428	0418	0418
0430	0430	0420	0420
0432	0432	0422	0422
0434	0434	0424	0424
0436	0436	0426	0426
0438	0438	0428	0428
0440	0440	0430	0430
0442	0442	0432	0432
0444	0444	0434	0434