

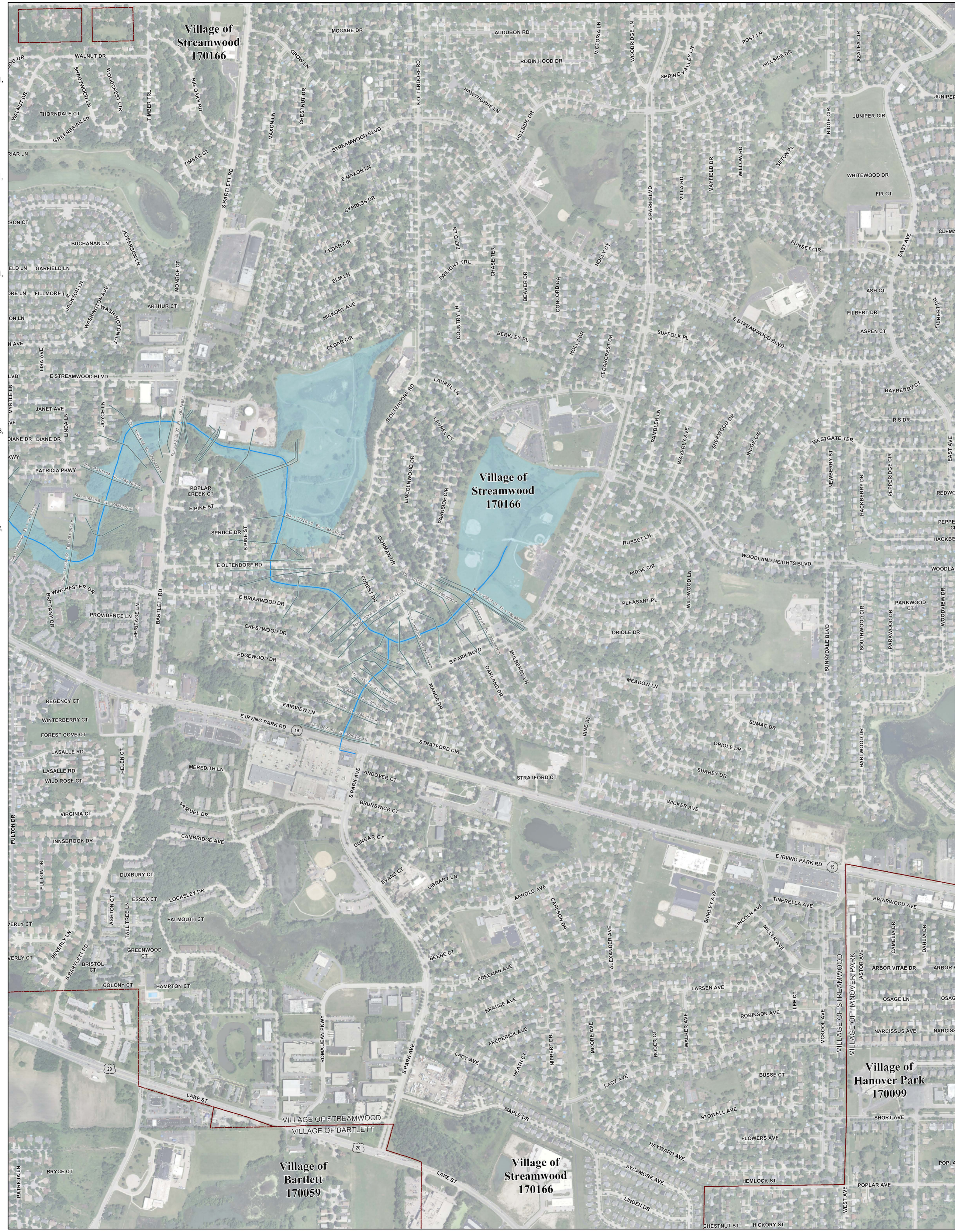
Municipality Index

Alsip: 0609, 0617, 0628, 0636, 0637, 0638, 0639	La Grange Park: 0478
Arlington Heights: 0044, 0063, 0064, 0162, 0184, 0192, 0201, 0202, 0203, 0204, 0211, 0212	La Grange: 0478, 0486
Barrington Hills: 0015, 0020, 0155, 0156, 0157	Lansing: 0754, 0756, 0758, 0759, 0762, 0766, 0767
Barrington: 0220, 0238	Lemont: 0567, 0569, 0579, 0583, 0586, 0587, 0588, 0589, 0591, 0593
Bartlett: 0144, 0163, 0164, 0168, 0285, 0305, 0306	Lincolnwood: 0244, 0265, 0382, 0401, 0402
Bedford Park: 0487, 0488, 0489, 0495, 0515, 0606	Lymwood: 0762, 0764, 0766, 0767, 0768, 0769, 0831, 0832
Bellwood: 0369, 0388, 0457, 0476	Lyons: 0479, 0483, 0487, 0491
Bensenville: 0358, 0359	Markham: 0726, 0727, 0729, 0731, 0732, 0733, 0734
Berkeley: 0368, 0369, 0456	Matteson: 0718, 0719, 0738, 0739, 0781, 0782, 0801, 0802
Berwyn: 0483, 0484, 0485	Maywood: 0388, 0389, 0476, 0477
Blue Island: 0637, 0639, 0643, 0644, 0645	Midlothian: 0619, 0638, 0639, 0707, 0726, 0727
Bridgeway: 0465, 0602, 0606, 0609	Morton Grove: 0237, 0241, 0242, 0243, 0244
Broadview: 0476, 0477	Mount Prospect: 0202, 0203, 0204, 0206, 0207, 0208, 0209, 0211, 0212, 0214, 0216
Brookfield: 0478, 0479, 0486, 0487	Niles: 0236, 0237, 0238, 0239, 0241, 0243, 0244
Buffalo Grove: 0653, 0664	Northbrook: 0276, 0277, 0278, 0279, 0282, 0283, 0284
Burbank: 0495, 0515, 0606, 0607, 0630	Northridge: 0476, 0477, 0479, 0483, 0485
Burnham: 0664, 0668, 0669	Northbrook: 0069, 0088, 0089, 0093, 0207, 0226, 0227, 0231, 0232
Burr Ridge: 0466, 0468, 0469, 0581, 0582	Chicago Ridge: 0606, 0607, 0608, 0609
Calumet City: 0664, 0668, 0669, 0752, 0754, 0756, 0757, 0758, 0759	Chicago: 0214, 0218, 0219, 0239, 0243, 0244, 0265, 0270, 0352
Calumet Park: 0643, 0644, 0645	0356, 0357, 0358, 0359, 0376, 0378, 0380, 0382, 0385, 0386, 0387
Chicago Heights: 0742, 0743, 0744, 0763, 0806, 0807, 0826	0395, 0401, 0402, 0403, 0404, 0410, 0415, 0416, 0417, 0418, 0419
Chicago Ridge: 0606, 0607, 0608, 0609	0438, 0440, 0484, 0485, 0491, 0492, 0495, 0503, 0504, 0505, 0506
Cicero: 0484, 0485, 0503, 0505	0507, 0508, 0519, 0520, 0526, 0528, 0529, 0540, 0545, 0528
Country Club Hills: 0728, 0729, 0736, 0737	0630, 0635, 0636, 0637, 0645, 0655, 0658, 0659, 0660, 0661, 0662
Countryside: 0467, 0469, 0486, 0488	0663, 0664, 0668, 0669, 0670
Crestwood: 0617, 0619, 0636, 0638, 0639	0670, 0671, 0672, 0673, 0704, 0706, 0711
Deerfield: 0069, 0088, 0089	0732, 0733, 0734, 0736, 0711
Des Plaines: 0208, 0209, 0212, 0214, 0216, 0217, 0218, 0219, 0236, 0238, 0357, 0376	0732, 0733, 0734, 0736, 0711
Dolton: 0644, 0663, 0664, 0732, 0751, 0752	0732, 0733, 0734, 0736, 0711
East Dundee: 0155	0732, 0733, 0734, 0736, 0711
East Hazel Crest: 0733, 0734	0732, 0733, 0734, 0736, 0711
Elgin: 0135, 0142, 0144, 0155, 0161, 0163, 0305	0732, 0733, 0734, 0736, 0711
Elk Grove Village: 0193, 0194, 0211, 0213, 0214, 0218, 0331, 0332, 0351, 0352	0732, 0733, 0734, 0736, 0711
Elmhurst: 0456	0732, 0733, 0734, 0736, 0711
Elmwood Park: 0380, 0387, 0395	0732, 0733, 0734, 0736, 0711
Evanston: 0253, 0255, 0260, 0265, 0270	0732, 0733, 0734, 0736, 0711
Evergreen Park: 0628, 0630, 0635	0732, 0733, 0734, 0736, 0711
Flossmoor: 0737, 0739, 0741, 0742, 0743, 0744	0732, 0733, 0734, 0736, 0711
Ford Heights: 0763, 0764, 0768, 0826, 0827	0732, 0733, 0734, 0736, 0711
Forest Park: 0389, 0395, 0477, 0485	0732, 0733, 0734, 0736, 0711
Forest View: 0484, 0491, 0492	0732, 0733, 0734, 0736, 0711
Frankfort: 0781, 0782	0732, 0733, 0734, 0736, 0711
Franklin Park: 0358, 0359, 0366, 0367, 0378, 0386	0732, 0733, 0734, 0736, 0711
Glenview: 0093, 0094, 0113, 0231, 0232, 0251	0732, 0733, 0734, 0736, 0711
Glenview: 0207, 0209, 0226, 0227, 0228, 0229, 0231, 0233, 0234, 0236, 0237, 0241	0732, 0733, 0734, 0736, 0711
Glenwood: 0742, 0761, 0762, 0763, 0764	0732, 0733, 0734, 0736, 0711
Golf: 0233, 0234, 0241, 0242	0732, 0733, 0734, 0736, 0711
Hanover Park: 0168, 0169, 0306, 0307	0732, 0733, 0734, 0736, 0711
Harvey: 0643, 0644, 0731, 0732, 0734, 0751	0732, 0733, 0734, 0736, 0711
Harwood Heights: 0380, 0385	0732, 0733, 0734, 0736, 0711
Hazel Crest: 0729, 0733, 0734, 0737	0732, 0733, 0734, 0736, 0711
Hickory Hills: 0601, 0602, 0603, 0604, 0606, 0608	0732, 0733, 0734, 0736, 0711
Hillside: 0368, 0369, 0456, 0457	0732, 0733, 0734, 0736, 0711
Hinsdale: 0458, 0466, 0467, 0468, 0469	0732, 0733, 0734, 0736, 0711
Hodgkins: 0469, 0486, 0487, 0488, 0489, 0502, 0601	0732, 0733, 0734, 0736, 0711
Hoffman Estates: 0155, 0157, 0158, 0159, 0161, 0162, 0166, 0167, 0176, 0178, 0179, 0186, 0187, 0188, 0189, 0191	0732, 0733, 0734, 0736, 0711
Homewood: 0630	0732, 0733, 0734, 0736, 0711
Homewood: 0729, 0733, 0734, 0737, 0741, 0742	0732, 0733, 0734, 0736, 0711
Indian Head Park: 0468, 0469	0732, 0733, 0734, 0736, 0711
Inverness: 0020, 0038, 0039, 0157, 0176, 0177, 0178, 0179	0732, 0733, 0734, 0736, 0711
Justice: 0488, 0489, 0601, 0602	0732, 0733, 0734, 0736, 0711
Kennilworth: 0253, 0255	0732, 0733, 0734, 0736, 0711
La Grange Park: 0459, 0476	0732, 0733, 0734, 0736, 0711
La Grange: 0459, 0467	0732, 0733, 0734, 0736, 0711

Panel Index

0015	0020				
0136	0155	0156	0158	0159	0160
0161	0162	0163	0164	0165	0166
0167	0168	0169	0170	0171	0172
0173	0174	0175	0176	0177	0178
0179	0180	0181	0182	0183	0184
0185	0186	0187	0188	0189	0190
0191	0192	0193	0194	0195	0196
0197	0198	0199	0200	0201	0202
0203	0204	0205	0206	0207	0208
0209	0210	0211	0212	0213	0214
0215	0216	0217	0218	0219	0220
0221	0222	0223	0224	0225	0226
0227	0228	0229	0230	0231	0232
0233	0234	0235	0236	0237	0238
0239	0240	0241	0242	0243	0244
0245	0246	0247	0248	0249	0250
0251	0252	0253	0254	0255	0256
0257	0258	0259	0260	0261	0262
0263	0264	0265	0266	0267	0268
0269	0270	0271	0272	0273	0274
0275	0276	0277	0278	0279	0280
0281	0282	0283	0284	0285	0286
0287	0288	0289	0290	0291	0292
0293	0294	0295	0296	0297	0298
0299	0300	0301	0302	0303	0304
0305	0306	0307	0308	0309	0310
0311	0312	0313	0314	0315	0316
0317	0318	0319	0320	0321	0322
0323	0324	0325	0326	0327	0328
0329	0330	0331	0332	0333	0334
0335	0336	0337	0338	0339	0340
0341	0342	0343	0344	0345	0346
0347	0348	0349	0350	0351	0352
0353	0354	0355	0356	0357	0358
0359	0360	0361	0362	0363	0364
0365	0366	0367	0368	0369	0370
0371	0372	0373	0374	0375	0376
0377	0378	0379	0380	0381	0382
0383	0384	0385	0386	0387	0388
0389	0390	0391	0392	0393	0394
0395	0396	0397	0398	0399	0400

Not available. Contact MWRD for further information



NOTES TO USER:

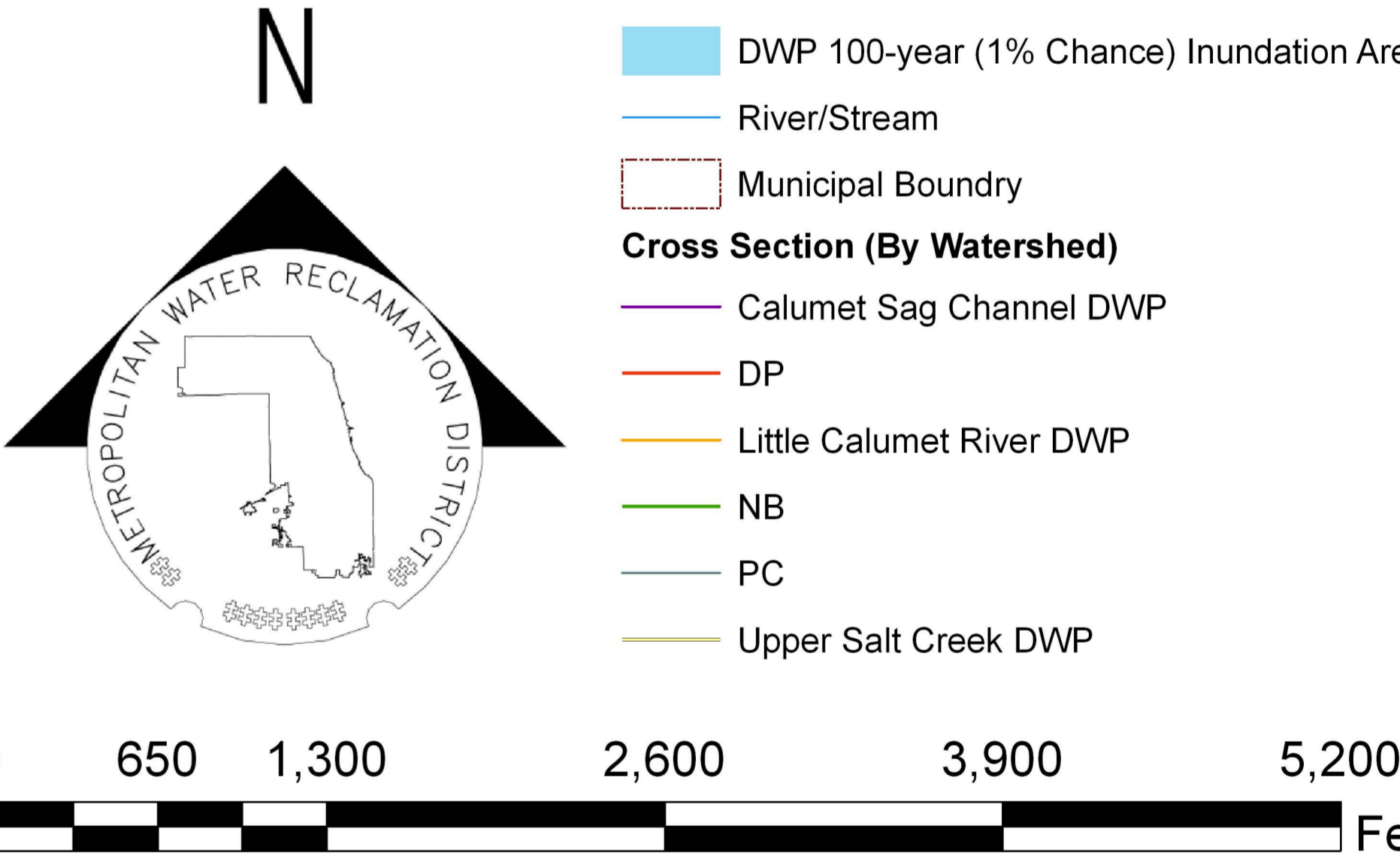
The inundation areas and water surface elevations shown on this map were developed as part of the Metropolitan Water Reclamation District of Greater Chicago's (MWRD) Stormwater Management Program. Specific details regarding the development of the new models used to generate the maps are described in MWRD's Detailed Watershed Plans, which are available for download at www.mwrdd.org. To access, click on "Services & Facilities" in the top navigation bar, click on "Stormwater Management", and then click on "Stormwater Annual Reports and Publications" on the left navigation bar of the Stormwater Management webpage.

This map does not delineate floodways. The information contained on this map is in addition to and does not substitute for the relevant Federal Emergency Management Agency's (FEMA) Flood Insurance Study (FIS) and associated Flood Insurance Rate Map (FIRM).

Elevations stated on this map are consistent with the North American Vertical Datum (NAVD) 1988. Flood elevations must be compared to ground structures referenced to the same datum. Hydraulic profiles of modeled waterways are available for download at www.mwrdd.org. To access, click on "Services & Facilities" in the top navigation bar, click on "Stormwater Management", and then click on "Inundation Maps & Profiles" on the left navigation bar of the Stormwater Management webpage.

The corporate limits shown on this map are based on the best information available at the time of study.

If you have questions on this map, please contact the MWRD's Engineering Department-Stormwater Management Section, at 312-751-5600, or via e-mail Stormwater@mwrdd.org.



Protecting Our Water Environment

Metropolitan Water Reclamation District of Greater Chicago

Cook County Inundation Map

Panel 0168

The area depicted in this map corresponds to FEMA's DFIRM Panel: 17031C0168J