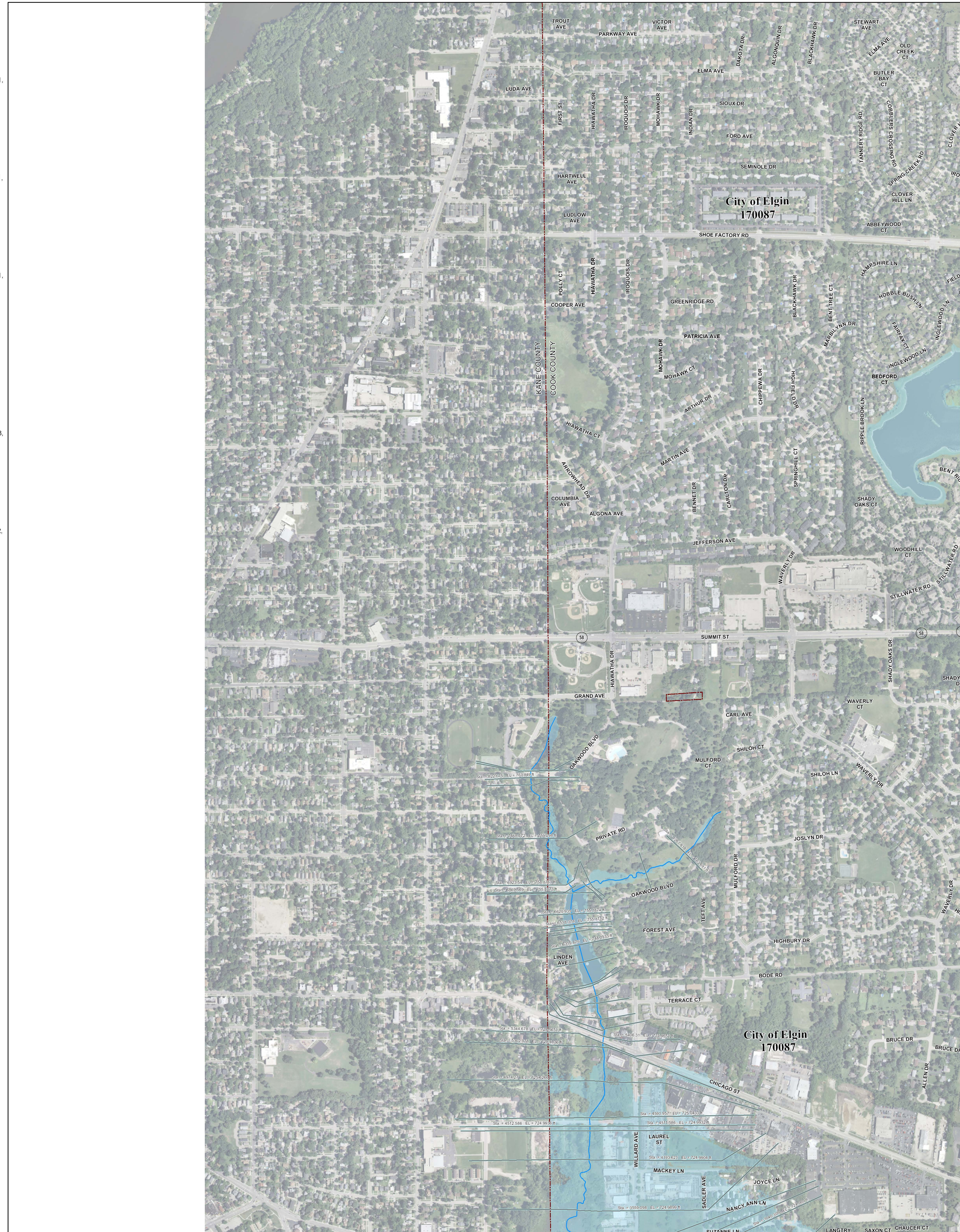


# Municipality Index

Arling: 0609, 0617, 0628, 0636, 0637, 0638, 0639	La Grange Park: 0478
Arlington Heights: 0044, 0063, 0064, 0162, 0184, 0192, 0201, 0202, 0203, 0204, 0211, 0212	La Grange: 0478, 0486
Barrington Hills: 0015, 0020, 0155, 0156, 0157	Lansing: 0754, 0756, 0758, 0759, 0762, 0766, 0767
Barrington: 0020, 0038	Lemont: 0567, 0569, 0579, 0583, 0586, 0587, 0588, 0589, 0591, 0593
Bartlett: 0144, 0163, 0164, 0168, 0285, 0305, 0306	Lincolnwood: 0244, 0265, 0382, 0401, 0402
Bedford Park: 0487, 0488, 0489, 0495, 0515, 0606	Lymwood: 0762, 0764, 0766, 0767, 0768, 0769, 0831, 0832
Bellwood: 0369, 0388, 0457, 0476	Lyons: 0479, 0483, 0487, 0491
Bensenville: 0336, 0346	Markham: 0726, 0727, 0729, 0731, 0732, 0733, 0734
Berkeley: 0368, 0369, 0456	Matteoson: 0718, 0719, 0738, 0739, 0781, 0782, 0801, 0802
Berwyn: 0483, 0484, 0485	Maywood: 0388, 0389, 0476, 0477
Blue Island: 0637, 0639, 0643, 0644, 0645	Mc Cook: 0486, 0487, 0491
Bridgeway: 0489, 0495, 0602, 0606, 0609	Melrose Park: 0367, 0369, 0386, 0387, 0388, 0389
Broadview: 0476, 0477	Merrionette Park: 0630, 0637
Brookfield: 0478, 0479, 0486, 0487	Midlothian: 0619, 0638, 0639, 0707, 0726, 0727
Buffalo Grove: 0663, 0664	Morton Grove: 0237, 0241, 0242, 0243, 0244
Burbank: 0495, 0515, 0606, 0607, 0630	Mount Prospect: 0202, 0203, 0204, 0206, 0207, 0208, 0209, 0211, 0212, 0214, 0216
Burnham: 0664, 0668, 0669	Niles: 0236, 0237, 0238, 0239, 0241, 0243, 0244
Burr Ridge: 0466, 0468, 0469, 0681, 0682	Northridge: 0376, 0378, 0380, 0385
Calumet City: 0664, 0668, 0669, 0752, 0754, 0756, 0757, 0758, 0759	North Riverside: 0476, 0477, 0479, 0483, 0485
Calumet Park: 0643, 0644, 0645	Northbrook: 0069, 0088, 0089, 0093, 0207, 0226, 0227, 0231, 0232
Chicago Heights: 0742, 0743, 0744, 0763, 0806, 0807, 0826	Northfield: 0231, 0232, 0233, 0234
Chicago Ridge: 0606, 0607, 0608, 0609	Northlake: 0366, 0367, 0368, 0369
Chicago: 0214, 0218, 0219, 0239, 0243, 0244, 0265, 0270, 0352, 0356, 0357, 0358, 0359, 0376, 0378, 0380, 0382, 0385, 0386, 0387, 0395, 0401, 0402, 0403, 0404, 0410, 0415, 0416, 0417, 0418, 0419, 0438, 0440, 0484, 0485, 0491, 0492, 0495, 0503, 0504, 0505, 0506, 0507, 0508, 0519, 0520, 0526, 0528, 0529, 0540, 0545, 0628, 0630, 0635, 0636, 0637, 0645, 0655, 0658, 0659, 0660, 0661, 0662, 0663, 0664, 0668, 0669, 0670	Oak Forest: 0618, 0619, 0706, 0707, 0709, 0726, 0727, 0728, 0729
Cicero: 0484, 0485, 0503, 0505	Oak Lawn: 0606, 0607, 0608, 0609, 0617, 0628, 0630
Country Club Hills: 0728, 0729, 0736, 0737	Oak Park: 0395, 0495
Countryside: 0467, 0469, 0486, 0488	Olympia Fields: 0739, 0743
Crestwood: 0617, 0619, 0636, 0638, 0639	Orland Hills: 0701, 0702, 0703, 0704
Deer Park: 0338, 0339, 0343	Orland Park: 0593, 0594, 0613, 0614, 0618, 0682, 0684, 0692, 0701, 0702, 0703, 0704, 0706, 0711
Deerfield: 0069, 0088, 0089	Palatine: 0038, 0039, 0043, 0044, 0177, 0179, 0181, 0182, 0183
Des Plaines: 0208, 0209, 0212, 0214, 0216, 0217, 0218, 0219, 0236, 0238, 0357, 0376	Palos Heights: 0612, 0614, 0616, 0617, 0618, 0619
Dimmo: 0643, 0644, 0731	Palos Hills: 0603, 0604, 0608, 0611, 0612, 0616
Dolton: 0644, 0663, 0664, 0732, 0751, 0752	Palos Park: 0592, 0594, 0611, 0612, 0613, 0614, 0616
East Dundee: 0155	Park Forest: 0739, 0743, 0802, 0806, 0807
East Hazel Crest: 0733, 0734	Park Ridge: 0236, 0237, 0238, 0239, 0376, 0380
Elgin: 0135, 0142, 0144, 0155, 0161, 0163, 0305	Phoenix: 0732, 0751
Elk Grove Village: 0193, 0194, 0211, 0213, 0214, 0218, 0331, 0332, 0351, 0352	Posen: 0639, 0643, 0727, 0731
Elmhurst: 0456	Prospect Heights: 0201, 0202, 0206, 0207, 0208
Elmwood Park: 0380, 0387, 0395	Richton Park: 0781, 0782, 0801, 0802
Evanston: 0253, 0255, 0260, 0265, 0270	River Forest: 0307, 0309, 0395
Evergreen Park: 0628, 0630, 0635	River Grove: 0380, 0386, 0387
Flossmoor: 0737, 0739, 0741, 0742, 0743, 0744	Riverside: 0479, 0483
Ford Heights: 0763, 0764, 0768, 0826, 0827	Robbins: 0638, 0639
Forest Park: 0389, 0395, 0477, 0485	Rolling Meadows: 0179, 0181, 0182, 0183, 0184, 0191, 0192, 0211
Forest View: 0484, 0491, 0492	Roselle: 0193, 0330, 0331
Frankfort: 0781, 0782	Rosemont: 0219, 0357, 0376
Franklin Park: 0358, 0359, 0366, 0367, 0378, 0386	Sauk Village: 0754, 0769, 0826, 0827, 0831
Glencoe: 0093, 0094, 0113, 0231, 0232, 0251	Schaumburg: 0167, 0169, 0179, 0183, 0184, 0186, 0187, 0188, 0189, 0191, 0192, 0193, 0194, 0307, 0330
Glenview: 0207, 0209, 0226, 0227, 0228, 0229, 0231, 0233, 0234, 0236, 0237, 0241	Schiller Park: 0357, 0359, 0376, 0378
Glenwood: 0742, 0761, 0762, 0763, 0764	Skokie: 0234, 0242, 0244, 0253, 0265
Golf: 0233, 0234, 0241, 0242	South Barrington: 0155, 0156, 0157, 0158, 0159, 0176, 0178
Harwood Heights: 0380, 0385	South Chicago Heights: 0807, 0826
Hazel Crest: 0729, 0733, 0734, 0737	South Holland: 0732, 0734, 0751, 0752, 0753, 0754
Hickory Hills: 0601, 0602, 0603, 0604, 0606, 0608	Steger: 0807, 0826, 0827
Hillside: 0368, 0369, 0456, 0457	Stickney: 0483, 0484, 0491, 0503
Hinsdale: 0458, 0466, 0467, 0468, 0469	Stone Park: 0367, 0369, 0386, 0388
Hodgkins: 0469, 0486, 0487, 0488, 0489, 0582, 0601	Streamwood: 0162, 0163, 0164, 0166, 0167, 0168, 0169, 0306
Hoffman Estates: 0155, 0157, 0158, 0159, 0161, 0162, 0166, 0167, 0176, 0178, 0179, 0186, 0187, 0188, 0189, 0191	Summit: 0487, 0489, 0491, 0495
Homewood: 0630	Thornton: 0734, 0742, 0753, 0761
Homewood: 0729, 0733, 0734, 0737, 0741, 0742	Tinley Park: 0702, 0703, 0704, 0706, 0707, 0708, 0709, 0711, 0712, 0716, 0717, 0719
Indian Head Park: 0468, 0469	University Park: 0801
Inverness: 0020, 0038, 0039, 0157, 0176, 0177, 0178, 0179	Westchester: 0456, 0457, 0458, 0459, 0476
Justice: 0488, 0489, 0601, 0602	Western Springs: 0458, 0459, 0460, 0467, 0468, 0469
Kenilworth: 0253, 0255	Wheeling: 0054, 0058, 0059, 0202, 0206, 0207
La Grange Park: 0459, 0476	Willow Springs: 0469, 0488, 0581, 0582, 0583, 0584, 0601
La Grange: 0459, 0467	Wilmette: 0234, 0253, 0255, 0260
	Wilmota: 0113, 0232, 0251, 0253, 0255
	Worth: 0608, 0609, 0616, 0617



# NOTES TO USER:

The inundation areas and water surface elevations shown on this map were developed as part of the Metropolitan Water Reclamation District of Greater Chicago's (MWRD) Stormwater Management Program. Specific details regarding the development of the new models used to generate the maps are described in MWRD's Detailed Watershed Plans, which are available for download at [www.mwrdd.org](http://www.mwrdd.org). To access, click on "Services & Facilities" in the top navigation bar, click on "Stormwater Management", and then click on "Stormwater Annual Reports and Publications" on the left navigation bar of the Stormwater Management webpage.

This map does not delineate floodways. The information contained on this map is in addition to and does not substitute for the relevant Federal Emergency Management Agency's (FEMA) Flood Insurance Study (FIS) and associated Flood Insurance Rate Map (FIRM).

Elevations stated on this map are consistent with the North American Vertical Datum (NAVD) 1988. Flood elevations must be compared to ground structures referenced to the same datum. Hydraulic profiles of modeled waterways are available for download at [www.mwrdd.org](http://www.mwrdd.org). To access, click on "Services & Facilities" in the top navigation bar, click on "Stormwater Management", and then click on "Inundation Maps & Profiles" on the left navigation bar of the Stormwater Management webpage.

The corporate limits shown on this map are based on the best information available at the time of study.

If you have questions on this map, please contact the MWRD's Engineering Department-Stormwater Management Section, at 312-751-5600, or via e-mail [Stormwater@mwrdd.org](mailto:Stormwater@mwrdd.org).

# Panel Index

	0015	0020	
0136	0155	0200	
0144	0161	0205	
0163	0182	0210	
0168	0186	0215	
0169	0187	0220	
0188	0196	0225	
0189	0197	0230	
0193	0198	0235	
0194	0199	0240	
0201	0206	0245	
0202	0207	0250	
0203	0208	0255	
0204	0209	0260	
0205	0210	0265	
0206	0211	0270	
0207	0212	0275	
0208	0213	0280	
0209	0214	0285	
0210	0215	0290	
0211	0216	0295	
0212	0217	0300	
0213	0218	0305	
0214	0219	0310	
0215	0220	0315	
0216	0221	0320	
0217	0222	0325	
0218	0223	0330	
0219	0224	0335	
0220	0225	0340	
0221	0226	0345	
0222	0227	0350	
0223	0228	0355	
0224	0229	0360	
0225	0230	0365	
0226	0231	0370	
0227	0232	0375	
0228	0233	0380	
0229	0234	0385	
0230	0235	0390	
0231	0236	0395	
0232	0237	0400	
0233	0238	0405	
0234	0239	0410	
0235	0240	0415	
0236	0241	0420	
0237	0242	0425	
0238	0243	0430	
0239	0244	0435	
0240	0245	0440	
0241	0246	0445	
0242	0247	0450	
0243	0248	0455	
0244	0249	0460	
0245	0250	0465	
0246	0251	0470	
0247	0252	0475	
0248	0253	0480	
0249	0254	0485	
0250	0255	0490	
0251	0256	0495	
0252	0257	0500	
0253	0258	0505	
0254	0259	0510	
0255	0260	0515	
0256	0261	0520	
0257	0262	0525	
0258	0263	0530	
0259	0264	0535	
0260	0265	0540	
0261	0266	0545	
0262	0267	0550	
0263	0268	0555	
0264	0269	0560	
0265	0270	0565	
0266	0271	0570	
0267	0272	0575	
0268	0273	0580	
0269	0274	0585	
0270	0275	0590	
0271	0276	0595	
0272	0277	0600	
0273	0278	0605	
0274	0279	0610	
0275	0280	0615	
0276	0281	0620	
0277	0282	0625	
0278	0283	0630	
0279	0284	0635	
0280	0285	0640	
0281	0286	0645	
0282	0287	0650	
0283	0288	0655	
0284	0289	0660	
0285	0290	0665	
0286	0291	0670	
0287	0292	0675	
0288	0293	0680	
0289	0294	0685	
0290	0295	0690	
0291	0296	0695	
0292	0297	0700	
0293	0298	0705	
0294	0299	0710	
0295	0300	0715	
0296	0301	0720	
0297	0302	0725	
0298	0303	0730	
0299	0304	0735	
0300	0305	0740	
0301	0306	0745	
0302	0307	0750	
0303	0308	0755	
0304	0309	0760	
0305	0310	0765	
0306	0311	0770	
0307	0312	0775	
0308	0313	0780	
0309	0314	0785	
0310	0315	0790	
0311	0316	0795	
0312	0317	0800	
0313	0318	0805	
0314	0319	0810	
0315	0320	0815	
0316	0321	0820	
0317	0322	0825	
0318	0323	0830	
0319	0324	0835	
0320	0325	0840	
0321	0326	0845	