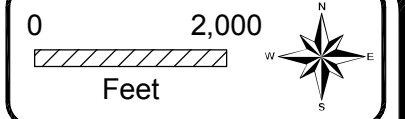


McHenry County

Lake County

FCBH-3



LEGEND

- Problem Types**
- Regional**
 - Bank Erosion
 - Overbank flooding
 - Pavement flooding
 - Water Quality/Poor Habitat
- Local**
 - Pavement flooding
 - Storm Sewer Flow Restriction
 - Water Quality/Poor Habitat
 - Problem Area Identified Through Modeling
 - Alternative Location
- DWP 100-year Inundation Area
- FEMA Floodplain**
 - ZONE A, AH, and AO
 - ZONE AE
- Poplar Creek Watershed Boundary
- Flint Creek Watershed Boundary
- Spring Creek Watershed Boundary
- Brewster Creek Watershed Boundary
- West Branch Dupage River Watershed Boundary
- Subbasins
- River / Stream
- Freeway Non-Interstate
- Interstate
- Minor Arterial (Urban)
- Other Principal Arterial
- Municipal Boundaries
- County Boundaries

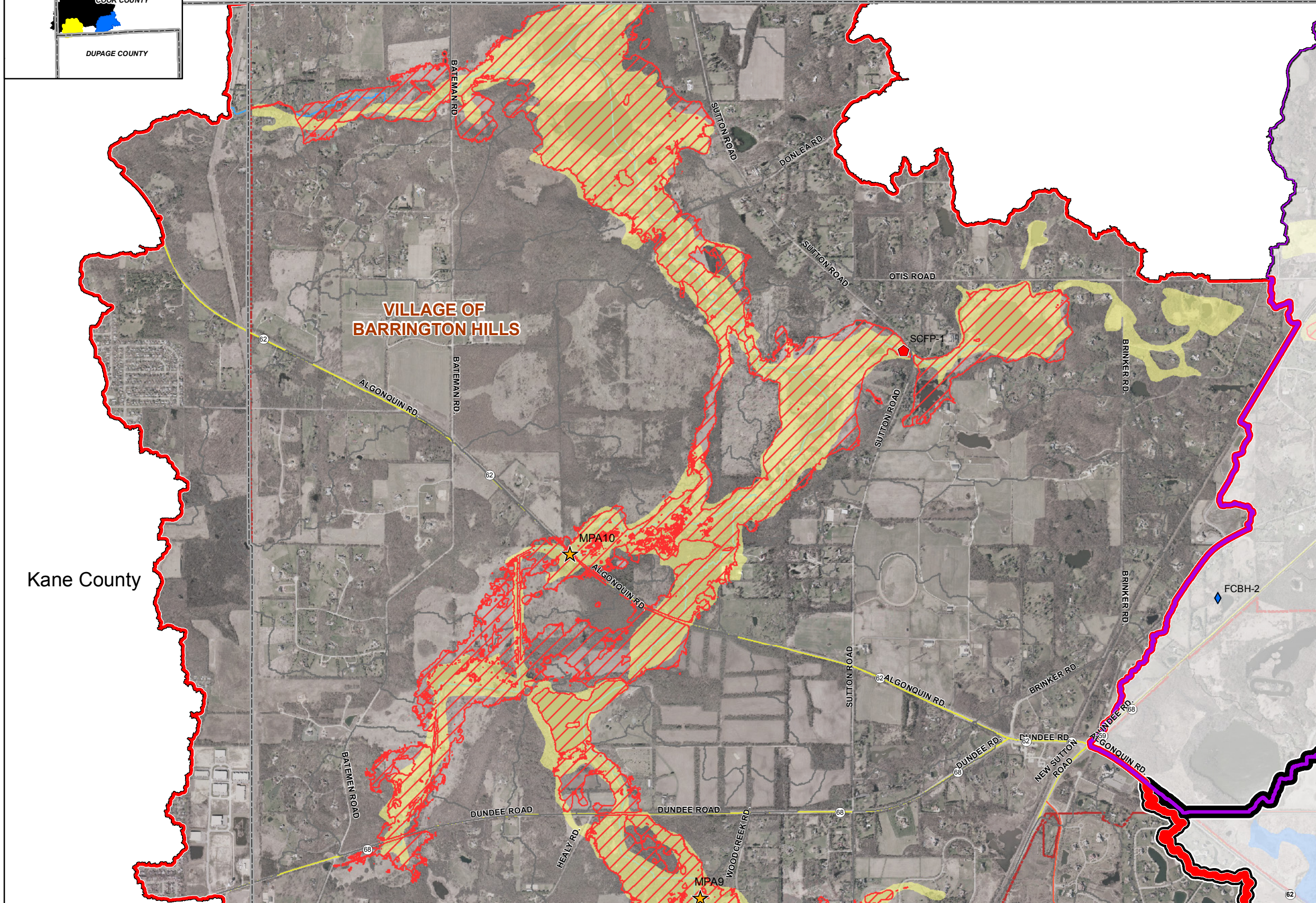
Hey and Associates, Inc.
Water Resources, Wetlands and Ecology

6321 N. AVONDALE AVENUE, SUITE A-211
CHICAGO, IL 60631
PHONE: (773) 792-8510
FAX: (773) 792-8512

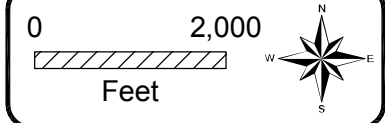
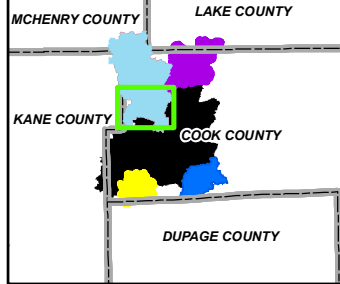
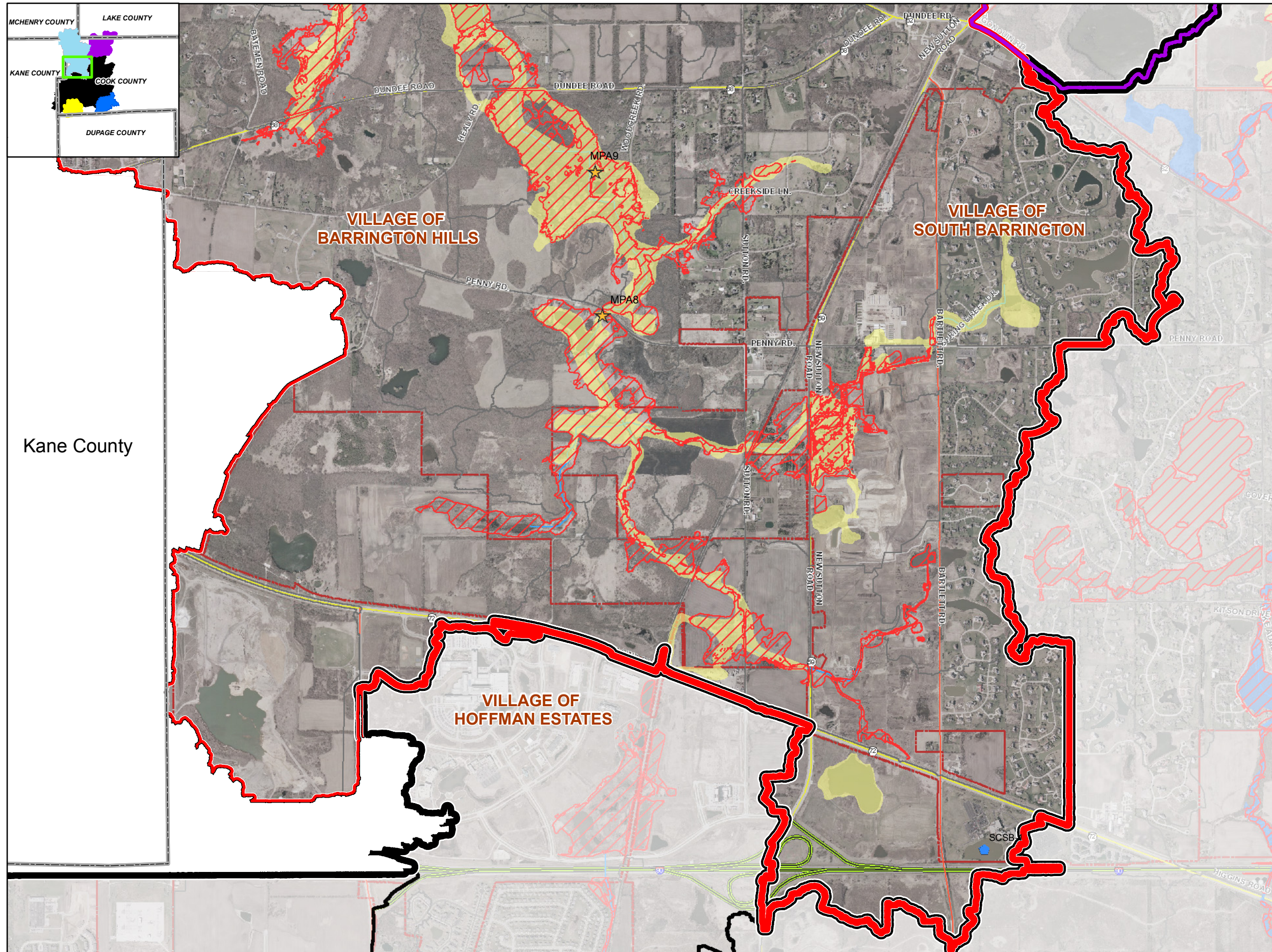
Poplar Creek
Watershed Study Area
Detailed Watershed Plan

Spring Creek
Overview (1 of 2)

Figure 3.10.1



Kane County



LEGEND	
Problem Types	
Regional	
[Red outline]	Bank Erosion
[Red circle]	Overbank flooding
[Red diamond]	Pavement flooding
[Red triangle]	Water Quality/Poor Habitat
Local	
[Blue diamond]	Pavement flooding
[Blue diamond]	Storm Sewer Flow Restriction
[Blue triangle]	Water Quality/Poor Habitat
[Yellow star]	Problem Area Identified Through Modeling
[Green cross]	Alternative Location
[Red outline]	DWP 100-year Inundation Area
FEMA Floodplain	
[Yellow fill]	ZONE A, AH, and AO
[Blue fill]	ZONE AE
[Black outline]	Poplar Creek Watershed Boundary
[Purple outline]	Flint Creek Watershed Boundary
[Red outline]	Spring Creek Watershed Boundary
[Yellow outline]	Brewster Creek Watershed Boundary
[Blue outline]	West Branch Dupage River Watershed Boundary
[Grey outline]	Subbasins
[Blue line]	River / Stream
[Green line]	Freeway Non-Interstate
[Green line]	Interstate
[Red line]	Minor Arterial (Urban)
[Yellow line]	Other Principal Arterial
[Red dashed line]	Municipal Boundaries
[Grey dashed line]	County Boundaries

Hey and Associates, Inc.
 Water Resources, Wetlands and Ecology
 6321 N. AVONDALE AVENUE, SUITE A-211
 CHICAGO, IL 60631
 PHONE: (773) 792-8510
 FAX: (773) 792-8512

Poplar Creek
 Watershed Study Area
 Detailed Watershed Plan

Spring Creek
 Overview (2 of 2)

Figure 3.10.1