

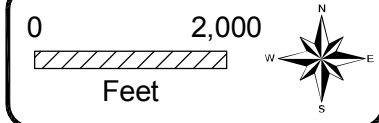
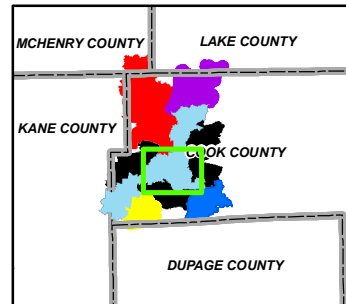
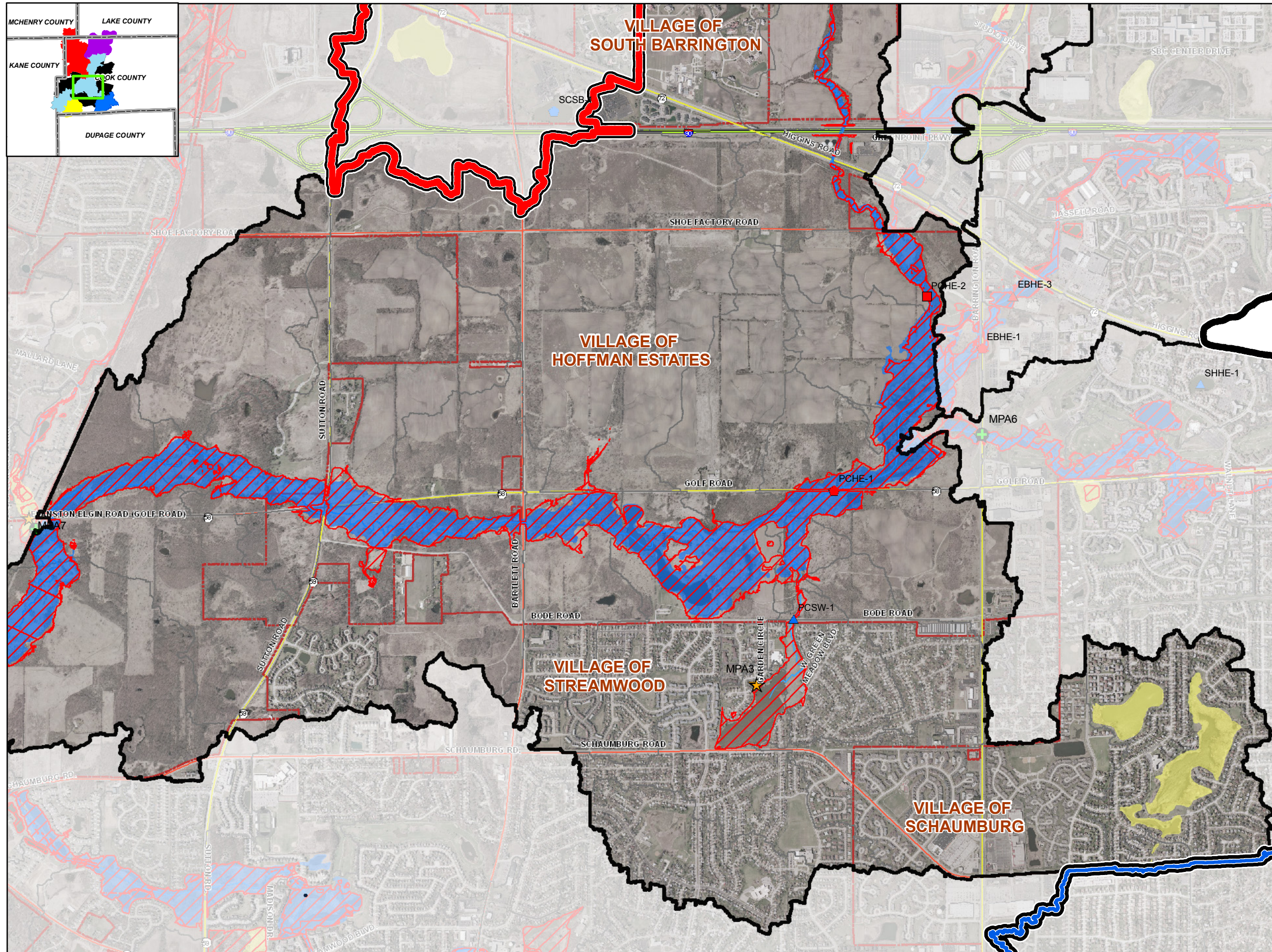
LEGEND	
Problem Types	
Regional	
[Red square]	Bank Erosion
[Red circle]	Overbank flooding
[Red pentagon]	Pavement flooding
[Red triangle]	Water Quality/Poor Habitat
Local	
[Blue pentagon]	Pavement flooding
[Blue diamond]	Storm Sewer Flow Restriction
[Blue triangle]	Water Quality/Poor Habitat
[Yellow star]	Problem Area Identified Through Modeling
[Green cross]	Alternative Location
[Red dashed line]	DWP 100-year Inundation Area
FEMA Floodplain	
[Yellow fill]	ZONE A, AH, and AO
[Blue fill]	ZONE AE
[Black outline]	Poplar Creek Watershed Boundary
[Purple outline]	Flint Creek Watershed Boundary
[Red outline]	Spring Creek Watershed Boundary
[Yellow outline]	Brewster Creek Watershed Boundary
[Blue outline]	West Branch Dupage River Watershed Boundary
[Grey outline]	Subbasins
[Blue line]	River / Stream
[Green line]	Freeway Non-Interstate
[Red line]	Interstate
[Orange line]	Minor Arterial (Urban)
[Yellow line]	Other Principal Arterial
[Red dashed line]	Municipal Boundaries
[Grey dashed line]	County Boundaries

Hey and Associates, Inc.
 Water Resources, Wetlands and Ecology
 6321 N. AVONDALE AVENUE, SUITE A-211
 CHICAGO, IL 60631
 PHONE: (773) 792-8510
 FAX: (773) 792-8512

Poplar Creek
 Watershed Study Area
 Detailed Watershed Plan

Poplar Creek Mainstem
 Overview (1 of 3)

Figure 3.1.1



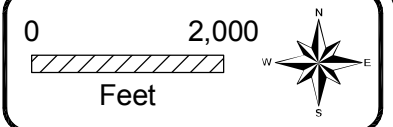
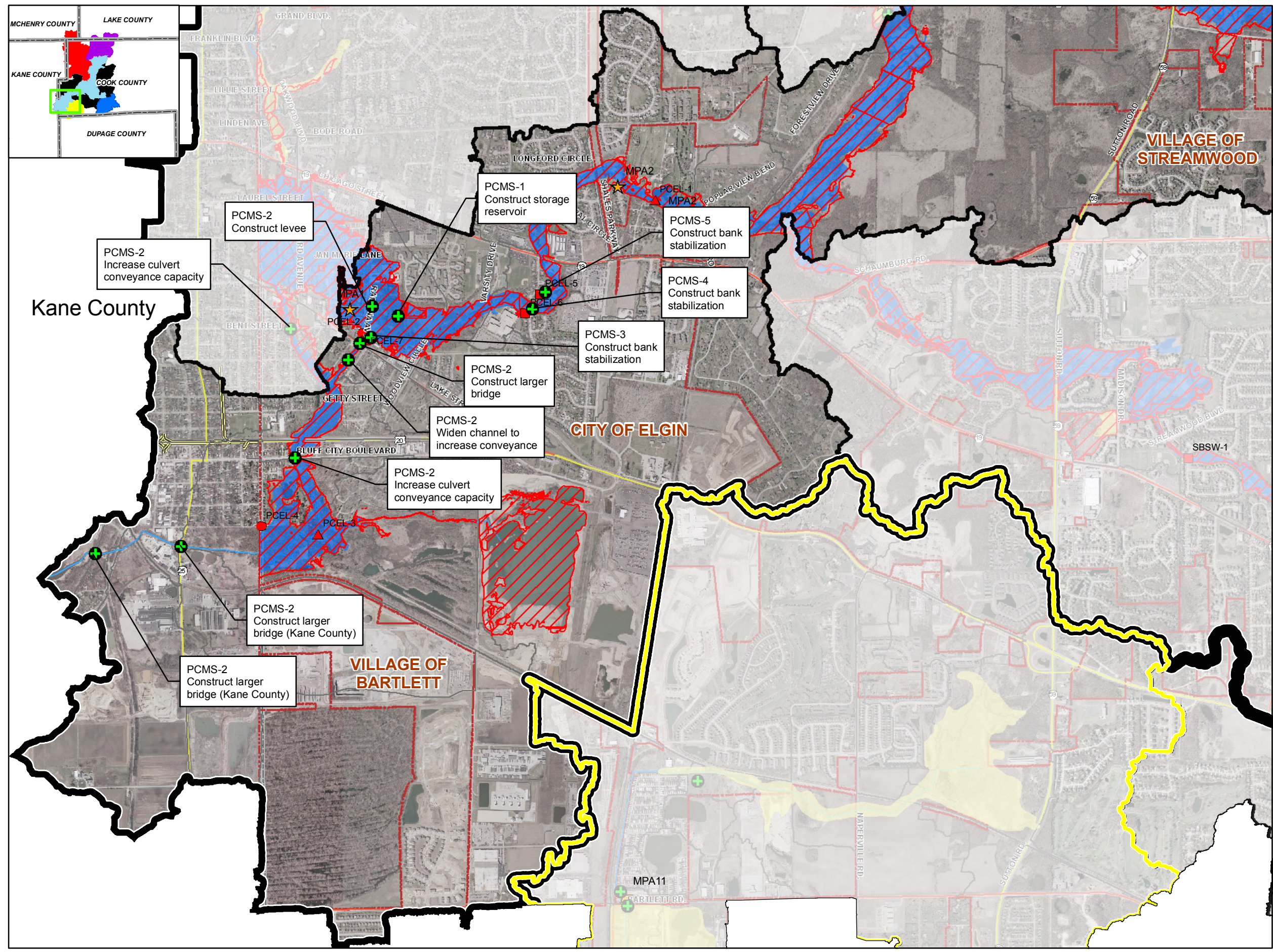
LEGEND	
Problem Types	
Regional	
[Red outline]	Bank Erosion
[Red circle]	Overbank flooding
[Red pentagon]	Pavement flooding
[Red triangle]	Water Quality/Poor Habitat
Local	
[Blue pentagon]	Pavement flooding
[Blue diamond]	Storm Sewer Flow Restriction
[Blue triangle]	Water Quality/Poor Habitat
[Yellow star]	Problem Area Identified Through Modeling
[Green cross]	Alternative Location
[Red outline]	DWP 100-year Inundation Area
FEMA Floodplain	
[Yellow fill]	ZONE A, AH, and AO
[Blue fill]	ZONE AE
[Black outline]	Poplar Creek Watershed Boundary
[Purple outline]	Flint Creek Watershed Boundary
[Red outline]	Spring Creek Watershed Boundary
[Yellow outline]	Brewster Creek Watershed Boundary
[Blue outline]	West Branch Dupage River Watershed Boundary
[Grey outline]	Subbasins
[Blue line]	River / Stream
[Green line]	Freeway Non-Interstate
[Yellow line]	Interstate
[Red line]	Minor Arterial (Urban)
[Yellow line]	Other Principal Arterial
[Red dashed line]	Municipal Boundaries
[Grey dashed line]	County Boundaries

Hey and Associates, Inc.
 Water Resources, Wetlands and Ecology
 6321 N. AVONDALE AVENUE, SUITE A-211
 CHICAGO, IL 60631
 PHONE: (773) 792-8510
 FAX: (773) 792-8512

Poplar Creek
 Watershed Study Area
 Detailed Watershed Plan

Poplar Creek Mainstem
 Overview (2 of 3)

Figure 3.1.1



LEGEND

Problem Types

- Bank Erosion
- Overbank flooding
- Pavement flooding
- Water Quality/Poor Habitat

Local

- Pavement flooding
- Storm Sewer Flow Restriction
- Water Quality/Poor Habitat
- Problem Area Identified Through Modeling
- Alternative Location
- DWP 100-year Inundation Area

FEMA Floodplain

- ZONE A, AH, and AO
- ZONE AE

Watershed Boundaries

- Poplar Creek Watershed Boundary
- Flint Creek Watershed Boundary
- Spring Creek Watershed Boundary
- Brewster Creek Watershed Boundary
- West Branch Dupage River Watershed Boundary

Other Features

- Subbasins
- River / Stream
- Freeway Non-Interstate
- Interstate
- Minor Arterial (Urban)
- Other Principal Arterial
- Municipal Boundaries
- County Boundaries

Hey and Associates, Inc.
 Water Resources, Wetlands and Ecology
 6321 N. AVONDALE AVENUE, SUITE A-211
 CHICAGO, IL 60631
 PHONE: (773) 792-8510
 FAX: (773) 792-8512

Poplar Creek
 Watershed Study Area
 Detailed Watershed Plan

Poplar Creek Mainstem
 Overview (3 of 3)

Figure 3.1.1