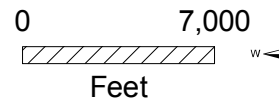
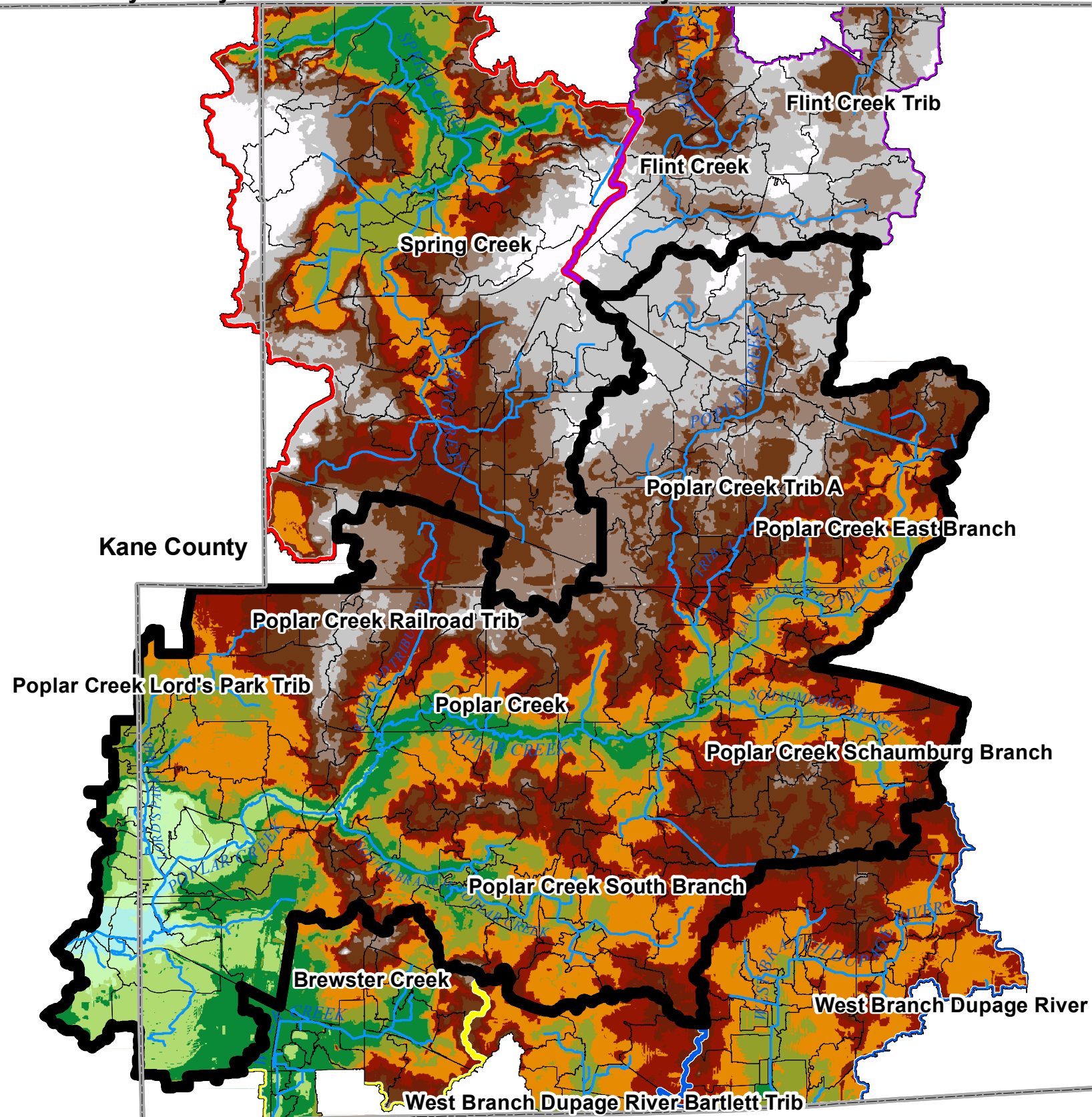


McHenry County

Lake County

Kane County

DuPage County



LEGEND

- County Boundaries
  - River/Stream
  - Flint Creek Watershed Boundary
  - Brewster Creek Watershed Boundary
  - Spring Creek Watershed Boundary
  - West Branch Dupage River Watershed Boundary
  - Poplar Creek Watershed Boundary
  - Subbasins
- Elevation**
- 690 - 720
  - 720 - 740
  - 740 - 760
  - 760 - 780
  - 780 - 795
  - 795 - 810
  - 810 - 820
  - 820 - 830
  - 830 - 845
  - 845 - 860
  - 860 - 885
  - 885 - 948.4

Hey and Associates, Inc.  
Water Resources, Wetlands and Ecology

6321 N. AVONDALE AVENUE, SUITE A-211  
CHICAGO, IL 60631  
PHONE: (773) 792-8510  
FAX: (773) 792-8512

Poplar Creek  
Watershed Study Area  
Detailed Watershed Plan

Poplar Creek  
Watershed  
Study Area Topography  
and Drainage Network

Figure 2.3.3