

McHenry County

Lake County

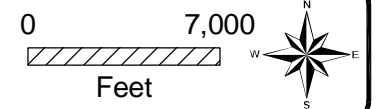
Kane County

DuPage County

Tyler Creek
05550300

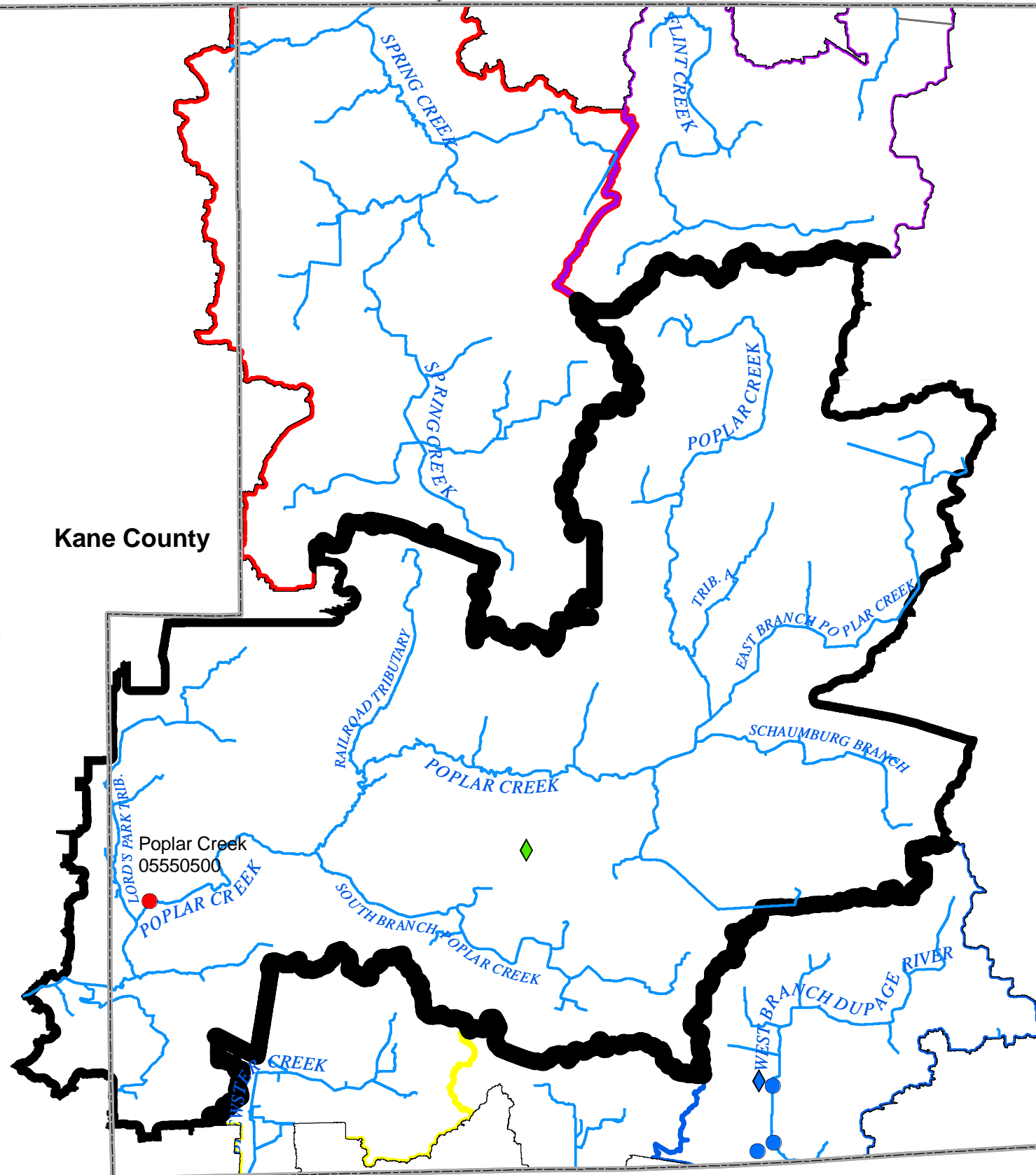
Salt Creek
05530990

Poplar Creek
05550500



LEGEND

- ◆ District Rain Gage
- District Stage Gage
- ◆ Municipal/Other Rain Gage
- ◆ USGS Rain Gage
- USGS Stream Gage
- ▭ County Boundaries
- River/Stream
- ▭ Flint Creek Watershed Boundary
- ▭ Brewster Creek Watershed Boundary
- ▭ Spring Creek Watershed Boundary
- ▭ West Branch Dupage River Watershed Boundary
- ▭ Poplar Creek Watershed Boundary



Hey and Associates, Inc.
Water Resources, Wetlands and Ecology

6321 N. AVONDALE AVENUE, SUITE A-211
CHICAGO, IL 60631
PHONE: (773) 792-8510
FAX: (773) 792-8512

Poplar Creek
Watershed Study Area
Detailed Watershed Plan

Poplar Creek
Watershed
Study Area Monitoring
Locations

Figure 2.3.1