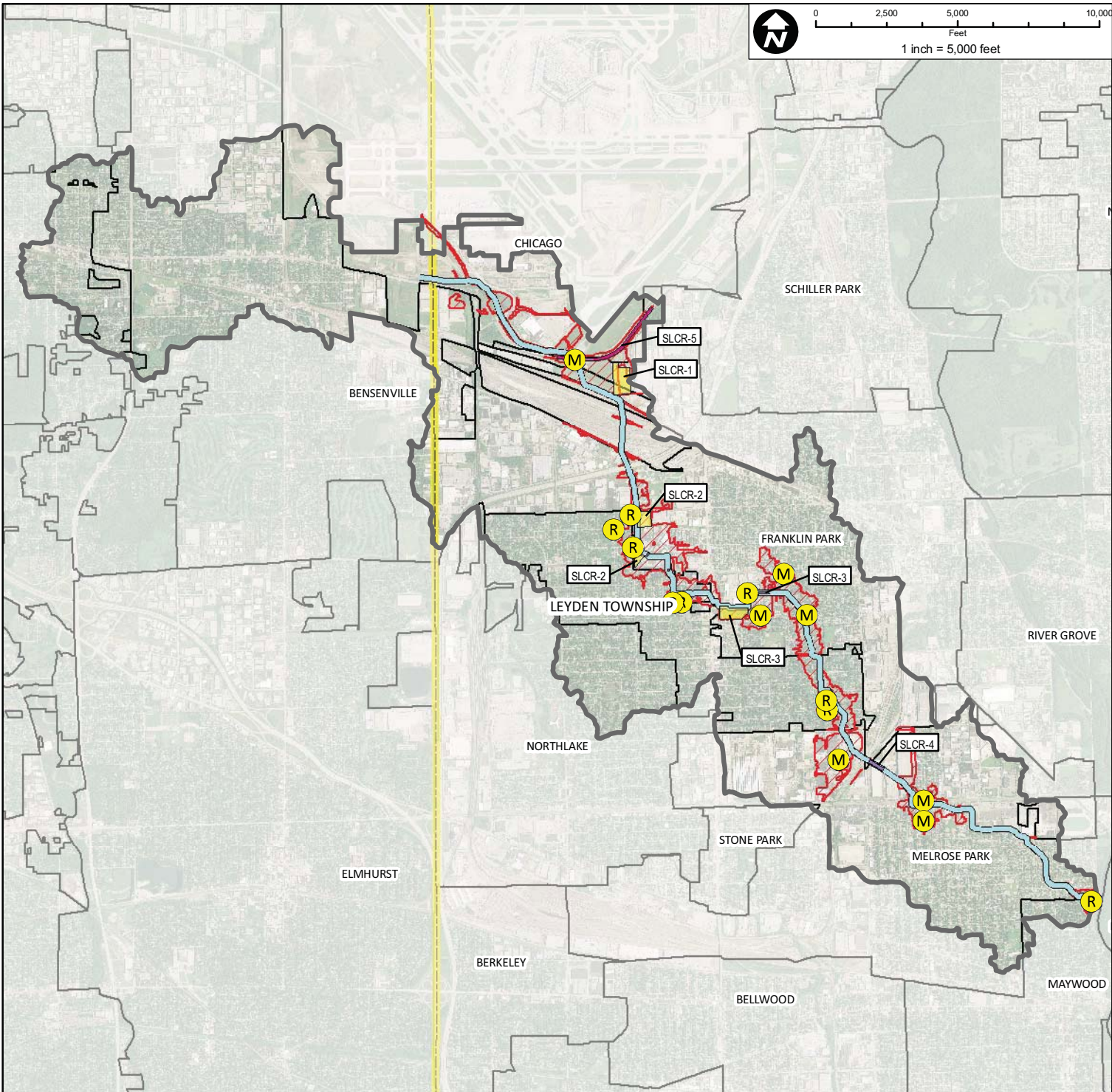

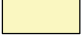




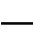







0 2,500 5,000 10,000
Feet
1 inch = 5,000 feet



-  100-Year Storm Event Flood Inundation Without Project
-  Reservoir
-  Channel Improvements
-  Culvert/Bridge Modification
-  Levee/Floodwall

-  Approximate Creek Channel Location
-  Municipal Boundary
-  Watershed Boundary

- Problem Areas**
-  Modeled
 -  Regional



CLIENT:
METROPOLITAN WATER RECLAMATION DISTRICT OF GREATER CHICAGO

TITLE:
LOWER DES PLAINES RIVER DETAILED WATERSHED PLAN SILVER CREEK WATERSHED TRIBUTARY OVERVIEW

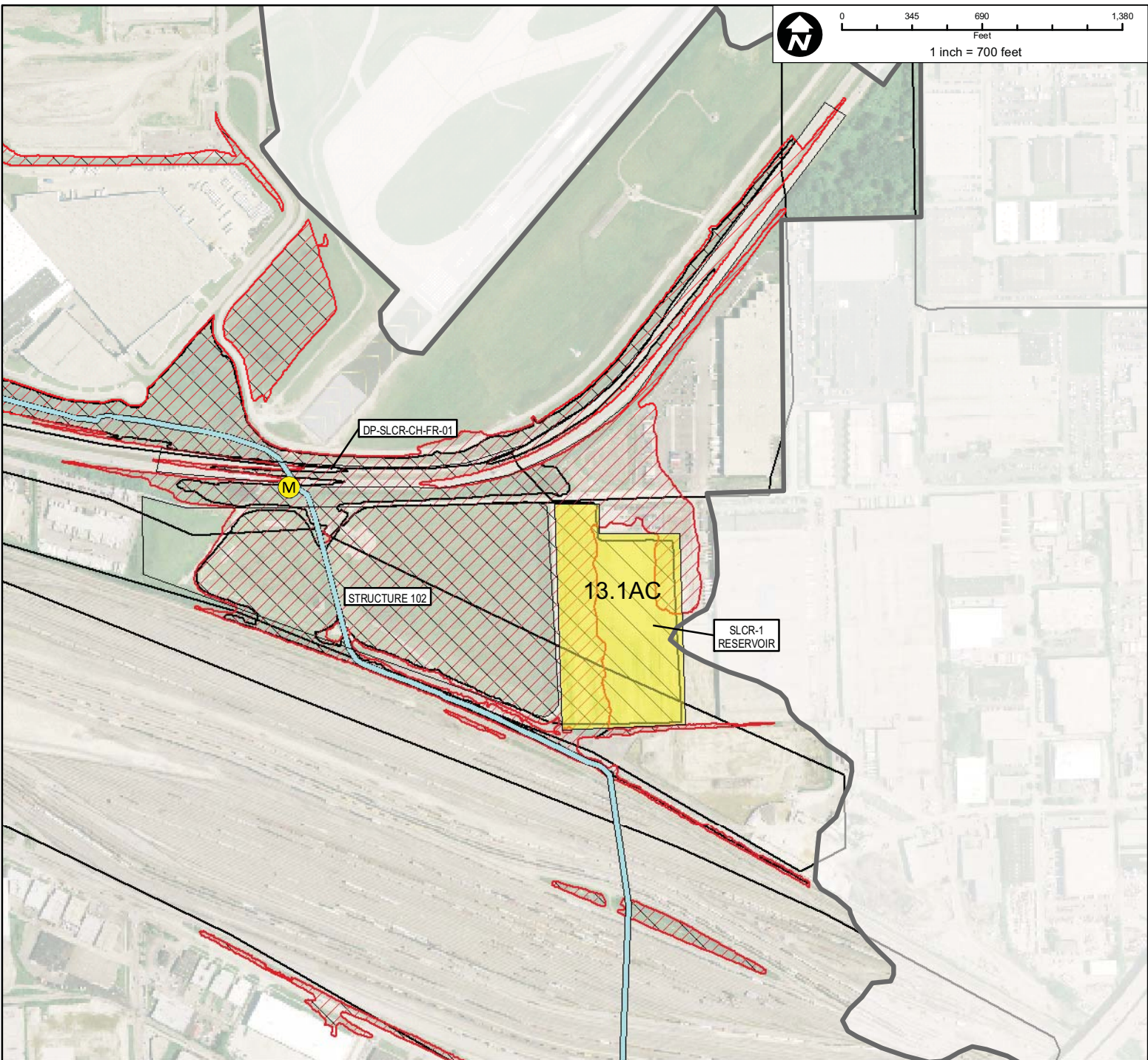
PROJ. NO. 08-0043
DATE: 05-05-2010
SHEET 1 OF 1
DRAWING NO.

 **CHRISTOPHER B. BURKE ENGINEERING, LTD.**
9575 W. Higgins Road, Suite 600 · Rosemont, Illinois 60018 · (847) 823-0500

DSGN.	DRW	4-10	SCALE:	1"=5,000'
DWN.			GIS USER	DRW
CHKD.			PLOT DATE	
FILE:				

FIGURE 3.15.1

Map Document: (Z:\MWRD\GC\08-0043 Phase B\GIS\Exhibits\Meeting Maps\Crystal Silver Creek Overall.mxd) 8/24/2010 - 2:27:07 PM

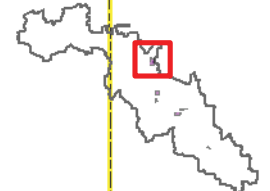


Subwatershed: Silver Creek
 Alternative: SLCR-1
 Alternatives Description: Expand Structure 102 by adding approximately 250 A-F of storage volume, 3:1 side slopes, approximately 25 feet deep.

Concept Level Cost: \$21,171,664
 Benefits: \$2,053,569
 B/C Ratio: 0.1

Legend

- | | | | | | | |
|--|---|--|-----------------------------|--|------------------------------------|---|
| | 100-Year Storm Event Flood Inundation Without Project | | Culvert/Bridge Modification | | Approximate Creek Channel Location | Problem Areas
Modeled
Regional |
| | 100-Year Storm Event Flood Inundation With Project | | Channel Improvements | | Municipal Boundary | |
| | Reservoir | | Levee/Floodwall | | Watershed Boundary | |



CLIENT:
METROPOLITAN WATER RECLAMATION DISTRICT OF GREATER CHICAGO

TITLE:
LOWER DES PLAINES RIVER DETAILED WATERSHED PLAN SILVER CREEK WATERSHED PROPOSED ALTERNATIVE SLCR-1

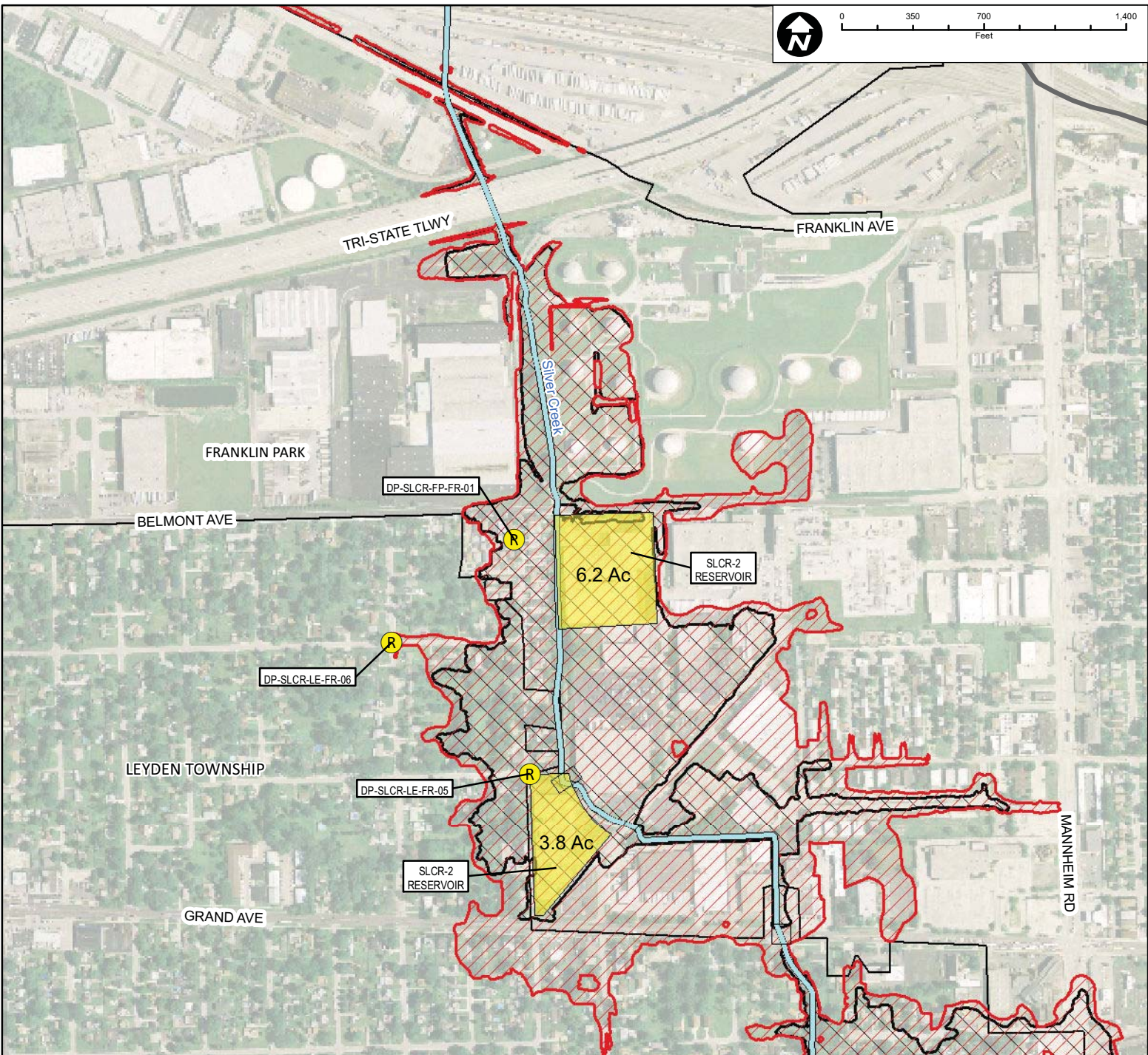
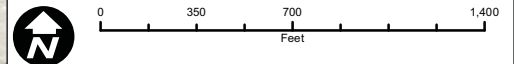
PROJ. NO. 08-0043
 DATE: 05-06-2010
 SHEET 1 OF 1
 DRAWING NO.

CHRISTOPHER B. BURKE ENGINEERING, LTD.
 9575 W. Higgins Road, Suite 600 · Rosemont, Illinois 60018 · (847) 823-0500

DSGN.	DRW	4-10	SCALE	1' = 700'
DWN.			GIS USER	DRW
CHKD.			PLOT DATE	
FILE:				

FIGURE 3.15.2

Map Document: (Z:\MWR\RDCC\08-0043 Phase B\GIS\Exhibits\Meeting Maps\Crystal Silver Gouff\Silver Creek Detailed Sheets.mxd) 8/24/2010 10:13:38:11 PM



Subwatershed: Silver Creek
 Alternative: SLCR-2
 Alternatives Description: Alternative SLCR-1 with approximately 230 A-F (6.2AC-150A-F, 3.8AC-80A-F) on two "For-Sale" industrial parcels. Pump outlet, 40 feet deep, 3:1 side slopes.

Concept Level Cost: \$51,501,231
 Benefits: \$10,415,557
 B/C Ratio: 0.2

Legend

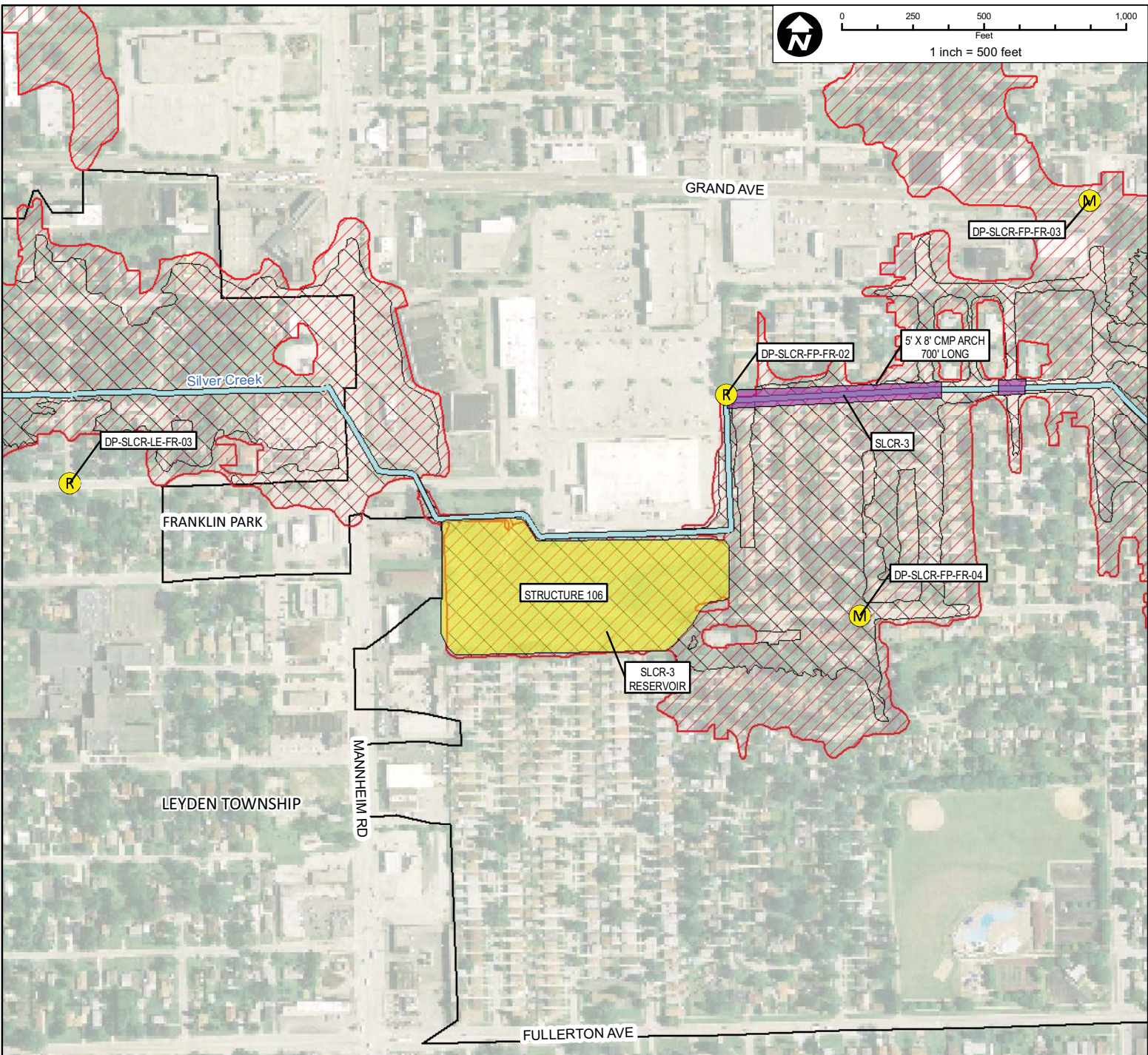
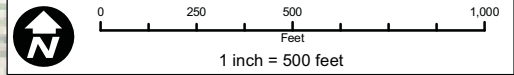
100-Year Storm Event Flood Inundation Without Project	Culvert/Bridge Modification	Approximate Creek Channel Location	Problem Areas Modeled Regional
100-Year Storm Event Flood Inundation With Project	Channel Improvements	Municipal Boundary	
Reservoir	Levee/Floodwall	Watershed Boundary	

CLIENT: METROPOLITAN WATER RECLAMATION DISTRICT OF GREATER CHICAGO	TITLE: LOWER DES PLAINES RIVER DETAILED WATERSHED PLAN SILVER CREEK WATERSHED RECOMMENDED ALTERNATIVE SLCR-2	PROJ. NO. 08-0043 DATE: 05-06-2010 SHEET 1 OF 1 DRAWING NO.
--	--	--

CHRISTOPHER B. BURKE ENGINEERING, LTD. 9575 W. Higgins Road, Suite 600 · Rosemont, Illinois 60018 · (847) 823-0500	DSGN.	DRW	4-10	SCALE	
	DWN.			GIS USER	DRW
	CHKD.			PLOT DATE	
	FILE:				

FIGURE 3.15.3

Map Document: (Z:\MWR\RDCC\08-0043 Phase B\GIS\Exhibits\Meeting Maps\Crystal Silver Gouff\Silver Creek Detailed Sheets.mxd) 8/20/2010 10:32:06 AM



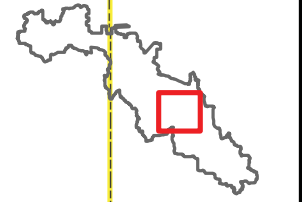
Subwatershed: Silver Creek
 Alternative: SLCR-3

Alternatives Description: With alternatives SLCR-1 and SLCR-2, Expand Structure 106 by approximately 200 A-F by utilizing vertical walls, maintain depth, raise southeast corner to 640 feet.
 Replace Riverside Drive and Louis Street Culverts, with 730 feet of 10 feet X 5 feet reinforced concrete box culvert.

Concept Level Cost: \$116,511,266
 Benefits: \$11,168,866
 B/C Ratio: 0.1

Legend

- | | | | |
|---|-----------------------------|------------------------------------|---|
| 100-Year Storm Event Flood Inundation Without Project | Culvert/Bridge Modification | Approximate Creek Channel Location | Problem Areas
Modeled
Regional |
| 100-Year Storm Event Flood Inundation With Project | Channel Improvements | Municipal Boundary | |
| Reservoir | Levee/Floodwall | Watershed Boundary | |
| | | | |



CLIENT:
METROPOLITAN WATER RECLAMATION DISTRICT OF GREATER CHICAGO

TITLE:
LOWER DES PLAINES RIVER DETAILED WATERSHED PLAN SILVER CREEK WATERSHED PROPOSED ALTERNATIVE SLCR-3

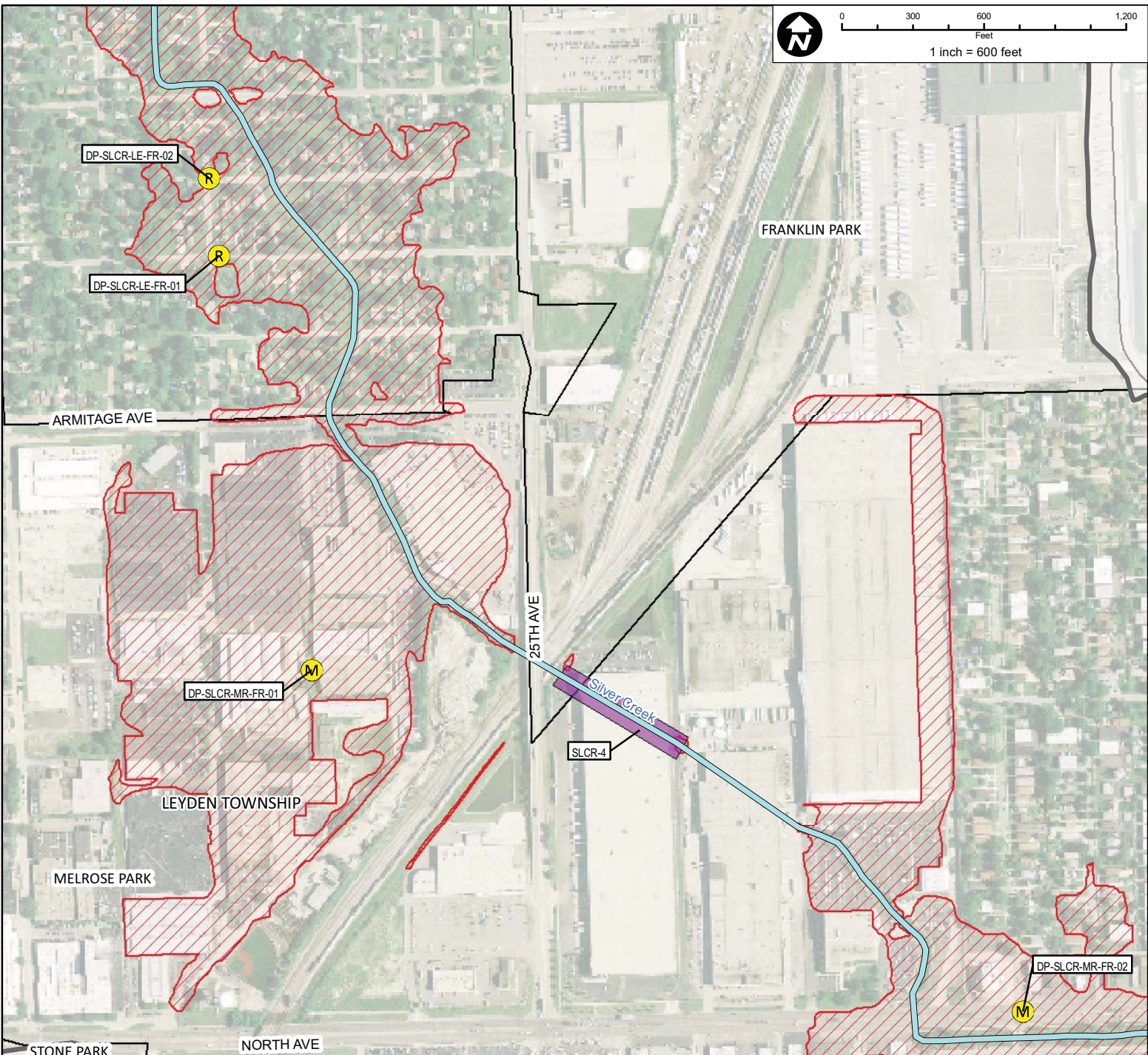
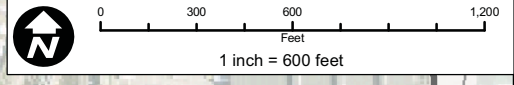
PROJ. NO. 08-0043
 DATE: 05-06-2010
 SHEET 1 OF 1
 DRAWING NO.

CHRISTOPHER B. BURKE ENGINEERING, LTD.
 9575 W. Higgins Road, Suite 600 · Rosemont, Illinois 60018 · (847) 823-0500

DSGN.	DRW	4-10	SCALE	1' = 500'
DWN.			GIS USER	DRW
CHKD.			PLOT DATE	
FILE:				

FIGURE 3.15.4

Map Document: (Z:\MWR\RDCC\08-0043 Phase B\GIS\Exhibits\Meeting Maps\Crystal Silver Gouff\Silver Creek Detailed Sheets.mxd) 8/2/2010 9:22:04 AM



Subwatershed: Silver Creek
 Alternative: SLCR-4
 Alternatives Description: Remove silt down stream of 3 - 12 feet X 12 feet reinforced concrete box culverts.

Concept Level Cost: N/A
 Benefits: N/A, Temporarily reduce up stream water surface elevation by 0.2 feet - 0.5 feet
 B/C Ratio: N/A

Legend

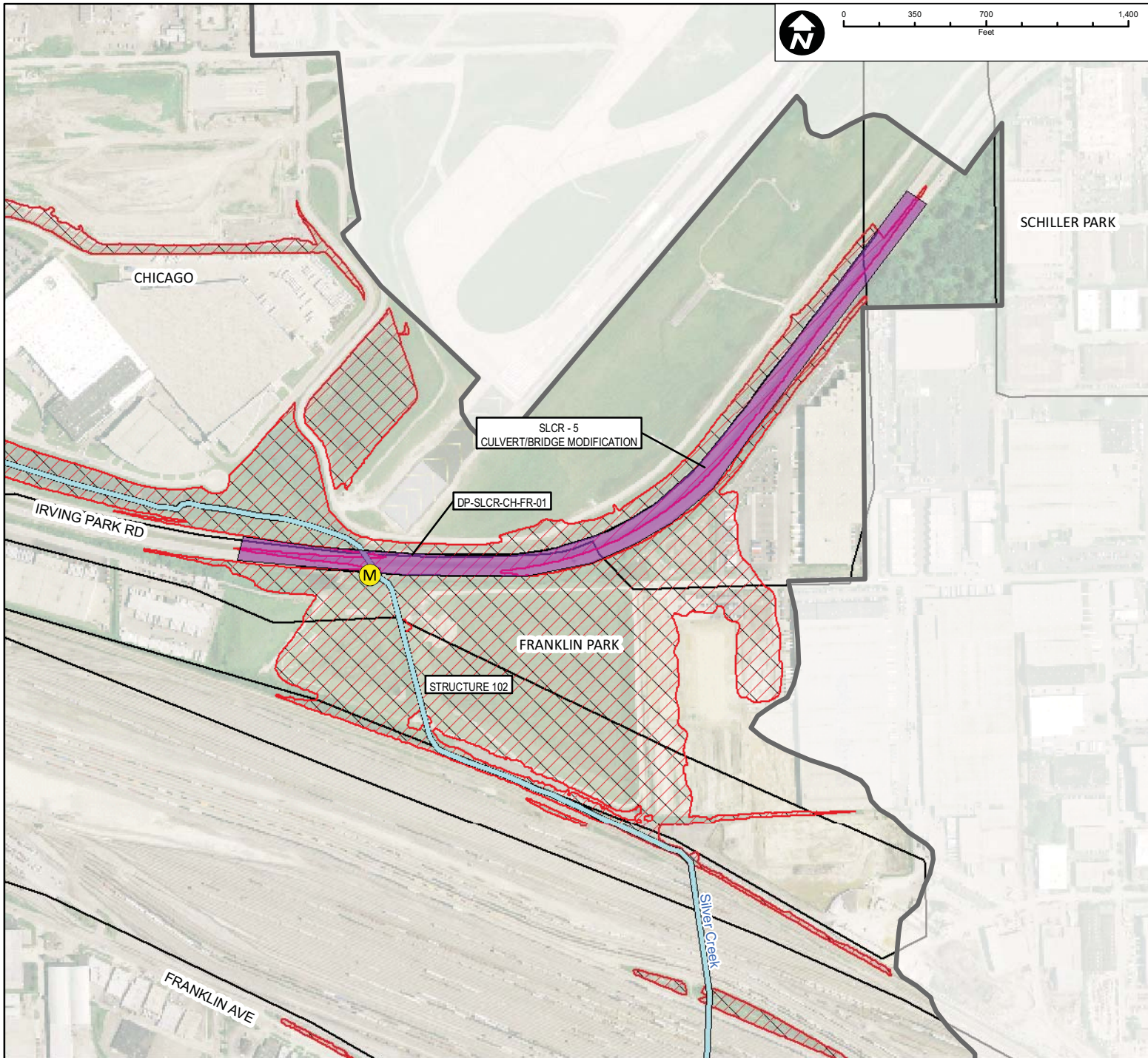
100-Year Storm Event Flood Inundation Without Project	Culvert/Bridge Modification	Approximate Creek Channel Location	Problem Areas Modeled Regional
100-Year Storm Event Flood Inundation With Project	Channel Improvements	Municipal Boundary	
Reservoir	Levee/Floodwall	Watershed Boundary	

CLIENT: METROPOLITAN WATER RECLAMATION DISTRICT OF GREATER CHICAGO	TITLE: LOWER DES PLAINES RIVER DETAILED WATERSHED PLAN SILVER CREEK WATERSHED PROPOSED ALTERNATIVE SLCR-4	PROJ. NO. 08-0043 DATE: 05-06-2010 SHEET 1 OF 1 DRAWING NO.
--	---	--

CHRISTOPHER B. BURKE ENGINEERING, LTD. 9575 W. Higgins Road, Suite 600 · Rosemont, Illinois 60018 · (847) 823-0500	DSGN.	DRW	4-10	SCALE	1" = 1,500'
	DWN.			GIS USER	DRW
	CHKD.			PLOT DATE	
	FILE:				

FIGURE 3.15.5

Map Document: (Z:\MWR\RDCC\08-0043 Phase B\GIS\Exhibits\Meeting Maps\Crystal Silver Gouff\Silver Creek Detailed Sheets.mxd) 8/20/2010 9:32:13 AM

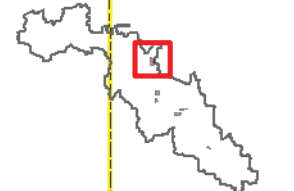


Subwatershed: Silver Creek
 Alternative: SLCR-5
 Alternatives Description: Raise Irving Park Road above 100-year floodplain and replace existing culvert with triple 11 feet X 5 feet reinforced concrete box culvert.

Concept Level Cost: \$3,944,629
 Benefits: \$239,448
 B/C Ratio: 0.06

Legend

- 100-Year Storm Event Flood Inundation Without Project
- Culvert/Bridge Modification
- Approximate Creek Channel Location
- Problem Areas Modeled
- 100-Year Storm Event Flood Inundation With Project
- Channel Improvements
- Municipal Boundary
- Problem Areas Regional
- Reservoir
- Levee/Floodwall
- Watershed Boundary



CLIENT:
METROPOLITAN WATER RECLAMATION DISTRICT OF GREATER CHICAGO

TITLE:
**LOWER DES PLAINES RIVER DETAILED WATERSHED PLAN
 SILVER CREEK WATERSHED
 RECOMMENDED ALTERNATIVE SLCR-5**

PROJ. NO. 08-0043
 DATE: 05-06-2010
 SHEET 1 OF 1
 DRAWING NO.

CHRISTOPHER B. BURKE ENGINEERING, LTD.
 9575 W. Higgins Road, Suite 600 · Rosemont, Illinois 60018 · (847) 823-0500

DSGN.	DRW	4-10	SCALE	
DWN.			GIS USER	DRW
CHKD.			PLOT DATE	
FILE:				

FIGURE 3.15.6

Map Document: (Z:\MWR\RDCC\08-0043 Phase B\GIS\Exhibits\Meeting Maps\Crystal Silver Gouff\Silver Creek Detailed Sheets.mxd) 8/20/2010 9:27:37 AM