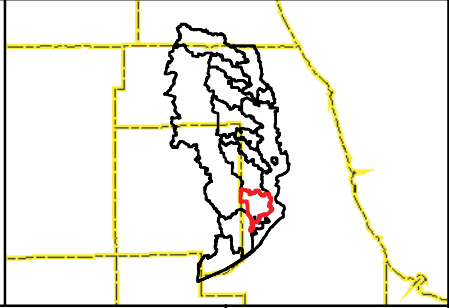


- 100-Year Storm Event Flood Inundation Without Project
- Reservoir
- Channel Improvements
- Culvert/Bridge Modification
- Floodwall

- Approximate Creek Channel Location
- Municipal Boundary
- Watershed Boundary

- Problem Areas**
- Modeled
 - Regional



CLIENT:
METROPOLITAN WATER RECLAMATION DISTRICT OF GREATER CHICAGO

TITLE:
LOWER DES PLAINES RIVER DETAILED WATERSHED PLAN SALT CREEK WATERSHED TRIBUTARY OVERVIEW

PROJ. NO. 08-0043
 DATE: 04-29-2010
 SHEET 1 OF 1
 DRAWING NO.

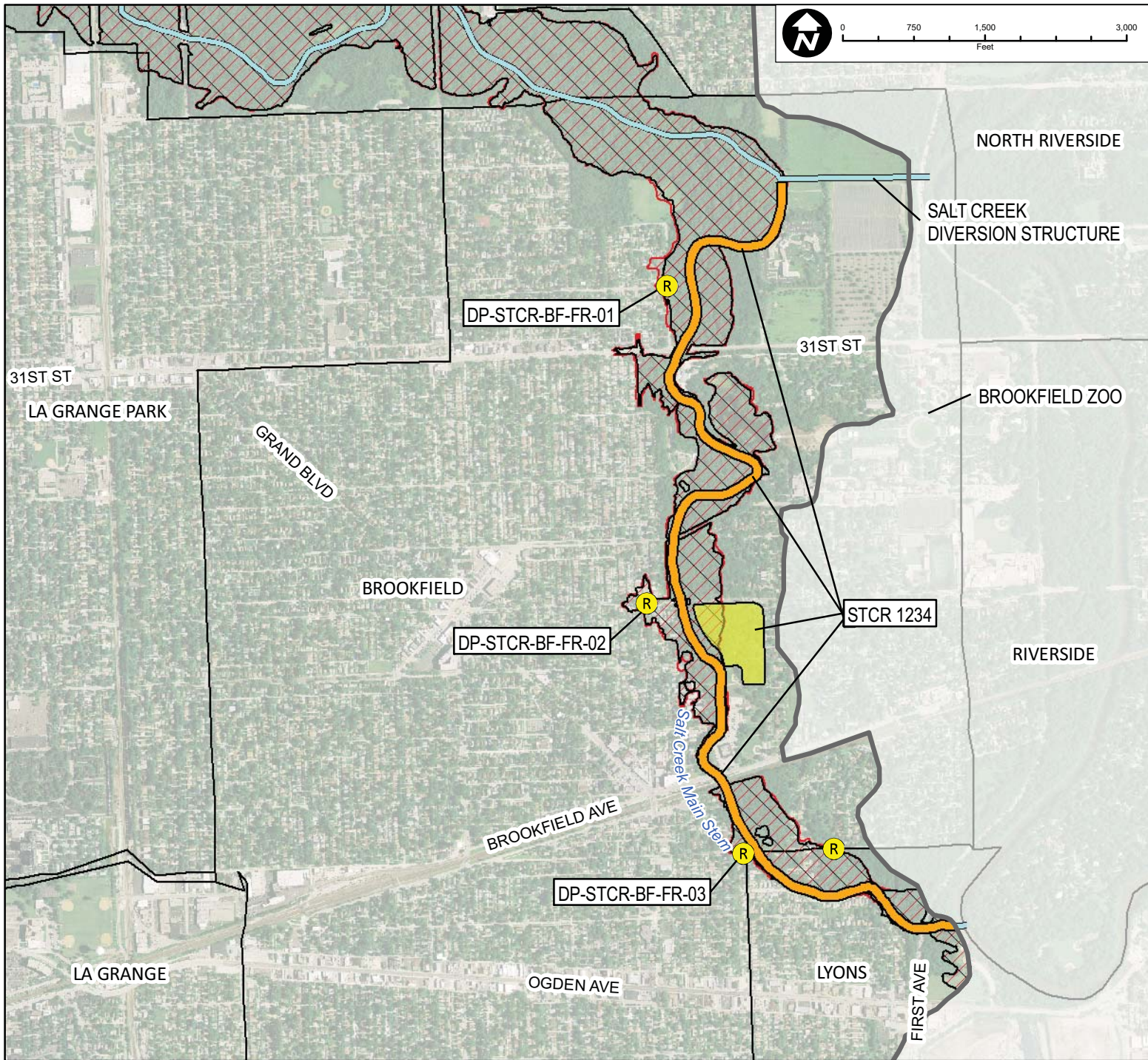
CHRISTOPHER B. BURKE ENGINEERING, LTD.
 9575 W. Higgins Road, Suite 600 · Rosemont, Illinois 60018 · (847) 823-0500

DSGN.	DRW	4-10	SCALE:	
DWN.			GIS USER	DRW
CHKD.			PLOT DATE	
FILE:				

FIGURE 3.14.1

Map Document: Z:\MWRDC\08-0043 Phase B\GIS\Exhibits\Meeting Maps\Addison Salt Creek\Salt Creek Overview.mxd 11/22/2010 - 9:43:46 AM

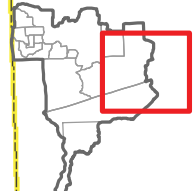
Map Document: (Z:\MWRPDC\08-0043 Phase B\GIS\Exhibits\Meeting Maps\Addison Salt Creek\Salt Creek Detailed Sheets 1.mxd) 1/22/2010 -- 9:50:24 AM



Subwatershed: Salt Creek
 Alternative: STCR 1234
 Alternatives Description:
 85 A-F Reservoir north of Brookfield Village Hall, along with Channel Improvements from Salt Creek Diversion Structure to confluence with Des Plaines River

Concept Level Cost: \$11,864,497
 Benefits: \$1,525,502
 B/C Ratio: 0.1

Legend	
	100-Year Storm Event Flood Inundation With Project
	100-Year Storm Event Flood Inundation Without Project
	Reservoir
	Culvert/Bridge Modification
	Channel Improvements
	Floodwall
	Approximate Creek Channel Location
	Municipal Boundary
	Watershed Boundary
Problem Areas	
	Modeled
	Regional



CLIENT:
METROPOLITAN WATER RECLAMATION DISTRICT OF GREATER CHICAGO

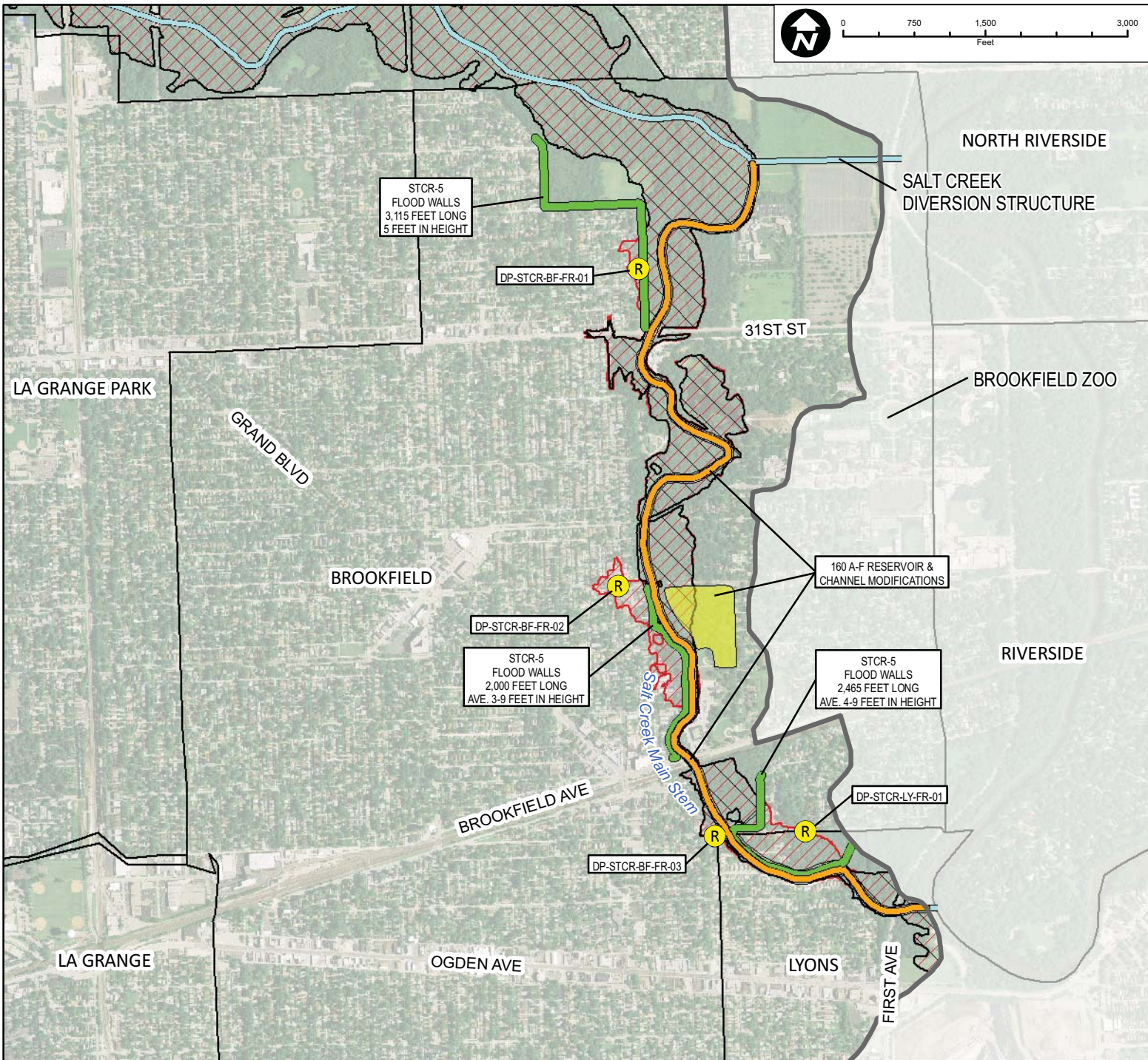
TITLE:
**LOWER DES PLAINES RIVER DETAILED WATERSHED PLAN
 SALT CREEK WATERSHED
 PROPOSED ALTERNATIVE STCR-1234**

PROJ. NO. 08-0043
 DATE: 04-29-2010
 SHEET 1 OF 1
 DRAWING NO.

CHRISTOPHER B. BURKE ENGINEERING, LTD.
 9575 W. Higgins Road, Suite 600 · Rosemont, Illinois 60018 · (847) 823-0500

DSGN.	DRW	4-10	SCALE	
DWN.			GIS USER	DRW
CHKD.			PLOT DATE	
FILE:				

FIGURE 3.14.9

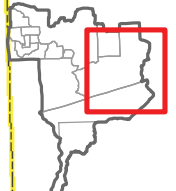


Subwatershed: Salt Creek
 Alternative: STCR 5
 Alternatives Description: Floodwall north of 31st Street, north of Brookfield Avenue, and south of Brookfield Avenue. Also includes Alternative 1234 with a 160 A-F reservoir.

Concept Level Cost: \$39,964,011
 Benefits: \$7,179,906
 B/C Ratio: 0.2

Legend

- 100-Year Storm Event Flood Inundation With Project
- 100-Year Storm Event Flood Inundation Without Project
- Reservoir
- Culvert/Bridge Modification
- Channel Improvements
- Floodwall
- Approximate Creek Channel Location
- Municipal Boundary
- Watershed Boundary
- Problem Areas**
- Modeled
- Regional



CLIENT:
METROPOLITAN WATER RECLAMATION DISTRICT OF GREATER CHICAGO

TITLE:
**LOWER DES PLAINES RIVER DETAILED WATERSHED PLAN
 SALT CREEK WATERSHED
 PROPOSED ALTERNATIVE STCR-5**

PROJ. NO. 08-0043
 DATE: 04-29-2010
 SHEET 1 OF 1
 DRAWING NO.

CHRISTOPHER B. BURKE ENGINEERING, LTD.
 9575 W. Higgins Road, Suite 600 · Rosemont, Illinois 60018 · (847) 823-0500

DSGN.	DRW	4-10	SCALE	
DWN.			GIS USER	DRW
CHKD.			PLOT DATE	
FILE:				

FIGURE 3.14.10

Map Document: (Z:\MWRPDC\08-0043 Phase B\GIS\Exhibits\Meeting Maps\Addison Salt Creek\Salt Creek Detailed Sheets 1.mxd) 1/22/2010 9:53:56 AM