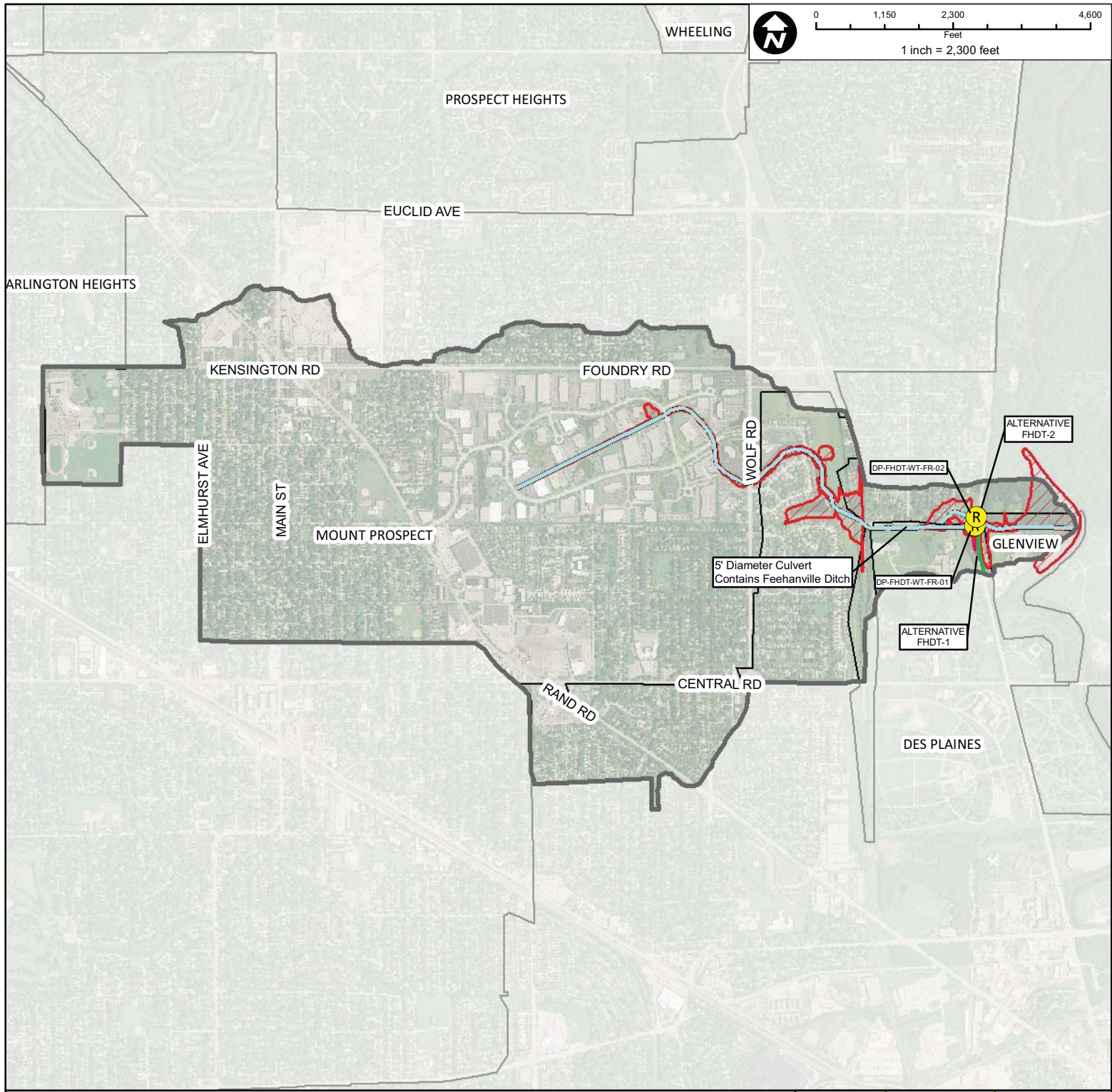


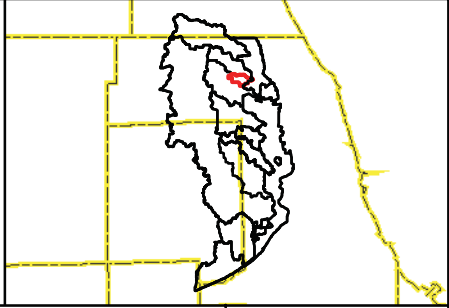
Map Document: Z:\MWRD\GIS\Exhibits\Meeting Maps\Feehanville Willow McDonald Creeks\Feehanville Creek Overall.mxd 10/18/2010 -- 16:25:33



- 100-Year Storm Event Flood Inundation Without Project
- Reservoir
- Channel Improvements
- Culvert/Bridge Modification
- Levee/Floodwall

- Approximate Creek Channel Location
- Municipal Boundary
- Watershed Boundary

- Problem Areas**
- Modeled
 - Regional



CLIENT:
METROPOLITAN WATER RECLAMATION DISTRICT OF GREATER CHICAGO

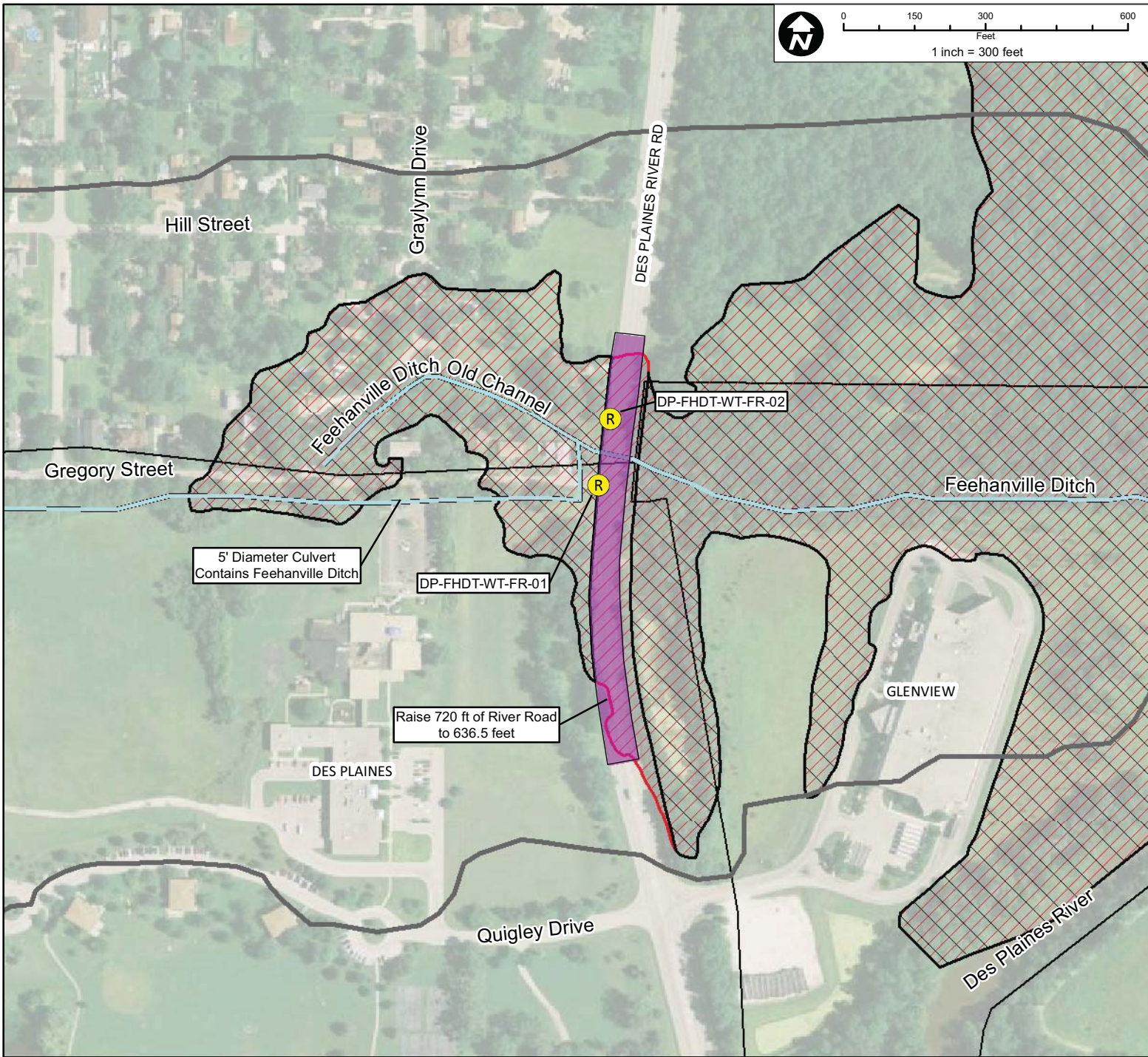
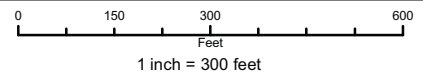
TITLE:
**LOWER DES PLAINES RIVER DETAILED WATERSHED PLAN
 FEEHANVILLE DITCH WATERSHED TRIBUTARY OVERVIEW**

PROJ. NO. 08-0043
 DATE: 03-23-2010
 SHEET 1 OF 1
 DRAWING NO.

CHRISTOPHER B. BURKE ENGINEERING, LTD.
 9575 W. Higgins Road, Suite 600 · Rosemont, Illinois 60018 · (847) 823-0500

DSGN.	DRW	4-10	SCALE:	1"=2,300'
DWN.			GIS USER	DRW
CHKD.			PLOT DATE	
FILE:				

FIGURE 3.10.1

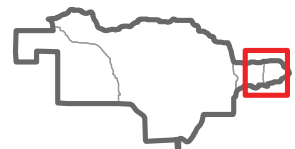


Subwatershed: Feehanville Ditch
 Alternative: FHDT-1
 Alternatives Description: Raise approximately 720 feet of Des Plaines River Road to 636.5 feet.

Concept Level Cost: \$3,678,786
 Benefits: \$356,629
 B/C Ratio: 0.1

Legend

- 100-Year Storm Event Flood Inundation Without Project
- Culvert/Bridge Modification
- Approximate Creek Channel Location
- Modeled Problem Areas
- 100-Year Storm Event Flood Inundation With Project
- Channel Improvements
- Municipal Boundary
- Regional Problem Areas
- Reservoir
- Levee/Floodwall
- Watershed Boundary



CLIENT:
METROPOLITAN WATER RECLAMATION DISTRICT OF GREATER CHICAGO

TITLE:
**LOWER DES PLAINES RIVER DETAILED WATERSHED PLAN
 FEEHANVILLE DITCH WATERSHED
 PROPOSED ALTERNATIVE FHDT-1**

PROJ. NO. 08-0043
 DATE: 07-15-2010
 SHEET 1 OF 1
 DRAWING NO.

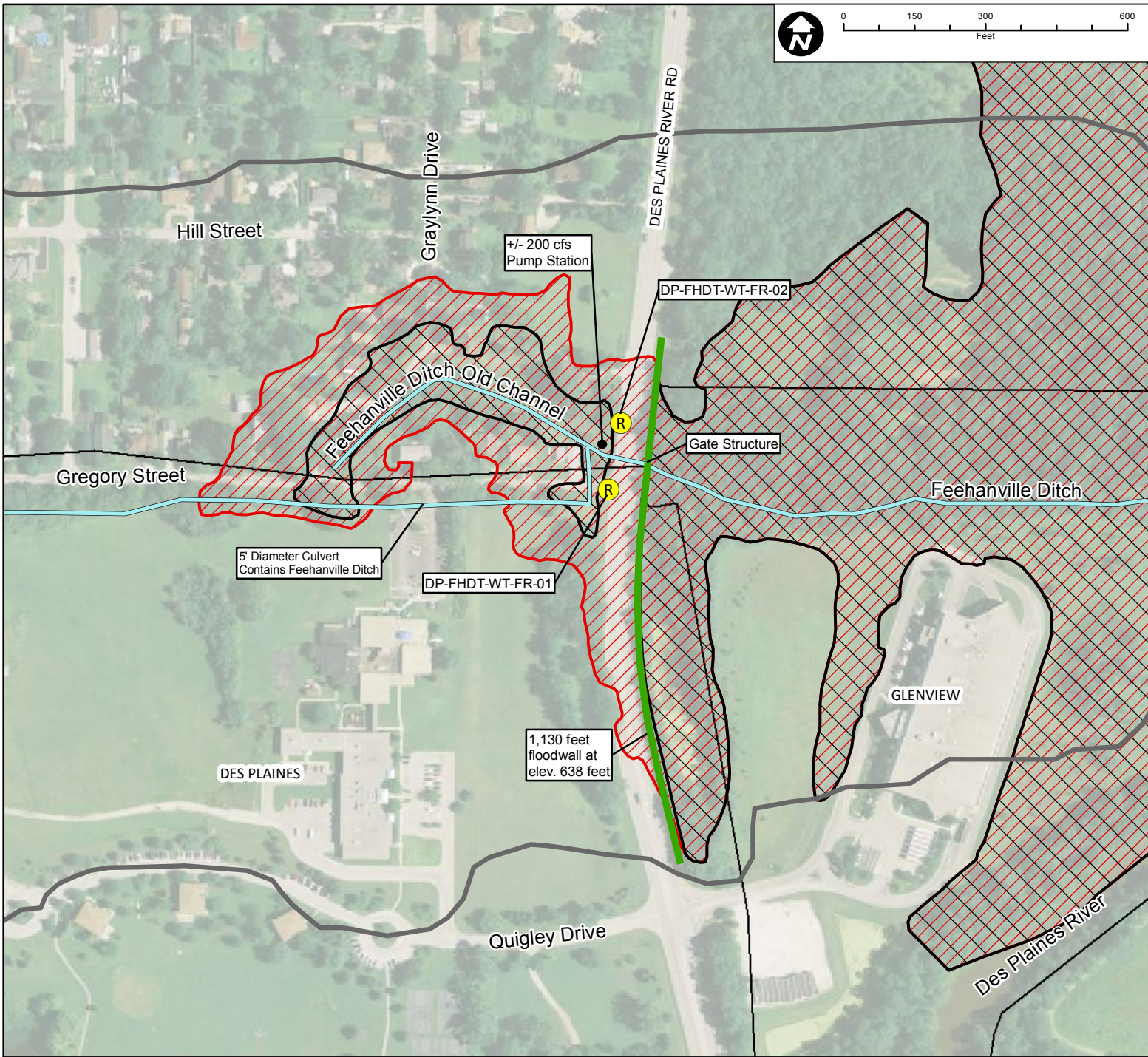


CHRISTOPHER B. BURKE ENGINEERING, LTD.
 9575 W. Higgins Road, Suite 600 · Rosemont, Illinois 60018 · (847) 823-0500

DSGN.	DRW	4-10	SCALE:	1"=300'
DWN.			GIS USER	DRW
CHKD.			PLOT DATE	
FILE:				

FIGURE 3.10.2

Map Document: Z:\MWR\DC\08-0043 Phase B\Water\Feehanville\exhibits\FHDT-1.mxd 4/21/2010 -- 6:21:20 PM



Subwatershed: Feehanville Ditch

Alternative: FHDT-2

Alternatives Description: Approximately 1,130 feet of Floodwall. Top of wall at elevation 638.0 feet. Includes 2 feet freeboard. Pump station required.

Concept Level Cost: \$8,570,197

Benefits: \$537,242

B/C Ratio: 0.06

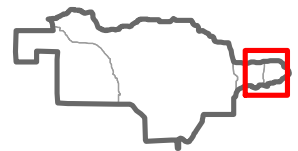
Legend

- 100-Year Storm Event Flood Inundation Without Project
- 100-Year Storm Event Flood Inundation With Project
- Reservoir

- Culvert/Bridge Modification
- Channel Improvements
- Levee/Floodwall

- Approximate Creek Channel Location
- Municipal Boundary
- Watershed Boundary

- Problem Areas**
- Modeled
 - Regional



CLIENT:

METROPOLITAN WATER RECLAMATION DISTRICT OF GREATER CHICAGO

TITLE:

**LOWER DES PLAINES RIVER DETAILED WATERSHED PLAN
FEEHANVILLE DITCH WATERSHED
RECOMMENDED ALTERNATIVE FHDT-2**

PROJ. NO. 08-0043

DATE: 03-23-2010

SHEET 1 OF 1

DRAWING NO.



CHRISTOPHER B. BURKE ENGINEERING, LTD.
9575 W. Higgins Road, Suite 600 · Rosemont, Illinois 60018 · (847) 823-0500

DSGN.	DRW	4-10	SCALE:	
DWN.			GIS USER	DRW
CHKD.			PLOT DATE	
FILE:				

FIGURE 3.10.3