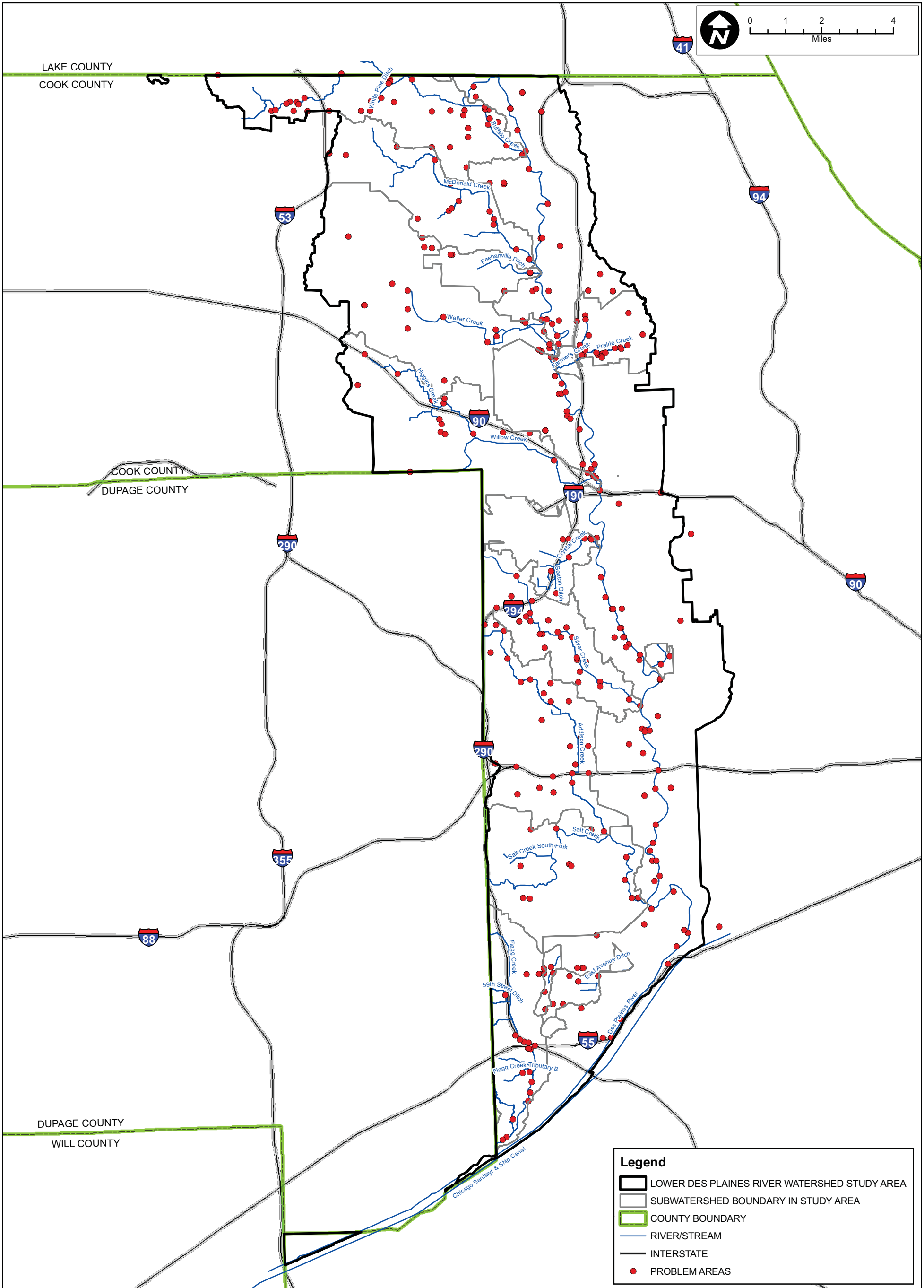


Map Document: (Z:\MWRDGC\08-0043 Phase B\Water\Des Plaines\exhibits\Watershed Problem Locations.mxd)
 11/18/2010 - 3:15:57 PM



CLIENT:

METROPOLITAN WATER RECLAMATION DISTRICT OF GREATER CHICAGO

TITLE:

LOWER DES PLAINES RIVER WATERSHED PROBLEM AREA LOCATIONS

PROJ. NO. 080043

DATE: 09-13-2009

SHEET 1 OF 1

DRAWING NO.

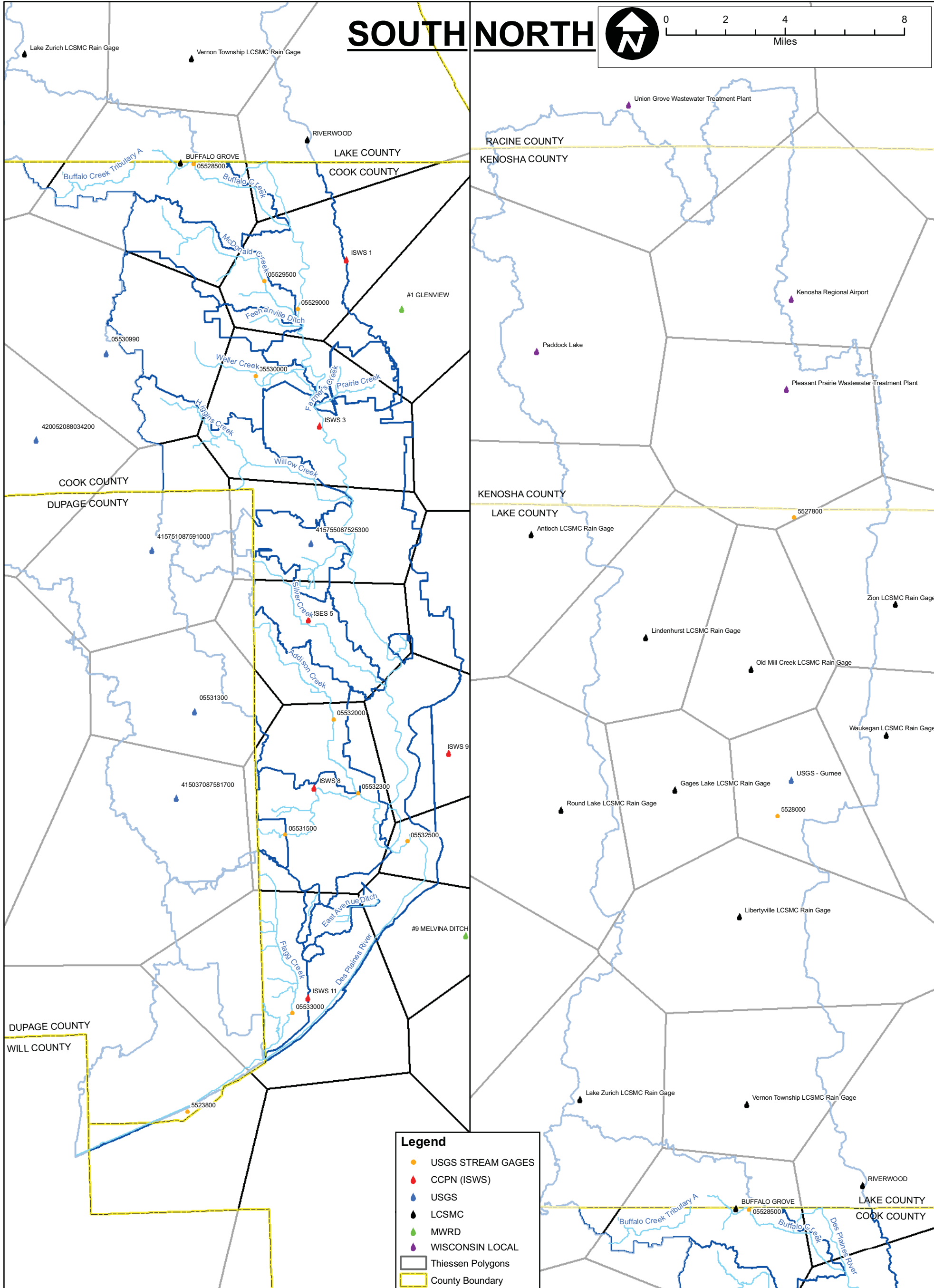
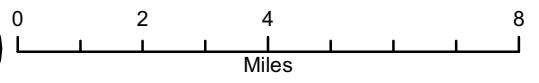
FIGURE 2.2.1



CHRISTOPHER B. BURKE ENGINEERING, LTD.
 9575 W. Higgins Road, Suite 600 · Rosemont, Illinois 60018 · (847) 823-0500

DSGN.		SCALE:	
DWN.		GIS USER	MHAYES
CHKD.		PLOT DATE	
FILE:			

SOUTH NORTH



CLIENT:
METROPOLITAN WATER RECLAMATION DISTRICT OF GREATER CHICAGO

TITLE:
LOWER DES PLAINES RIVER WATERSHED MONITORING LOCATIONS

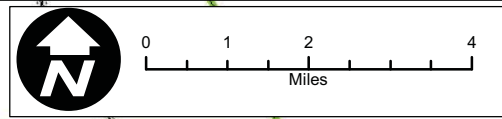
PROJ. NO. 080043
 DATE: 09-13-2009
 SHEET 0 OF 0
 DRAWING NO.

CB CHRISTOPHER B. BURKE ENGINEERING, LTD.
 9575 W. Higgins Road, Suite 600 · Rosemont, Illinois 60018 · (847) 823-0500

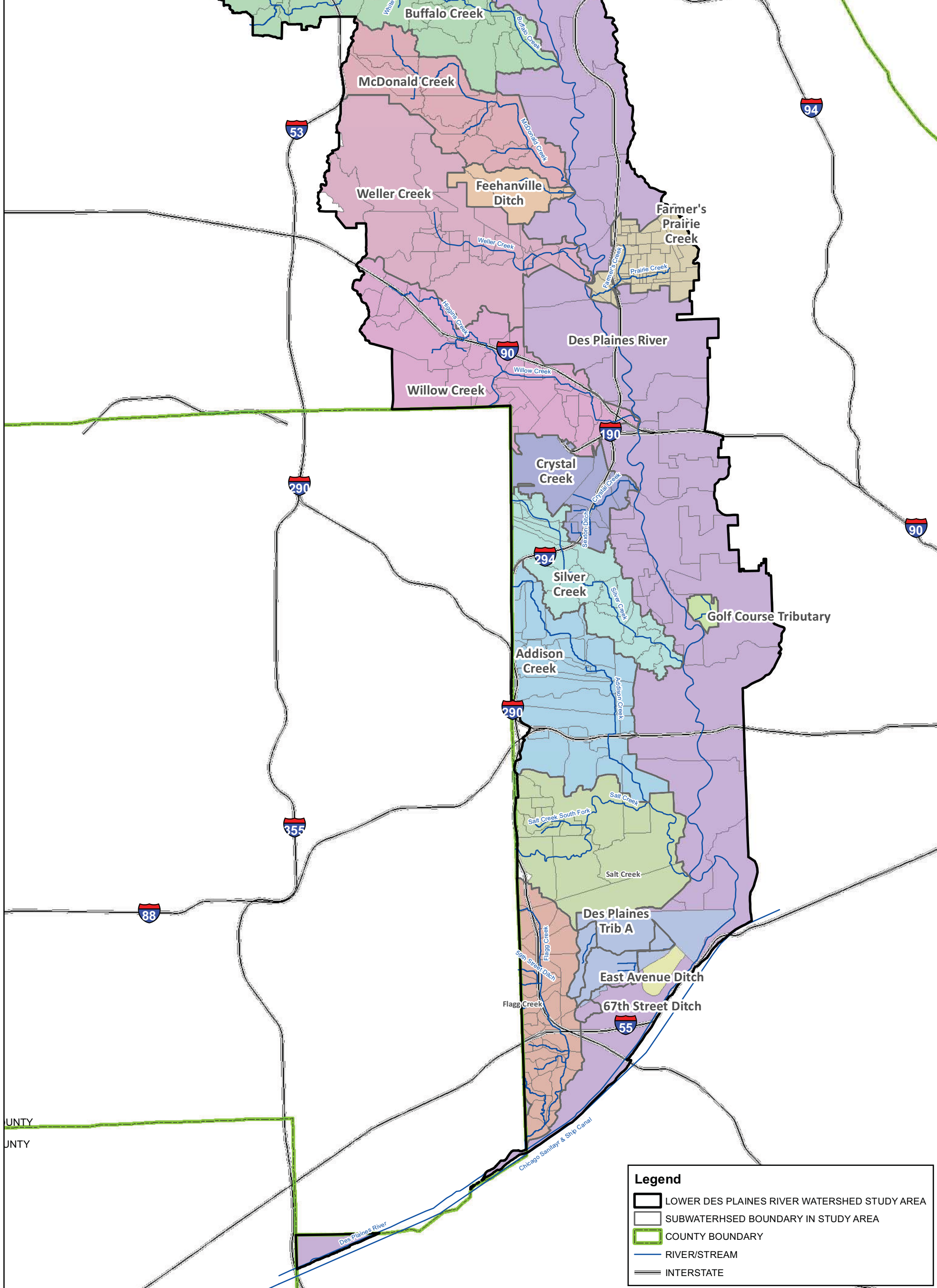
DSGN.		SCALE:	
DWN.		GIS USER	MHAYES
CHKD.		PLOT DATE	
FILE:			

FIGURE 2.3.1

Map Document: (Z:\MWRD\GC\08-0043 Phase B\Water\Des Plaines\exhibits\Aerial and Watershed Boundary Rain Gages.mxd) 11/18/2010 -- 3:22:18 PM



COUNTY
COUNTY



Legend

- LOWER DES PLAINES RIVER WATERSHED STUDY AREA
- SUBWATERSHED BOUNDARY IN STUDY AREA
- COUNTY BOUNDARY
- RIVER/STREAM
- INTERSTATE

CLIENT:
METROPOLITAN WATER RECLAMATION DISTRICT OF GREATER CHICAGO

TITLE:
LOWER DES PLAINES RIVER WATERSHED SUBWATERSHED DELINEATION

PROJ. NO. 080043
DATE: 09-13-2009
SHEET 1 OF 1
DRAWING NO.

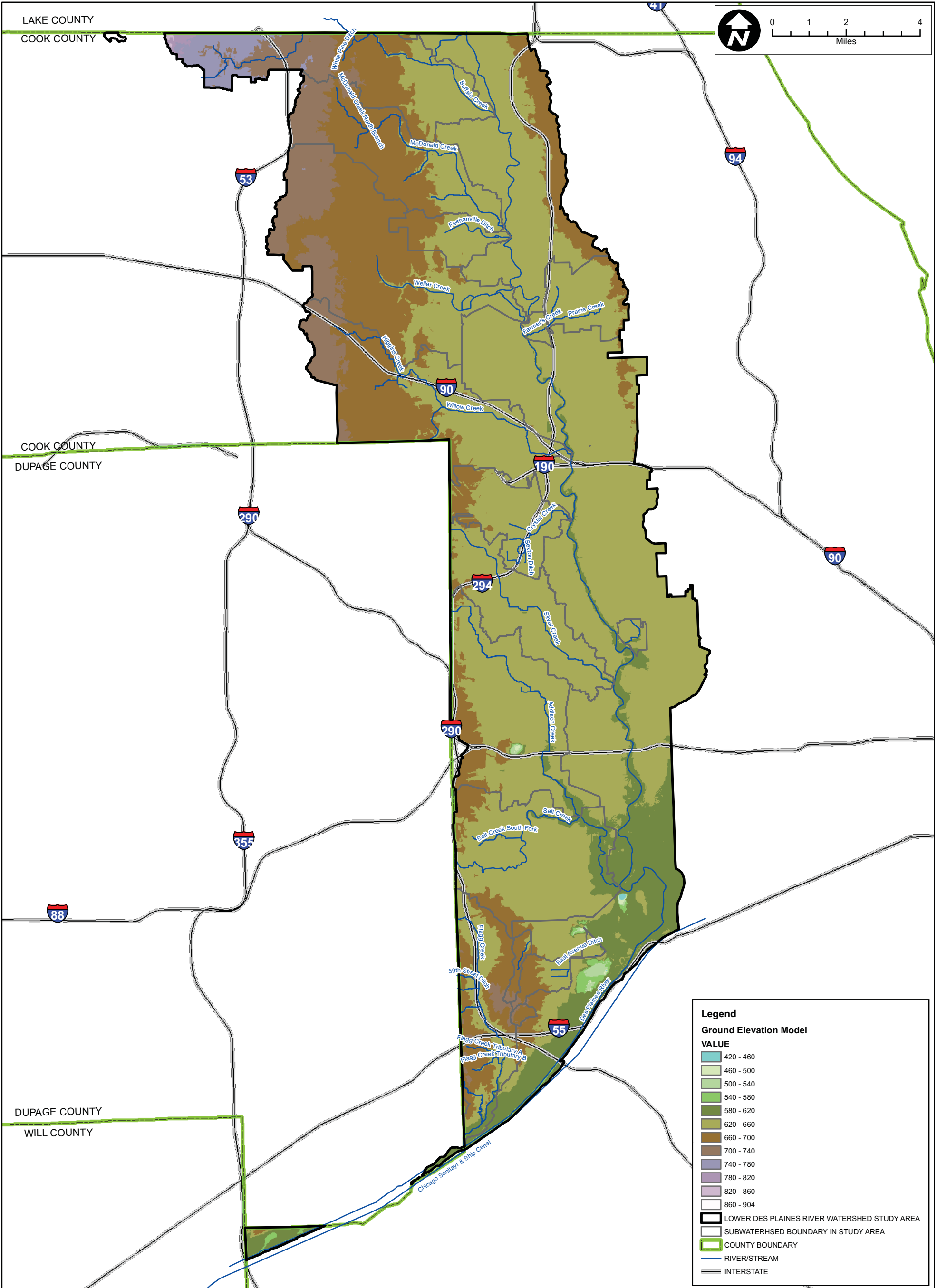
FIGURE 2.3.2



CHRISTOPHER B. BURKE ENGINEERING, LTD.
9575 W. Higgins Road, Suite 600 · Rosemont, Illinois 60018 · (847) 823-0500

DSGN.		SCALE:	
DWN.		GIS USER	MHAYES
CHKD.		PLOT DATE	
FILE:			

Map Document: (Z:\MWRD\GC\08-0043 Phase B\Water\Des Plaines\exhibits\Subwatershed Delineation.mxd) 11/22/2010 -- 2:46:31 PM



CLIENT:
METROPOLITAN WATER RECLAMATION DISTRICT OF GREATER CHICAGO

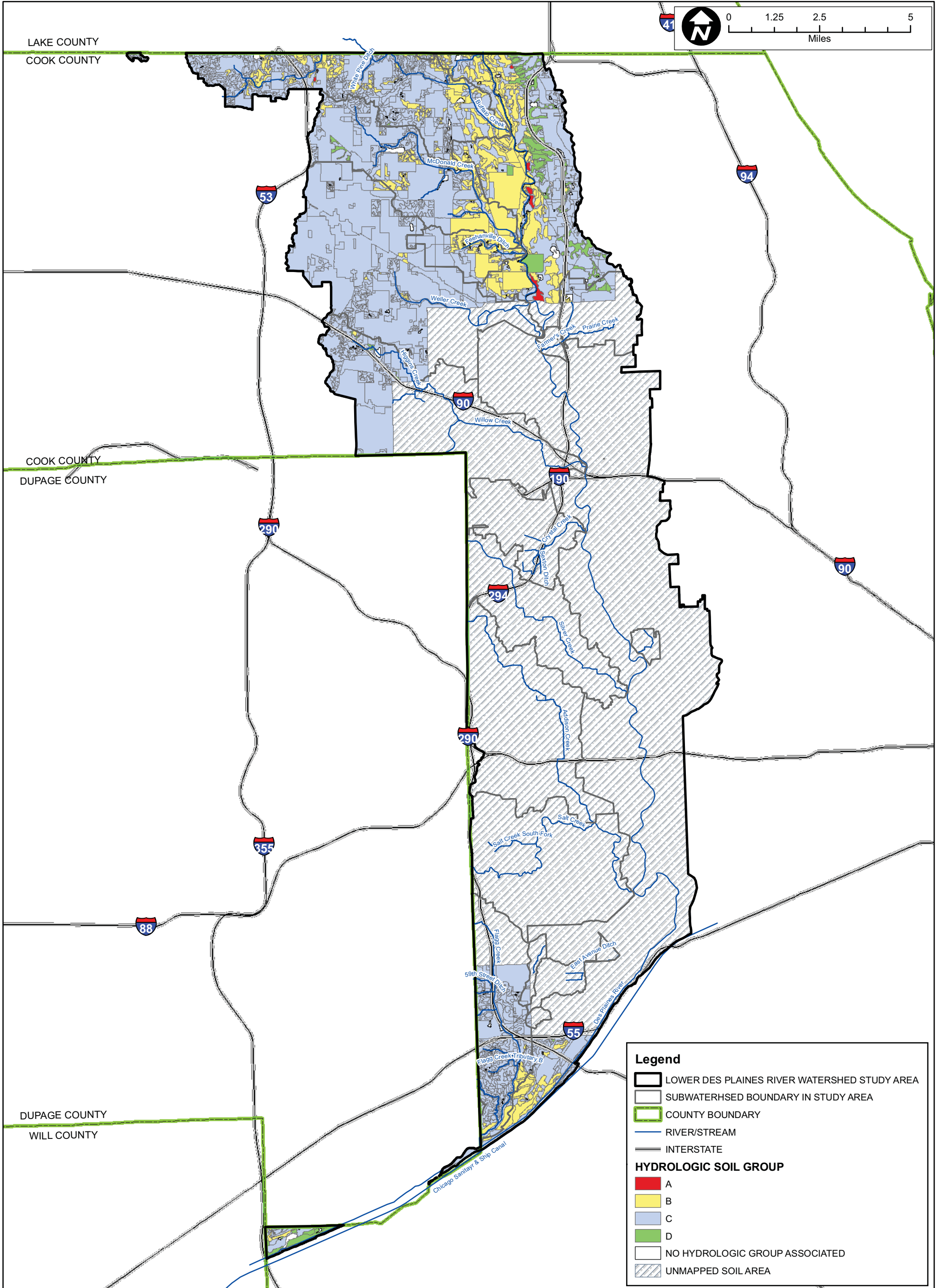
TITLE:
LOWER DES PLAINES RIVER WATERSHED TOPOGRAPHY AND DRAINAGE NETWORK

PROJ. NO. 080043
 DATE: 09-13-2009
 SHEET 1 OF 1
 DRAWING NO.

CB CHRISTOPHER B. BURKE ENGINEERING, LTD.
 9575 W. Higgins Road, Suite 600 · Rosemont, Illinois 60018 · (847) 823-0500

DSGN.		SCALE:	
DWN.		GIS USER	MHAYES
CHKD.		PLOT DATE	
FILE:			

FIGURE 2.3.3



CLIENT:
METROPOLITAN WATER RECLAMATION DISTRICT OF GREATER CHICAGO

TITLE:
LOWER DES PLAINES RIVER WATERSHED HYDROLOGIC SOILS GROUPS

PROJ. NO. 080043
 DATE: 09-13-2009
 SHEET 1 OF 1
 DRAWING NO.

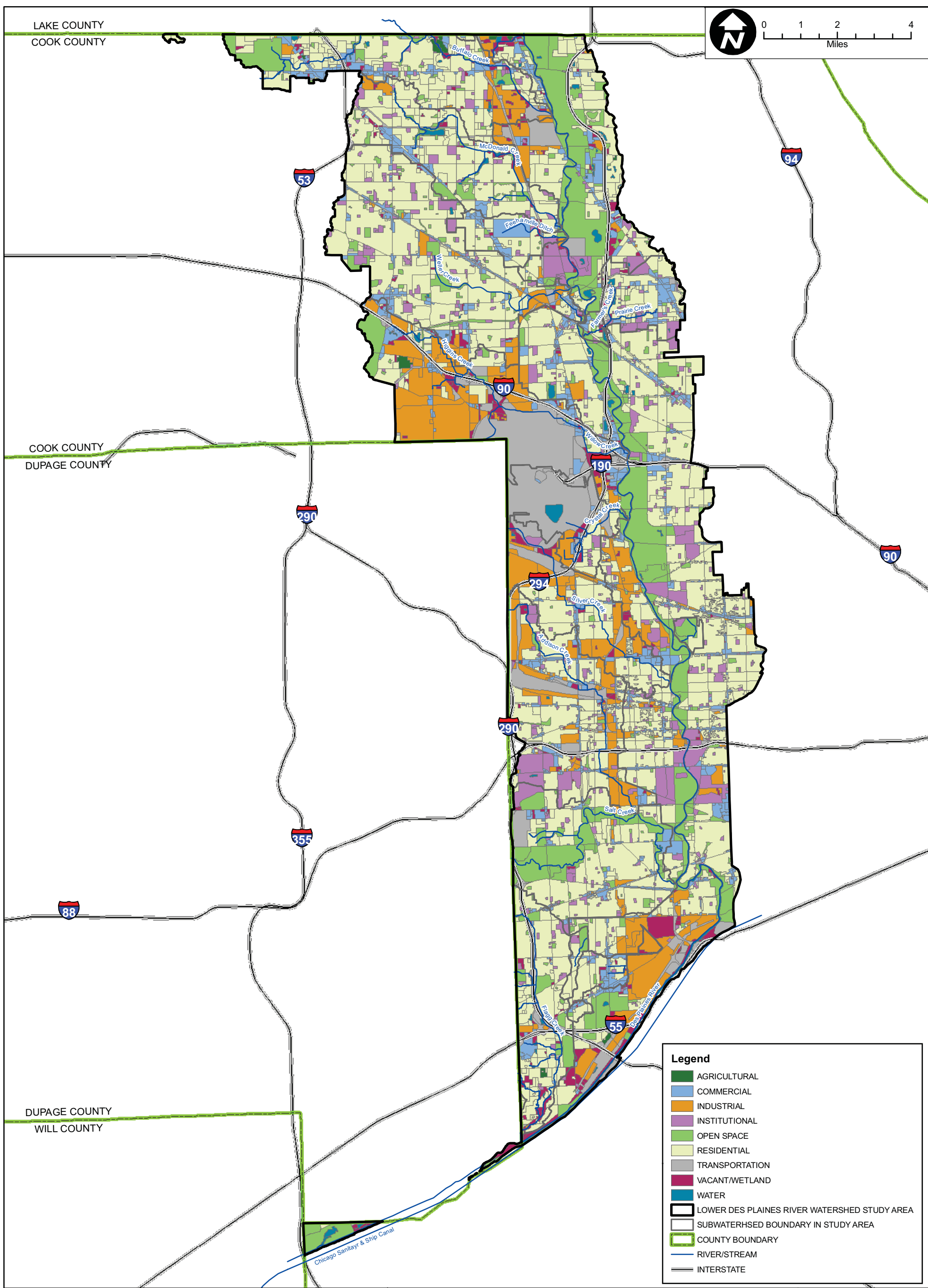
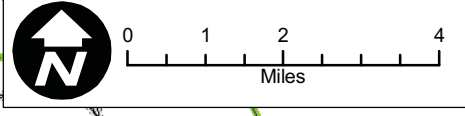


CHRISTOPHER B. BURKE ENGINEERING, LTD.
 9575 W. Higgins Road, Suite 600 • Rosemont, Illinois 60018 • (847) 823-0500

DSGN.		SCALE:	
DWN.		GIS USER	MHAYES
CHKD.		PLOT DATE	
FILE:			

FIGURE 2.3.4

LAKE COUNTY
COOK COUNTY



Legend

- AGRICULTURAL
- COMMERCIAL
- INDUSTRIAL
- INSTITUTIONAL
- OPEN SPACE
- RESIDENTIAL
- TRANSPORTATION
- VACANT/WETLAND
- WATER
- LOWER DES PLAINES RIVER WATERSHED STUDY AREA
- SUBWATERSHED BOUNDARY IN STUDY AREA
- COUNTY BOUNDARY
- RIVER/STREAM
- INTERSTATE

CLIENT:
METROPOLITAN WATER RECLAMATION DISTRICT OF GREATER CHICAGO

TITLE:
LOWER DES PLAINES RIVER WATERSHED LANDUSE

PROJ. NO. 080043
DATE: 09-13-2009
SHEET 1 OF 1
DRAWING NO.

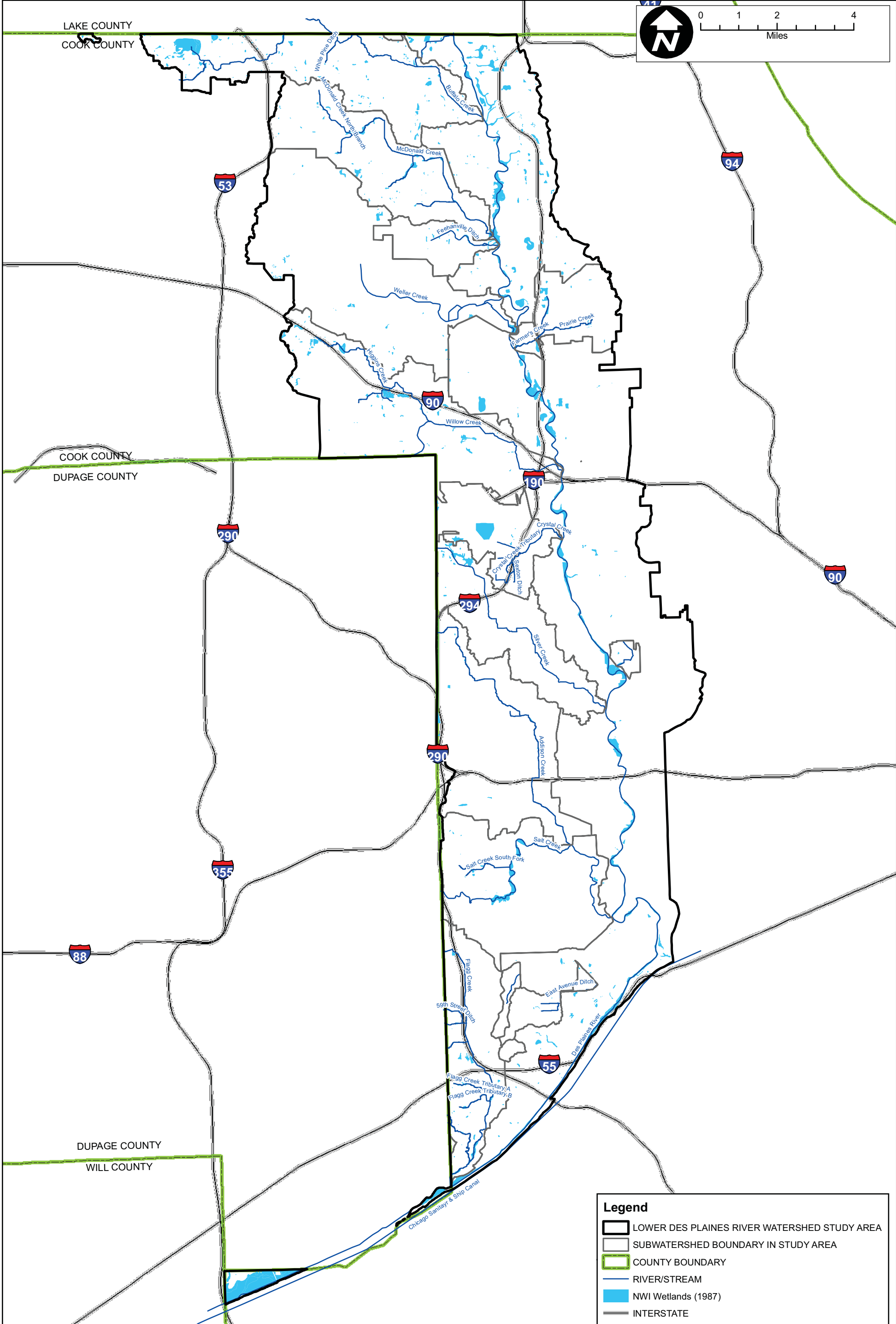
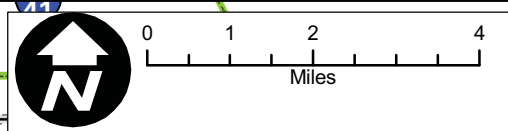
CB CHRISTOPHER B. BURKE ENGINEERING, LTD.
9575 W. Higgins Road, Suite 600 • Rosemont, Illinois 60018 • (847) 823-0500

DSGN.		SCALE:	
DWN.		GIS USER	MHAYES
CHKD.		PLOT DATE	
FILE:			

FIGURE 2.3.5

Map Document: (Z:\MWRD\GC\08-0043 Phase B\Water\Des Plaines\exhibits\Landuse.mxd) 11/18/2010 -- 3:35:49 PM

LAKE COUNTY
COOK COUNTY



Legend

- LOWER DES PLAINES RIVER WATERSHED STUDY AREA
- SUBWATERSHED BOUNDARY IN STUDY AREA
- COUNTY BOUNDARY
- RIVER/STREAM
- NWI Wetlands (1987)
- INTERSTATE

CLIENT:
METROPOLITAN WATER RECLAMATION DISTRICT OF GREATER CHICAGO

TITLE:
LOWER DES PLAINES RIVER WATERSHED NATIONAL WETLAND INVENTORY

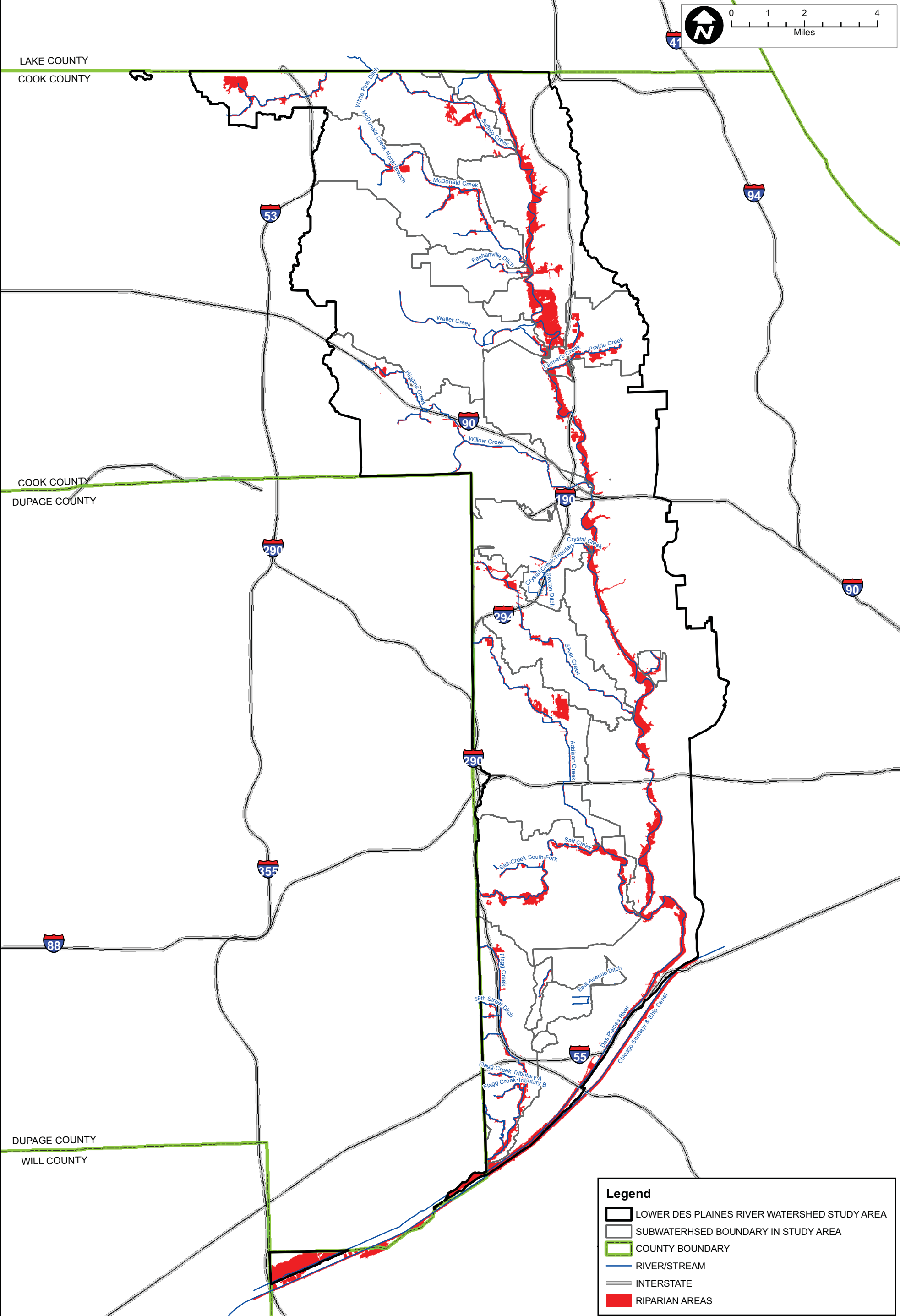
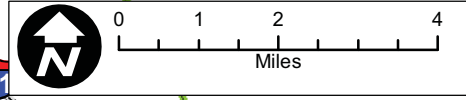
PROJ. NO. 080043
DATE: 09-13-2009
SHEET 1 OF 1
DRAWING NO.

CB CHRISTOPHER B. BURKE ENGINEERING, LTD.
9575 W. Higgins Road, Suite 600 · Rosemont, Illinois 60018 · (847) 823-0500

DSGN.		SCALE:	
DWN.		GIS USER	MHAYES
CHKD.		PLOT DATE	
FILE:			

FIGURE 2.3.6

Map Document: (Z:\MWRD\G08-0043 Phase B\Water\Des Plaines\exhibits\National Wetland Inventory.mxd) 11/18/2010 -- 3:49:22 PM



Legend

- LOWER DES PLAINES RIVER WATERSHED STUDY AREA
- SUBWATERSHED BOUNDARY IN STUDY AREA
- COUNTY BOUNDARY
- RIVER/STREAM
- INTERSTATE
- RIPARIAN AREAS

CLIENT:
METROPOLITAN WATER RECLAMATION DISTRICT OF GREATER CHICAGO

TITLE:
LOWER DES PLAINES RIVER WATERSHED RIPARIAN AREAS

PROJ. NO. 080043
 DATE: 09-13-2009
 SHEET 1 OF 1
 DRAWING NO.

CB **CHRISTOPHER B. BURKE ENGINEERING, LTD.**
 9575 W. Higgins Road, Suite 600 · Rosemont, Illinois 60018 · (847) 823-0500

DSGN.		SCALE:	
DWN.		GIS USER	MHAYES
CHKD.		PLOT DATE	
FILE:			

FIGURE 2.3.7

Map Document: (Z:\MWRDGC\08-0043 Phase B\Water\Des Plaines\exhibits\Watershed Riparian Areas.mxd) 11/18/2010 -- 4:13:00 PM