

Figure 2.1.1

LITTLE CALUMET RIVER WATERSHED OVERVIEW MAP

Little Calumet River DWP

December, 2009

- Stream Centerlines
- Flood Control Facilities
- County Boundaries
- Sub-Watersheds**
 - Butterfield Creek
 - Cady Marsh Ditch
 - Calumet Union Drainage
 - Deer Creek
 - Hart Ditch
 - Little Calumet River
 - Midlothian/Natalie Creeks
 - North Creek
 - Plum Creek
 - Thorn Creek



1 inch = 12,000 feet

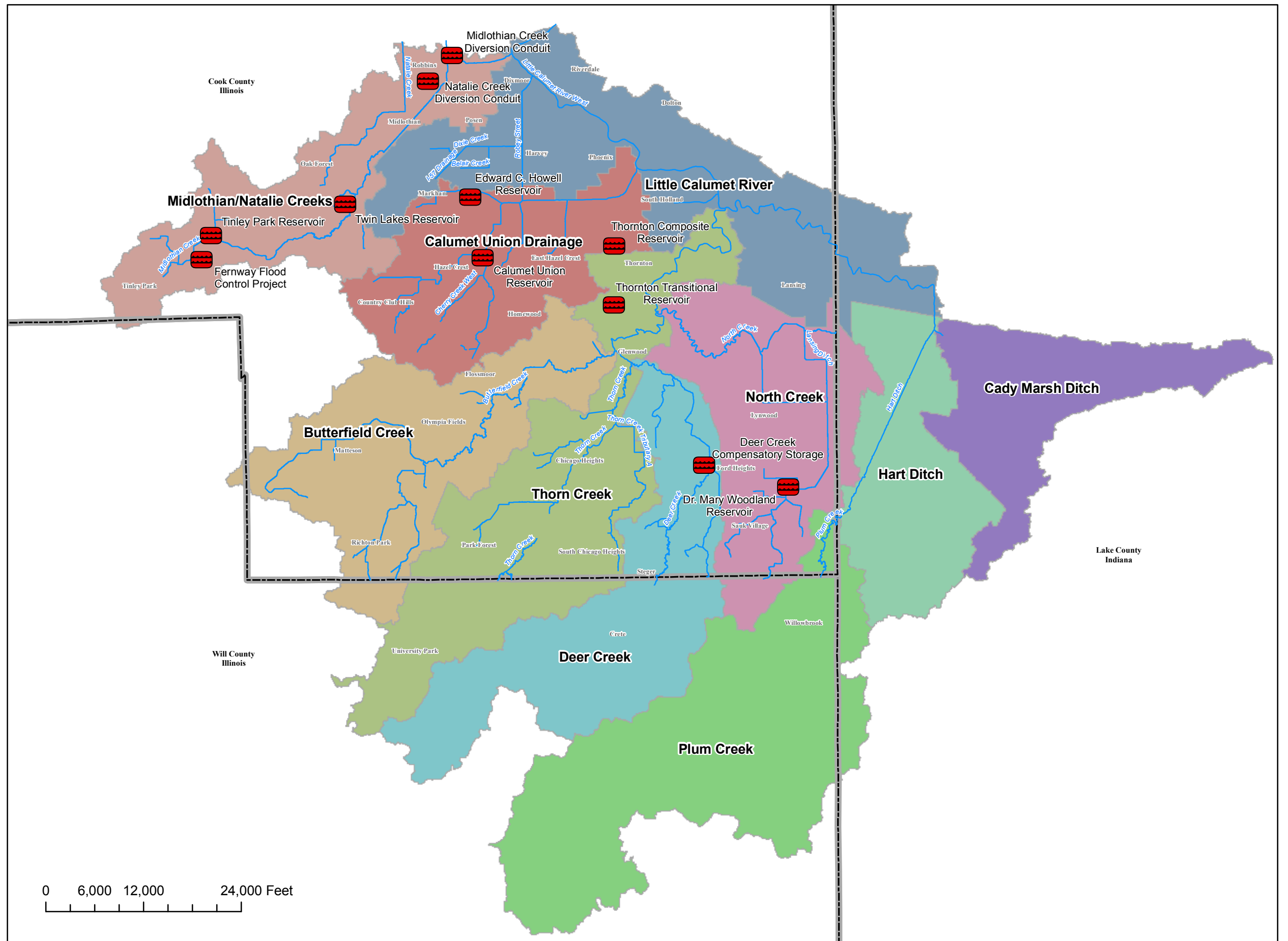


Figure 2.2.1

LITTLE CALUMET RIVER WATERSHED PROBLEM LOCATIONS

Little Calumet River DWP

December, 2009

Regional Problems

- Bank Erosion
- ▲ Maintenance
- Overbank Flooding
- ◆ Pavement Flooding

Local Problems

- Bank Erosion
- ▲ Maintenance
- ◆ Pavement Flooding
- ◆ Storm Sewer Flow Restriction

- Stream Centerlines
- ▭ County Boundary

N



1 inch = 7,500 feet

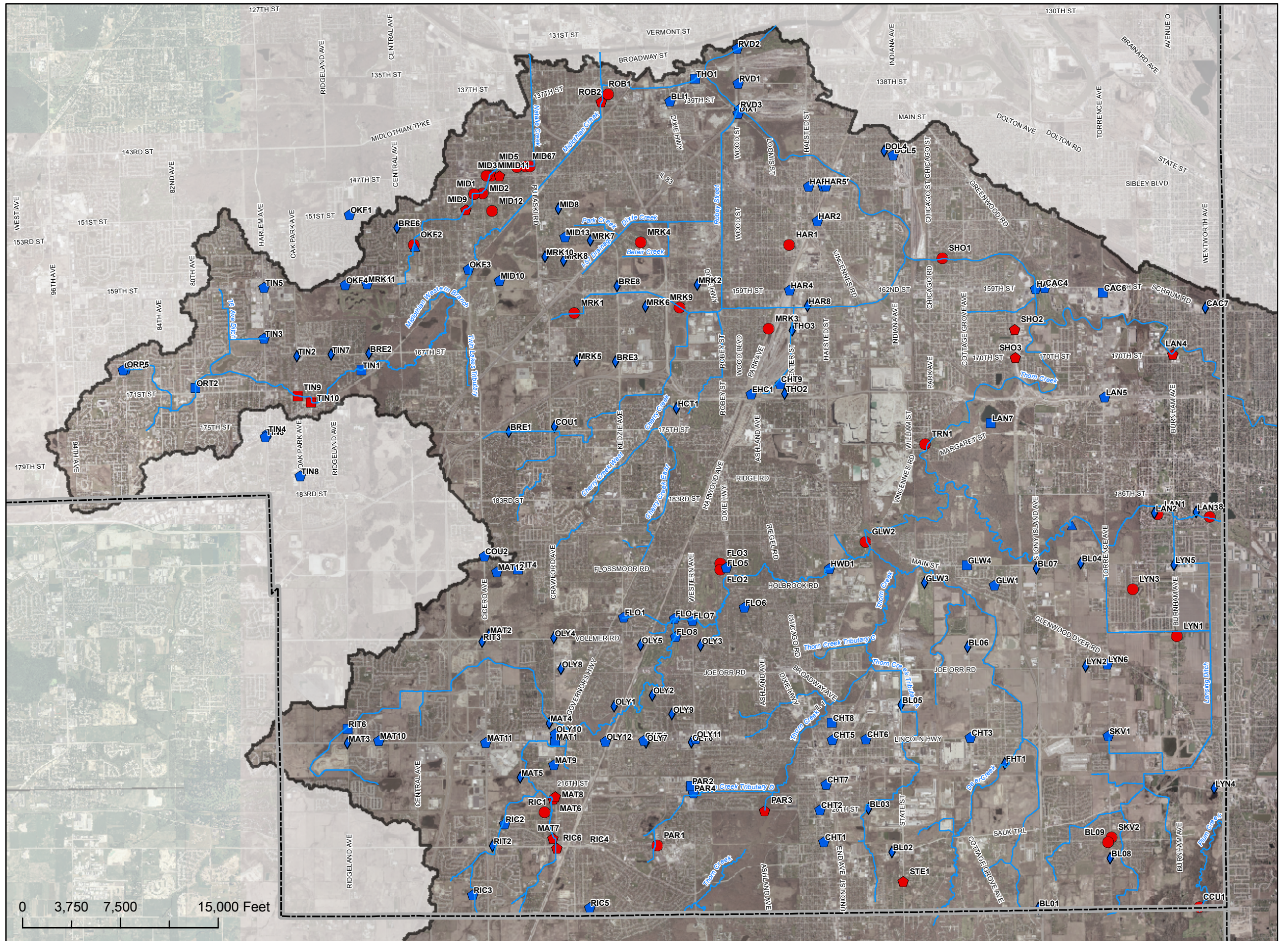


Figure 2.3.1

LITTLE CALUMET RIVER WATERSHED MONITORING LOCATIONS

Little Calumet River DWP

December, 2009

- ★ Stream Gauges
- Rain Gauges**
- CoCoRaHS
- ISWS
- NWS
- USGS
- Stream Centerlines
- Limited Access Highway
- Highway
- ▭ County Boundary

N



1 inch = 25,000 feet



0 12,500 25,000 50,000 Feet

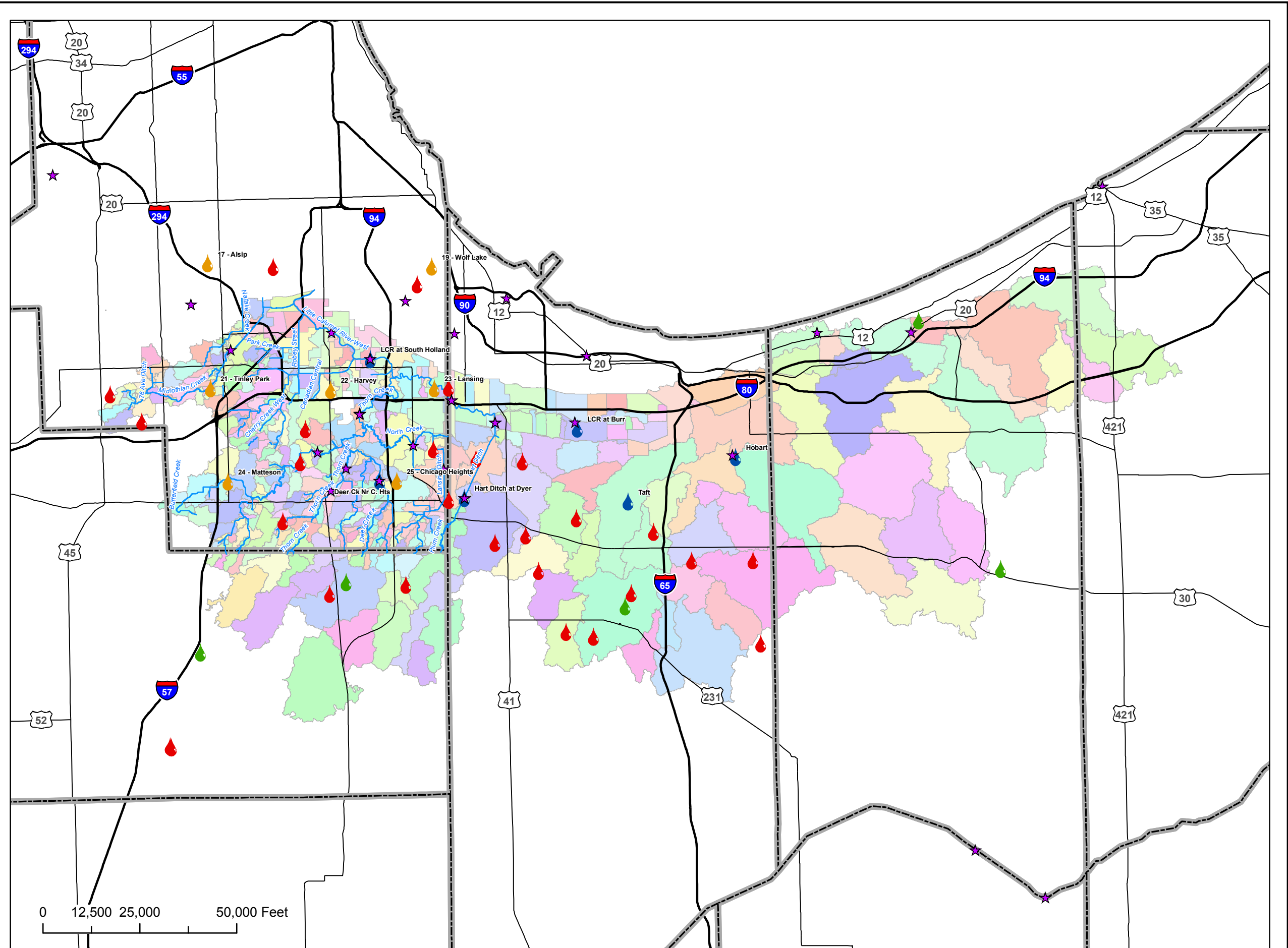


Figure 2.3.2

LITTLE CALUMET RIVER WATERSHED SUBBASINS

Little Calumet River DWP

December, 2009

- Limited Access Highway
- Highway
- ▭ County Boundary



1 inch = 25,000 feet

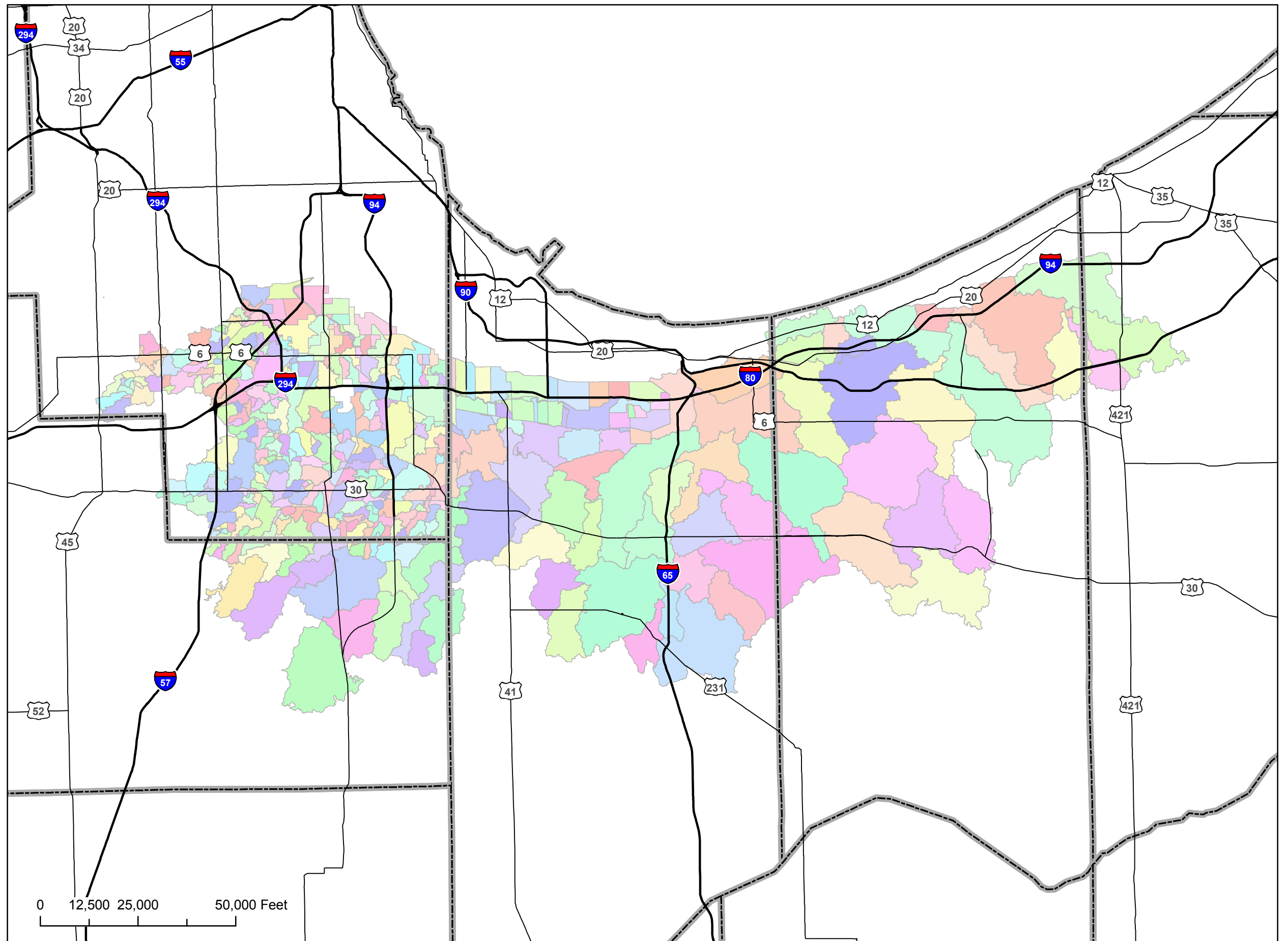





Figure 2.3.3

**LITTLE CALUMET RIVER
WATERSHED
TOPOGRAPHY AND
DRAINAGE NETWORK**

Little Calumet River DWP

December, 2009

-  Watershed Boundary
-  County Boundary
-  Stream Centerlines

N

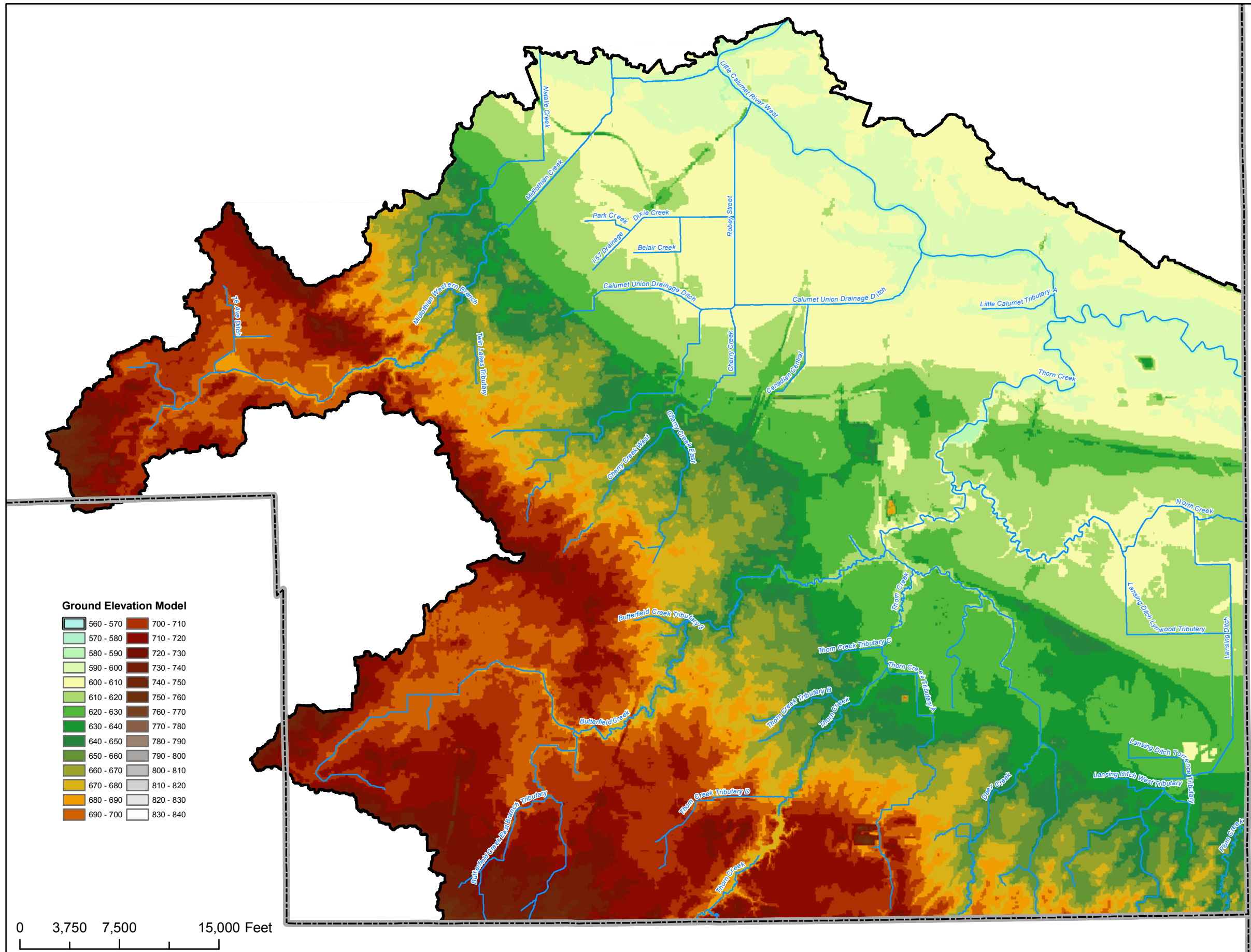


1 inch = 7,500 feet



Ground Elevation Model

560 - 570	700 - 710
570 - 580	710 - 720
580 - 590	720 - 730
590 - 600	730 - 740
600 - 610	740 - 750
610 - 620	750 - 760
620 - 630	760 - 770
630 - 640	770 - 780
640 - 650	780 - 790
650 - 660	790 - 800
660 - 670	800 - 810
670 - 680	810 - 820
680 - 690	820 - 830
690 - 700	830 - 840



0 3,750 7,500 15,000 Feet

Figure 2.3.4

LITTLE CALUMET RIVER WATERSHED SOILS

Little Calumet River DWP

December, 2009

-  Subbasin
- Soil Group**
-  Unmapped
-  A
-  A/D
-  B
-  B/D
-  C
-  C/D
-  D
-  County Boundary



1 inch = 25,000 feet

