

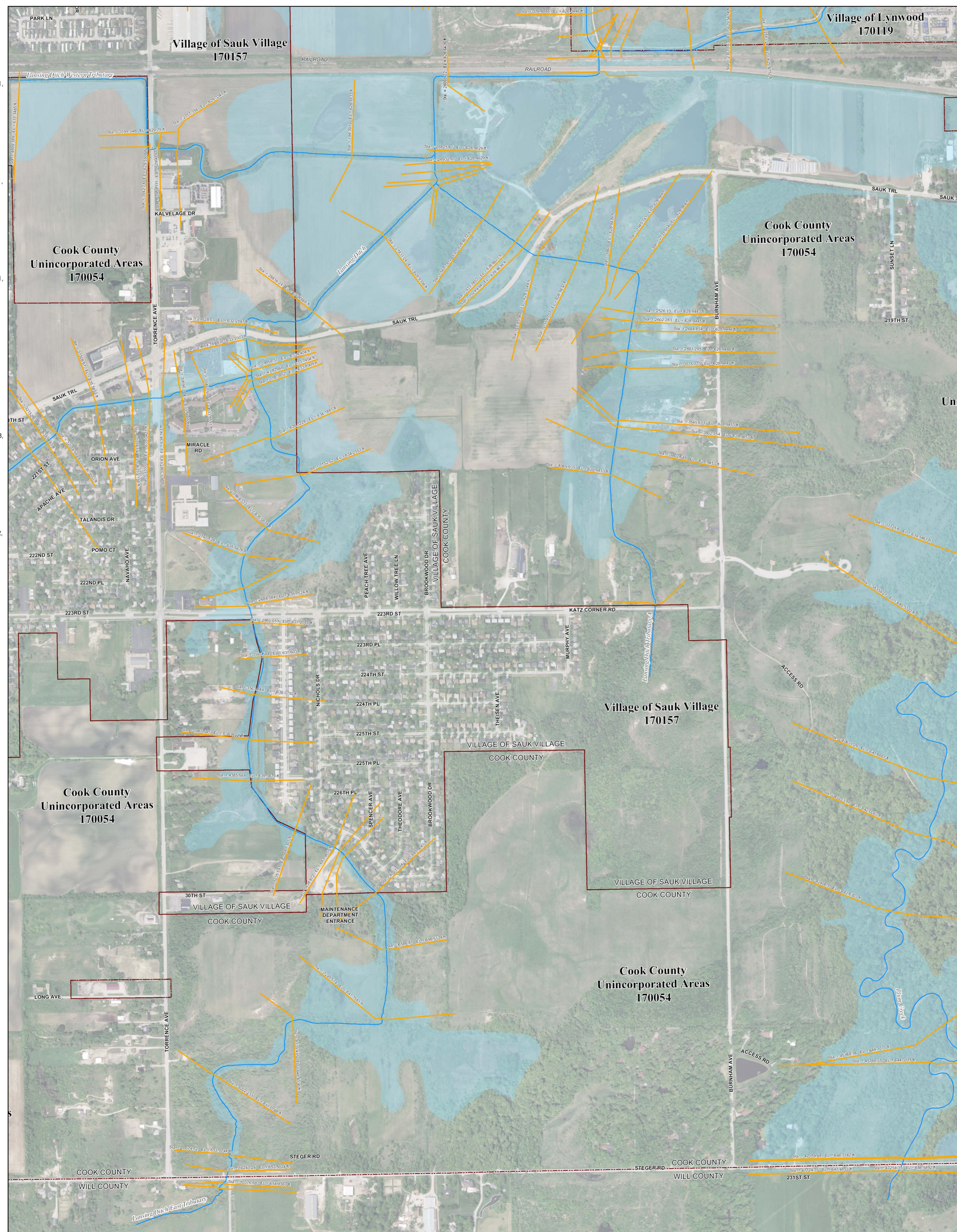
Municipality Index

Alsip: 0609, 0617, 0628, 0636, 0637, 0638, 0639	La Grange Park: 0478
Arlington Heights: 0044, 0063, 0064, 0182, 0184, 0192, 0201, 0202, 0203, 0204, 0211, 0212	La Grange: 0478, 0486
Barrington Hills: 0015, 0020, 0155, 0156, 0157	Lansing: 0754, 0756, 0758, 0759, 0762, 0766, 0767
Barrington: 0020, 0038	Lemont: 0567, 0569, 0579, 0583, 0586, 0587, 0588, 0589, 0591, 0593
Bartlett: 0144, 0163, 0164, 0168, 0285, 0305, 0306	Lincolnwood: 0244, 0265, 0382, 0401, 0402
Bedford Park: 0487, 0488, 0489, 0495, 0515, 0606	Lynwood: 0762, 0764, 0766, 0767, 0768, 0769, 0831, 0832
Bellwood: 0369, 0388, 0457, 0476	Lyons: 0479, 0483, 0487, 0491
Bensenville: 0358	Markham: 0726, 0727, 0729, 0731, 0732, 0733, 0734
Berkeley: 0368, 0369, 0456	Mattoon: 0718, 0719, 0738, 0739, 0781, 0782, 0801, 0802
Berwyn: 0483, 0484, 0485	Maywood: 0388, 0389, 0476, 0477
Blue Island: 0637, 0639, 0643, 0644, 0645	Mc Cook: 0486, 0487, 0491
Broadview: 0476, 0477	Melrose Park: 0367, 0369, 0386, 0387, 0388, 0389
Brookfield: 0478, 0479, 0486, 0487	Merrionette Park: 0630, 0637
Buffalo Grove: 0663, 0664	Midlothian: 0619, 0638, 0639, 0707, 0726, 0727
Burbank: 0495, 0515, 0606, 0607, 0630	Morton Grove: 0237, 0241, 0242, 0243, 0244
Burnham: 0664, 0668, 0669	Mount Prospect: 0202, 0203, 0204, 0206, 0207, 0208, 0209, 0211, 0212, 0214, 0216
Burr Ridge: 0466, 0468, 0469, 0561, 0562	Niles: 0236, 0237, 0238, 0239, 0241, 0243, 0244
Calumet City: 0664, 0668, 0669, 0752, 0754, 0756, 0757, 0758, 0759	Northridge: 0376, 0379, 0380, 0385
Chicago Park: 0643, 0644, 0645	North Riverside: 0476, 0477, 0479, 0483, 0485
Chicago Heights: 0742, 0743, 0744, 0763, 0806, 0807, 0826	Northbrook: 0069, 0088, 0089, 0093, 0207, 0226, 0227, 0231, 0232
Chicago Ridge: 0606, 0607, 0608, 0609	Northfield: 0231, 0232, 0233, 0234
Clarendon Hills: 0214, 0218, 0219, 0239, 0243, 0244, 0265, 0270, 0352	Northlake: 0366, 0367, 0368, 0369
Cicero: 0356, 0357, 0358, 0359, 0376, 0378, 0380, 0382, 0385, 0386, 0387, 0395, 0401, 0402, 0403, 0404, 0410, 0415, 0416, 0417, 0418, 0419	Oak Forest: 0618, 0619, 0706, 0707, 0709, 0726, 0727, 0728, 0729
Clayton: 0438, 0440, 0484, 0485, 0491, 0492, 0495, 0503, 0504, 0505, 0506	Oak Lawn: 0606, 0607, 0608, 0609, 0617, 0628, 0630
Country Club Hills: 0728, 0729, 0736, 0737	Oak Park: 0395, 0485
Country Hills: 0467, 0469, 0486, 0488	Olympia Fields: 0739, 0743
Crestwood: 0617, 0619, 0636, 0638, 0639	Orland Hills: 0701, 0702, 0703, 0704
Deerfield: 0069, 0088, 0089	Orland Park: 0593, 0594, 0613, 0614, 0618, 0682, 0684, 0692, 0701, 0702, 0703, 0704, 0706, 0711
Des Plaines: 0208, 0209, 0212, 0214, 0216, 0217, 0218, 0219, 0236, 0238, 0357, 0376	Palatine: 0038, 0039, 0043, 0044, 0177, 0179, 0181, 0182, 0183
Diamond: 0643, 0644, 0731	Palos Heights: 0612, 0614, 0616, 0617, 0618, 0619
Dolton: 0644, 0663, 0664, 0732, 0751, 0752	Palos Hills: 0603, 0604, 0608, 0611, 0612, 0616
East Dundee: 0155	Palos Park: 0592, 0594, 0611, 0612, 0613, 0614, 0616
East Hazel Crest: 0733, 0734	Park Forest: 0739, 0743, 0802, 0806, 0807
Elgin: 0135, 0142, 0144, 0155, 0161, 0163, 0305	Park Ridge: 0236, 0237, 0238, 0239, 0376, 0380
Elk Grove Village: 0193, 0194, 0211, 0213, 0214, 0218, 0331, 0332, 0351, 0352	Phoenix: 0732, 0751
Elmhurst: 0456	Posen: 0639, 0643, 0727, 0731
Elmwood Park: 0380, 0387, 0395	Prospect Heights: 0201, 0202, 0206, 0207, 0208
Evanston: 0253, 0255, 0260, 0265, 0270	Richton Park: 0781, 0782, 0801, 0802
Evergreen Park: 0628, 0630, 0635	River Forest: 0367, 0369, 0395
Flossmoor: 0737, 0739, 0741, 0742, 0743, 0744	River Grove: 0380, 0386, 0387
Ford Heights: 0763, 0764, 0768, 0826, 0827	Riverside: 0643, 0644, 0645, 0661, 0663
Forest Park: 0389, 0395, 0477, 0485	Riverside: 0479, 0483
Forest View: 0484, 0491, 0492	Robbins: 0638, 0639
Frankfort: 0781, 0782	Rolling Meadows: 0179, 0181, 0182, 0183, 0184, 0191, 0192, 0211
Franklin Park: 0358, 0359, 0366, 0367, 0378, 0386	Roselle: 0193, 0330, 0331
Glencoe: 0093, 0094, 0113, 0231, 0232, 0251	Rosemont: 0219, 0357, 0376
Glenview: 0207, 0209, 0226, 0227, 0228, 0229, 0231, 0233, 0234, 0236, 0237, 0241	Sauk Village: 0754, 0759, 0826, 0827, 0831
Glenwood: 0742, 0761, 0762, 0763, 0764	Schaumburg: 0167, 0169, 0179, 0183, 0184, 0186, 0187, 0188, 0189, 0191, 0192, 0193, 0194, 0307, 0330
Golf: 0233, 0234, 0241, 0242	Schiller Park: 0357, 0359, 0376, 0378
Hanover Park: 0168, 0169, 0306, 0307	Skokie: 0234, 0242, 0244, 0253, 0265
Harvey: 0643, 0644, 0731, 0732, 0734, 0751	South Barrington: 0155, 0156, 0157, 0158, 0159, 0176, 0178
Harwood Heights: 0380, 0385	South Chicago Heights: 0807, 0826
Hazel Crest: 0729, 0733, 0734, 0737	South Holland: 0732, 0734, 0751, 0752, 0753, 0754
Hickory Hills: 0601, 0602, 0603, 0604, 0606, 0608	Steger: 0807, 0826, 0827
Hillside: 0368, 0369, 0456, 0457	Stickney: 0483, 0484, 0491, 0503
Hinsdale: 0458, 0466, 0467, 0469, 0469	Stone Park: 0367, 0369, 0386, 0388
Hodgkins: 0469, 0469, 0487, 0488, 0489, 0490, 0491, 0492	Streamwood: 0162, 0163, 0164, 0166, 0167, 0168, 0169, 0306
Hoffman Estates: 0155, 0157, 0158, 0159, 0161, 0162, 0166, 0167, 0176, 0178, 0186, 0187, 0188, 0189, 0191	Summit: 0487, 0488, 0491, 0495
Homewood: 0630	Thornton: 0734, 0742, 0753, 0761
Homewood: 0729, 0733, 0734, 0737, 0741, 0742	Triley Park: 0702, 0703, 0704, 0706, 0707, 0708, 0709, 0711, 0712, 0716, 0717, 0719
Indian Head Park: 0468, 0469	University Park: 0801
Inverness: 0020, 0038, 0039, 0157, 0176, 0177, 0178, 0179	Westchester: 0456, 0457, 0458, 0459, 0476
Justice: 0488, 0489, 0601, 0602	Western Springs: 0458, 0459, 0460, 0467, 0468, 0469
La Grange Park: 0459, 0476	Wheeling: 0064, 0068, 0069, 0202, 0206, 0207
La Grange: 0459, 0467	Willow Springs: 0469, 0488, 0581, 0582, 0583, 0584, 0601
	Wilmette: 0234, 0253, 0255, 0260
	Wilmot: 0113, 0232, 0251, 0253, 0255
	Worth: 0608, 0609, 0616, 0617

Panel Index

0015	0020	0025	0030	0035	0040	0045	0050	0055	0060	0065	0070	0075	0080	0085	0090	0095	0100	0105	0110	0115	0120	0125	0130	0135	0140	0145	0150	0155	0160	0165	0170	0175	0180	0185	0190	0195	0200	0205	0210	0215	0220	0225	0230	0235	0240	0245	0250	0255	0260	0265	0270	0275	0280	0285	0290	0295	0300	0305	0310	0315	0320	0325	0330	0335	0340	0345	0350	0355	0360	0365	0370	0375	0380	0385	0390	0395	0400	0405	0410	0415	0420	0425	0430	0435	0440	0445	0450	0455	0460	0465	0470	0475	0480	0485	0490	0495	0500	0505	0510	0515	0520	0525	0530	0535	0540	0545	0550	0555	0560	0565	0570	0575	0580	0585	0590	0595	0600	0605	0610	0615	0620	0625	0630	0635	0640	0645	0650	0655	0660	0665	0670	0675	0680	0685	0690	0695	0700	0705	0710	0715	0720	0725	0730	0735	0740	0745	0750	0755	0760	0765	0770	0775	0780	0785	0790	0795	0800	0805	0810	0815	0820	0825	0830	0835	0840	0845	0850	0855	0860	0865	0870	0875	0880	0885	0890	0895	0900	0905	0910	0915	0920	0925	0930	0935	0940	0945	0950	0955	0960	0965	0970	0975	0980	0985	0990	0995	1000
------	------	------	------	------	------	------	------	------	------	------	------	------	------	------	------	------	------	------	------	------	------	------	------	------	------	------	------	------	------	------	------	------	------	------	------	------	------	------	------	------	------	------	------	------	------	------	------	------	------	------	------	------	------	------	------	------	------	------	------	------	------	------	------	------	------	------	------	------	------	------	------	------	------	------	------	------	------	------	------	------	------	------	------	------	------	------	------	------	------	------	------	------	------	------	------	------	------	------	------	------	------	------	------	------	------	------	------	------	------	------	------	------	------	------	------	------	------	------	------	------	------	------	------	------	------	------	------	------	------	------	------	------	------	------	------	------	------	------	------	------	------	------	------	------	------	------	------	------	------	------	------	------	------	------	------	------	------	------	------	------	------	------	------	------	------	------	------	------	------	------	------	------	------	------	------	------	------	------	------	------	------	------	------	------	------	------	------	------	------	------	------	------	------	------	------	------	------

Not available. Contact MWRD for further information



NOTES TO USER:

The inundation areas and water surface elevations shown on this map were developed as part of the Metropolitan Water Reclamation District of Greater Chicago's (MWRD) Stormwater Management Program. Specific details regarding the development of the new models used to generate the maps are described in MWRD's Detailed Watershed Plans, which are available for download at www.mwrdd.org. To access, click on "Services & Facilities" in the top navigation bar, click on "Stormwater Management", and then click on "Stormwater Annual Reports and Publications" on the left navigation bar of the Stormwater Management webpage.

This map does not delineate floodways. The information contained on this map is in addition to and does not substitute for the relevant Federal Emergency Management Agency's (FEMA) Flood Insurance Study (FIS) and associated Flood Insurance Rate Map (FIRM).

Elevations stated on this map are consistent with the North American Vertical Datum (NAVD) 1988. Flood elevations must be compared to ground structures referenced to the same datum. Hydraulic profiles of modeled waterways are available for download at www.mwrdd.org. To access, click on "Services & Facilities" in the top navigation bar, click on "Stormwater Management", and then click on "Inundation Maps & Profiles" on the left navigation bar of the Stormwater Management webpage.

The corporate limits shown on this map are based on the best information available at the time of study.

If you have questions on this map, please contact the MWRD's Engineering Department-Stormwater Management Section, at 312-751-5600, or via e-mail Stormwater@mwrdd.org.

- DWP 100-year (1% Chance) Inundation Area
- River/Stream
- Municipal Boundary

Cross Section (By Watershed)

- Calumet Sag Channel DWP
- DP
- Little Calumet River DWP
- NB
- PC
- Upper Salt Creek DWP



Cook County Inundation Map

Panel 0831

The area depicted in this map corresponds to FEMA's DFIRM Panel: 17031C0831J