

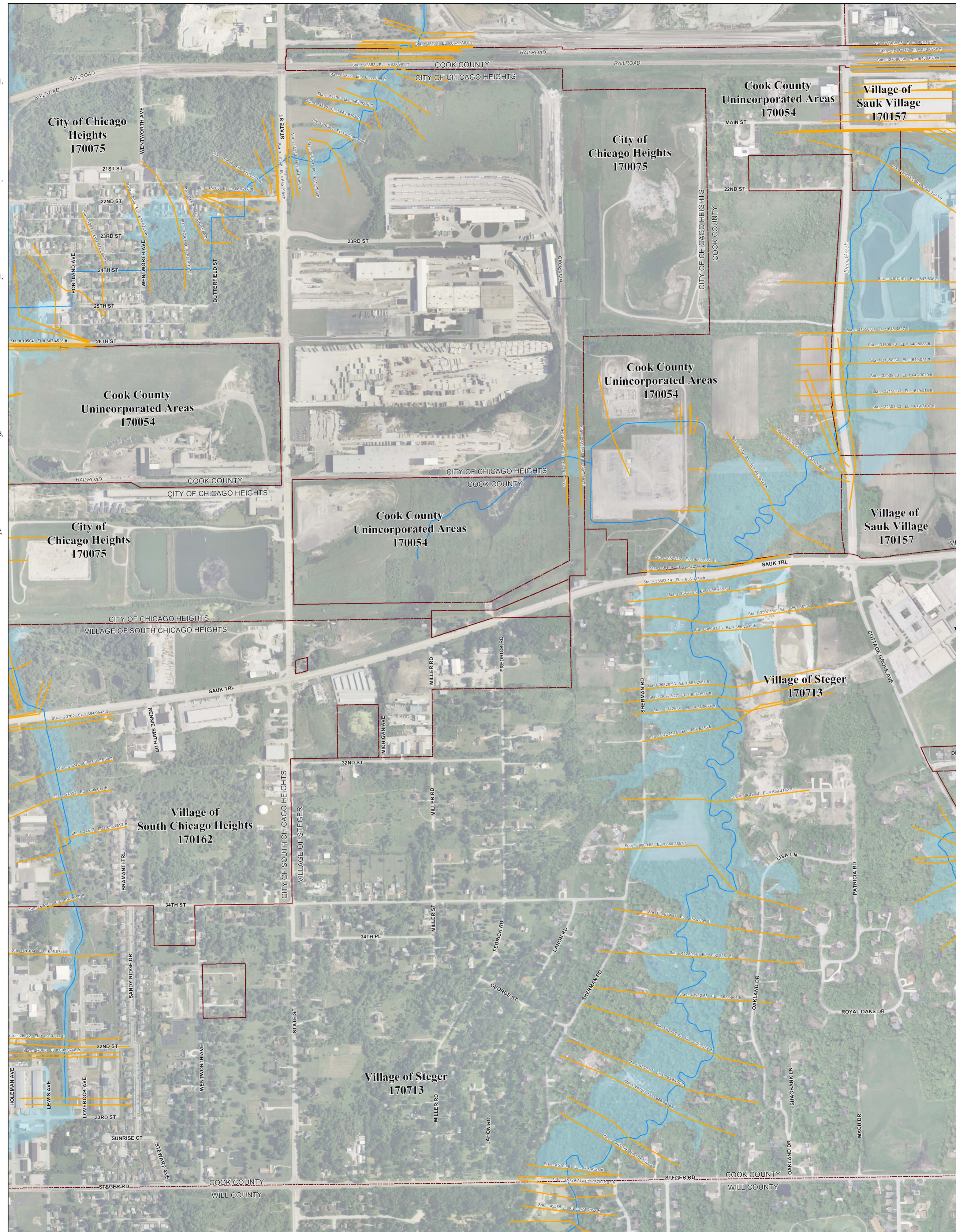
# Municipality Index

Alsip: 0609, 0617, 0628, 0636, 0637, 0638, 0639	La Grange Park: 0478
Arlington Heights: 0044, 0063, 0064, 0162, 0184, 0192, 0201, 0202, 0203, 0204, 0211, 0212	La Grange: 0478, 0486
Barrington Hills: 0015, 0020, 0155, 0156, 0157	Lansing: 0754, 0756, 0758, 0759, 0762, 0766, 0767
Barrington: 0220, 0238	Lenont: 0567, 0569, 0579, 0583, 0586, 0587, 0588, 0589, 0591, 0593
Bartlett: 0144, 0163, 0164, 0168, 0285, 0305, 0306	Lincolnwood: 0244, 0265, 0382, 0401, 0402
Bedford Park: 0487, 0488, 0489, 0495, 0515, 0606	Lymwood: 0762, 0764, 0766, 0767, 0768, 0769, 0831, 0832
Bellwood: 0369, 0388, 0457, 0476	Lyons: 0479, 0483, 0487, 0491
Bensenville: 0359	Markham: 0726, 0727, 0731, 0732, 0733, 0734
Berkeley: 0368, 0369, 0456	Metairie: 0718, 0719, 0738, 0739, 0781, 0782, 0801, 0802
Berwyn: 0483, 0484, 0485	Maywood: 0388, 0389, 0476, 0477
Blue Island: 0637, 0639, 0643, 0644, 0645	Mc Cook: 0486, 0487, 0491
Brookfield: 0606, 0607, 0608, 0609	Melrose Park: 0367, 0369, 0386, 0387, 0388, 0389
Buffalo Grove: 0653, 0654	Merrionette Park: 0630, 0637
Burbank: 0495, 0515, 0606, 0607, 0630	Midlothian: 0619, 0638, 0639, 0707, 0726, 0727
Burnham: 0664, 0668, 0669	Morton Grove: 0237, 0241, 0242, 0243, 0244
Burr Ridge: 0466, 0468, 0469, 0581, 0582	Mount Prospect: 0202, 0203, 0204, 0206, 0207, 0208, 0209, 0211, 0212, 0214, 0216
Calumet City: 0664, 0668, 0669, 0752, 0754, 0756, 0757, 0758, 0759	Niles: 0236, 0237, 0238, 0239, 0241, 0243, 0244
Chicago Heights: 0742, 0743, 0744, 0763, 0806, 0807, 0826	Northridge: 0376, 0378, 0380, 0385
Chicago Ridge: 0606, 0607, 0608, 0609	North Riverside: 0476, 0477, 0479, 0483, 0485
Chicago: 0214, 0218, 0219, 0239, 0243, 0244, 0265, 0270, 0352, 0356, 0357, 0358, 0359, 0376, 0378, 0380, 0382, 0385, 0386, 0387, 0388, 0389, 0401, 0402, 0403, 0404, 0410, 0415, 0416, 0417, 0418, 0419	Northbrook: 0669, 0688, 0689, 0693, 0207, 0225, 0227, 0231, 0232
Country Club Hills: 0728, 0729, 0736, 0737	Northfield: 0231, 0232, 0233, 0234
Countryside: 0467, 0469, 0486, 0488	Northlake: 0366, 0367, 0368, 0369
Crestwood: 0617, 0619, 0636, 0638, 0639	Oak Forest: 0618, 0619, 0706, 0707, 0709, 0726, 0727, 0728, 0729
Deer Park: 0039, 0039, 0043	Oak Lawn: 0606, 0607, 0608, 0609, 0617, 0628, 0630
Deerfield: 0069, 0088, 0089	Oak Park: 0395, 0485
Des Plaines: 0208, 0209, 0212, 0214, 0216, 0217, 0218, 0219, 0236, 0238, 0357, 0376	Olympia Fields: 0739, 0743
Diamond: 0643, 0644, 0731	Orland Hills: 0701, 0702, 0703, 0704
Dolton: 0644, 0663, 0664, 0732, 0751, 0752	Orland Park: 0593, 0594, 0613, 0614, 0618, 0682, 0684, 0692, 0701, 0702, 0703, 0704, 0706, 0711
East Dundee: 0155	Palatine: 0038, 0039, 0043, 0044, 0177, 0179, 0181, 0182, 0183
East Hazel Crest: 0733, 0734	Palos Heights: 0612, 0614, 0616, 0617, 0618, 0619
Elgin: 0135, 0142, 0144, 0155, 0161, 0163, 0305	Palos Hills: 0603, 0604, 0608, 0611, 0612, 0616
Elk Grove Village: 0193, 0194, 0211, 0213, 0214, 0218, 0331, 0332, 0351, 0352	Palos Park: 0592, 0594, 0611, 0612, 0613, 0614, 0616
Elmhurst: 0456	Park Forest: 0739, 0743, 0802, 0806, 0807
Elmwood Park: 0380, 0387, 0395	Park Ridge: 0236, 0237, 0238, 0239, 0376, 0380
Evanston: 0253, 0255, 0260, 0265, 0270	Phoenix: 0732, 0751
Evergreen Park: 0628, 0630, 0635	Posen: 0639, 0643, 0727, 0731
Flossmoor: 0737, 0739, 0741, 0742, 0743, 0744	Prospect Heights: 0201, 0202, 0206, 0207, 0208
Ford Heights: 0763, 0764, 0768, 0826, 0827	Richton Park: 0781, 0782, 0801, 0802
Forest Park: 0389, 0395, 0477, 0485	River Forest: 0367, 0369, 0395
Forest View: 0484, 0491, 0492	River Grove: 0380, 0386, 0387
Frankfort: 0761, 0762	Riversdale: 0643, 0644, 0645, 0661, 0663
Franklin Park: 0358, 0359, 0366, 0367, 0378, 0386	Riverside: 0479, 0483
Glencoe: 0093, 0094, 0113, 0231, 0232, 0251	Robbins: 0638, 0639
Glenside: 0207, 0209, 0226, 0227, 0228, 0229, 0231, 0233, 0234, 0236, 0237, 0241	Rolling Meadows: 0179, 0181, 0182, 0183, 0184, 0191, 0192, 0211
Glenwood: 0742, 0761, 0762, 0763, 0764	Roselle: 0193, 0330, 0331
Golf: 0233, 0234, 0241, 0242	Rosemont: 0219, 0357, 0376
Hanover Park: 0168, 0169, 0306, 0307	Sauk Village: 0754, 0759, 0826, 0827, 0831
Harvey: 0643, 0644, 0731, 0732, 0734, 0751	Schaumburg: 0167, 0169, 0179, 0183, 0184, 0186, 0187, 0188, 0189, 0191, 0192, 0193, 0194, 0307, 0330
Hazelwood: 0380, 0385	Schiller Park: 0357, 0359, 0376, 0378
Hazel Crest: 0729, 0733, 0734, 0737	Skokie: 0234, 0242, 0244, 0253, 0255
Hickory Hills: 0601, 0602, 0603, 0604, 0606, 0608	South Barrington: 0155, 0156, 0157, 0158, 0159, 0176, 0178
Hillside: 0368, 0369, 0456, 0457	South Chicago Heights: 0807, 0826
Hinsdale: 0458, 0466, 0467, 0468, 0469	South Holland: 0732, 0734, 0751, 0752, 0753, 0754
Hodgkins: 0469, 0469, 0467, 0468, 0469, 0467, 0468, 0469	Steger: 0807, 0826, 0827
Hoffman Estates: 0155, 0157, 0158, 0159, 0161, 0162, 0166, 0167, 0176, 0178, 0179, 0186, 0187, 0188, 0189, 0191	Stickney: 0483, 0484, 0491, 0503
Hometown: 0630	Stone Park: 0367, 0369, 0386, 0388
Homewood: 0729, 0733, 0734, 0737, 0741, 0742	Streamwood: 0162, 0163, 0164, 0166, 0167, 0168, 0169, 0306
Indian Head Park: 0468, 0469	Summit: 0487, 0488, 0491, 0495
Inverness: 0020, 0038, 0039, 0157, 0176, 0177, 0178, 0179	Thornton: 0734, 0742, 0753, 0761
Justice: 0488, 0489, 0601, 0602	Tinley Park: 0702, 0703, 0704, 0706, 0707, 0708, 0709, 0711, 0712, 0716, 0717, 0719
La Grange Park: 0459, 0476	University Park: 0801
La Grange: 0459, 0467	Westchester: 0456, 0457, 0458, 0459, 0476

# Panel Index

0015	0020	0025	0030	0035	0040	0045	0050	0055	0060	0065	0070	0075	0080	0085	0090	0095	0100	0105	0110	0115	0120	0125	0130	0135	0140	0145	0150	0155	0160	0165	0170	0175	0180	0185	0190	0195	0200	0205	0210	0215	0220	0225	0230	0235	0240	0245	0250	0255	0260	0265	0270	0275	0280	0285	0290	0295	0300	0305	0310	0315	0320	0325	0330	0335	0340	0345	0350	0355	0360	0365	0370	0375	0380	0385	0390	0395	0400	0405	0410	0415	0420	0425	0430	0435	0440	0445	0450	0455	0460	0465	0470	0475	0480	0485	0490	0495	0500	0505	0510	0515	0520	0525	0530	0535	0540	0545	0550	0555	0560	0565	0570	0575	0580	0585	0590	0595	0600	0605	0610	0615	0620	0625	0630	0635	0640	0645	0650	0655	0660	0665	0670	0675	0680	0685	0690	0695	0700	0705	0710	0715	0720	0725	0730	0735	0740	0745	0750	0755	0760	0765	0770	0775	0780	0785	0790	0795	0800	0805	0810	0815	0820	0825	0830	0835	0840	0845	0850	0855	0860	0865	0870	0875	0880	0885	0890	0895	0900	0905	0910	0915	0920	0925	0930	0935	0940	0945	0950	0955	0960	0965	0970	0975	0980	0985	0990	0995	1000
------	------	------	------	------	------	------	------	------	------	------	------	------	------	------	------	------	------	------	------	------	------	------	------	------	------	------	------	------	------	------	------	------	------	------	------	------	------	------	------	------	------	------	------	------	------	------	------	------	------	------	------	------	------	------	------	------	------	------	------	------	------	------	------	------	------	------	------	------	------	------	------	------	------	------	------	------	------	------	------	------	------	------	------	------	------	------	------	------	------	------	------	------	------	------	------	------	------	------	------	------	------	------	------	------	------	------	------	------	------	------	------	------	------	------	------	------	------	------	------	------	------	------	------	------	------	------	------	------	------	------	------	------	------	------	------	------	------	------	------	------	------	------	------	------	------	------	------	------	------	------	------	------	------	------	------	------	------	------	------	------	------	------	------	------	------	------	------	------	------	------	------	------	------	------	------	------	------	------	------	------	------	------	------	------	------	------	------	------	------	------	------	------	------	------	------	------	------

Not available. Contact MWRD for further information



## NOTES TO USER:

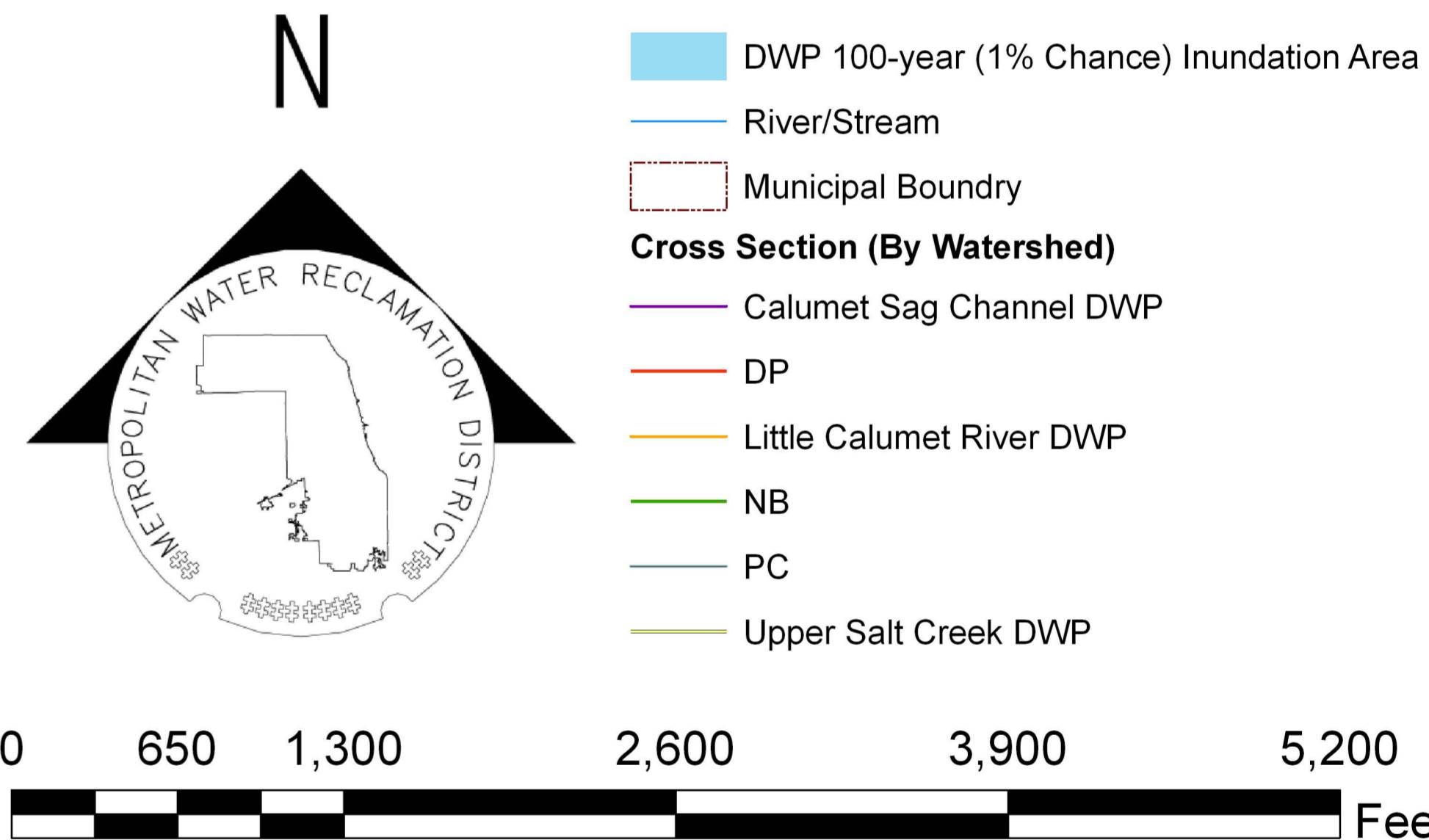
The inundation areas and water surface elevations shown on this map were developed as part of the Metropolitan Water Reclamation District of Greater Chicago's (MWRD) Stormwater Management Program. Specific details regarding the development of the new models used to generate the maps are described in MWRD's Detailed Watershed Plans, which are available for download at [www.mwrdd.org](http://www.mwrdd.org). To access, click on "Services & Facilities" in the top navigation bar, click on "Stormwater Management", and then click on "Stormwater Annual Reports and Publications" on the left navigation bar of the Stormwater Management webpage.

This map does not delineate floodways. The information contained on this map is in addition to and does not substitute for the relevant Federal Emergency Management Agency's (FEMA) Flood Insurance Study (FIS) and associated Flood Insurance Rate Map (FIRM).

Elevations stated on this map are consistent with the North American Vertical Datum (NAVD) 1988. Flood elevations must be compared to ground structures referenced to the same datum. Hydraulic profiles of modeled waterways are available for download at [www.mwrdd.org](http://www.mwrdd.org). To access, click on "Services & Facilities" in the top navigation bar, click on "Stormwater Management", and then click on "Inundation Maps & Profiles" on the left navigation bar of the Stormwater Management webpage.

The corporate limits shown on this map are based on the best information available at the time of study.

If you have questions on this map, please contact the MWRD's Engineering Department-Stormwater Management Section, at 312-751-5600, or via e-mail [Stormwater@mwrdd.org](mailto:Stormwater@mwrdd.org).



# Cook County Inundation Map

## Panel 0826

The area depicted in this map corresponds to FEMA's DFIRM Panel: 17031C0826J