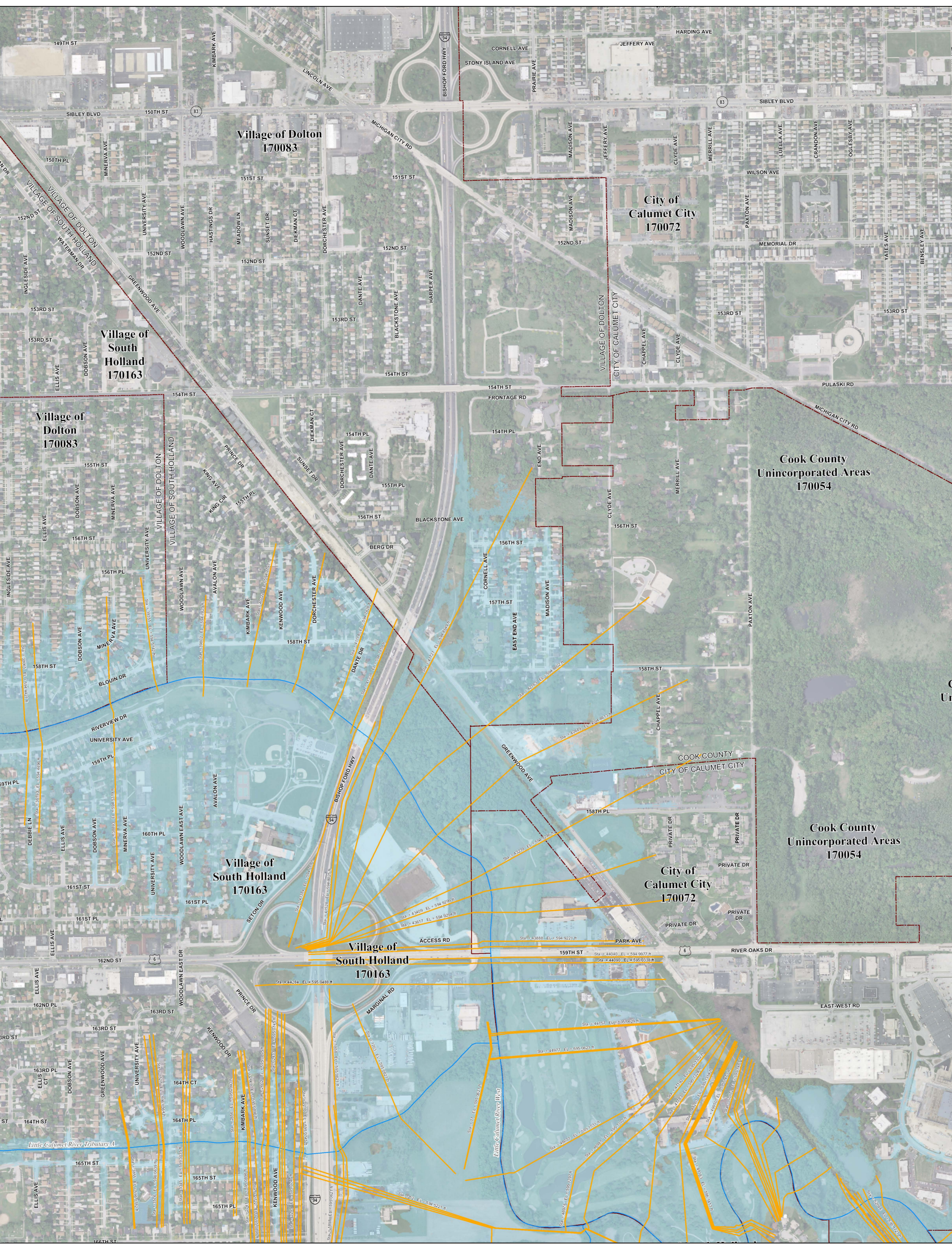


# Municipality Index

- Alsip: 0609, 0617, 0628, 0636, 0637, 0638, 0639
- Arlington Heights: 0044, 0063, 0064, 0162, 0164, 0192, 0201, 0202, 0203, 0204, 0211, 0212
- Barrington Hills: 0015, 0020, 0155, 0156, 0157
- Barrington: 0220, 0238
- Bartlett: 0144, 0163, 0164, 0168, 0285, 0305, 0306
- Bedford Park: 0487, 0488, 0489, 0495, 0515, 0606
- Bellwood: 0369, 0388, 0457, 0476
- Bensenville: 0358
- Berkeley: 0368, 0369, 0456
- Berwyn: 0483, 0484, 0485
- Blue Island: 0637, 0639, 0643, 0644, 0645
- Buffalo Grove: 0653, 0664
- Bridgeview: 0480, 0485, 0602, 0606, 0609
- Brookview: 0476, 0477
- Brookfield: 0478, 0479, 0486, 0487
- Buffalo Grove: 0653, 0664
- Burbank: 0495, 0515, 0606, 0607, 0630
- Burnham: 0664, 0668, 0669
- Burr Ridge: 0466, 0468, 0469, 0681, 0582
- Calumet City: 0664, 0668, 0669, 0752, 0754, 0756, 0757, 0758, 0759
- Calumet Park: 0643, 0644, 0645
- Chicago Heights: 0742, 0743, 0744, 0763, 0806, 0807, 0826
- Chicago Ridge: 0606, 0607, 0608, 0609
- Chicago: 0214, 0218, 0219, 0239, 0243, 0244, 0265, 0270, 0352, 0356, 0357, 0358, 0359, 0376, 0378, 0380, 0382, 0385, 0386, 0387, 0395, 0401, 0402, 0403, 0404, 0410, 0415, 0416, 0417, 0418, 0419, 0438, 0440, 0484, 0485, 0491, 0492, 0495, 0503, 0504, 0505, 0506, 0507, 0508, 0509, 0515, 0520, 0526, 0528, 0530, 0540, 0545, 0528, 0630, 0635, 0636, 0637, 0645, 0655, 0658, 0659, 0660, 0661, 0662, 0663, 0664, 0668, 0669, 0670
- Cicero: 0484, 0485, 0503, 0505
- Country Club Hills: 0728, 0729, 0736, 0737
- Countryside: 0467, 0469, 0486, 0488
- Crestwood: 0617, 0619, 0636, 0638, 0639
- Dear Park: 0328, 0329, 0343
- Deerfield: 0069, 0088, 0089
- Des Plaines: 0208, 0209, 0212, 0214, 0216, 0217, 0218, 0219, 0236, 0238, 0357, 0376
- Dimmo: 0643, 0644, 0731
- Dolton: 0644, 0663, 0664, 0732, 0751, 0752
- East Dundee: 0155
- East Hazel Crest: 0733, 0734
- Elgin: 0135, 0142, 0144, 0155, 0161, 0163, 0305
- Elk Grove Village: 0193, 0194, 0211, 0213, 0214, 0218, 0331, 0332, 0351, 0352
- Elmhurst: 0456
- Elmwood Park: 0380, 0387, 0395
- Evanston: 0253, 0255, 0260, 0265, 0270
- Evergreen Park: 0628, 0630, 0635
- Flossmoor: 0737, 0739, 0741, 0742, 0743, 0744
- Ford Heights: 0763, 0764, 0768, 0826, 0827
- Forest Park: 0389, 0395, 0477, 0485
- Forest View: 0484, 0491, 0492
- Frankfort: 0781, 0782
- Franklin Park: 0358, 0359, 0366, 0367, 0378, 0386
- Glenace: 0093, 0094, 0113, 0231, 0232, 0251
- Glenview: 0207, 0209, 0226, 0227, 0228, 0229, 0231, 0233, 0234, 0236, 0237, 0241
- Glenwood: 0742, 0761, 0762, 0763, 0764
- Golf: 0233, 0234, 0241, 0242
- Hanover Park: 0168, 0169, 0306, 0307
- Harvey: 0643, 0644, 0731, 0732, 0734, 0751
- Harwood Heights: 0380, 0385
- Hazel Crest: 0729, 0733, 0734, 0737
- Hickory Hills: 0601, 0602, 0603, 0604, 0606, 0608
- Hillside: 0368, 0369, 0456, 0457
- Hinsdale: 0458, 0466, 0467, 0468, 0469
- Hodgins: 0469, 0469, 0467, 0468, 0469, 0502, 0601
- Hoffman Estates: 0155, 0157, 0158, 0159, 0161, 0162, 0166, 0167, 0176, 0178, 0186, 0187, 0188, 0189, 0191
- Hometown: 0630
- Homewood: 0729, 0733, 0734, 0737, 0741, 0742
- Indian Head Park: 0468, 0469
- Inverness: 0020, 0038, 0039, 0157, 0176, 0177, 0178, 0179
- Justice: 0488, 0489, 0601, 0602
- Kennilworth: 0253, 0255
- La Grange Park: 0459, 0476
- La Grange: 0459, 0467
- La Grange Park: 0478
- La Grange: 0478, 0486
- Lansing: 0754, 0756, 0758, 0759, 0762, 0766, 0767
- Lemont: 0567, 0569, 0579, 0583, 0586, 0587, 0588, 0589, 0591, 0593
- Lincolnwood: 0244, 0265, 0382, 0401, 0402
- Lymwood: 0762, 0764, 0766, 0767, 0768, 0769, 0831, 0832
- Lyns: 0479, 0483, 0487, 0491
- Markham: 0726, 0727, 0728, 0731, 0732, 0733, 0734
- Mattoon: 0718, 0719, 0738, 0739, 0781, 0782, 0801, 0802
- Maywood: 0388, 0389, 0476, 0477
- Markham: 0726, 0727, 0728, 0731, 0732, 0733, 0734
- Mattoon: 0718, 0719, 0738, 0739, 0781, 0782, 0801, 0802
- Maywood: 0388, 0389, 0476, 0477
- Mc Cook: 0486, 0487, 0491
- Melrose Park: 0367, 0369, 0386, 0387, 0388, 0389
- Merrionette Park: 0630, 0637
- Midlothian: 0619, 0638, 0639, 0707, 0726, 0727
- Morton Grove: 0237, 0241, 0242, 0243, 0244
- Mount Prospect: 0202, 0203, 0204, 0206, 0207, 0208, 0209, 0211, 0212, 0214, 0216
- Niles: 0236, 0237, 0238, 0239, 0241, 0243, 0244
- Northbrook: 0069, 0088, 0089, 0093, 0207, 0225, 0227, 0231, 0232
- Northfield: 0231, 0232, 0233, 0234
- Northlake: 0366, 0367, 0368, 0369
- Oak Forest: 0618, 0619, 0706, 0707, 0709, 0726, 0727, 0728, 0729
- Oak Lawn: 0606, 0607, 0608, 0609, 0617, 0628, 0630
- Oak Park: 0395, 0485
- Olympia Fields: 0738, 0743
- Orland Hills: 0701, 0702, 0703, 0704
- Orland Park: 0593, 0594, 0613, 0614, 0618, 0682, 0684, 0692, 0701, 0702, 0703, 0704, 0706, 0711
- Palatine: 0038, 0039, 0043, 0044, 0177, 0179, 0181, 0182, 0183
- Palos Heights: 0612, 0614, 0616, 0617, 0618, 0619
- Palos Hills: 0603, 0604, 0608, 0611, 0612, 0616
- Palos Park: 0592, 0594, 0611, 0612, 0613, 0614, 0616
- Park Forest: 0739, 0743, 0802, 0806, 0807
- Park Ridge: 0236, 0237, 0238, 0239, 0376, 0380
- Phoenix: 0732, 0751
- Posen: 0639, 0643, 0727, 0731
- Prospect Heights: 0201, 0202, 0606, 0207, 0208
- Richton Park: 0781, 0782, 0801, 0802
- River Forest: 0307, 0309, 0395
- River Grove: 0380, 0386, 0387
- Riversdale: 0643, 0644, 0645, 0661, 0663
- Riverside: 0479, 0483
- Robbins: 0638, 0639
- Rolling Meadows: 0179, 0181, 0182, 0183, 0184, 0191, 0192, 0211
- Roselle: 0193, 0330, 0331
- Rosemont: 0219, 0357, 0376
- Sauk Village: 0754, 0759, 0826, 0827, 0831
- Schaumburg: 0167, 0169, 0179, 0183, 0184, 0186, 0187, 0188, 0189, 0191, 0192, 0193, 0194, 0307, 0330
- Schiller Park: 0357, 0359, 0376, 0378
- Skokie: 0234, 0242, 0244, 0253, 0265
- South Barrington: 0155, 0156, 0157, 0158, 0159, 0176, 0178
- South Chicago Heights: 0807, 0826
- South Holland: 0732, 0734, 0751, 0752, 0753, 0754
- Steger: 0807, 0826, 0827
- Stickney: 0483, 0484, 0491, 0503
- Stone Park: 0367, 0369, 0386, 0388
- Streamwood: 0162, 0163, 0164, 0166, 0167, 0168, 0169, 0306
- Summit: 0487, 0488, 0491, 0495
- Thornton: 0734, 0742, 0753, 0761
- Tinley Park: 0732, 0703, 0704, 0706, 0707, 0708, 0709, 0711, 0712, 0716, 0717, 0719
- University Park: 0801
- Westchester: 0456, 0457, 0458, 0459, 0476
- Western Springs: 0458, 0459, 0460, 0467, 0468, 0469
- Wheeling: 0064, 0068, 0069, 0202, 0206, 0207
- Willow Springs: 0469, 0488, 0581, 0582, 0583, 0584, 0601
- Wilmette: 0234, 0253, 0255, 0260
- Winnetka: 0113, 0232, 0251, 0253, 0255
- Worth: 0608, 0609, 0616, 0617



## NOTES TO USER:

The inundation areas and water surface elevations shown on this map were developed as part of the Metropolitan Water Reclamation District of Greater Chicago's (MWRD) Stormwater Management Program. Specific details regarding the development of the new models used to generate the maps are described in MWRD's Detailed Watershed Plans, which are available for download at [www.mwrdd.org](http://www.mwrdd.org). To access, click on "Services & Facilities" in the top navigation bar, click on "Stormwater Management", and then click on "Stormwater Annual Reports and Publications" on the left navigation bar of the Stormwater Management webpage.

This map does not delineate floodways. The information contained on this map is in addition to and does not substitute for the relevant Federal Emergency Management Agency's (FEMA) Flood Insurance Study (FIS) and associated Flood Insurance Rate Map (FIRM).

Elevations stated on this map are consistent with the North American Vertical Datum (NAVD) 1988. Flood elevations must be compared to ground structures referenced to the same datum. Hydraulic profiles of modeled waterways are available for download at [www.mwrdd.org](http://www.mwrdd.org). To access, click on "Services & Facilities" in the top navigation bar, click on "Stormwater Management", and then click on "Inundation Maps & Profiles" on the left navigation bar of the Stormwater Management webpage.

The corporate limits shown on this map are based on the best information available at the time of study.

If you have questions on this map, please contact the MWRD's Engineering Department-Stormwater Management Section, at 312-751-5600, or via e-mail [Stormwater@mwrdd.org](mailto:Stormwater@mwrdd.org).

## Panel Index

0015	0020				
0035	0040	0045	0050	0055	0060
0065	0070	0075	0080	0085	0090
0100	0105	0110	0115	0120	0125
0135	0140	0145	0150	0155	0160
0170	0175	0180	0185	0190	0195
0205	0210	0215	0220	0225	0230
0240	0245	0250	0255	0260	0265
0275	0280	0285	0290	0295	0300
0315	0320	0325	0330	0335	0340
0355	0360	0365	0370	0375	0380
0395	0400	0405	0410	0415	0420
0430	0435	0440	0445	0450	0455
0465	0470	0475	0480	0485	0490
0505	0510	0515	0520	0525	0530
0540	0545	0550	0555	0560	0565
0575	0580	0585	0590	0595	0600
0615	0620	0625	0630	0635	0640
0650	0655	0660	0665	0670	0675
0685	0690	0695	0700	0705	0710
0720	0725	0730	0735	0740	0745
0755	0760	0765	0770	0775	0780
0790	0795	0800	0805	0810	0815
0825	0830	0835	0840	0845	0850
0860	0865	0870	0875	0880	0885
0895	0900	0905	0910	0915	0920
0930	0935	0940	0945	0950	0955
0965	0970	0975	0980	0985	0990
1000	1005	1010	1015	1020	1025
1035	1040	1045	1050	1055	1060
1070	1075	1080	1085	1090	1095
1105	1110	1115	1120	1125	1130
1140	1145	1150	1155	1160	1165
1175	1180	1185	1190	1195	1200
1210	1215	1220	1225	1230	1235
1245	1250	1255	1260	1265	1270
1280	1285	1290	1295	1300	1305
1315	1320	1325	1330	1335	1340
1350	1355	1360	1365	1370	1375
1385	1390	1395	1400	1405	1410
1420	1425	1430	1435	1440	1445
1455	1460	1465	1470	1475	1480
1490	1495	1500	1505	1510	1515
1525	1530	1535	1540	1545	1550
1560	1565	1570	1575	1580	1585
1595	1600	1605	1610	1615	1620
1630	1635	1640	1645	1650	1655
1665	1670	1675	1680	1685	1690
1695	1700	1705	1710	1715	1720
1730	1735	1740	1745	1750	1755
1765	1770	1775	1780	1785	1790
1795	1800	1805	1810	1815	1820
1830	1835	1840	1845	1850	1855
1865	1870	1875	1880	1885	1890
1895	1900	1905	1910	1915	1920
1930	1935	1940	1945	1950	1955
1965	1970	1975	1980	1985	1990
1995	2000	2005	2010	2015	2020

Not available. Contact MWRD for further information

**Cross Section (By Watershed)**

- Calumet Sag Channel DWP
- DP
- Little Calumet River DWP
- NB
- PC
- Upper Salt Creek DWP



Metropolitan Water Reclamation District of Greater Chicago

# Cook County Inundation Map

Panel 0752

The area depicted in this map corresponds to FEMA's DFIRM Panel: 17031C0752J