


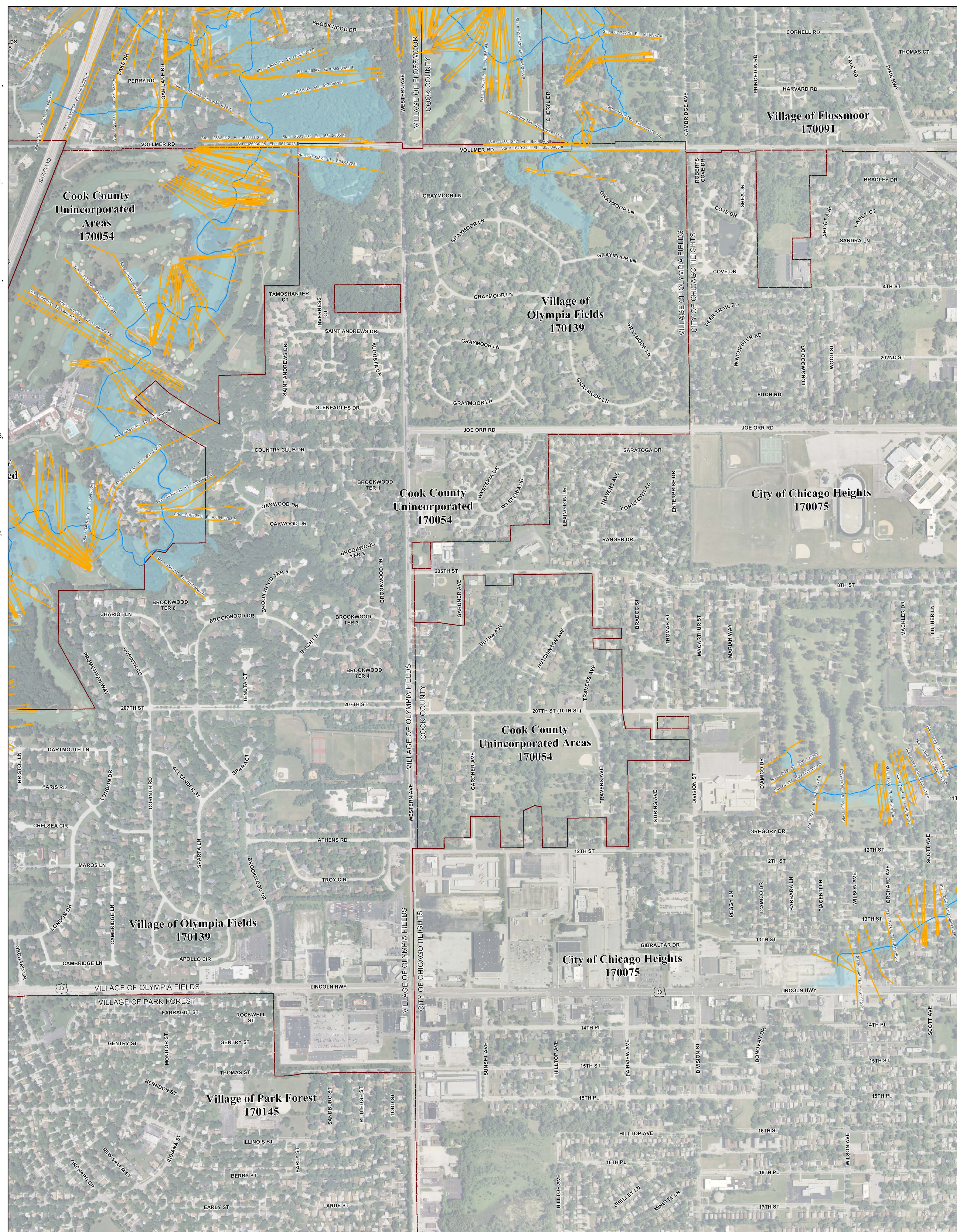
Municipality Index

- Alsip: 0609, 0617, 0628, 0636, 0637, 0638, 0639
- Arlington Heights: 0044, 0063, 0064, 0162, 0184, 0192, 0201, 0202, 0203, 0204, 0211, 0212
- Barrington Hills: 0015, 0020, 0155, 0156, 0157
- Barrington: 0220, 0238
- Bartlett: 0144, 0163, 0164, 0168, 0285, 0305, 0306
- Bedford Park: 0487, 0488, 0489, 0495, 0515, 0606
- Bellwood: 0369, 0388, 0457, 0476
- Bensenville: 0358
- Berkeley: 0368, 0369, 0456
- Berwyn: 0483, 0484, 0485
- Blue Island: 0637, 0639, 0643, 0644, 0645
- Buffalo Grove: 0653, 0664
- Bridgeview: 0480, 0485, 0602, 0606, 0609
- Brookview: 0476, 0477
- Brookfield: 0478, 0479, 0486, 0487
- Buffalo Grove: 0653, 0664
- Burbank: 0495, 0515, 0606, 0607, 0630
- Burnham: 0664, 0668, 0669
- Burr Ridge: 0466, 0468, 0469, 0681, 0582
- Calumet City: 0664, 0668, 0669, 0752, 0754, 0756, 0757, 0758, 0759
- Calumet Park: 0643, 0644, 0645
- Chicago Heights: 0742, 0743, 0744, 0748, 0763, 0806, 0807, 0826
- Chicago Ridge: 0606, 0607, 0608, 0609
- Chicago: 0214, 0218, 0219, 0239, 0243, 0244, 0245, 0270, 0352, 0356, 0357, 0358, 0359, 0376, 0378, 0380, 0382, 0385, 0386, 0387, 0395, 0401, 0402, 0403, 0404, 0410, 0415, 0416, 0417, 0418, 0419, 0438, 0440, 0484, 0485, 0491, 0492, 0495, 0503, 0504, 0505, 0506, 0507, 0508, 0509, 0513, 0526, 0528, 0529, 0540, 0545, 0628, 0630, 0635, 0636, 0637, 0645, 0655, 0658, 0659, 0660, 0661, 0662, 0663, 0664, 0668, 0669, 0670
- Cicero: 0484, 0485, 0503, 0505
- Country Club Hills: 0728, 0729, 0736, 0737
- Countryside: 0467, 0469, 0486, 0488
- Crestwood: 0617, 0619, 0636, 0638, 0639
- Dear Park: 0363, 0369, 0443
- Deerfield: 0069, 0088, 0089
- Des Plaines: 0208, 0209, 0212, 0214, 0216, 0217, 0218, 0219, 0236, 0238, 0357, 0376
- Dimmo: 0643, 0644, 0731
- Dolton: 0644, 0663, 0664, 0732, 0751, 0752
- East Dundee: 0155
- East Hazel Crest: 0733, 0734
- Elgin: 0135, 0142, 0144, 0155, 0161, 0163, 0305
- Elk Grove Village: 0193, 0194, 0211, 0213, 0214, 0218, 0331, 0332, 0351, 0352
- Elmhurst: 0456
- Elmwood Park: 0380, 0387, 0395
- Evanston: 0253, 0255, 0260, 0265, 0270
- Evergreen Park: 0628, 0630, 0635
- Flossmoor: 0737, 0739, 0741, 0742, 0743, 0744
- Ford Heights: 0763, 0764, 0768, 0826, 0827
- Forest Park: 0389, 0395, 0477, 0485
- Forest View: 0484, 0491, 0492
- Frankfort: 0781, 0782
- Franklin Park: 0358, 0359, 0366, 0367, 0378, 0386
- Glencoe: 0093, 0094, 0113, 0231, 0232, 0251
- Glenview: 0207, 0209, 0226, 0227, 0228, 0229, 0231, 0233, 0234, 0236, 0237, 0241
- Glenwood: 0742, 0761, 0762, 0763, 0764
- Golf: 0233, 0234, 0241, 0242
- Hanover Park: 0168, 0169, 0306, 0307
- Harvey: 0643, 0644, 0731, 0732, 0734, 0751
- Harwood Heights: 0380, 0385
- Hazel Crest: 0729, 0733, 0734, 0737
- Hickory Hills: 0601, 0602, 0603, 0604, 0606, 0608
- Hillside: 0368, 0369, 0456, 0457
- Hinsdale: 0458, 0466, 0467, 0468, 0469
- Hodgins: 0469, 0480, 0487, 0488, 0489, 0582, 0601
- Hoffman Estates: 0155, 0157, 0158, 0159, 0161, 0162, 0166, 0167, 0176, 0178, 0179, 0186, 0187, 0188, 0189, 0191
- Hometown: 0630
- Homewood: 0729, 0733, 0734, 0737, 0741, 0742
- Indian Head Park: 0468, 0469
- Inverness: 0020, 0038, 0039, 0157, 0176, 0177, 0178, 0179
- Justice: 0488, 0489, 0601, 0602
- Kenilworth: 0253, 0255
- La Grange Park: 0459, 0476
- La Grange: 0459, 0467
- La Grange Park: 0478
- La Grange: 0478, 0486
- Lansing: 0754, 0756, 0758, 0759, 0762, 0766, 0767
- Lemont: 0567, 0569, 0579, 0583, 0586, 0587, 0588, 0589, 0591, 0593
- Lincolnwood: 0244, 0265, 0382, 0401, 0402
- Lyons: 0479, 0483, 0487, 0491
- Markham: 0726, 0727, 0741, 0731, 0732, 0733, 0734
- Matteson: 0718, 0719, 0738, 0739, 0781, 0782, 0801, 0802
- Maywood: 0388, 0389, 0476, 0477
- Mc Cook: 0486, 0487, 0491
- Melrose Park: 0367, 0369, 0386, 0387, 0388, 0389
- Merrionette Park: 0630, 0637
- Midlothian: 0619, 0638, 0639, 0707, 0726, 0727
- Morton Grove: 0237, 0241, 0242, 0243, 0244
- Mount Prospect: 0202, 0203, 0204, 0206, 0207, 0208, 0209, 0211, 0212, 0214, 0216
- Niles: 0236, 0237, 0238, 0239, 0241, 0243, 0244
- Northridge: 0376, 0378, 0390, 0395
- North Riverside: 0476, 0477, 0479, 0483, 0485
- Northbrook: 0069, 0088, 0089, 0093, 0207, 0225, 0227, 0231, 0232
- Northfield: 0231, 0232, 0233, 0234
- Northlake: 0396, 0397, 0398, 0399
- Oak Forest: 0618, 0619, 0706, 0707, 0709, 0726, 0727, 0728, 0729
- Oak Lawn: 0606, 0607, 0608, 0609, 0617, 0628, 0630
- Oak Park: 0395, 0485
- Olympia Fields: 0739, 0743
- Orland Hills: 0701, 0702, 0703, 0704
- Orland Park: 0593, 0594, 0613, 0614, 0618, 0682, 0684, 0692, 0701, 0702, 0703, 0704, 0706, 0711
- Palatine: 0038, 0039, 0043, 0044, 0177, 0179, 0181, 0182, 0183
- Palos Heights: 0612, 0614, 0616, 0617, 0618, 0619
- Palos Hills: 0603, 0604, 0608, 0611, 0612, 0616
- Palos Park: 0592, 0594, 0611, 0612, 0613, 0614, 0616
- Park Forest: 0739, 0743, 0802, 0806, 0807
- Park Ridge: 0236, 0237, 0238, 0239, 0376, 0380
- Phoenix: 0732, 0751
- Posen: 0639, 0643, 0727, 0731
- Prospect Heights: 0201, 0202, 0206, 0207, 0208
- Richton Park: 0781, 0782, 0801, 0802
- River Forest: 0307, 0309, 0309
- River Grove: 0380, 0380, 0387
- Riversdale: 0643, 0644, 0645, 0661, 0663
- Riverside: 0479, 0483
- Robbins: 0638, 0639
- Rolling Meadows: 0179, 0181, 0182, 0183, 0184, 0191, 0192, 0211
- Roselle: 0193, 0330, 0331
- Rosemont: 0219, 0357, 0376
- Sauk Village: 0754, 0769, 0826, 0827, 0831
- Schaumburg: 0167, 0169, 0179, 0183, 0184, 0186, 0187, 0188, 0189, 0191, 0192, 0193, 0194, 0307, 0330
- Schiller Park: 0357, 0359, 0376, 0378
- Shaker: 0234, 0242, 0244, 0253, 0265
- South Barrington: 0155, 0156, 0157, 0158, 0159, 0176, 0178
- South Chicago Heights: 0807, 0826
- South Holland: 0732, 0734, 0751, 0752, 0753, 0754
- Steger: 0807, 0826, 0827
- Stickney: 0483, 0484, 0491, 0503
- Stone Park: 0367, 0369, 0386, 0388
- Streamwood: 0162, 0163, 0164, 0166, 0167, 0168, 0169, 0306
- Summit: 0487, 0489, 0491, 0495
- Thornton: 0734, 0742, 0753, 0761
- Timley Park: 0702, 0703, 0704, 0706, 0707, 0708, 0709, 0711, 0712, 0716, 0717, 0719
- University Park: 0801
- Westchester: 0456, 0457, 0458, 0459, 0476
- Western Springs: 0458, 0459, 0460, 0467, 0468, 0469
- Wheeling: 0054, 0058, 0058, 0022, 0206, 0207
- Willow Springs: 0469, 0488, 0581, 0582, 0583, 0584, 0601
- Wilmette: 0234, 0253, 0255, 0260
- Winnetka: 0113, 0232, 0251, 0253, 0255
- Worth: 0608, 0609, 0616, 0617

Panel Index

0015	0020
0038	0043
0044	0049
0053	0058
0063	0068
0077	0082
0088	0093
0103	0108
0113	0118
0124	0129
0135	0140
0144	0149
0155	0160
0164	0169
0174	0179
0184	0189
0194	0199
0204	0209
0214	0219
0224	0229
0234	0239
0244	0249
0254	0259
0264	0269
0274	0279
0284	0289
0294	0299
0304	0309
0314	0319
0324	0329
0334	0339
0344	0349
0354	0359
0364	0369
0374	0379
0384	0389
0394	0399
0404	0409
0414	0419
0424	0429
0434	0439
0444	0449
0454	0459
0464	0469
0474	0479
0484	0489
0494	0499
0504	0509
0514	0519
0524	0529
0534	0539
0544	0549
0554	0559
0564	0569
0574	0579
0584	0589
0594	0599
0604	0609
0614	0619
0624	0629
0634	0639
0644	0649
0654	0659
0664	0669
0674	0679
0684	0689
0694	0699
0704	0709
0714	0719
0724	0729
0734	0739
0744	0749
0754	0759
0764	0769
0774	0779
0784	0789
0794	0799
0804	0809
0814	0819
0824	0829
0834	0839
0844	0849
0854	0859
0864	0869
0874	0879
0884	0889
0894	0899
0904	0909
0914	0919
0924	0929
0934	0939
0944	0949
0954	0959
0964	0969
0974	0979
0984	0989
0994	0999
1004	1009

 Not available. Contact MWRD for further information



NOTES TO USER:

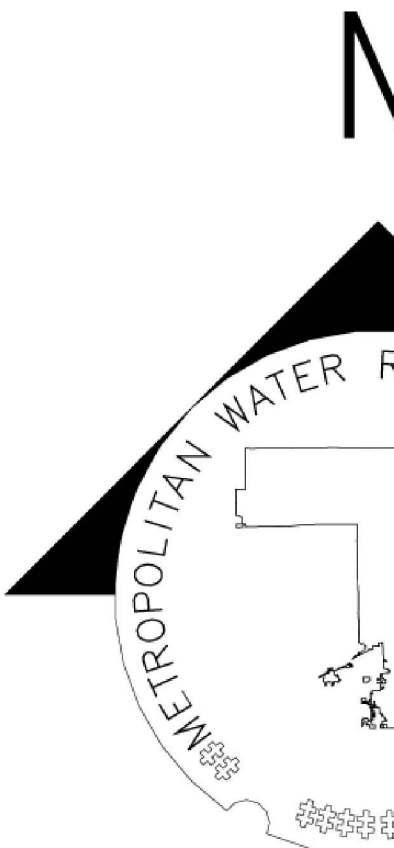
The inundation areas and water surface elevations shown on this map were developed as part of the Metropolitan Water Reclamation District of Greater Chicago's (MWRD) Stormwater Management Program. Specific details regarding the development of the new models used to generate the maps are described in MWRD's Detailed Watershed Plans, which are available for download at www.mwrdd.org. To access, click on "Services & Facilities" in the top navigation bar, click on "Stormwater Management", and then click on "Stormwater Annual Reports and Publications" on the left navigation bar of the Stormwater Management webpage.

This map does not delineate floodways. The information contained on this map is in addition to and does not substitute for the relevant Federal Emergency Management Agency's (FEMA) Flood Insurance Study (FIS) and associated Flood Insurance Rate Map (FIRM).

Elevations stated on this map are consistent with the North American Vertical Datum (NAVD) 1988. Flood elevations must be compared to ground structures referenced to the same datum. Hydraulic profiles of modeled waterways are available for download at www.mwrdd.org. To access, click on "Services & Facilities" in the top navigation bar, click on "Stormwater Management", and then click on "Inundation Maps & Profiles" on the left navigation bar of the Stormwater Management webpage.

The corporate limits shown on this map are based on the best information available at the time of study.

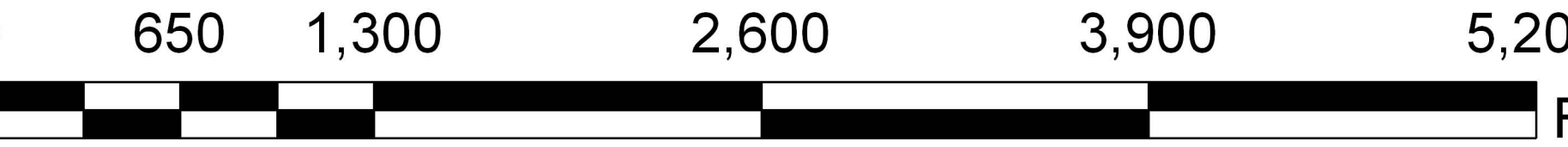
If you have questions on this map, please contact the MWRD's Engineering Department-Stormwater Management Section, at 312-751-5600, or via e-mail Stormwater@mwrdd.org.




- DWP 100-year (1% Chance) Inundation Area
- River/Stream
- Municipal Boundary

Cross Section (By Watershed)

- Calumet Sag Channel DWP
- DP
- Little Calumet River DWP
- NB
- PC
- Upper Salt Creek DWP



Protecting Our Water Environment



Metropolitan Water Reclamation District of Greater Chicago

Cook County Inundation Map

Panel 0743

The area depicted in this map corresponds to FEMA's DFIRM Panel: 17031C0743J