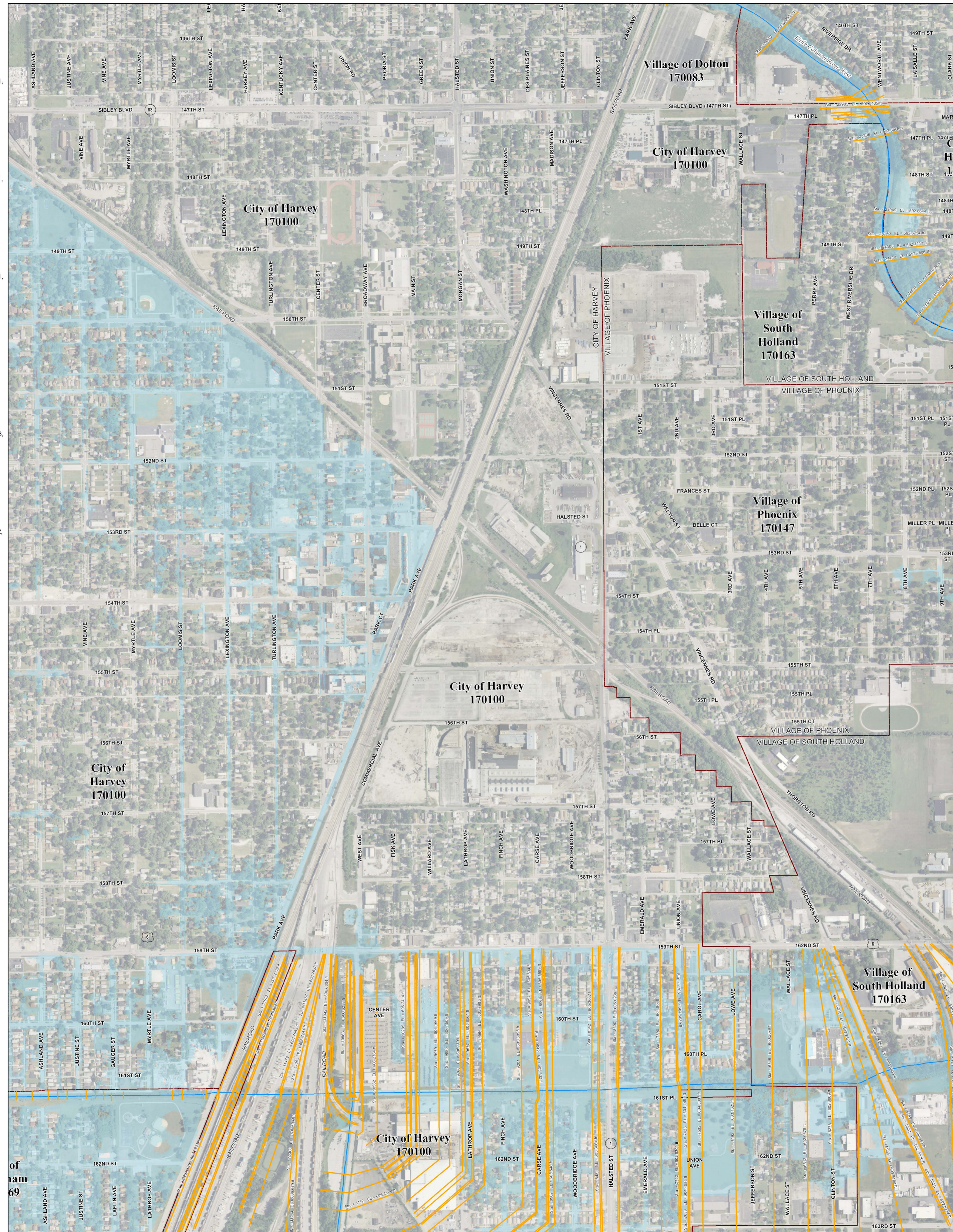
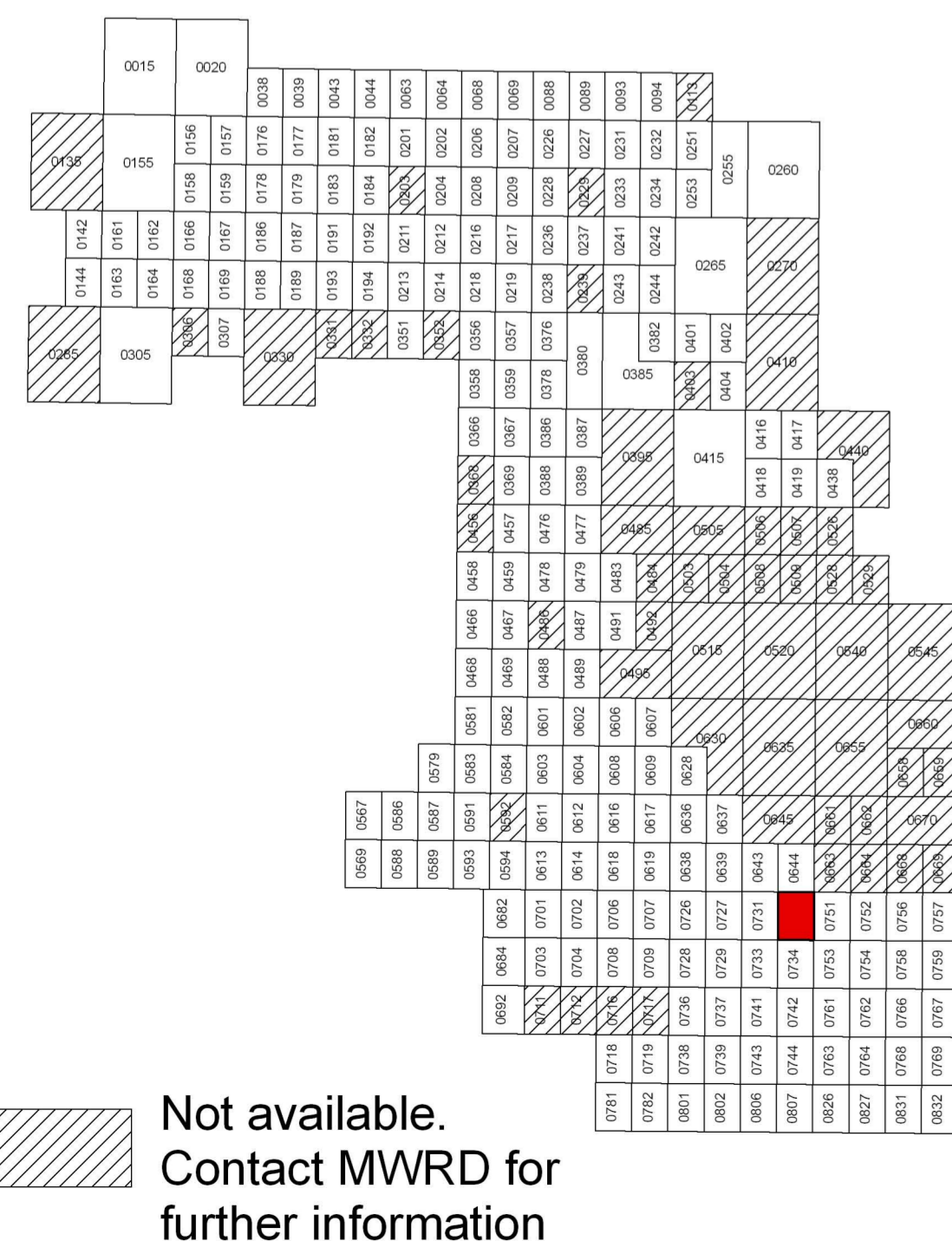


# Municipality Index

Ashig: 0609, 0617, 0628, 0636, 0637, 0638, 0639	La Grange Park: 0478
Arlington Heights: 0044, 0063, 0064, 0162, 0184, 0192, 0201, 0202, 0203, 0204, 0211, 0212	La Grange Park: 0478, 0486
Barrington Hills: 0015, 0020, 0155, 0156, 0157	Lansing: 0754, 0756, 0758, 0759, 0762, 0766, 0767
Barrington: 0220, 0238	Lemont: 0567, 0569, 0579, 0583, 0586, 0587, 0588, 0589, 0591, 0592
Bartlett: 0144, 0163, 0164, 0168, 0285, 0305, 0306	Lincolnwood: 0244, 0265, 0382, 0401, 0402
Bedford Park: 0487, 0488, 0489, 0495, 0515, 0606	Lymwood: 0762, 0764, 0766, 0767, 0768, 0769, 0831, 0832
Bellwood: 0369, 0388, 0457, 0476	Lyons: 0479, 0483, 0487, 0491
Bellevue: 0358, 0365	Markham: 0726, 0727, 0731, 0732, 0733, 0734
Berkeley: 0368, 0369, 0456	Matteson: 0718, 0719, 0738, 0739, 0781, 0782, 0801, 0802
Berwyn: 0483, 0484, 0485	Maywood: 0388, 0389, 0476, 0477
Blue Island: 0637, 0639, 0643, 0644, 0645	Mc Cook: 0486, 0487, 0491
Buffalo Grove: 0605, 0606	Melrose Park: 0367, 0369, 0386, 0387, 0388, 0389
Broadview: 0476, 0477	Merrionette Park: 0630, 0637
Brookfield: 0478, 0479, 0486, 0487	Midlothian: 0619, 0638, 0639, 0707, 0726, 0727
Burbank: 0495, 0515, 0606, 0607, 0630	Morton Grove: 0237, 0241, 0242, 0243, 0244
Burnham: 0664, 0668, 0669	Mount Prospect: 0202, 0203, 0204, 0206, 0207, 0208, 0209, 0211, 0212, 0214, 0216
Burr Ridge: 0466, 0468, 0469, 0681, 0682	Niles: 0236, 0237, 0238, 0239, 0241, 0243, 0244
Calumet City: 0664, 0668, 0669, 0752, 0754, 0756, 0757, 0758, 0759	Northridge: 0376, 0378, 0380, 0385
Chicago Heights: 0742, 0743, 0744, 0763, 0806, 0807, 0826	North Riverside: 0476, 0477, 0479, 0483, 0485
Chicago Ridge: 0606, 0607, 0608, 0609	Northbrook: 0069, 0088, 0089, 0093, 0207, 0226, 0227, 0231, 0232
Chicago: 0214, 0218, 0219, 0239, 0243, 0244, 0265, 0270, 0352, 0356, 0357, 0358, 0359, 0376, 0378, 0380, 0382, 0385, 0386, 0387, 0388, 0389, 0401, 0402, 0403, 0404, 0410, 0415, 0416, 0417, 0418, 0419, 0438, 0440, 0484, 0485, 0491, 0492, 0495, 0503, 0504, 0505, 0506, 0507, 0508, 0509, 0513, 0526, 0528, 0529, 0540, 0545, 0628, 0630, 0635, 0636, 0637, 0645, 0655, 0656, 0659, 0660, 0661, 0662, 0663, 0664, 0668, 0669, 0670	Northfield: 0231, 0232, 0233, 0234
Country Club Hills: 0728, 0729, 0736, 0737	Northlake: 0366, 0367, 0368, 0369
Countyline: 0467, 0469, 0486, 0488	Oak Forest: 0618, 0619, 0706, 0707, 0709, 0726, 0727, 0728, 0729
Crestwood: 0617, 0619, 0636, 0638, 0639	Oak Lawn: 0606, 0607, 0608, 0609, 0617, 0628, 0630
Dier Park: 0338, 0339, 0343	Oak Park: 0395, 0495
Deerfield: 0069, 0088, 0089	Olympic Fields: 0739, 0743
Des Plaines: 0208, 0209, 0212, 0214, 0216, 0217, 0218, 0219, 0236, 0238, 0357, 0376	Orland Hills: 0701, 0702, 0703, 0704
Dimmo: 0643, 0644, 0731	Orland Park: 0593, 0594, 0613, 0614, 0618, 0682, 0684, 0692, 0701, 0702, 0703, 0704, 0706, 0711
East Dundee: 0155	Palatine: 0038, 0039, 0043, 0044, 0177, 0179, 0181, 0182, 0183
East Hazel Crest: 0733, 0734	Palos Hills: 0612, 0614, 0616, 0617, 0618, 0619
Elgin: 0135, 0142, 0144, 0155, 0161, 0163, 0305	Palos Park: 0603, 0604, 0608, 0611, 0612, 0616
Elk Grove Village: 0193, 0194, 0211, 0213, 0214, 0218, 0331, 0332, 0351, 0352	Palos Park Forest: 0739, 0743, 0802, 0806, 0807
Elmhurst: 0456	Park Ridge: 0236, 0237, 0238, 0239, 0376, 0380
Elmwood Park: 0380, 0387, 0395	Riverside: 0479, 0483
Evanston: 0253, 0255, 0260, 0265, 0270	Robbins: 0639, 0639
Evergreen Park: 0628, 0630, 0635	Rolling Meadows: 0179, 0181, 0182, 0183, 0184, 0191, 0192, 0211
Flossmoor: 0737, 0739, 0741, 0742, 0743, 0744	Roselle: 0193, 0330, 0331
Ford Heights: 0763, 0764, 0768, 0826, 0827	Rosemont: 0219, 0357, 0376
Forest Park: 0389, 0395, 0477, 0485	Sauk Village: 0754, 0769, 0826, 0827, 0831
Forest View: 0484, 0491, 0492	Schaumburg: 0167, 0169, 0179, 0183, 0184, 0186, 0187, 0188, 0189, 0191, 0192, 0193, 0194, 0307, 0330
Frankfort: 0761, 0762	Schiller Park: 0357, 0359, 0376, 0378
Franklin Park: 0358, 0359, 0366, 0367, 0378, 0386	Shelton: 0234, 0242, 0244, 0253, 0265
Glencoe: 0093, 0094, 0113, 0231, 0232, 0251	South Barrington: 0155, 0156, 0157, 0158, 0159, 0176, 0178
Glenview: 0207, 0209, 0226, 0227, 0228, 0229, 0231, 0233, 0234, 0236, 0237, 0241	South Chicago Heights: 0807, 0826
Glenwood: 0742, 0761, 0762, 0763, 0764	South Holland: 0732, 0734, 0751, 0752, 0753, 0754
Golf: 0233, 0234, 0241, 0242	Steger: 0807, 0826, 0827
Hanover Park: 0168, 0169, 0306, 0307	Stickney: 0483, 0484, 0491, 0503
Harvey: 0643, 0644, 0731, 0732, 0734, 0751	Stone Park: 0367, 0369, 0386, 0388
Harwood Heights: 0380, 0385	Streamwood: 0162, 0163, 0164, 0166, 0167, 0168, 0169, 0306
Hazel Crest: 0729, 0733, 0734, 0737	Summit: 0487, 0489, 0491, 0495
Hickory Hills: 0601, 0602, 0603, 0604, 0606, 0608	Thornton: 0734, 0742, 0753, 0761
Hillside: 0368, 0369, 0456, 0457	Tinley Park: 0702, 0703, 0704, 0706, 0707, 0708, 0709, 0711, 0712, 0715, 0717, 0718
Hinsdale: 0458, 0466, 0467, 0468, 0469	University Park: 0801
Hodgkins: 0469, 0469, 0467, 0469, 0562, 0601	Westchester: 0456, 0457, 0458, 0459, 0476
Hoffman Estates: 0155, 0157, 0158, 0159, 0161, 0162, 0166, 0167, 0176, 0178, 0179, 0186, 0187, 0188, 0189, 0191	Western Springs: 0458, 0459, 0460, 0467, 0468, 0469
HomeTown: 0630	Wheeling: 0054, 0058, 0059, 0202, 0206, 0207
Homewood: 0729, 0733, 0734, 0737, 0741, 0742	Willow Springs: 0469, 0488, 0581, 0582, 0583, 0584, 0601
Indian Head Park: 0468, 0469	Wilmette: 0234, 0253, 0255, 0260
Inverness: 0020, 0038, 0039, 0157, 0176, 0177, 0178, 0179	Wilmette: 0113, 0232, 0251, 0253, 0255
Irving Park: 0488, 0489, 0601, 0602	Worth: 0608, 0609, 0616, 0617
Kenilworth: 0253, 0255	
La Grange Park: 0459, 0476	
La Grange: 0459, 0467	

# Panel Index



# NOTES TO USER:

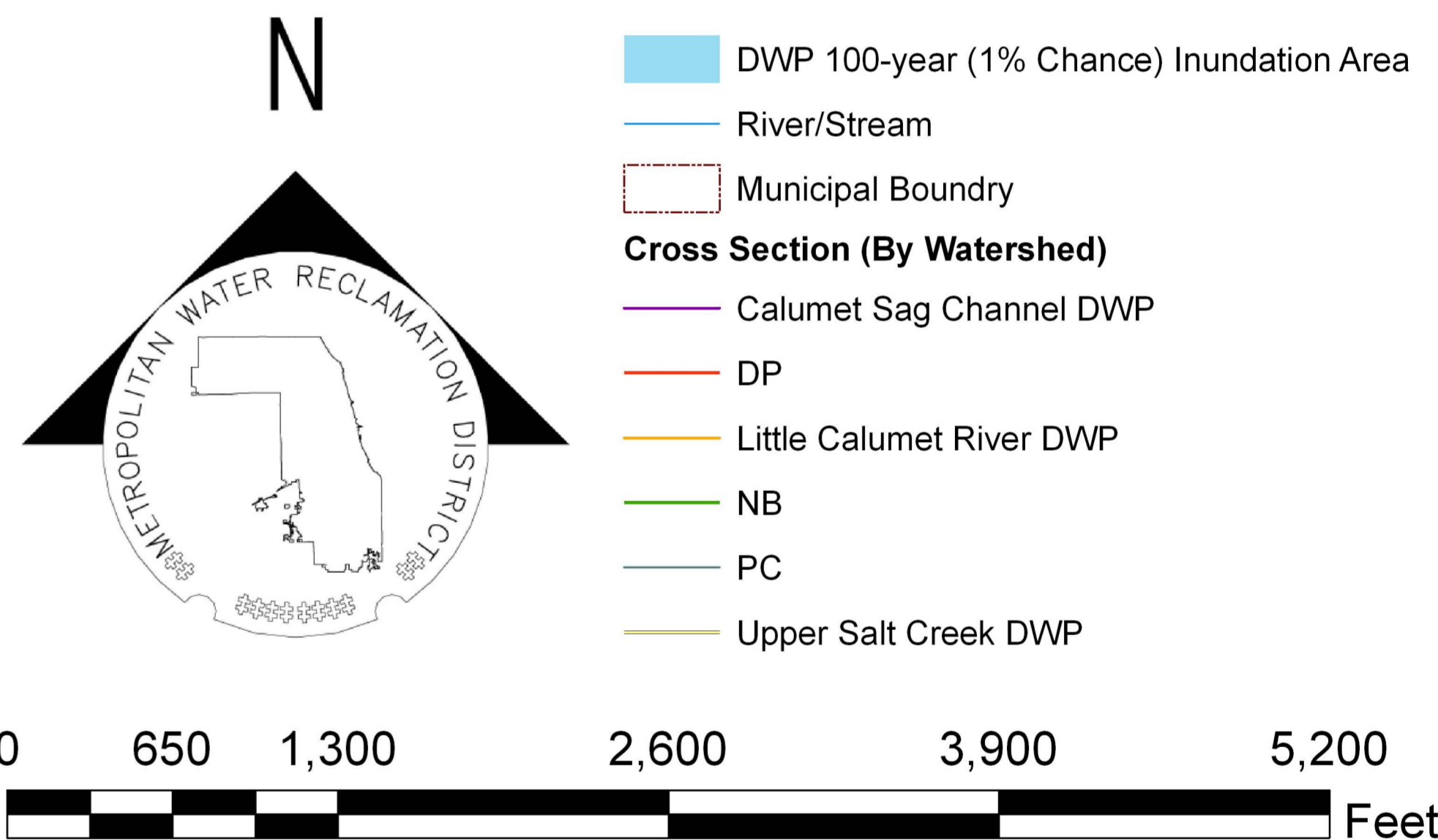
The inundation areas and water surface elevations shown on this map were developed as part of the Metropolitan Water Reclamation District of Greater Chicago's (MWRD) Stormwater Management Program. Specific details regarding the development of the new models used to generate the maps are described in MWRD's Detailed Watershed Plans, which are available for download at [www.mwrdd.org](http://www.mwrdd.org). To access, click on "Services & Facilities" in the top navigation bar, click on "Stormwater Management", and then click on "Stormwater Annual Reports and Publications" on the left navigation bar of the Stormwater Management webpage.

This map does not delineate floodways. The information contained on this map is in addition to and does not substitute for the relevant Federal Emergency Management Agency's (FEMA) Flood Insurance Study (FIS) and associated Flood Insurance Rate Map (FIRM).

Elevations stated on this map are consistent with the North American Vertical Datum (NAVD) 1988. Flood elevations must be compared to ground structures referenced to the same datum. Hydraulic profiles of modeled waterways are available for download at [www.mwrdd.org](http://www.mwrdd.org). To access, click on "Services & Facilities" in the top navigation bar, click on "Stormwater Management", and then click on "Inundation Maps & Profiles" on the left navigation bar of the Stormwater Management webpage.

The corporate limits shown on this map are based on the best information available at the time of study.

If you have questions on this map, please contact the MWRD's Engineering Department-Stormwater Management Section, at 312-751-5600, or via e-mail [Stormwater@mwrdd.org](mailto:Stormwater@mwrdd.org).



Metropolitan Water Reclamation District of Greater Chicago

# Cook County Inundation Map

## Panel 0732

The area depicted in this map corresponds to FEMA's DFIRM Panel: 17031C0732J