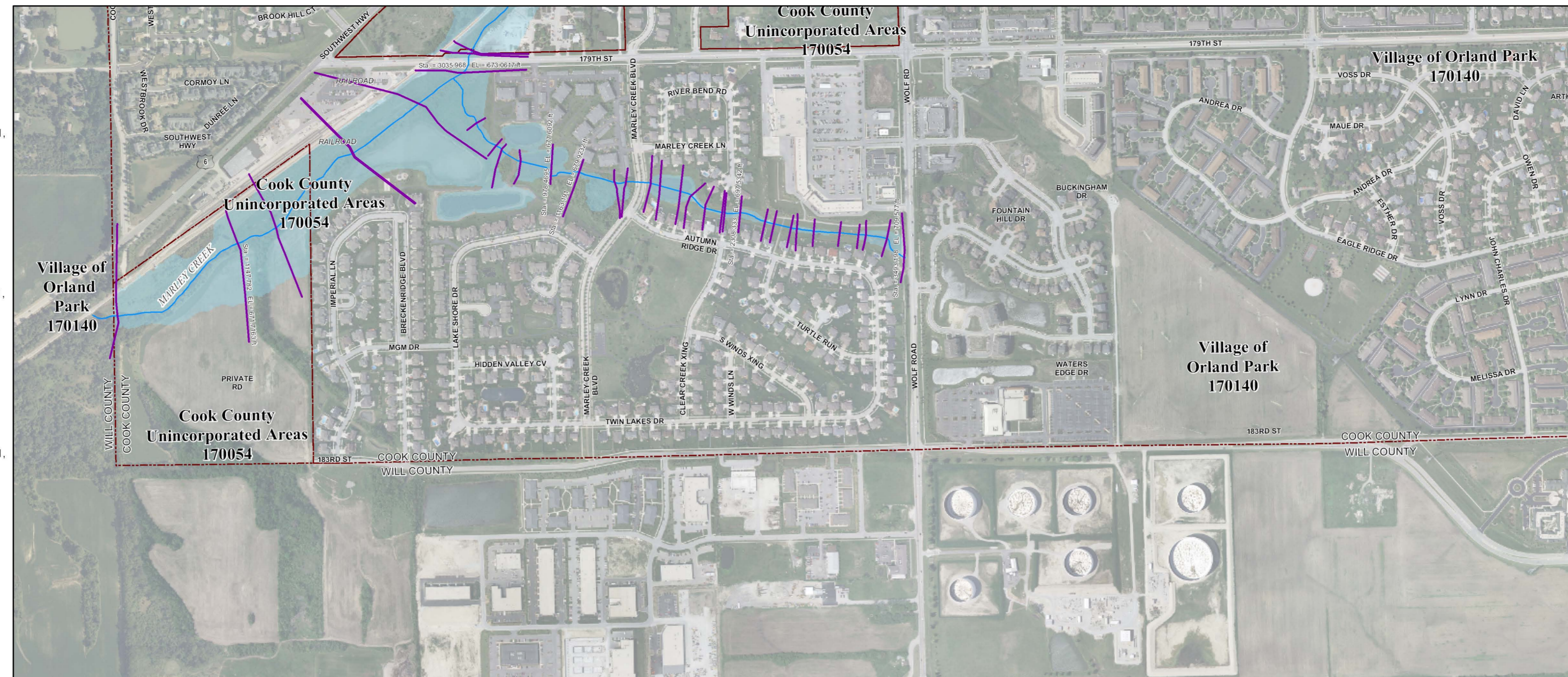


Municipality Index

Alsip: 0609, 0617, 0628, 0636, 0637, 0638, 0639
 Arlington Heights: 0044, 0063, 0064, 0142, 0184, 0192, 0201, 0202, 0203, 0204, 0211, 0212
 Barrington Hills: 0015, 0020, 0155, 0156, 0157
 Barrington: 0020, 0038
 Bartlett: 0144, 0163, 0164, 0168, 0285, 0305, 0306
 Bedford Park: 0487, 0488, 0489, 0495, 0515, 0606
 Bellwood: 0369, 0388, 0457, 0476
 Bensenville: 0338, 0339, 0448
 Berkeley: 0368, 0369, 0456
 Berwyn: 0483, 0484, 0485
 Blue Island: 0637, 0639, 0643, 0644, 0645
 Bridgeview: 0466, 0602, 0606, 0609
 Broadview: 0476, 0477
 Brookfield: 0478, 0479, 0486, 0487
 Brookfield: 0478, 0479, 0486, 0487
 Burr Ridge: 0466, 0468, 0469, 0681, 0682
 Calumet City: 0664, 0668, 0669, 0752, 0754, 0756, 0757, 0758, 0759
 Calumet Park: 0643, 0644, 0645
 Chicago Heights: 0742, 0743, 0744, 0763, 0806, 0807, 0826
 Chicago Ridge: 0606, 0607, 0608, 0609
 Cicero: 0484, 0485, 0503, 0505
 Chicago: 0214, 0218, 0219, 0239, 0243, 0244, 0265, 0270, 0352, 0356, 0357, 0358, 0359, 0376, 0378, 0380, 0382, 0385, 0386, 0387, 0395, 0401, 0402, 0403, 0404, 0410, 0415, 0416, 0417, 0418, 0419, 0438, 0440, 0484, 0485, 0491, 0492, 0495, 0503, 0504, 0505, 0506, 0507, 0508, 0509, 0510, 0520, 0526, 0528, 0529, 0540, 0545, 0628, 0630, 0635, 0636, 0637, 0645, 0655, 0658, 0659, 0660, 0661, 0662, 0663, 0664, 0668, 0669, 0670, 0702, 0703, 0704, 0706, 0711
 Country Club Hills: 0728, 0729, 0736, 0737
 Countryside: 0467, 0469, 0486, 0488
 Crestwood: 0617, 0619, 0636, 0638, 0639
 Deer Park: 0039, 0043
 Deerfield: 0069, 0088, 0089
 Des Plaines: 0208, 0209, 0212, 0214, 0216, 0217, 0218, 0219, 0236, 0238, 0357, 0376
 Dillmoor: 0643, 0644, 0731
 Dolton: 0644, 0663, 0664, 0732, 0751, 0752
 East Dundee: 0155
 East Hazel Crest: 0733, 0734
 Elgin: 0135, 0142, 0144, 0155, 0161, 0163, 0305
 Elk Grove Village: 0193, 0194, 0211, 0213, 0214, 0218, 0331, 0332, 0351, 0352
 Elmhurst: 0456
 Elmwood Park: 0380, 0387, 0395
 Evanston: 0253, 0255, 0260, 0265, 0270
 Evergreen Park: 0628, 0630, 0635
 Flossmoor: 0737, 0739, 0741, 0742, 0743, 0744
 Ford Heights: 0763, 0764, 0768, 0826, 0827
 Forest Park: 0389, 0395, 0477, 0485
 Forest View: 0484, 0491, 0492
 Frankfort: 0761, 0782
 Franklin Park: 0358, 0359, 0366, 0367, 0378, 0386
 Glenco: 0093, 0094, 0113, 0231, 0232, 0251
 Glenview: 0207, 0209, 0226, 0227, 0228, 0229, 0231, 0233, 0234, 0236, 0237, 0241
 Glenwood: 0742, 0761, 0762, 0763, 0764
 Golf: 0233, 0234, 0241, 0242
 Hanover Park: 0168, 0169, 0306, 0307
 Harvey: 0643, 0644, 0731, 0732, 0734, 0751
 Harwood Heights: 0380, 0385
 Hazel Crest: 0729, 0733, 0734, 0737
 Hickory Hills: 0601, 0602, 0603, 0604, 0606, 0608
 Hillside: 0368, 0369, 0456, 0457
 Hinsdale: 0458, 0466, 0467, 0468, 0469
 Hodgkins: 0469, 0469, 0467, 0468, 0469, 0467, 0468, 0469
 Hoffman Estates: 0155, 0157, 0158, 0159, 0161, 0162, 0166, 0167, 0176, 0178, 0179, 0186, 0187, 0188, 0189, 0191
 Homewood: 0630
 Homewood: 0729, 0733, 0734, 0737, 0741, 0742
 Indian Head Park: 0468, 0469
 Inverness: 0020, 0038, 0039, 0157, 0176, 0177, 0178, 0179
 Justice: 0488, 0489, 0601, 0602
 Kenilworth: 0253, 0255
 La Grange Park: 0459, 0476
 La Grange: 0459, 0467
 La Grange Park: 0478
 La Grange: 0478, 0486
 Lansing: 0754, 0756, 0758, 0759, 0762, 0766, 0767
 Lemont: 0567, 0569, 0579, 0583, 0586, 0587, 0588, 0589, 0591, 0593
 Lincolnwood: 0244, 0265, 0382, 0401, 0402
 Lyndwood: 0762, 0764, 0766, 0767, 0768, 0769, 0831, 0832
 Lyons: 0479, 0483, 0487, 0491
 Markham: 0726, 0727, 0728, 0731, 0732, 0733, 0734
 Matteson: 0718, 0719, 0738, 0739, 0781, 0782, 0801, 0802
 Maywood: 0388, 0389, 0476, 0477
 Midlothian: 0619, 0638, 0639, 0707, 0726, 0727
 Morton Grove: 0237, 0241, 0242, 0243, 0244
 Mount Prospect: 0202, 0203, 0204, 0206, 0207, 0208, 0209, 0211, 0212, 0214, 0216
 Niles: 0236, 0237, 0238, 0239, 0241, 0243, 0244
 Norridge: 0376, 0379, 0380, 0385
 North Riverside: 0476, 0477, 0479, 0483, 0485
 Northbrook: 0068, 0088, 0089, 0093, 0207, 0226, 0227, 0231, 0232
 Northfield: 0231, 0232, 0233, 0234
 Northlake: 0366, 0367, 0368, 0369
 Oak Forest: 0618, 0619, 0706, 0707, 0709, 0726, 0727, 0728, 0729
 Oak Lawn: 0606, 0607, 0608, 0609, 0617, 0628, 0630
 Oak Park: 0395, 0485
 Olympia Fields: 0738, 0743
 Orland Hills: 0701, 0702, 0703, 0704
 Orland Park: 0593, 0594, 0613, 0614, 0618, 0682, 0684, 0692, 0701, 0702, 0703, 0704, 0706, 0711
 Palatine: 0038, 0039, 0043, 0044, 0177, 0179, 0181, 0182, 0183
 Palos Heights: 0612, 0614, 0616, 0617, 0618, 0619
 Palos Hills: 0603, 0604, 0608, 0611, 0612, 0613, 0614, 0616
 Palos Park: 0592, 0594, 0611, 0612, 0613, 0614, 0616
 Park Forest: 0739, 0743, 0802, 0806, 0807
 Park Ridge: 0236, 0237, 0238, 0239, 0376, 0380
 Phoenix: 0732, 0751
 Posen: 0639, 0643, 0727, 0731
 Prospect Heights: 0201, 0202, 0206, 0207, 0208
 Richton Park: 0781, 0782, 0801, 0802
 River Forest: 0387, 0389, 0395
 River Grove: 0380, 0386, 0387
 Riverdale: 0643, 0644, 0645, 0661, 0663
 Riverside: 0479, 0483
 Robbins: 0638, 0639
 Rolling Meadows: 0179, 0181, 0182, 0183, 0184, 0191, 0192, 0211
 Roselle: 0193, 0330, 0331
 Rosemont: 0219, 0357, 0376
 Sauk Village: 0754, 0769, 0826, 0827, 0831
 Schaumburg: 0167, 0169, 0179, 0183, 0184, 0186, 0187, 0188, 0189, 0191, 0192, 0193, 0194, 0307, 0330
 Schiller Park: 0357, 0359, 0376, 0378
 Skokie: 0234, 0242, 0244, 0253, 0265
 South Barrington: 0155, 0156, 0157, 0158, 0159, 0176, 0178
 South Chicago Heights: 0807, 0826
 South Holland: 0732, 0734, 0751, 0752, 0753, 0754
 Steger: 0807, 0826, 0827
 Stickney: 0483, 0484, 0491, 0503
 Stone Park: 0367, 0369, 0386, 0388
 Streamwood: 0162, 0163, 0164, 0166, 0167, 0168, 0169, 0306
 Summit: 0487, 0489, 0491, 0495
 Thornton: 0734, 0742, 0753, 0761
 Tinley Park: 0702, 0703, 0704, 0706, 0707, 0708, 0709, 0711, 0712, 0716, 0717, 0719
 University Park: 0801
 Westchester: 0456, 0457, 0458, 0459, 0476
 Western Springs: 0458, 0459, 0460, 0467, 0468, 0469
 Wheeling: 0054, 0058, 0059, 0202, 0206, 0207
 Willow Springs: 0469, 0488, 0581, 0582, 0583, 0584, 0601
 Wilmette: 0234, 0253, 0255, 0260
 Wilmette: 0113, 0232, 0251, 0253, 0255
 Worth: 0608, 0609, 0616, 0617



NOTES TO USER:

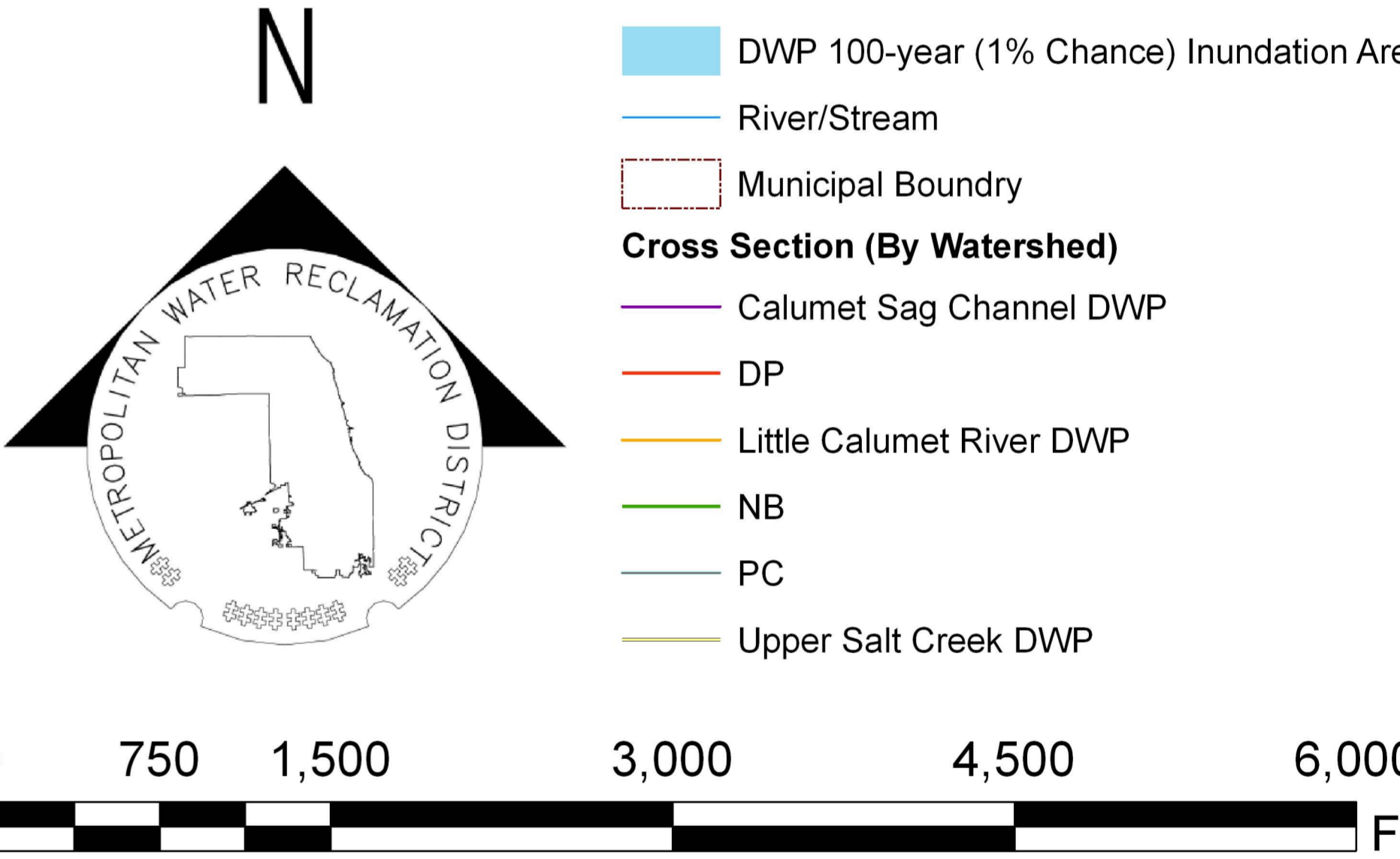
The inundation areas and water surface elevations shown on this map were developed as part of the Metropolitan Water Reclamation District of Greater Chicago's (MWRD) Stormwater Management Program. Specific details regarding the development of the new models used to generate the maps are described in MWRD's Detailed Watershed Plans, which are available for download at www.mwrdd.org. To access, click on "Services & Facilities" in the top navigation bar, click on "Stormwater Management", and then click on "Stormwater Annual Reports and Publications" on the left navigation bar of the Stormwater Management webpage.

This map does not delineate floodways. The information contained on this map is in addition to and does not substitute for the relevant Federal Emergency Management Agency's (FEMA) Flood Insurance Study (FIS) and associated Flood Insurance Rate Map (FIRM).

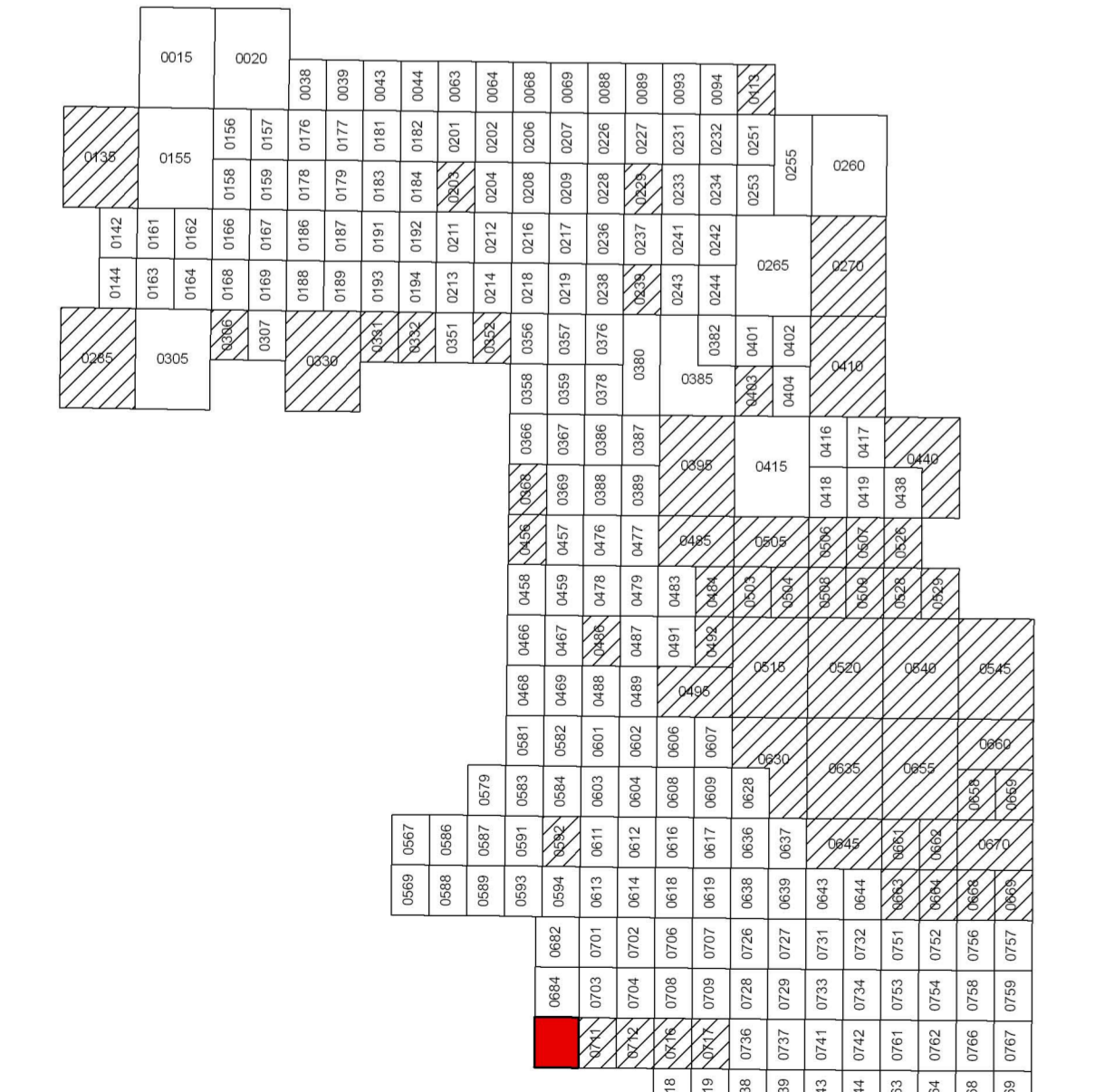
Elevations stated on this map are consistent with the North American Vertical Datum (NAVD) 1988. Flood elevations must be compared to ground structures referenced to the same datum. Hydraulic profiles of modeled waterways are available for download at www.mwrdd.org. To access, click on "Services & Facilities" in the top navigation bar, click on "Stormwater Management", and then click on "Inundation Maps & Profiles" on the left navigation bar of the Stormwater Management webpage.


The corporate limits shown on this map are based on the best information available at the time of study.

If you have questions on this map, please contact the MWRD's Engineering Department-Stormwater Management Section, at 312-751-5600, or via e-mail Stormwater@mwrdd.org.



Panel Index



 Not available. Contact MWRD for further information



Cook County Inundation Map

Panel 0692

The area depicted in this map corresponds to FEMA's DFIRM Panel: 17031C0692J