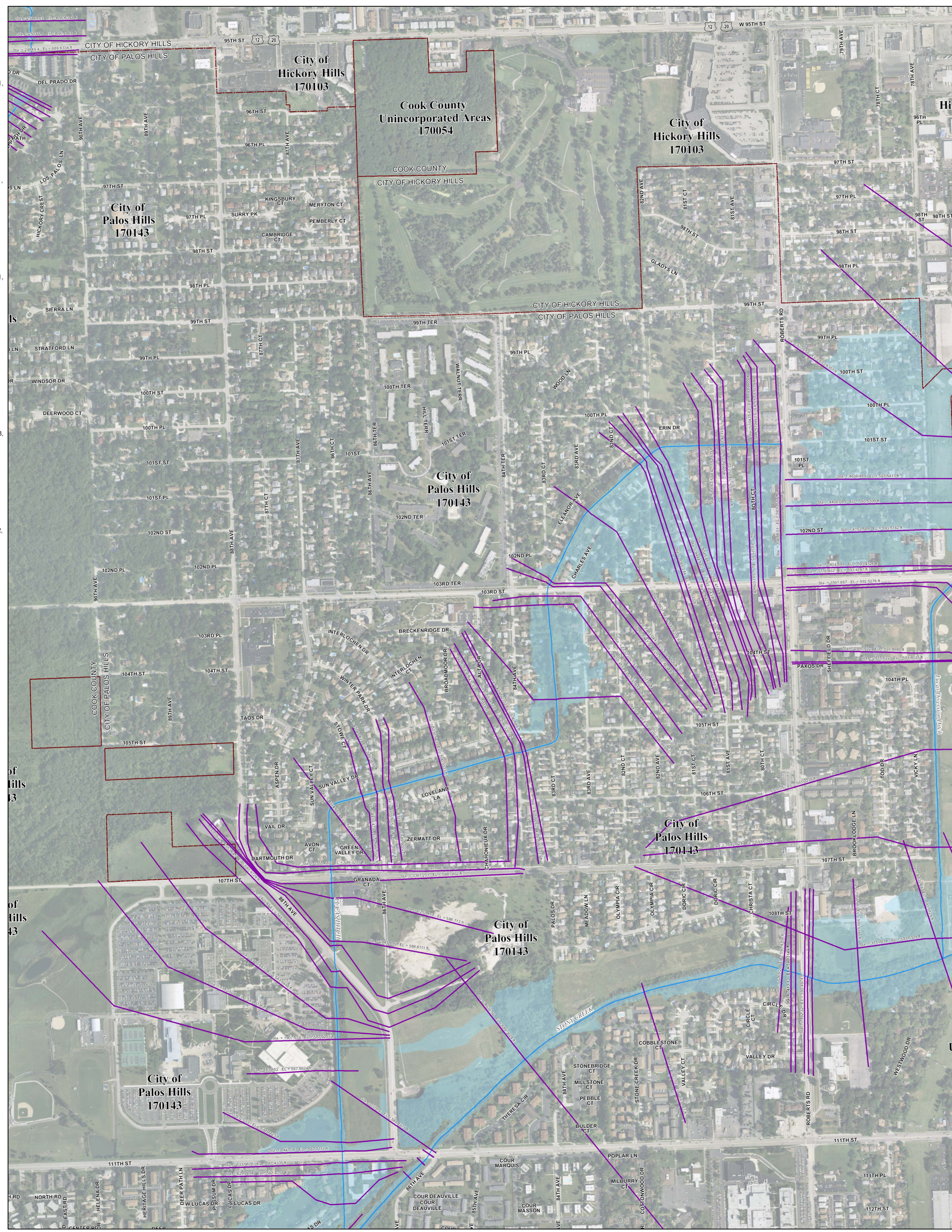


Municipality Index

Arling: 0609, 0617, 0628, 0636, 0637, 0638, 0639
Arlington Heights: 0044, 0063, 0064, 0162, 0184, 0192, 0201, 0202, 0203, 0204, 0211, 0212
Barrington Hills: 0015, 0020, 0155, 0156, 0157
Barrington: 0020, 0038
Bartlett: 0144, 0163, 0164, 0168, 0285, 0305, 0306
Bedford Park: 0487, 0488, 0489, 0495, 0515, 0606
Bellwood: 0369, 0388, 0457, 0476
 Bensenville: 0358
Berkeley: 0368, 0369, 0456
Berwyn: 0483, 0484, 0485
Blue Island: 0637, 0639, 0643, 0644, 0645
Bridgeview: 0489, 0495, 0602, 0606, 0609
Broadview: 0476, 0477
Brookfield: 0478, 0479, 0486, 0487
Buffalo Grove: 0063, 0064
Burbank: 0495, 0515, 0606, 0607, 0630
Burnham: 0664, 0668, 0669
Burr Ridge: 0466, 0468, 0469, 0661, 0582
Calumet City: 0664, 0668, 0669, 0752, 0754, 0756, 0757, 0758, 0759
Calumet Park: 0643, 0644, 0645
Chicago Heights: 0742, 0743, 0744, 0763, 0806, 0807, 0826
Chicago Ridge: 0606, 0607, 0608, 0609
Chicago: 0214, 0218, 0219, 0239, 0243, 0244, 0265, 0270, 0352, 0356, 0357, 0358, 0359, 0376, 0378, 0380, 0382, 0385, 0386, 0387, 0395, 0401, 0402, 0403, 0404, 0410, 0415, 0416, 0417, 0418, 0419, 0438, 0440, 0484, 0485, 0491, 0492, 0495, 0503, 0504, 0505, 0506, 0507, 0508, 0509, 0515, 0520, 0526, 0528, 0529, 0540, 0545, 0526, 0630, 0635, 0636, 0637, 0645, 0655, 0658, 0659, 0660, 0661, 0662, 0663, 0664, 0668, 0669, 0670
Cicero: 0484, 0485, 0503, 0505
Country Club Hills: 0728, 0729, 0736, 0737
Country: 0467, 0469, 0486, 0488
Crestwood: 0617, 0619, 0636, 0638, 0639
Deerfield: 0069, 0088, 0089
Des Plaines: 0208, 0209, 0212, 0214, 0216, 0217, 0218, 0219, 0236, 0238, 0357, 0376
Dillon: 0643, 0644, 0731
Dolton: 0644, 0663, 0664, 0732, 0751, 0752
East Dundee: 0155
East Hazel Crest: 0733, 0734
Elgin: 0135, 0142, 0144, 0155, 0161, 0163, 0305
Elk Grove Village: 0193, 0194, 0211, 0213, 0214, 0218, 0331, 0332, 0351, 0352
Eldorado: 0456
Elmhurst: 0380, 0387, 0395
Evanston: 0253, 0255, 0260, 0265, 0270
Evergreen Park: 0628, 0630, 0635
Flossmoor: 0737, 0739, 0741, 0742, 0743, 0744
Ford Heights: 0763, 0764, 0768, 0826, 0827
Forest Park: 0389, 0395, 0477, 0485
Forest View: 0484, 0491, 0492
Frankfort: 0781, 0782
Franklin Park: 0358, 0359, 0366, 0367, 0378, 0386
Glencoe: 0093, 0094, 0113, 0231, 0232, 0251
Glenview: 0207, 0209, 0226, 0227, 0228, 0229, 0231, 0233, 0234, 0236, 0237, 0241
Glenwood: 0742, 0761, 0762, 0763, 0764
Golf: 0233, 0234, 0241, 0242
Hanover Park: 0168, 0169, 0306, 0307
Harvey: 0643, 0644, 0731, 0732, 0734, 0751
Hazel Crest: 0380, 0385
Hazel Crest: 0729, 0733, 0734, 0737
Hickory Hills: 0801, 0802, 0803, 0804, 0806, 0808
Hillside: 0368, 0369, 0456, 0457
Hinsdale: 0458, 0466, 0467, 0468, 0469
Hodgins: 0469, 0489, 0487, 0488, 0489, 0582, 0601
Hoffman Estates: 0155, 0157, 0158, 0159, 0161, 0162, 0166, 0167, 0176, 0178, 0179, 0186, 0187, 0188, 0189, 0191
Hometown: 0630
Homewood: 0728, 0733, 0734, 0737, 0741, 0742
Indian Head Park: 0468, 0469
Inverness: 0020, 0038, 0039, 0157, 0176, 0177, 0178, 0179
Justice: 0488, 0489, 0601, 0602
Kenilworth: 0253, 0255
La Grange Park: 0459, 0476
La Grange: 0459, 0467
La Grange Park: 0478
La Grange: 0478, 0486
Lansing: 0754, 0756, 0758, 0759, 0762, 0766, 0767
Lansing: 0567, 0569, 0579, 0583, 0586, 0587, 0588, 0589, 0591, 0593
Lincolnwood: 0244, 0265, 0382, 0401, 0402
Lynwood: 0762, 0764, 0766, 0767, 0768, 0769, 0831, 0832
Lyons: 0479, 0483, 0487, 0491
Markham: 0726, 0727, 0729, 0731, 0732, 0733, 0734
Matteson: 0718, 0719, 0738, 0739, 0781, 0782, 0801, 0802
Maywood: 0388, 0389, 0476, 0477
Mc Cook: 0486, 0487, 0491
Melrose Park: 0367, 0369, 0386, 0387, 0388, 0389
Merriemont Park: 0630, 0637
Midlothian: 0619, 0638, 0639, 0707, 0726, 0727
Morton Grove: 0237, 0241, 0242, 0243, 0244
Mount Prospect: 0202, 0203, 0204, 0206, 0207, 0208, 0209, 0211, 0212, 0214, 0216
Niles: 0238, 0237, 0238, 0239, 0241, 0243, 0244
Northridge: 0376, 0378, 0380, 0385
North Riverside: 0476, 0477, 0479, 0483, 0485
Northbrook: 0069, 0088, 0089, 0093, 0207, 0226, 0227, 0231, 0232, 0233
Northfield: 0231, 0232, 0233, 0234
Northlake: 0366, 0367, 0368, 0369
Oak Forest: 0618, 0619, 0706, 0707, 0709, 0726, 0727, 0728, 0729
Oak Lawn: 0606, 0607, 0608, 0609, 0617, 0628, 0630
Oak Park: 0395, 0485
Olympia Fields: 0739, 0743
Orland Hills: 0701, 0702, 0703, 0704
Orland Park: 0593, 0594, 0613, 0614, 0618, 0682, 0684, 0692, 0701, 0702, 0703, 0704, 0706, 0711
Palatine: 0038, 0039, 0043, 0044, 0177, 0179, 0181, 0182, 0183
Palos Heights: 0612, 0614, 0616, 0617, 0618, 0619
Palos Hills: 0603, 0604, 0608, 0611, 0612, 0616
Palos Park: 0592, 0594, 0611, 0612, 0613, 0614, 0616
Park Forest: 0739, 0743, 0802, 0806, 0807
Park Ridge: 0236, 0237, 0238, 0239, 0376, 0380
Phoenix: 0732, 0751
Posen: 0639, 0643, 0727, 0731
Prospect Heights: 0201, 0202, 0206, 0207, 0208
Richton Park: 0781, 0782, 0801, 0802
River Forest: 0387, 0389, 0395
River Grove: 0380, 0388, 0387
Riversdale: 0643, 0644, 0645, 0661, 0663
Riverside: 0479, 0483
Robbins: 0639, 0639
Rolling Meadows: 0179, 0181, 0182, 0183, 0184, 0191, 0192, 0211
Roselle: 0193, 0330, 0331
Rosemont: 0219, 0357, 0376
Sauk Village: 0754, 0759, 0826, 0827, 0831
Schaumburg: 0167, 0169, 0179, 0183, 0184, 0186, 0187, 0188, 0189, 0191, 0192, 0193, 0194, 0307, 0330
Schiller Park: 0357, 0359, 0376, 0378
Shelton: 0234, 0242, 0244, 0253, 0265
South Barrington: 0155, 0156, 0157, 0158, 0159, 0176, 0178
South Chicago Heights: 0807, 0826
South Holland: 0732, 0734, 0751, 0752, 0753, 0754
Steger: 0807, 0826, 0827
Stickney: 0483, 0484, 0491, 0503
Stone Park: 0367, 0369, 0386, 0388
Streamwood: 0162, 0163, 0164, 0166, 0167, 0168, 0169, 0306
Summit: 0487, 0488, 0491, 0495
Thornton: 0734, 0742, 0753, 0761
Tinley Park: 0702, 0703, 0704, 0706, 0707, 0708, 0709, 0711, 0712, 0716, 0717, 0719
University Park: 0801
Westchester: 0456, 0457, 0458, 0459, 0476
Western Springs: 0458, 0459, 0460, 0467, 0468, 0469
Wheeling: 0064, 0068, 0069, 0202, 0206, 0207
Willow Springs: 0469, 0488, 0581, 0582, 0583, 0584, 0601
Wilmette: 0234, 0253, 0255, 0260
Winnetka: 0113, 0232, 0251, 0253, 0255
Worth: 0608, 0609, 0616, 0617

Panel Index

Not available. Contact MWRD for further information



NOTES TO USER:

The inundation areas and water surface elevations shown on this map were developed as part of the Metropolitan Water Reclamation District of Greater Chicago's (MWRD) Stormwater Management Program. Specific details regarding the development of the new models used to generate the maps are described in MWRD's Detailed Watershed Plans, which are available for download at www.mwr.org. To access, click on "Services & Facilities" in the top navigation bar, click on "Stormwater Management", and then click on "Stormwater Annual Reports and Publications" on the left navigation bar of the Stormwater Management webpage.

This map does not delineate floodways. The information contained on this map is in addition to and does not substitute for the relevant Federal Emergency Management Agency's (FEMA) Flood Insurance Study (FIS) and associated Flood Insurance Rate Map (FIRM).

Elevations stated on this map are consistent with the North American Vertical Datum (NAVD) 1988. Flood elevations must be compared to ground structures referenced to the same datum. Hydraulic profiles of modeled waterways are available for download at www.mwr.org. To access, click on "Services & Facilities" in the top navigation bar, click on "Stormwater Management", and then click on "Inundation Maps & Profiles" on the left navigation bar of the Stormwater Management webpage.

The corporate limits shown on this map are based on the best information available at the time of study.

If you have questions on this map, please contact the MWRD's Engineering Department-Stormwater Management Section, at 312-751-5600, or via e-mail Stormwater@mwr.org.

- DWP 100-year (1% Chance) Inundation Area
- River/Stream
- Municipal Boundary

Cross Section (By Watershed)

- Calumet Sag Channel DWP
- DP
- Little Calumet River DWP
- NB
- PC
- Upper Salt Creek DWP

Protecting Our Water Environment

Metropolitan Water Reclamation District of Greater Chicago

Cook County Inundation Map

Panel 0604

The area depicted in this map corresponds to FEMA's DFIRM Panel: 17031C0604J