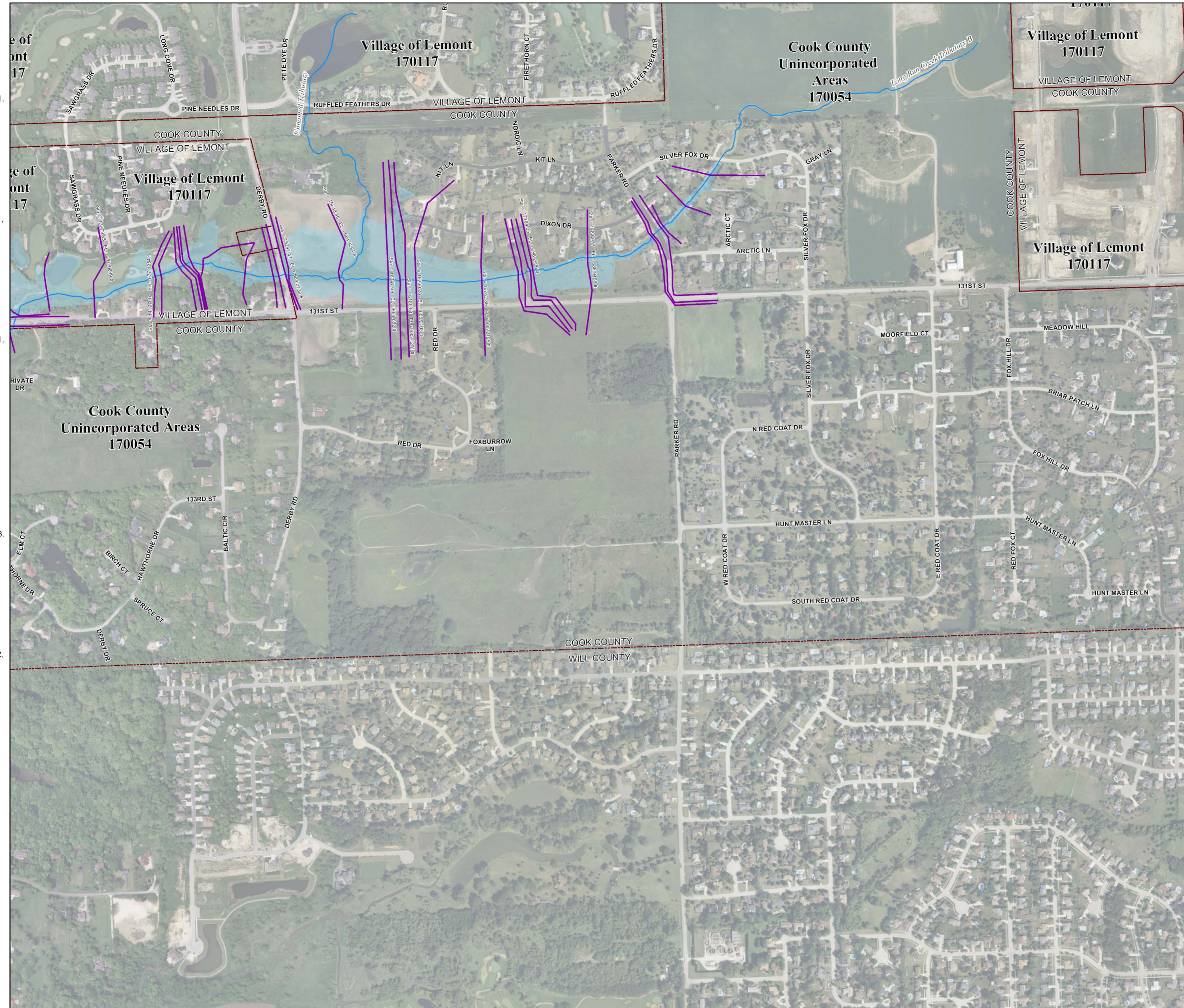


Municipality Index

Alsip: 0609, 0617, 0628, 0636, 0637, 0638, 0639	La Grange Park: 0478
Arlington Heights: 0044, 0063, 0064, 0162, 0184, 0192, 0201, 0202, 0203, 0204, 0211, 0212	La Grange: 0478, 0486
Barrington Hills: 0015, 0020, 0155, 0156, 0157	Lansing: 0754, 0756, 0758, 0759, 0762, 0766, 0767
Barrington: 0020, 0038	Lemont: 0567, 0569, 0579, 0583, 0586, 0587, 0588, 0589, 0591, 0593
Bartlett: 0144, 0163, 0164, 0168, 0285, 0305, 0306	Lincolnwood: 0244, 0265, 0382, 0401, 0402
Bedford Park: 0487, 0488, 0489, 0495, 0515, 0606	Lyons: 0479, 0483, 0487, 0491
Bellwood: 0369, 0388, 0457, 0476	Markham: 0726, 0727, 0729, 0731, 0732, 0733, 0734
Bensenville: 0338, 0359	Matteson: 0718, 0719, 0738, 0739, 0781, 0782, 0801, 0802
Berkeley: 0368, 0369, 0456	Maywood: 0388, 0389, 0476, 0477
Berwyn: 0483, 0484, 0485	Mc Cook: 0486, 0487, 0491
Blue Island: 0637, 0639, 0643, 0644, 0645	Melrose Park: 0367, 0369, 0386, 0387, 0388, 0389
Brookfield: 0478, 0479, 0486, 0487	Merrionette Park: 0630, 0637
Brookdale: 0485, 0486, 0487	Morton Grove: 0237, 0241, 0242, 0243, 0244
Brookfield: 0478, 0479, 0486, 0487	Mount Prospect: 0202, 0203, 0204, 0206, 0207, 0208, 0209, 0211, 0212, 0214, 0216
Brookfield: 0478, 0479, 0486, 0487	Niles: 0236, 0237, 0238, 0239, 0241, 0243, 0244
Burbank: 0495, 0515, 0606, 0607, 0630	North Riverside: 0476, 0477, 0479, 0483, 0485
Burnham: 0664, 0668, 0669	Northbrook: 0069, 0088, 0089, 0093, 0207, 0226, 0227, 0231, 0232
Burr Ridge: 0466, 0468, 0469, 0581, 0582	Oak Forest: 0618, 0619, 0706, 0707, 0709, 0726, 0727, 0728, 0729
Calumet City: 0664, 0668, 0669, 0752, 0754, 0756, 0757, 0758, 0759	Oak Lawn: 0606, 0607, 0608, 0609, 0617, 0628, 0630
Calumet Park: 0643, 0644, 0645	Oak Park: 0395, 0485
Chicago Heights: 0742, 0743, 0744, 0763, 0806, 0807, 0826	Orland Hills: 0701, 0702, 0703, 0704
Chicago Ridge: 0606, 0607, 0608, 0609	Orland Park: 0593, 0594, 0613, 0614, 0618, 0682, 0684, 0692, 0701, 0702, 0703, 0704, 0706, 0711
Chicago: 0214, 0218, 0219, 0239, 0243, 0244, 0265, 0270, 0352	Palatine: 0038, 0039, 0043, 0044, 0177, 0179, 0181, 0182, 0183
0356, 0357, 0358, 0359, 0376, 0378, 0380, 0382, 0385, 0386, 0387	Palos Heights: 0612, 0614, 0616, 0617, 0618, 0619
0395, 0401, 0402, 0403, 0404, 0410, 0415, 0416, 0417, 0418, 0419	Palos Hills: 0603, 0604, 0608, 0611, 0612, 0616
0438, 0440, 0484, 0485, 0491, 0492, 0495, 0503, 0504, 0505, 0506	Palos Park: 0592, 0594, 0611, 0612, 0613, 0614, 0616
0507, 0508, 0509, 0510, 0520, 0526, 0528, 0529, 0540, 0545, 0528	Park Forest: 0739, 0743, 0802, 0806, 0807
0630, 0635, 0636, 0637, 0645, 0655, 0658, 0659, 0660, 0661, 0662	Park Ridge: 0236, 0237, 0238, 0239, 0376, 0380
0663, 0664, 0668, 0669, 0670	Phoenix: 0732, 0751
Cicero: 0484, 0485, 0503, 0505	Posen: 0639, 0643, 0727, 0731
Country Club Hills: 0728, 0729, 0736, 0737	Prospect Heights: 0201, 0202, 0206, 0207, 0208
Countryside: 0467, 0469, 0486, 0488	Richton Park: 0781, 0782, 0801, 0802
Crestwood: 0617, 0619, 0636, 0638, 0639	River Forest: 0367, 0369, 0395
Deer Park: 0038, 0039, 0043	River Grove: 0380, 0386, 0387
Deerfield: 0069, 0088, 0089	Riverview: 0643, 0644, 0645, 0661, 0663
Des Plaines: 0208, 0209, 0212, 0214, 0216, 0217, 0218, 0219, 0236	Riverside: 0479, 0483
0238, 0357, 0376	Robbins: 0638, 0639
Dimmock: 0643, 0644, 0731	Rolling Meadows: 0179, 0181, 0182, 0183, 0184, 0191, 0192, 0211
Dolton: 0644, 0663, 0664, 0732, 0751, 0752	Roselle: 0193, 0330, 0331
East Dundee: 0155	Rosemont: 0219, 0357, 0376
East Hazel Crest: 0733, 0734	Sauk Village: 0754, 0769, 0826, 0827, 0831
Elgin: 0135, 0142, 0144, 0155, 0161, 0163, 0305	Schaumburg: 0167, 0169, 0179, 0183, 0184, 0186, 0187, 0188, 0189, 0191, 0192, 0193, 0194, 0307, 0330
Elk Grove Village: 0193, 0194, 0211, 0213, 0214, 0218, 0331, 0332, 0351, 0352	Schiller Park: 0357, 0359, 0376, 0378
Elmhurst: 0456	Skokie: 0234, 0242, 0244, 0253, 0265
Elmwood Park: 0380, 0387, 0395	South Barrington: 0155, 0156, 0157, 0158, 0159, 0176, 0178
Evanston: 0253, 0255, 0260, 0265, 0270	South Chicago Heights: 0807, 0826
Evergreen Park: 0628, 0630, 0635	South Holland: 0732, 0734, 0751, 0752, 0753, 0754
Flossmoor: 0737, 0739, 0741, 0742, 0743, 0744	Steger: 0807, 0826, 0827
Ford Heights: 0763, 0764, 0768, 0826, 0827	Stickney: 0483, 0484, 0491, 0503
Forest Park: 0389, 0395, 0477, 0485	Stone Park: 0367, 0369, 0386, 0388
Forest View: 0484, 0491, 0492	Streamwood: 0162, 0163, 0164, 0166, 0167, 0168, 0169, 0306
Frankfort: 0781, 0782	Summit: 0487, 0489, 0491, 0495
Franklin Park: 0358, 0359, 0366, 0367, 0378, 0386	Thornton: 0734, 0742, 0753, 0761
Glencoe: 0093, 0094, 0113, 0231, 0232, 0251	Tinley Park: 0702, 0703, 0704, 0706, 0707, 0708, 0709, 0711, 0712, 0716, 0717, 0719
Glenview: 0207, 0209, 0226, 0227, 0228, 0229, 0231, 0233, 0234, 0236, 0237, 0241	University Park: 0801
Glenwood: 0742, 0761, 0762, 0763, 0764	Westchester: 0456, 0457, 0458, 0459, 0476
Golf: 0233, 0234, 0241, 0242	Western Springs: 0458, 0459, 0460, 0467, 0468, 0469
Hanover Park: 0168, 0169, 0306, 0307	Wheeling: 0054, 0058, 0059, 0202, 0206, 0207
Harvey: 0643, 0644, 0731, 0732, 0734, 0751	Willow Springs: 0469, 0488, 0581, 0582, 0583, 0584, 0601
Hawthorn Heights: 0380, 0385	Wilmette: 0234, 0253, 0255, 0260
Hazel Crest: 0729, 0733, 0734, 0737	Winnetka: 0115, 0252, 0251, 0253, 0255
Hickory Hills: 0601, 0602, 0603, 0604, 0606, 0608	Worth: 0608, 0609, 0616, 0617
Hillside: 0368, 0369, 0456, 0457	
Hinsdale: 0458, 0466, 0467, 0468, 0469	
Hodgkins: 0469, 0469, 0467, 0468, 0469, 0582, 0601	
Hoffman Estates: 0155, 0157, 0158, 0159, 0161, 0162, 0166, 0167, 0176, 0178, 0179, 0186, 0187, 0188, 0189, 0191	
Homewood: 0630	
Homeville: 0729, 0733, 0734, 0737, 0741, 0742	
Indian Head Park: 0468, 0469	
Inverness: 0020, 0038, 0039, 0157, 0176, 0177, 0178, 0179	
Justice: 0488, 0489, 0601, 0602	
Kennilworth: 0253, 0255	
La Grange Park: 0459, 0476	
La Grange: 0459, 0467	



NOTES TO USER:

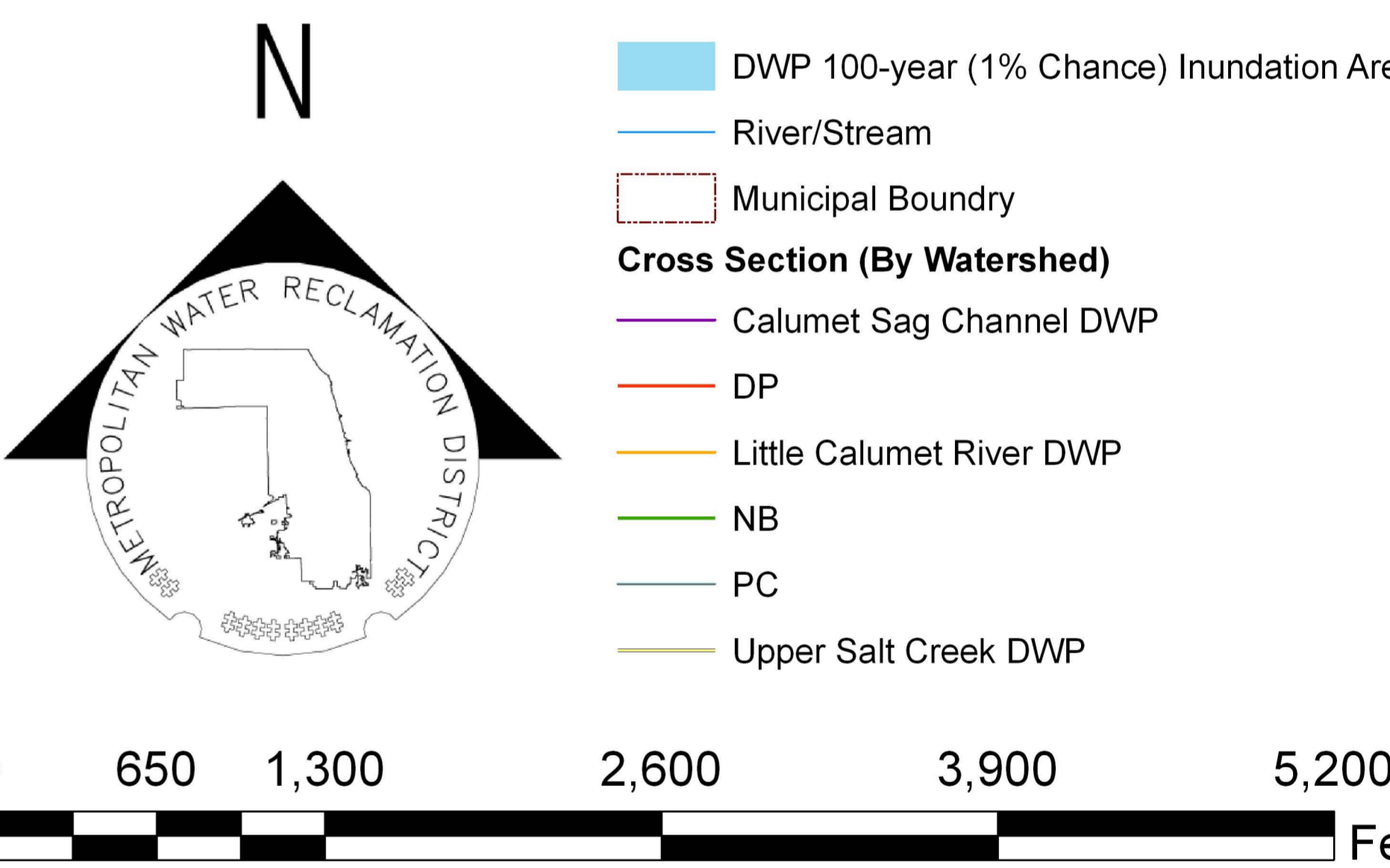
The inundation areas and water surface elevations shown on this map were developed as part of the Metropolitan Water Reclamation District of Greater Chicago's (MWRD) Stormwater Management Program. Specific details regarding the development of the new models used to generate the maps are described in MWRD's Detailed Watershed Plans, which are available for download at www.mwrdd.org. To access, click on "Services & Facilities" in the top navigation bar, click on "Stormwater Management", and then click on "Stormwater Annual Reports and Publications" on the left navigation bar of the Stormwater Management webpage.

This map does not delineate floodways. The information contained on this map is in addition to and does not substitute for the relevant Federal Emergency Management Agency's (FEMA) Flood Insurance Study (FIS) and associated Flood Insurance Rate Map (FIRM).

Elevations stated on this map are consistent with the North American Vertical Datum (NAVD) 1988. Flood elevations must be compared to ground structures referenced to the same datum. Hydraulic profiles of modeled waterways are available for download at www.mwrdd.org. To access, click on "Services & Facilities" in the top navigation bar, click on "Stormwater Management", and then click on "Inundation Maps & Profiles" on the left navigation bar of the Stormwater Management webpage.

The corporate limits shown on this map are based on the best information available at the time of study.

If you have questions on this map, please contact the MWRD's Engineering Department-Stormwater Management Section, at 312-751-5600, or via e-mail Stormwater@mwrdd.org.



Panel Index

	0015	0020		
0136	0155	0156	0157	0158
0164	0142	0163	0161	0162
0165	0166	0168	0167	0169
0170	0171	0172	0173	0174
0175	0176	0177	0178	0179
0180	0181	0183	0181	0183
0184	0182	0184	0182	0184
0187	0188	0189	0187	0189
0190	0191	0193	0191	0193
0194	0192	0194	0192	0194
0197	0198	0199	0197	0199
0200	0201	0203	0201	0203
0204	0202	0204	0202	0204
0207	0208	0209	0207	0209
0210	0211	0213	0211	0213
0214	0212	0214	0212	0214
0217	0218	0219	0217	0219
0220	0221	0223	0221	0223
0224	0222	0224	0222	0224
0227	0228	0229	0227	0229
0230	0231	0233	0231	0233
0234	0232	0234	0232	0234
0237	0238	0239	0237	0239
0240	0241	0243	0241	0243
0244	0242	0244	0242	0244
0247	0248	0249	0247	0249
0250	0251	0253	0251	0253
0254	0252	0254	0252	0254
0257	0258	0259	0257	0259
0260	0261	0263	0261	0263
0264	0262	0264	0262	0264
0267	0268	0269	0267	0269
0270	0271	0273	0271	0273
0274	0272	0274	0272	0274
0277	0278	0279	0277	0279
0280	0281	0283	0281	0283
0284	0282	0284	0282	0284
0287	0288	0289	0287	0289
0290	0291	0293	0291	0293
0294	0292	0294	0292	0294
0297	0298	0299	0297	0299
0300	0301	0303	0301	0303
0304	0302	0304	0302	0304
0307	0308	0309	0307	0309
0310	0311	0313	0311	0313
0314	0312	0314	0312	0314
0317	0318	0319	0317	0319
0320	0321	0323	0321	0323
0324	0322	0324	0322	0324
0327	0328	0329	0327	0329
0330	0331	0333	0331	0333
0334	0332	0334	0332	0334
0337	0338	0339	0337	0339
0340	0341	0343	0341	0343
0344	0342	0344	0342	0344
0347	0348	0349	0347	0349
0350	0351	0353	0351	0353
0354	0352	0354	0352	0354
0357	0358	0359	0357	0359
0360	0361	0363	0361	0363
0364	0362	0364	0362	0364
0367	0368	0369	0367	0369
0370	0371	0373	0371	0373
0374	0372	0374	0372	0374
0377	0378	0379	0377	0379
0380	0381	0383	0381	0383
0384	0382	0384	0382	0384
0387	0388	0389	0387	0389
0390	0391	0393	0391	0393
0394	0392	0394	0392	0394
0397	0398	0399	0397	0399
0400	0401	0403	0401	0403
0404	0402	0404	0402	0404
0407	0408	0409	0407	0409
0410	0411	0413	0411	0413
0414	0412	0414	0412	0414
0417	0418	0419	0417	0419
0420	0421	0423	0421	0423
0424	0422	0424	0422	0424
0427	0428	0429	0427	0429
0430	0431	0433	0431	0433
0434	0432	0434	0432	0434
0437	0438	0439	0437	0439
0440	0441	0443	0441	0443
0444	0442	0444	0442	0444
0447	0448	0449	0447	0449
0450	0451	0453	0451	0453
0454	0452	0454	0452	0454
0457	0458	0459	0457	0459
0460	0461	0463	0461	0463
0464	0462	0464	0462	0464
0467	0468	0469	04	