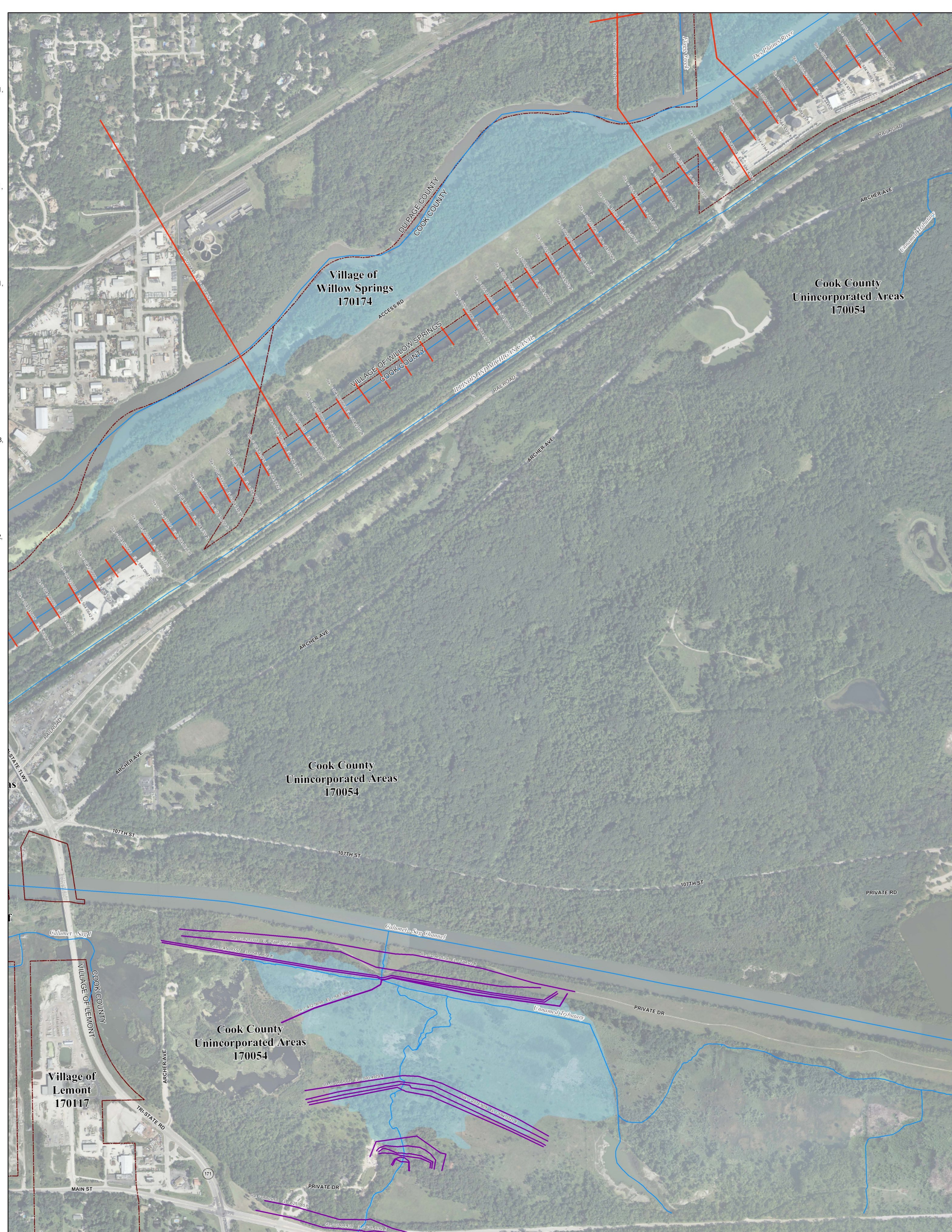


Municipality Index

Alsip: 0609, 0617, 0628, 0636, 0637, 0638, 0639	La Grange Park: 0478
Arlington Heights: 0044, 0063, 0064, 0162, 0164, 0192, 0201, 0202, 0203, 0204, 0211, 0212	La Grange: 0478, 0486
Barrington Hills: 0015, 0020, 0155, 0156, 0157	Lansing: 0754, 0756, 0758, 0759, 0762, 0766, 0767
Barrington: 0223, 0238	Lemont: 0567, 0569, 0579, 0583, 0586, 0587, 0588, 0589, 0591, 0593
Bartlett: 0144, 0163, 0164, 0168, 0285, 0305, 0306	Lincolnwood: 0244, 0265, 0382, 0401, 0402
Bedford Park: 0487, 0488, 0489, 0495, 0515, 0606	Lynwood: 0762, 0764, 0766, 0767, 0768, 0769, 0831, 0832
Bellwood: 0369, 0388, 0457, 0476	Lyns: 0479, 0483, 0487, 0491
Beneseville: 0358	Markham: 0726, 0727, 0729, 0731, 0732, 0733, 0734
Berkeley: 0368, 0369, 0456	Matteson: 0718, 0719, 0738, 0739, 0781, 0782, 0801, 0802
Berwyn: 0483, 0484, 0485	Maywood: 0388, 0389, 0476, 0477
Blue Island: 0637, 0639, 0643, 0644, 0645	Melrose Park: 0367, 0369, 0386, 0387, 0388, 0389
Broadview: 0483, 0485, 0602, 0606, 0609	Merriette Park: 0630, 0637
Brookfield: 0478, 0479, 0486, 0487	Middleton: 0619, 0638, 0639, 0707, 0726, 0727
Buffalo Grove: 0653, 0664	Morton Grove: 0237, 0241, 0242, 0243, 0244
Burbank: 0495, 0515, 0606, 0607, 0630	Mount Prospect: 0202, 0203, 0204, 0206, 0207, 0208, 0209, 0211, 0212, 0214, 0216
Burnham: 0664, 0668, 0669	Niles: 0236, 0237, 0238, 0239, 0241, 0243, 0244
Burr Ridge: 0466, 0468, 0469, 0581, 0582	Northbrook: 0476, 0477, 0479, 0483, 0485
Calumet City: 0664, 0668, 0669, 0752, 0754, 0756, 0757, 0758, 0759	Northridge: 0669, 0688, 0689, 0693, 0207, 0226, 0227, 0231, 0232
Calumet Park: 0643, 0644, 0645	Northfield: 0231, 0232, 0233, 0234
Chicago Heights: 0742, 0743, 0744, 0763, 0806, 0807, 0826	Northlake: 0366, 0367, 0368, 0369
Chicago Ridge: 0606, 0607, 0608, 0609	Oak Forest: 0618, 0619, 0706, 0707, 0709, 0726, 0727, 0728, 0729
Chicago: 0214, 0218, 0219, 0239, 0243, 0244, 0265, 0270, 0352, 0356, 0357, 0358, 0359, 0376, 0378, 0380, 0382, 0385, 0386, 0387, 0395, 0401, 0402, 0403, 0404, 0410, 0415, 0416, 0417, 0418, 0419, 0438, 0440, 0484, 0485, 0491, 0492, 0495, 0503, 0504, 0505, 0506, 0507, 0508, 0519, 0520, 0525, 0528, 0529, 0540, 0545, 0628, 0630, 0635, 0636, 0637, 0645, 0655, 0658, 0659, 0660, 0661, 0662, 0663, 0664, 0668, 0669, 0670	Oak Park: 0395, 0495
Claremont: 0484, 0485, 0503, 0505	Olympia Fields: 0739, 0743
Country Club Hills: 0728, 0729, 0736, 0737	Orland Hills: 0701, 0702, 0703, 0704
Countryside: 0467, 0469, 0486, 0488	Orland Park: 0593, 0594, 0613, 0614, 0618, 0682, 0684, 0692, 0701, 0702, 0703, 0704, 0706, 0711
Crestwood: 0617, 0619, 0636, 0638, 0639	Palatine: 0038, 0039, 0043, 0044, 0177, 0179, 0181, 0182, 0183
Deerfield: 0069, 0088, 0089	Palos Heights: 0612, 0614, 0616, 0617, 0618, 0619
Des Plaines: 0208, 0209, 0212, 0214, 0216, 0217, 0218, 0219, 0236, 0238, 0357, 0376	Palos Hills: 0603, 0604, 0608, 0611, 0612, 0616
Dimmo: 0643, 0644, 0731	Palos Park: 0592, 0594, 0611, 0612, 0613, 0614, 0616
Dolton: 0644, 0663, 0664, 0732, 0751, 0752	Park Forest: 0739, 0743, 0802, 0806, 0807
East Dundee: 0155	Park Ridge: 0236, 0237, 0238, 0239, 0376, 0380
East Hazel Crest: 0733, 0734	Phoenix: 0732, 0751
Elgin: 0135, 0142, 0144, 0155, 0161, 0163, 0305	Poseen: 0639, 0643, 0727, 0731
Elk Grove Village: 0193, 0194, 0211, 0213, 0214, 0218, 0331, 0332, 0351, 0352	Prospect Heights: 0201, 0202, 0206, 0207, 0208
Elmhurst: 0456	Richton Park: 0781, 0782, 0801, 0802
Elmwood Park: 0380, 0387, 0395	River Forest: 0367, 0389, 0395
Evanston: 0253, 0255, 0260, 0265, 0270	River Grove: 0380, 0386, 0387
Evergreen Park: 0628, 0630, 0635	Riverside: 0479, 0483
Flossmoor: 0737, 0739, 0741, 0742, 0743, 0744	Robbins: 0638, 0639
Ford Heights: 0763, 0764, 0768, 0826, 0827	Rolling Meadows: 0179, 0181, 0182, 0183, 0184, 0191, 0192, 0211, 0212, 0330, 0331
Forest Park: 0389, 0395, 0477, 0485	Rosemont: 0219, 0357, 0376
Forest View: 0484, 0491, 0492	Sauk Village: 0754, 0769, 0826, 0827, 0831
Frankfort: 0781, 0782	Schaumburg: 0167, 0169, 0179, 0183, 0184, 0186, 0187, 0188, 0189, 0191, 0192, 0193, 0194, 0307, 0330
Franklin Park: 0358, 0359, 0366, 0367, 0378, 0386	Schiller Park: 0357, 0359, 0376, 0378
Glencoe: 0093, 0094, 0113, 0231, 0232, 0251	Skokie: 0234, 0242, 0244, 0253, 0265
Glenview: 0207, 0209, 0226, 0227, 0228, 0229, 0231, 0233, 0234, 0236, 0237, 0241	South Barrington: 0155, 0156, 0157, 0158, 0159, 0176, 0178
Glenwood: 0742, 0761, 0762, 0763, 0764	South Chicago Heights: 0907, 0826
Golf: 0233, 0234, 0241, 0242	South Holland: 0732, 0734, 0751, 0752, 0753, 0754
Hanover Park: 0168, 0169, 0306, 0307	Steger: 0807, 0826, 0827
Harvey: 0643, 0644, 0731, 0732, 0734, 0751	Stickney: 0483, 0484, 0491, 0503
Harwood Heights: 0380, 0385	Stone Park: 0367, 0369, 0386, 0388
Hazel Crest: 0729, 0733, 0734, 0737	Streamwood: 0162, 0163, 0164, 0166, 0167, 0168, 0169, 0306
Hickory Hills: 0601, 0602, 0603, 0604, 0606, 0608	Summit: 0487, 0489, 0491, 0495
Hillside: 0368, 0369, 0456, 0457	Thornton: 0734, 0742, 0753, 0761
Hinsdale: 0458, 0466, 0467, 0468, 0469	Tinley Park: 0702, 0703, 0704, 0706, 0707, 0708, 0709, 0711, 0712, 0716, 0717, 0719
Hodgkins: 0469, 0469, 0467, 0468, 0469, 0502, 0601	University Park: 0801
Hoffman Estates: 0159, 0157, 0158, 0159, 0161, 0162, 0166, 0167, 0176, 0178, 0179, 0186, 0187, 0188, 0189, 0191	Westchester: 0456, 0457, 0458, 0459, 0476
Hometown: 0630	Western Springs: 0458, 0459, 0460, 0467, 0468, 0469
Homewood: 0729, 0733, 0734, 0737, 0741, 0742	Wheeling: 0054, 0058, 0059, 0202, 0206, 0207
Indian Head Park: 0468, 0469	Willow Springs: 0469, 0488, 0581, 0582, 0583, 0584, 0601
Inverness: 0020, 0038, 0039, 0157, 0176, 0177, 0178, 0179	Wilmette: 0234, 0253, 0255, 0260
Justice: 0488, 0489, 0601, 0602	Wilmette: 0113, 0232, 0251, 0253, 0255
Kaneland: 0253, 0255	Worth: 0608, 0609, 0616, 0617
La Grange Park: 0459, 0476	
La Grange: 0459, 0467	

Panel Index

Not available. Contact MWRD for further information



NOTES TO USER:

The inundation areas and water surface elevations shown on this map were developed as part of the Metropolitan Water Reclamation District of Greater Chicago's (MWRD) Stormwater Management Program. Specific details regarding the development of the new models used to generate the maps are described in MWRD's Detailed Watershed Plans, which are available for download at www.mwr.org. To access, click on "Services & Facilities" in the top navigation bar, click on "Stormwater Management", and then click on "Stormwater Annual Reports and Publications" on the left navigation bar of the Stormwater Management webpage.

This map does not delineate floodways. The information contained on this map is in addition to and does not substitute for the relevant Federal Emergency Management Agency's (FEMA) Flood Insurance Study (FIS) and associated Flood Insurance Rate Map (FIRM).

Elevations stated on this map are consistent with the North American Vertical Datum (NAVD) 1988. Flood elevations must be compared to ground structures referenced to the same datum. Hydraulic profiles of modeled waterways are available for download at www.mwr.org. To access, click on "Services & Facilities" in the top navigation bar, click on "Stormwater Management", and then click on "Inundation Maps & Profiles" on the left navigation bar of the Stormwater Management webpage.

The corporate limits shown on this map are based on the best information available at the time of study.

If you have questions on this map, please contact the MWRD's Engineering Department-Stormwater Management Section, at 312-751-5600, or via e-mail Stormwater@mwr.org.

- DWP 100-year (1% Chance) Inundation Area
- River/Stream
- Municipal Boundary
- Cross Section (By Watershed)**
- Calumet Sag Channel DWP
- DP
- Little Calumet River DWP
- NB
- PC
- Upper Salt Creek DWP

Metropolitan Water Reclamation District of Greater Chicago

Cook County Inundation Map

Panel 0583

The area depicted in this map corresponds to FEMA's DFIRM Panel: 17031C0583J