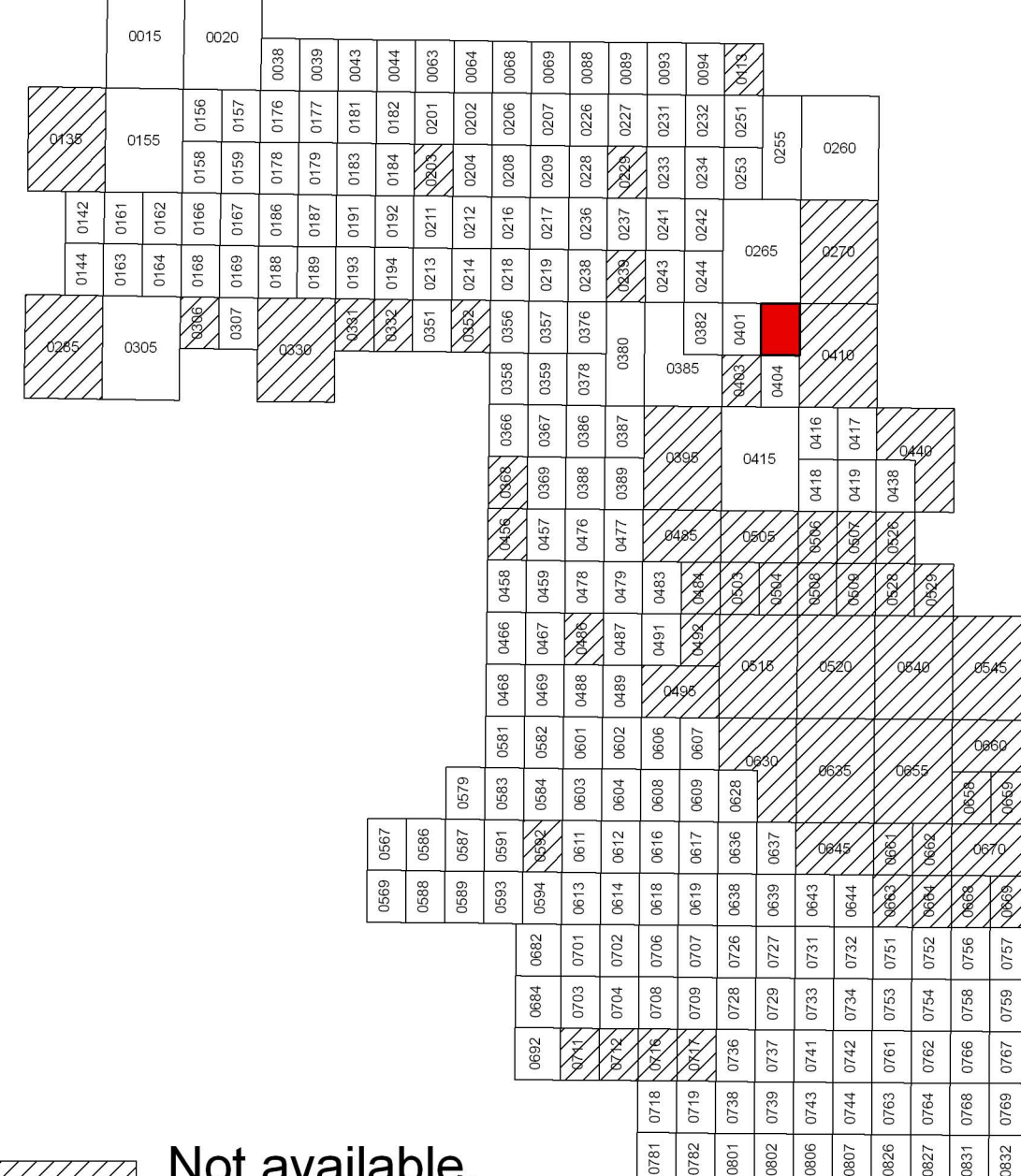


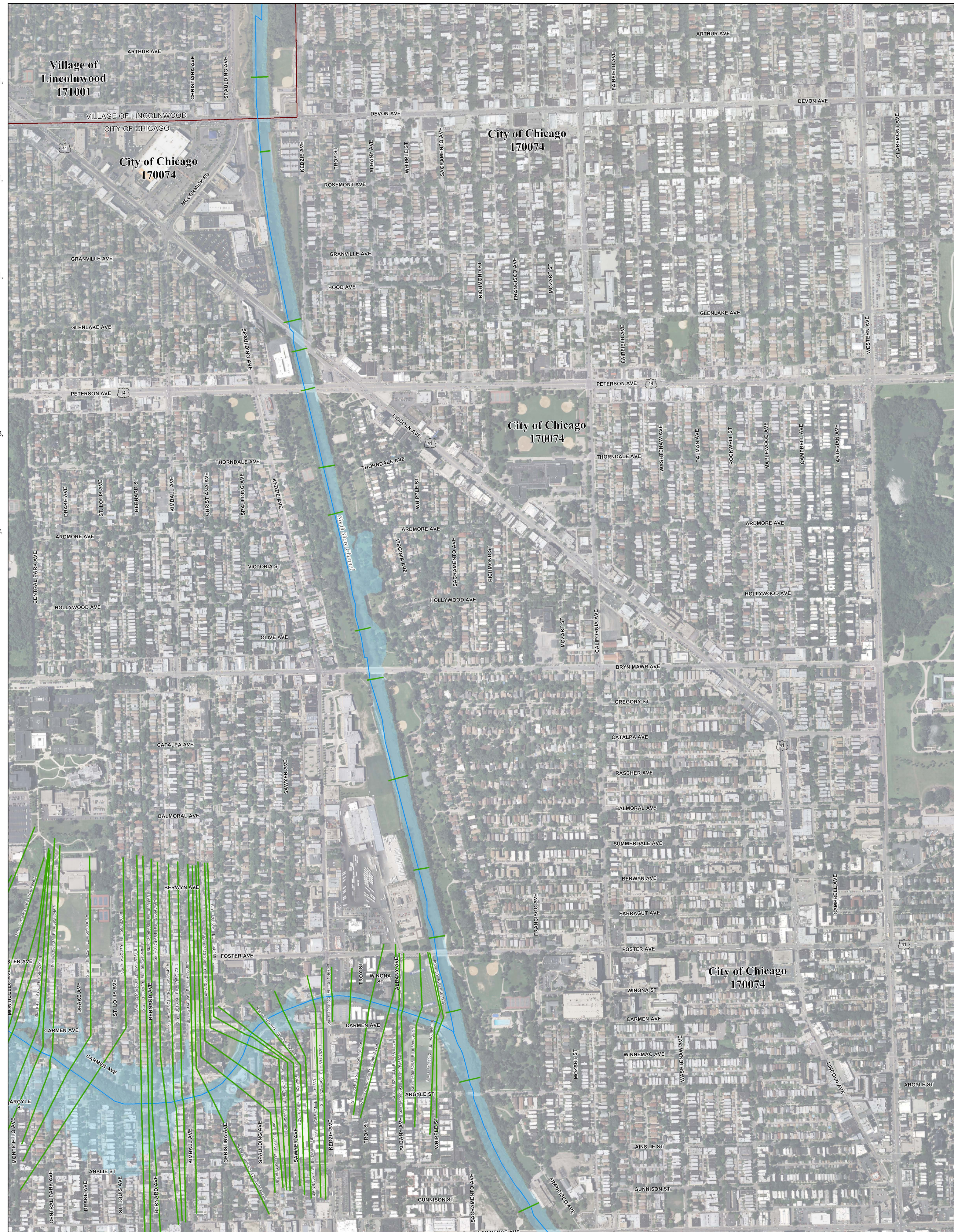
Municipality Index

- | | |
|---|--|
| Alsip: 0609, 0617, 0628, 0636, 0637, 0638, 0639 | La Grange Park: 0478 |
| Arlington Heights: 0044, 0063, 0064, 0162, 0184, 0192, 0201, 0202, 0203, 0204, 0211, 0212 | La Grange: 0478, 0486 |
| Barrington Hills: 0015, 0020, 0155, 0156, 0157 | Lansing: 0754, 0756, 0758, 0759, 0762, 0766, 0767 |
| Barrington: 0020, 0038 | LeMott: 0567, 0569, 0579, 0583, 0586, 0587, 0588, 0589, 0591, 0593 |
| Bartlett: 0144, 0163, 0164, 0168, 0285, 0305, 0306 | Lincolnwood: 0244, 0265, 0382, 0401, 0402 |
| Bedford Park: 0487, 0488, 0489, 0495, 0515, 0606 | Lyons: 0479, 0483, 0487, 0491 |
| Bellwood: 0369, 0388, 0457, 0476 | Markham: 0726, 0727, 0730, 0731, 0732, 0733, 0734 |
| Bensenville: 0358, 0359 | Mattoon: 0718, 0719, 0738, 0739, 0781, 0782, 0801, 0802 |
| Berkeley: 0368, 0369, 0456 | Maywood: 0388, 0389, 0476, 0477 |
| Berwyn: 0483, 0484, 0485 | Mc Cook: 0486, 0487, 0491 |
| Blue Island: 0637, 0639, 0643, 0644, 0645 | Melrose Park: 0367, 0369, 0386, 0387, 0388, 0389 |
| Blue Bell: 0603, 0604 | Merrionette Park: 0630, 0637 |
| Broadview: 0476, 0477 | Midlothian: 0619, 0638, 0639, 0707, 0726, 0727 |
| Brookfield: 0478, 0479, 0486, 0487 | Morton Grove: 0237, 0241, 0242, 0243, 0244 |
| Buffalo Grove: 0663, 0664 | Mount Prospect: 0202, 0203, 0204, 0206, 0207, 0208, 0209, 0211, 0212, 0214, 0216 |
| Burbank: 0495, 0515, 0606, 0607, 0630 | Niles: 0238, 0237, 0238, 0239, 0241, 0243, 0244 |
| Burnham: 0664, 0668, 0669 | Northridge: 0378, 0379, 0380, 0385 |
| Burr Ridge: 0466, 0468, 0469, 0561, 0582 | North Riverside: 0476, 0477, 0479, 0483, 0485 |
| Calumet City: 0664, 0668, 0669, 0752, 0754, 0756, 0757, 0758, 0759 | Northbrook: 0069, 0088, 0089, 0093, 0207, 0225, 0227, 0231, 0232 |
| Calumet Park: 0643, 0644, 0645 | Northfield: 0231, 0232, 0233, 0234 |
| Chicago Heights: 0742, 0743, 0744, 0763, 0806, 0807, 0826 | Northlake: 0366, 0367, 0368, 0369 |
| Chicago Ridge: 0606, 0607, 0608, 0609 | Oak Forest: 0618, 0619, 0706, 0707, 0709, 0726, 0727, 0728, 0729 |
| Chicago: 0214, 0218, 0219, 0239, 0243, 0244, 0265, 0270, 0352, 0356, 0357, 0358, 0359, 0376, 0378, 0380, 0382, 0385, 0386, 0387, 0395, 0401, 0402, 0403, 0404, 0410, 0415, 0416, 0417, 0418, 0419, 0438, 0440, 0484, 0485, 0491, 0492, 0495, 0503, 0504, 0505, 0506, 0507, 0538, 0539, 0540, 0545, 0546, 0548, 0549, 0550, 0551, 0552, 0553, 0554, 0555, 0556, 0557, 0558, 0559, 0560, 0561, 0562, 0563, 0565, 0636, 0637, 0645, 0655, 0658, 0659, 0660, 0661, 0662, 0663, 0664, 0668, 0669, 0670 | Oak Park: 0395, 0485 |
| Cicero: 0484, 0485, 0503, 0505 | Olympia Fields: 0738, 0743 |
| Country Club Hills: 0728, 0729, 0736, 0737 | Orland Hills: 0701, 0702, 0703, 0704 |
| Countryside: 0467, 0469, 0486, 0488 | Orland Park: 0593, 0594, 0613, 0614, 0618, 0682, 0684, 0692, 0701, 0702, 0703, 0704, 0706, 0711 |
| Crestwood: 0617, 0619, 0636, 0638, 0639 | Palatine: 0038, 0039, 0043, 0044, 0177, 0179, 0181, 0182, 0183 |
| Deerfield: 0069, 0088, 0089 | Palos Heights: 0612, 0614, 0616, 0617, 0618, 0619 |
| Des Plaines: 0208, 0209, 0212, 0214, 0216, 0217, 0218, 0219, 0236, 0238, 0357, 0376 | Palos Hills: 0603, 0604, 0608, 0611, 0612, 0616 |
| Dimmo: 0643, 0644, 0731 | Palos Park: 0592, 0594, 0611, 0612, 0613, 0614, 0616 |
| Dolton: 0644, 0663, 0664, 0732, 0751, 0752 | Park Forest: 0739, 0743, 0802, 0806, 0807 |
| East Dundee: 0155 | Park Ridge: 0236, 0237, 0238, 0239, 0376, 0380 |
| East Hazel Crest: 0733, 0734 | Phoenix: 0732, 0751 |
| Elgin: 0135, 0142, 0144, 0155, 0161, 0163, 0305 | Posen: 0639, 0643, 0727, 0731 |
| Elk Grove Village: 0193, 0194, 0211, 0213, 0214, 0218, 0331, 0332, 0351, 0352 | Prospect Heights: 0201, 0202, 0206, 0207, 0208 |
| Elmhurst: 0456 | Richton Park: 0781, 0782, 0801, 0802 |
| Elmwood Park: 0380, 0387, 0395 | River Forest: 0367, 0369, 0395 |
| Evanston: 0253, 0255, 0260, 0265, 0270 | River Grove: 0380, 0386, 0387 |
| Evergreen Park: 0628, 0630, 0635 | Riverside: 0479, 0483 |
| Flossmoor: 0737, 0739, 0741, 0742, 0743, 0744 | Robbins: 0638, 0639 |
| Ford Heights: 0763, 0764, 0768, 0826, 0827 | Rolling Meadows: 0179, 0181, 0182, 0183, 0184, 0191, 0192, 0211 |
| Forest Park: 0389, 0395, 0477, 0485 | Roselle: 0193, 0330, 0331 |
| Forest View: 0484, 0491, 0492 | Rosemont: 0219, 0357, 0376 |
| Frankfort: 0781, 0782 | Sauk Village: 0754, 0759, 0828, 0827, 0831 |
| Franklin Park: 0358, 0359, 0366, 0367, 0378, 0386 | Schaumburg: 0167, 0169, 0179, 0183, 0184, 0186, 0187, 0188, 0189, 0191, 0192, 0193, 0194, 0307, 0330 |
| Glencoe: 0093, 0094, 0113, 0231, 0232, 0251 | Schiller Park: 0357, 0359, 0376, 0378 |
| Glenview: 0207, 0209, 0226, 0227, 0228, 0229, 0231, 0233, 0234, 0236, 0237, 0241 | Shaker: 0234, 0242, 0244, 0253, 0265 |
| Glenwood: 0742, 0761, 0762, 0763, 0764 | South Barrington: 0155, 0156, 0157, 0158, 0159, 0176, 0178 |
| Golf: 0233, 0234, 0241, 0242 | South Chicago Heights: 0807, 0826 |
| Granville: 0168, 0169, 0306, 0307 | South Holland: 0732, 0734, 0751, 0752, 0753, 0754 |
| Harvey: 0643, 0644, 0731, 0732, 0734, 0751 | Steger: 0807, 0826, 0827 |
| Harwood Heights: 0380, 0385 | Stickney: 0483, 0484, 0491, 0503 |
| Hazel Crest: 0729, 0733, 0734, 0737 | Stone Park: 0367, 0369, 0386, 0388 |
| Hickory Hills: 0601, 0602, 0603, 0604, 0606, 0608 | Streamwood: 0162, 0163, 0164, 0166, 0167, 0168, 0169, 0306 |
| Hillside: 0368, 0369, 0456, 0457 | Summit: 0487, 0489, 0491, 0495 |
| Hinsdale: 0458, 0466, 0467, 0468, 0469 | Thornton: 0734, 0742, 0753, 0761 |
| Hodgkins: 0469, 0489, 0487, 0489, 0489, 0582, 0601 | Triley Park: 0702, 0703, 0704, 0706, 0707, 0708, 0709, 0711, 0712, 0716, 0717, 0719 |
| Hoffman Estates: 0155, 0157, 0158, 0159, 0161, 0162, 0166, 0167, 0176, 0178, 0186, 0187, 0188, 0189, 0191 | University Park: 0801 |
| Hometown: 0630 | Westchester: 0456, 0457, 0458, 0459, 0476 |
| Homewood: 0729, 0733, 0734, 0737, 0741, 0742 | Western Springs: 0458, 0459, 0460, 0467, 0468, 0469 |
| Indian Head Park: 0468, 0469 | Wheeling: 0054, 0058, 0059, 0022, 0206, 0207 |
| Inverness: 0020, 0038, 0039, 0157, 0176, 0177, 0178, 0179 | Willow Springs: 0469, 0488, 0581, 0582, 0583, 0584, 0601 |
| Justice: 0488, 0489, 0601, 0602 | Wilmette: 0234, 0253, 0255, 0260 |
| La Grange Park: 0459, 0476 | Winnetka: 0113, 0232, 0251, 0253, 0255 |
| La Grange: 0459, 0467 | Worth: 0608, 0609, 0616, 0617 |

Panel Index



Not available.
Contact MWRD for further information



NOTES TO USER:

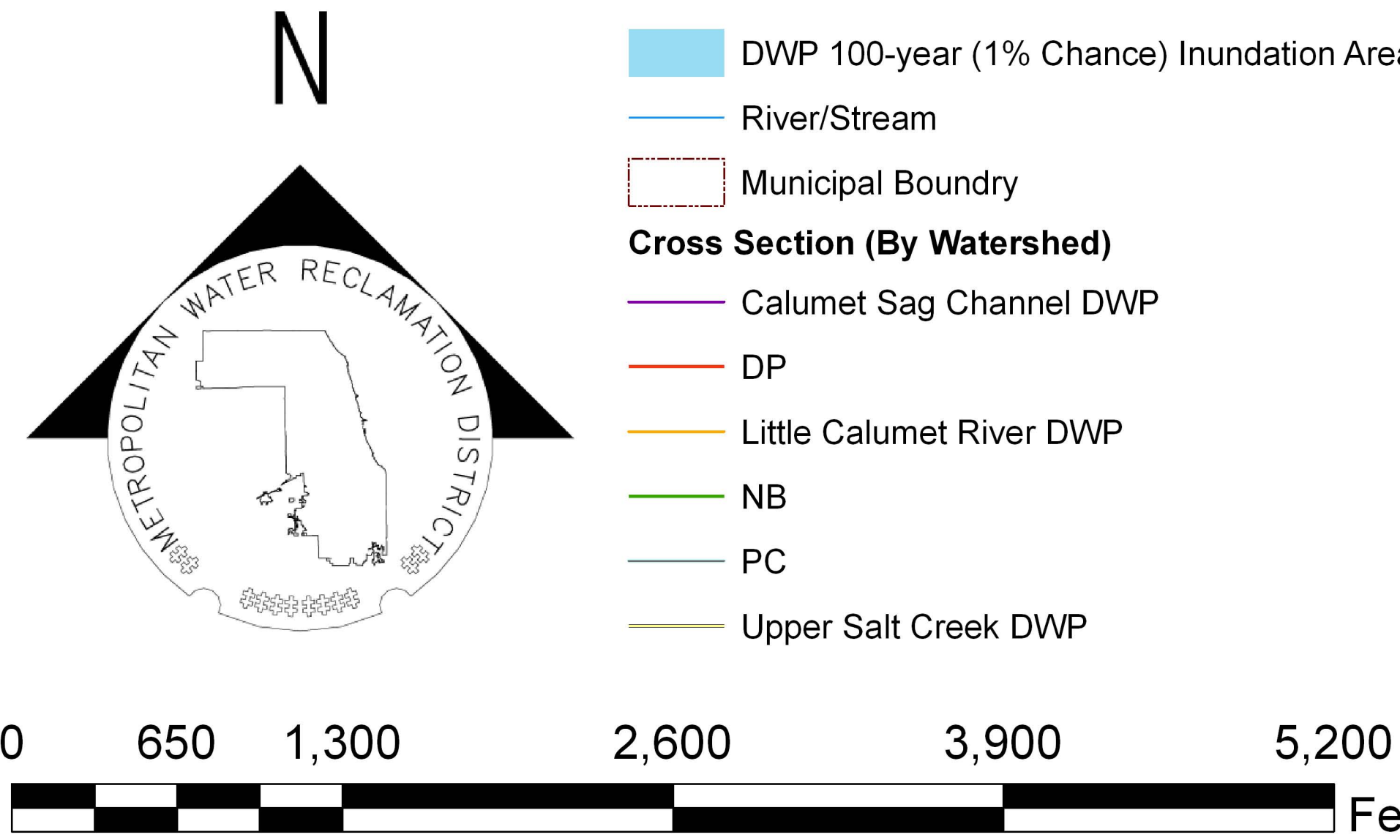
The inundation areas and water surface elevations shown on this map were developed as part of the Metropolitan Water Reclamation District of Greater Chicago's (MWRD) Stormwater Management Program. Specific details regarding the development of the new models used to generate the maps are described in MWRD's Detailed Watershed Plans, which are available for download at www.mwrdd.org. To access, click on "Services & Facilities" in the top navigation bar, click on "Stormwater Management", and then click on "Stormwater Annual Reports and Publications" on the left navigation bar of the Stormwater Management webpage.

This map does not delineate floodways. The information contained on this map is in addition to and does not substitute for the relevant Federal Emergency Management Agency's (FEMA) Flood Insurance Study (FIS) and associated Flood Insurance Rate Map (FIRM).

Elevations stated on this map are consistent with the North American Vertical Datum (NAVD) 1988. Flood elevations must be compared to ground structures referenced to the same datum. Hydraulic profiles of modeled waterways are available for download at www.mwrdd.org. To access, click on "Services & Facilities" in the top navigation bar, click on "Stormwater Management", and then click on "Inundation Maps & Profiles" on the left navigation bar of the Stormwater Management webpage.

The corporate limits shown on this map are based on the best information available at the time of study.

If you have questions on this map, please contact the MWRD's Engineering Department-Stormwater Management Section, at 312-751-5600, or via e-mail Stormwater@mwrdd.org.



Cook County Inundation Map

Panel 0402

The area depicted in this map corresponds to FEMA's DFIRM Panel: 17031C0402J