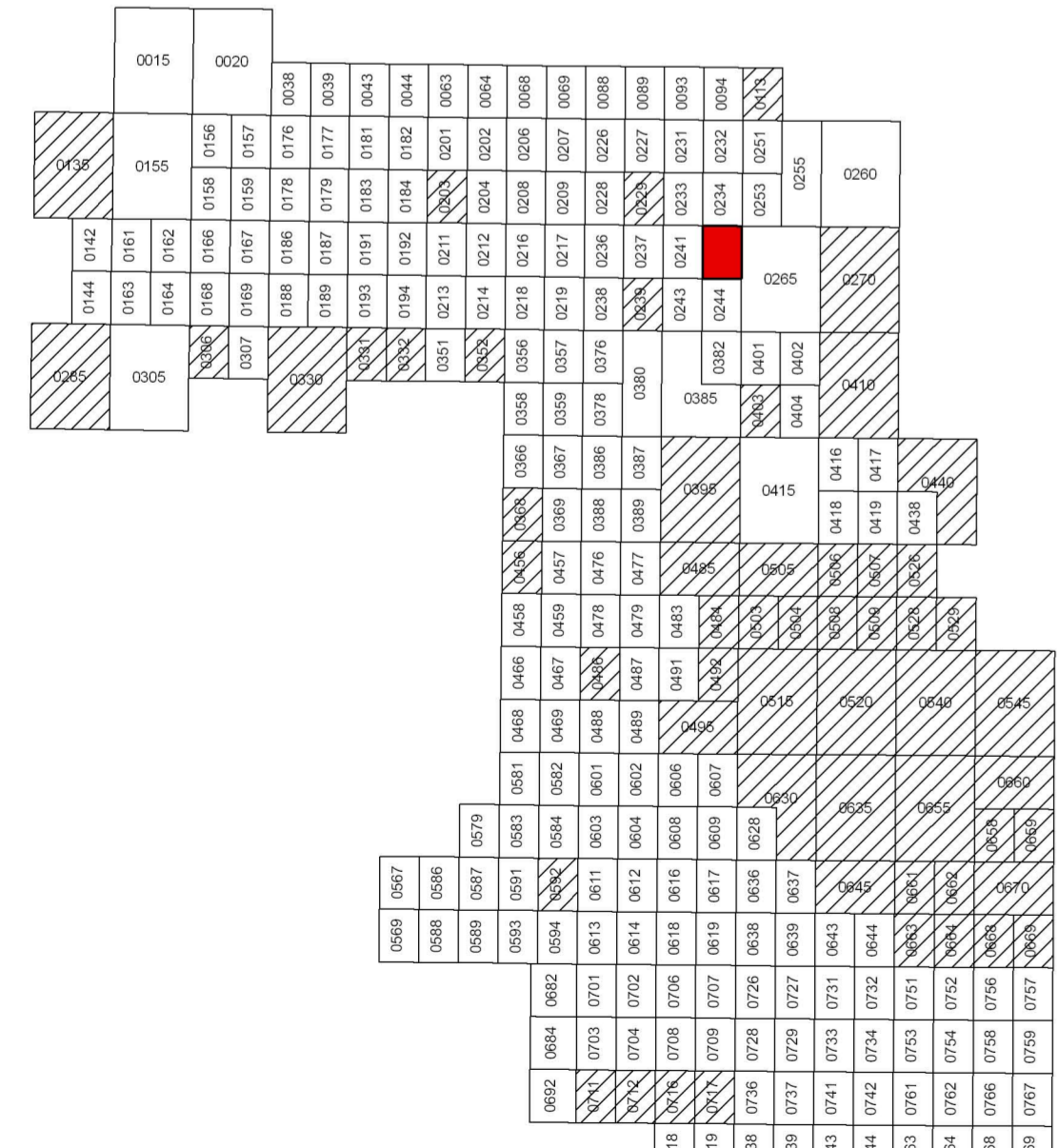


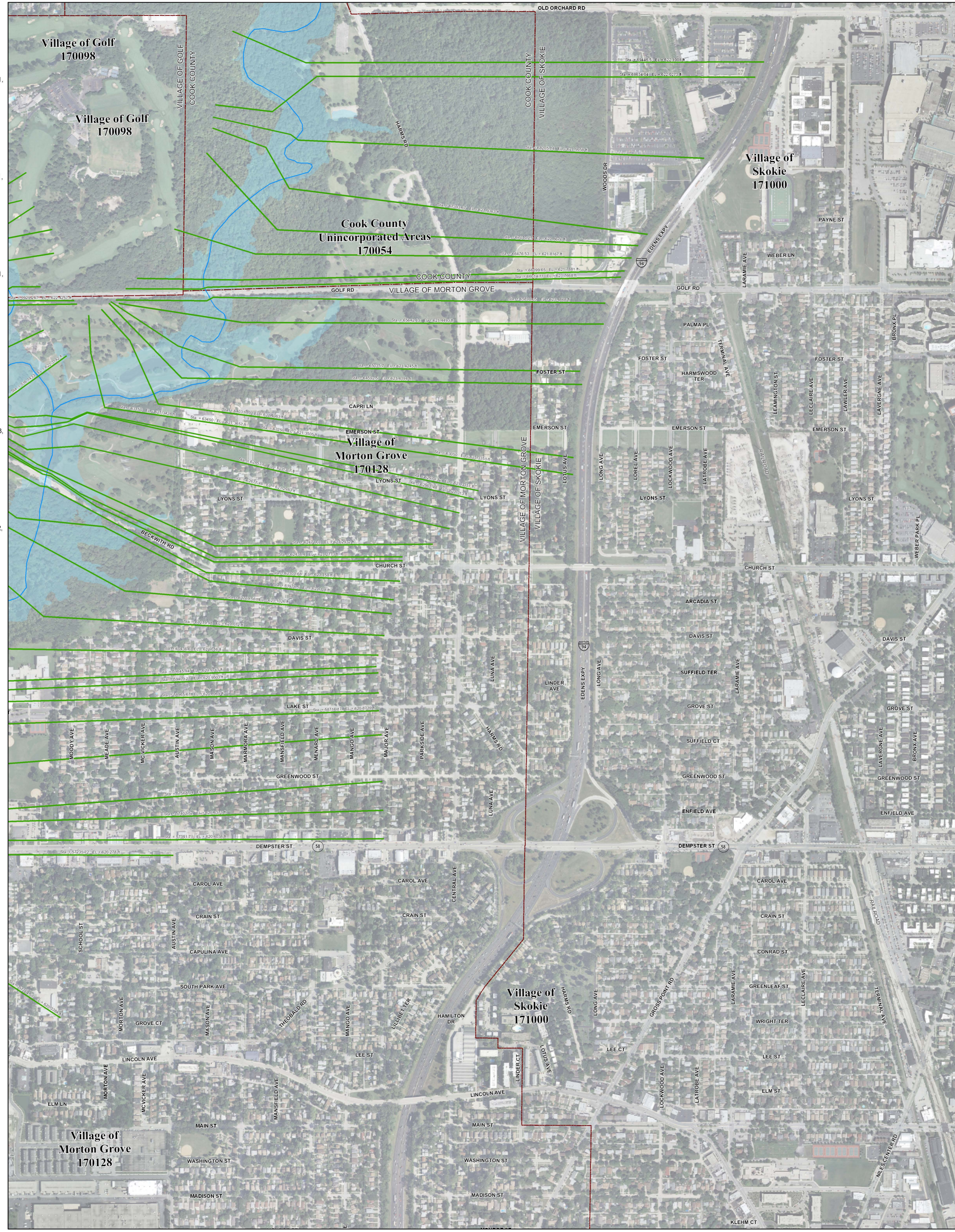
# Municipality Index

Alsip: 0609, 0617, 0628, 0636, 0637, 0638, 0639  
 Arlington Heights: 0044, 0063, 0064, 0162, 0184, 0192, 0201, 0202, 0203, 0204, 0211, 0212  
 Barrington Hills: 0115, 0020, 0155, 0156, 0157  
 Barrington: 0220, 0238  
 Bartlett: 0144, 0163, 0164, 0168, 0285, 0305, 0306  
 Bedford Park: 0487, 0488, 0489, 0495, 0515, 0606  
 Bellwood: 0369, 0388, 0457, 0476  
 Bensenville: 0356  
 Berkeley: 0388, 0369, 0456  
 Berwyn: 0483, 0484, 0485  
 Blue Island: 0637, 0639, 0643, 0644, 0645  
 Bridgeview: 0480, 0485, 0602, 0606, 0609  
 Broadview: 0476, 0477  
 Brookfield: 0478, 0479, 0486, 0487  
 Buffalo Grove: 0663, 0664  
 Burbank: 0495, 0515, 0606, 0607, 0630  
 Burnham: 0664, 0668, 0669  
 Burr Ridge: 0466, 0468, 0469, 0681, 0582  
 Calumet City: 0664, 0668, 0669, 0752, 0754, 0756, 0757, 0758, 0759  
 Calumet Park: 0643, 0644, 0645  
 Chicago Heights: 0742, 0743, 0744, 0763, 0806, 0807, 0826  
 Chicago Ridge: 0606, 0607, 0608, 0609  
 Chicago: 0214, 0218, 0219, 0239, 0243, 0244, 0265, 0270, 0352, 0356, 0357, 0358, 0359, 0376, 0378, 0380, 0382, 0385, 0386, 0387, 0389, 0401, 0402, 0403, 0404, 0410, 0415, 0416, 0417, 0418, 0419, 0438, 0440, 0484, 0485, 0491, 0492, 0495, 0503, 0504, 0505, 0506, 0507, 0508, 0519, 0520, 0526, 0528, 0539, 0540, 0545, 0528, 0630, 0635, 0636, 0637, 0645, 0655, 0658, 0659, 0660, 0661, 0662, 0663, 0664, 0668, 0669, 0670, 0702, 0703, 0704, 0706, 0711  
 Country Club Hills: 0728, 0729, 0736, 0737  
 Countryside: 0467, 0469, 0486, 0488  
 Crestwood: 0617, 0619, 0636, 0638, 0639  
 Deer Park: 0328, 0329, 0343  
 Deerfield: 0069, 0088, 0089  
 Des Plaines: 0208, 0209, 0212, 0214, 0216, 0217, 0218, 0219, 0236, 0238, 0357, 0376  
 Dixmoor: 0643, 0644, 0731  
 Dolton: 0644, 0663, 0664, 0732, 0751, 0752  
 East Dundee: 0155  
 East Hazel Crest: 0733, 0734  
 Elgin: 0135, 0142, 0144, 0155, 0161, 0163, 0305  
 Elk Grove Village: 0193, 0194, 0211, 0213, 0214, 0218, 0331, 0332, 0351, 0352  
 Elmhurst: 0456  
 Elmwood Park: 0380, 0387, 0395  
 Evanston: 0253, 0255, 0260, 0265, 0270  
 Evergreen Park: 0628, 0630, 0635  
 Flossmoor: 0737, 0739, 0741, 0742, 0743, 0744  
 Ford Heights: 0763, 0764, 0768, 0826, 0827  
 Forest Park: 0389, 0395, 0477, 0485  
 Forest View: 0484, 0491, 0492  
 Frankfort: 0781, 0782  
 Franklin Park: 0358, 0359, 0366, 0367, 0378, 0386  
 Glenview: 0093, 0094, 0113, 0231, 0232, 0251  
 Glenview: 0207, 0209, 0226, 0227, 0228, 0229, 0231, 0233, 0234, 0236, 0237, 0241  
 Glenwood: 0742, 0761, 0762, 0763, 0764  
 Golf: 0233, 0234, 0241, 0242  
 Hanover Park: 0168, 0169, 0306, 0307  
 Harvey: 0643, 0644, 0731, 0732, 0734, 0751  
 Hazel Heights: 0380, 0385  
 Hazel Crest: 0729, 0733, 0734, 0737  
 Hickory Hills: 0601, 0602, 0603, 0604, 0606, 0608  
 Hillside: 0368, 0369, 0456, 0457  
 Hinsdale: 0458, 0466, 0467, 0468, 0469  
 Hodgkins: 0469, 0469, 0467, 0469, 0502, 0601  
 Hoffman Estates: 0155, 0157, 0158, 0159, 0161, 0162, 0166, 0167, 0176, 0178, 0179, 0186, 0187, 0188, 0189, 0191  
 Homewood: 0630  
 Homewood: 0728, 0733, 0734, 0737, 0741, 0742  
 Indian Head Park: 0468, 0469  
 Inverness: 0020, 0038, 0039, 0157, 0176, 0177, 0178, 0179  
 Justice: 0488, 0489, 0601, 0602  
 Kennilworth: 0253, 0255  
 La Grange Park: 0459, 0476  
 La Grange: 0459, 0467

# Panel Index



Not available. Contact MWRD for further information



# NOTES TO USER:

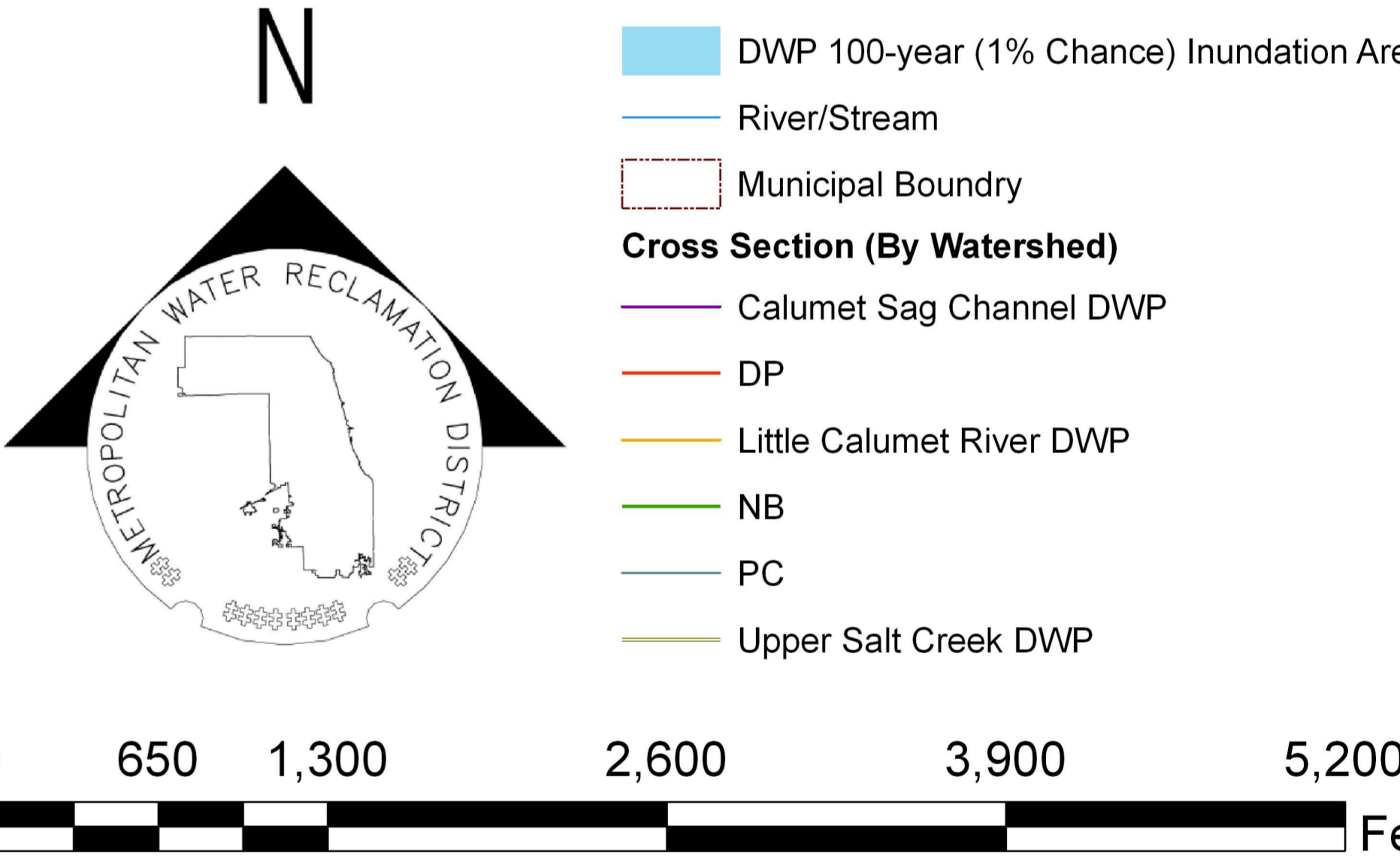
The inundation areas and water surface elevations shown on this map were developed as part of the Metropolitan Water Reclamation District of Greater Chicago's (MWRD) Stormwater Management Program. Specific details regarding the development of the new models used to generate the maps are described in MWRD's Detailed Watershed Plans, which are available for download at [www.mwrд.org](http://www.mwrд.org). To access, click on "Services & Facilities" in the top navigation bar, click on "Stormwater Management", and then click on "Stormwater Annual Reports and Publications" on the left navigation bar of the Stormwater Management webpage.

This map does not delineate floodways. The information contained on this map is in addition to and does not substitute for the relevant Federal Emergency Management Agency's (FEMA) Flood Insurance Study (FIS) and associated Flood Insurance Rate Map (FIRM).

Elevations stated on this map are consistent with the North American Vertical Datum (NAVD) 1988. Flood elevations must be compared to ground structures referenced to the same datum. Hydraulic profiles of modeled waterways are available for download at [www.mwrд.org](http://www.mwrд.org). To access, click on "Services & Facilities" in the top navigation bar, click on "Stormwater Management", and then click on "Inundation Maps & Profiles" on the left navigation bar of the Stormwater Management webpage.

The corporate limits shown on this map are based on the best information available at the time of study.

If you have questions on this map, please contact the MWRD's Engineering Department-Stormwater Management Section, at 312-751-5600, or via e-mail [Stormwater@mwrд.org](mailto:Stormwater@mwrд.org).



**Metropolitan Water Reclamation District of Greater Chicago**

# Cook County Inundation Map

## Panel 0242

The area depicted in this map corresponds to FEMA's DFIRM Panel: 17031C0242J