

Figure 2.2.1
Calumet-Sag Channel Watershed Problem Locations

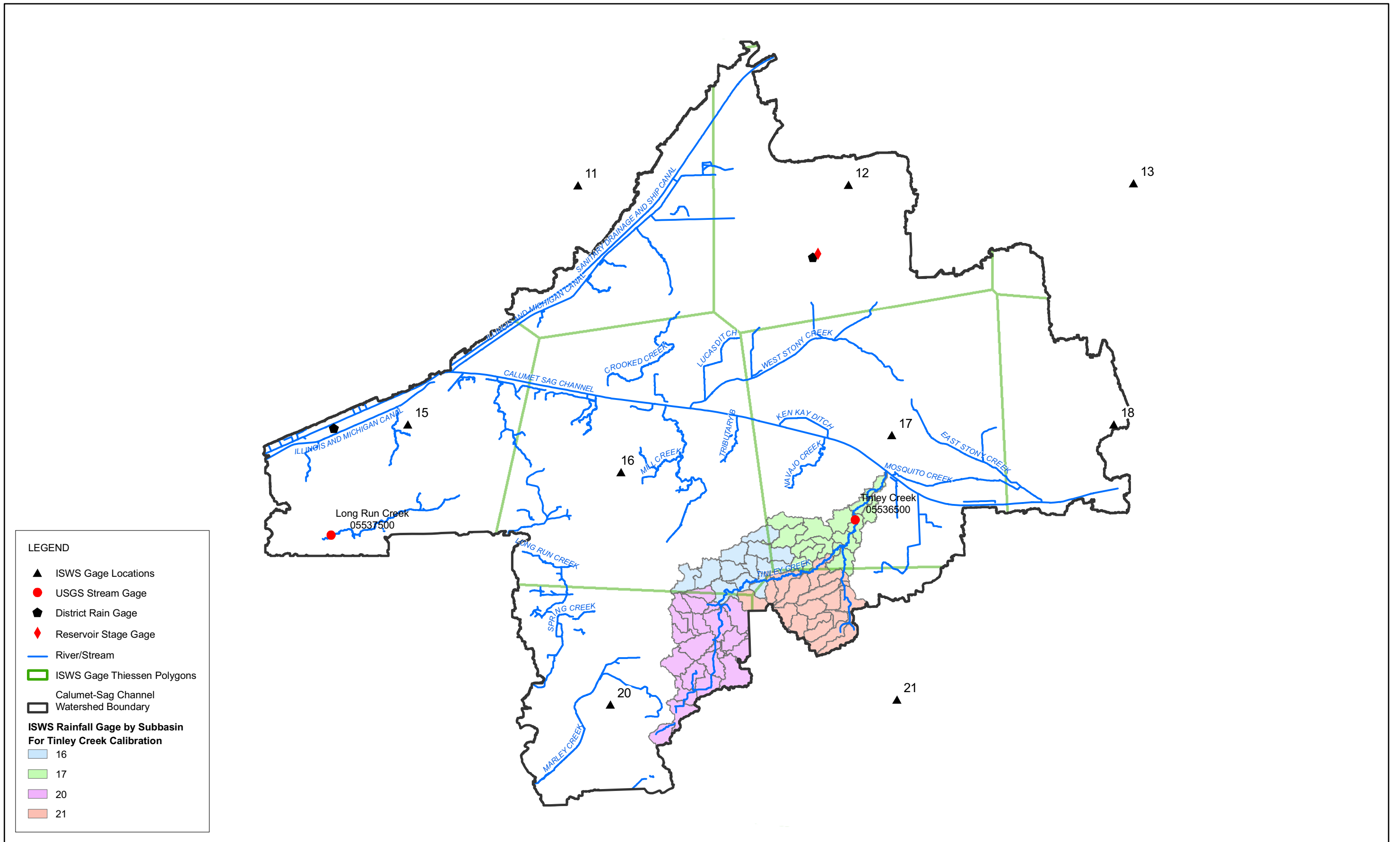
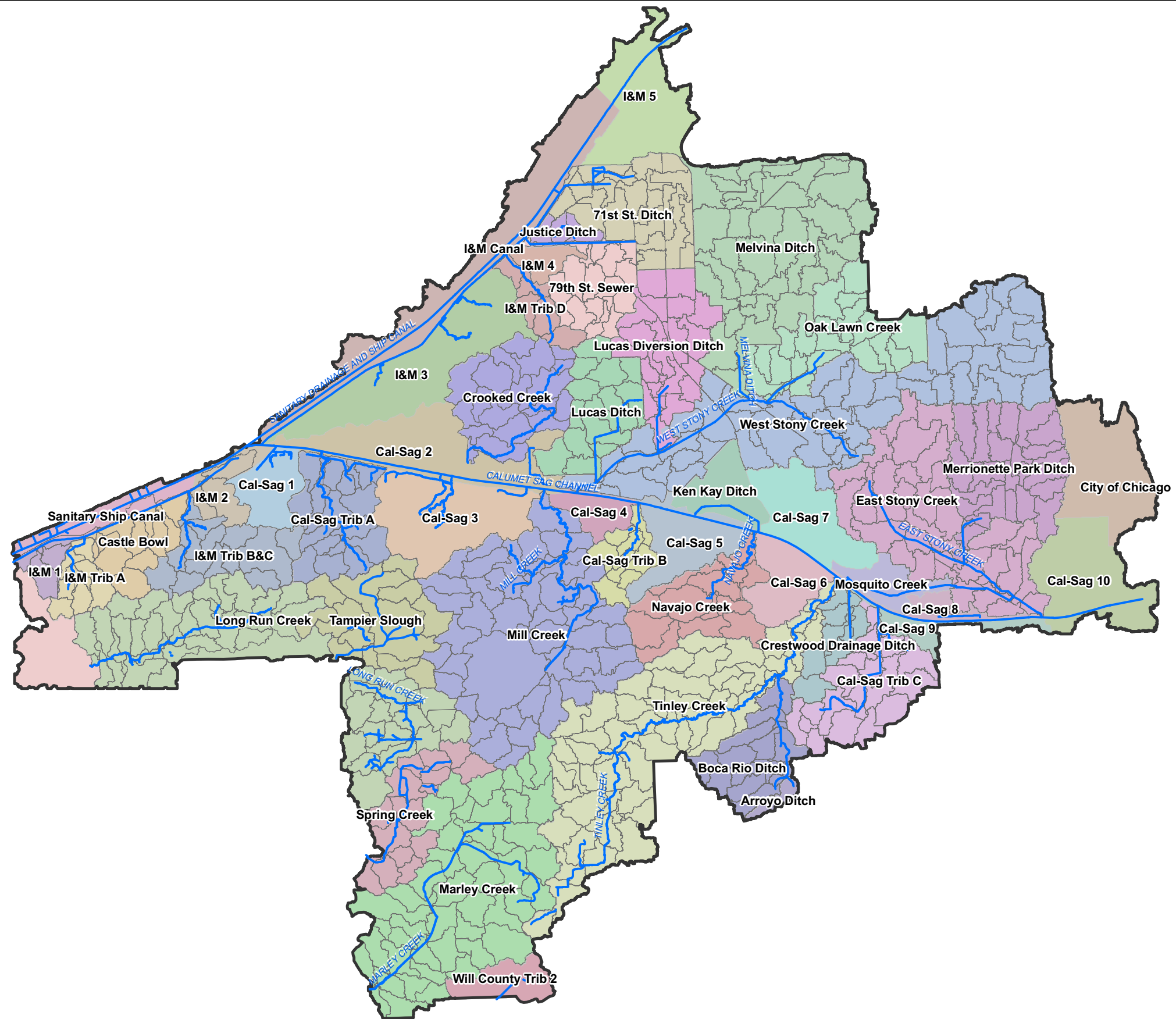


Figure 2.3.1
Calumet-Sag Channel Watershed Monitoring Locations



LEGEND

- River/Stream
- Calumet-Sag Channel
- Watershed Boundary
- Subbasin

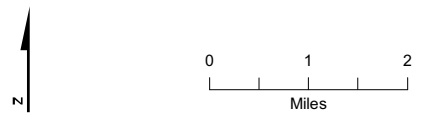


Figure 2.3.2
Calumet-Sag Channel Subwatersheds

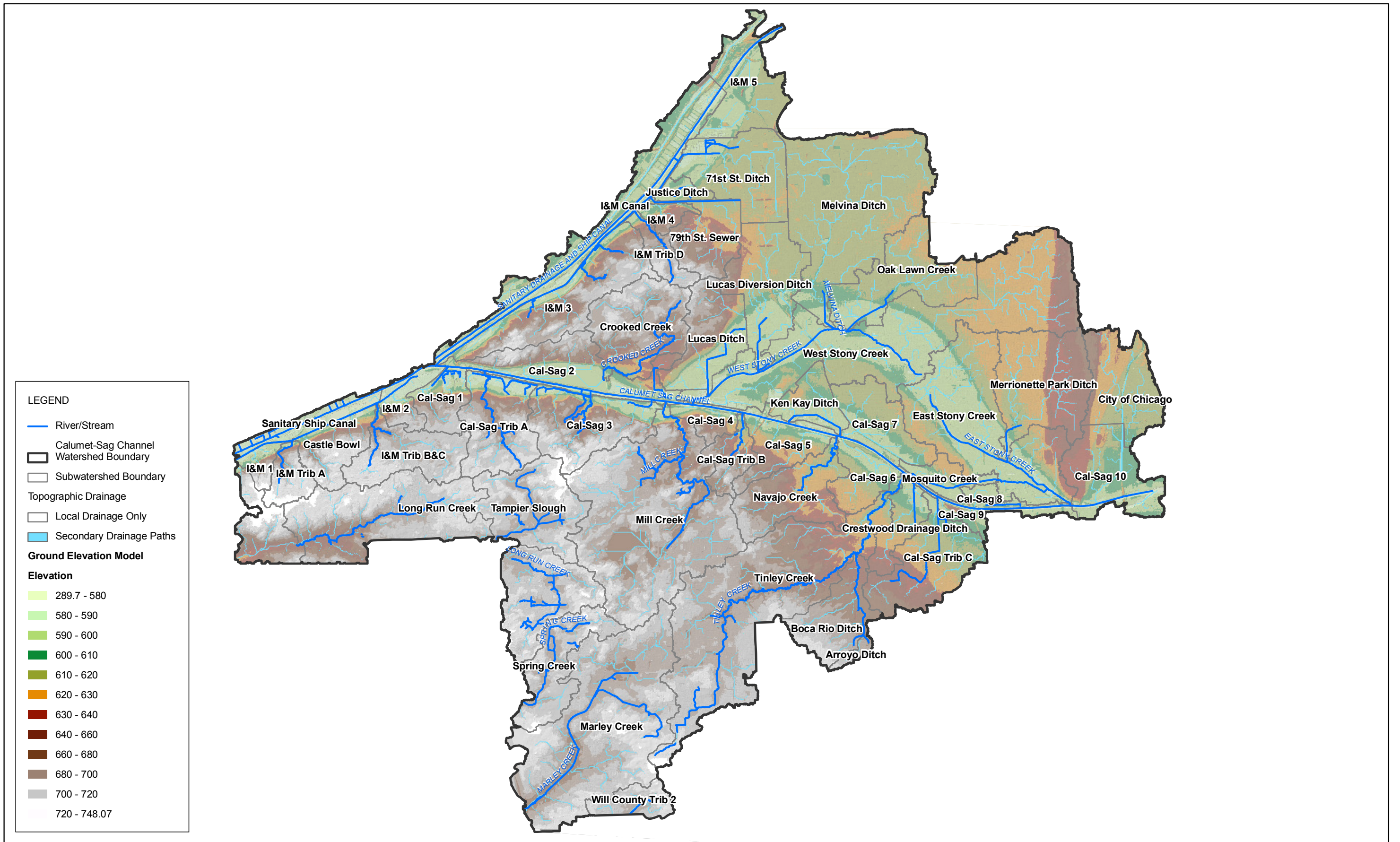


Figure 2.3.3
Calumet-Sag Channel Watershed Topography and Drainage Network

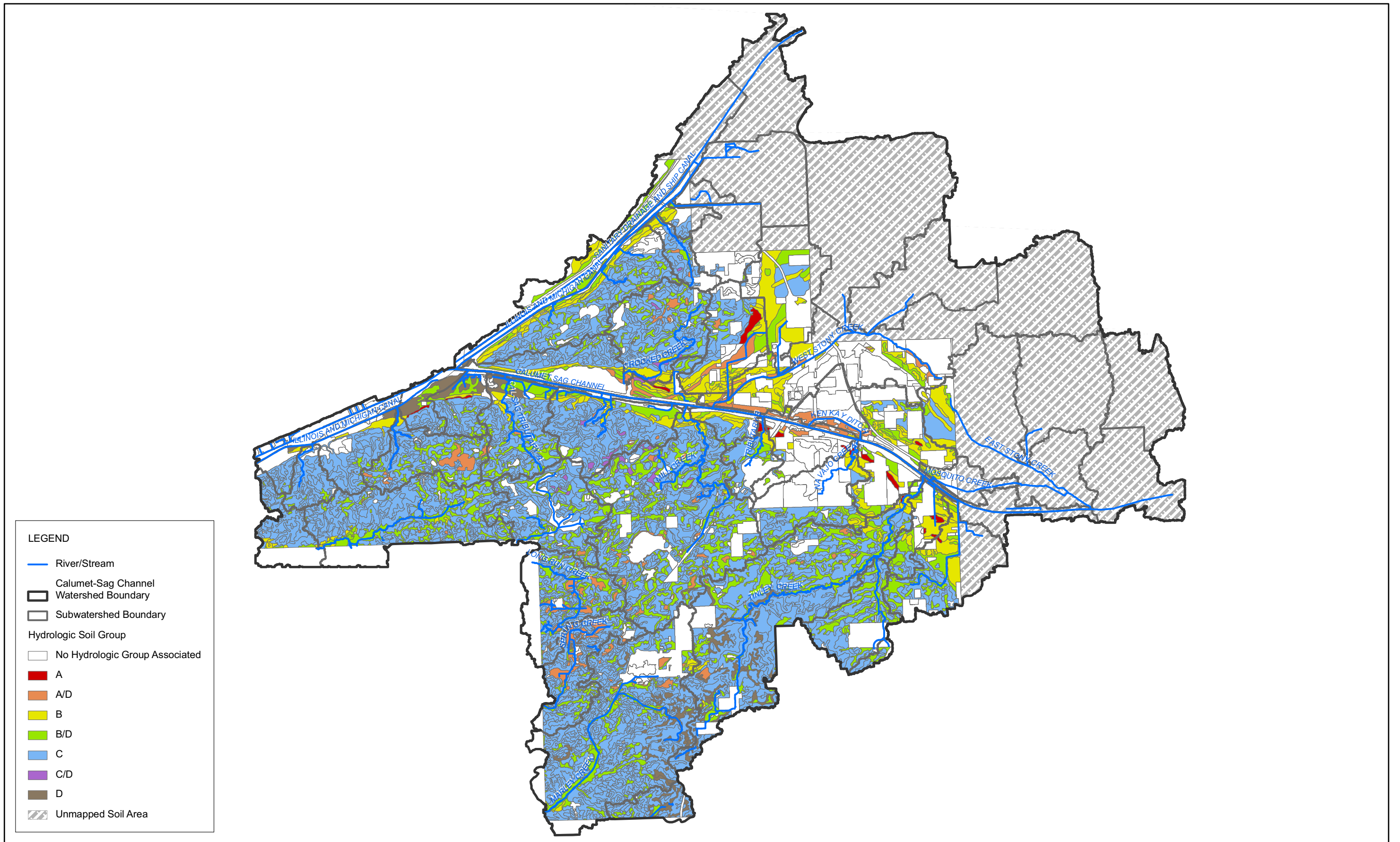


Figure 2.3.4
Calumet-Sag Channel Watershed Hydrologic Soil Groups

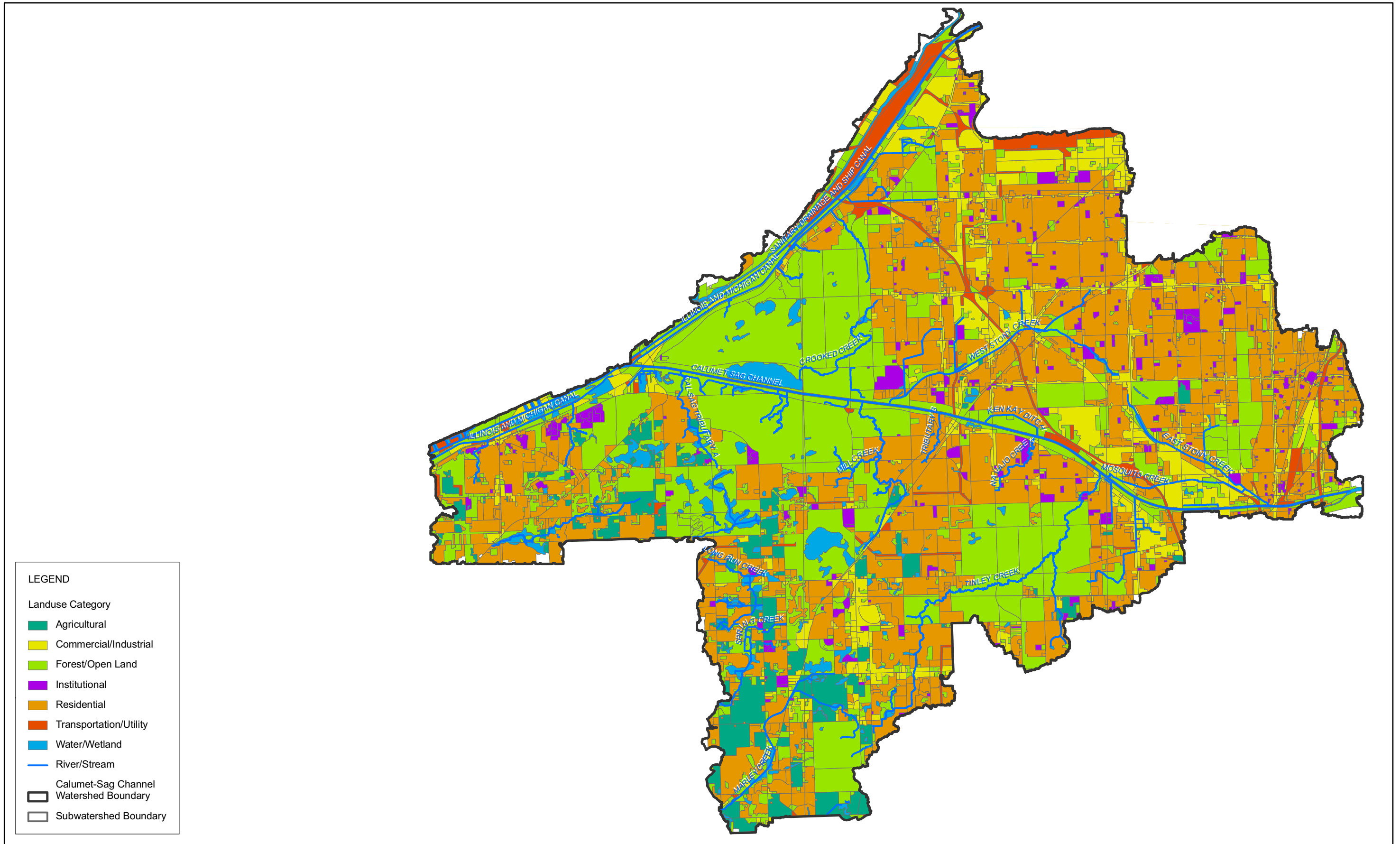
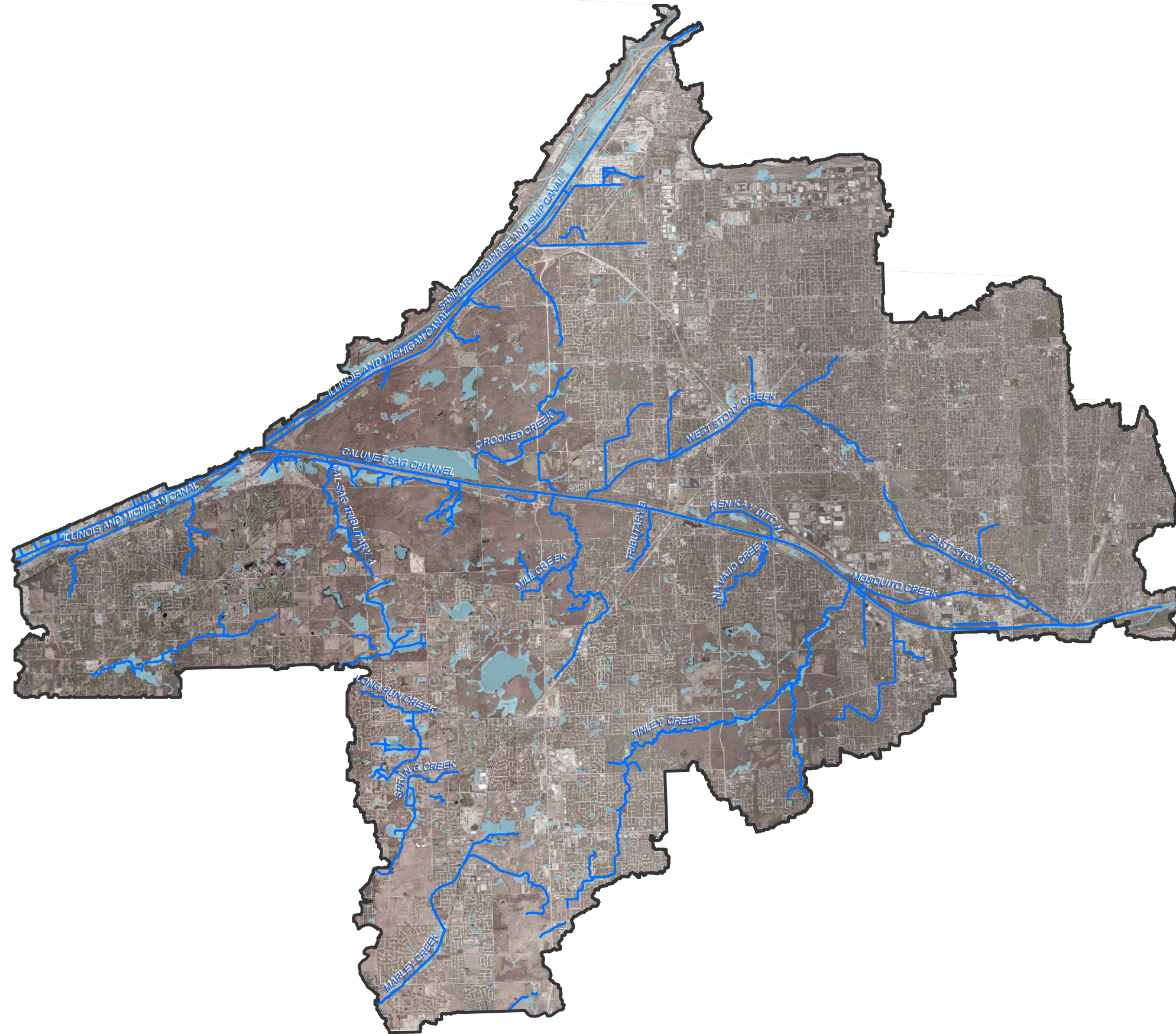


Figure 2.3.5
Calumet-Sag Channel Watershed Land Use

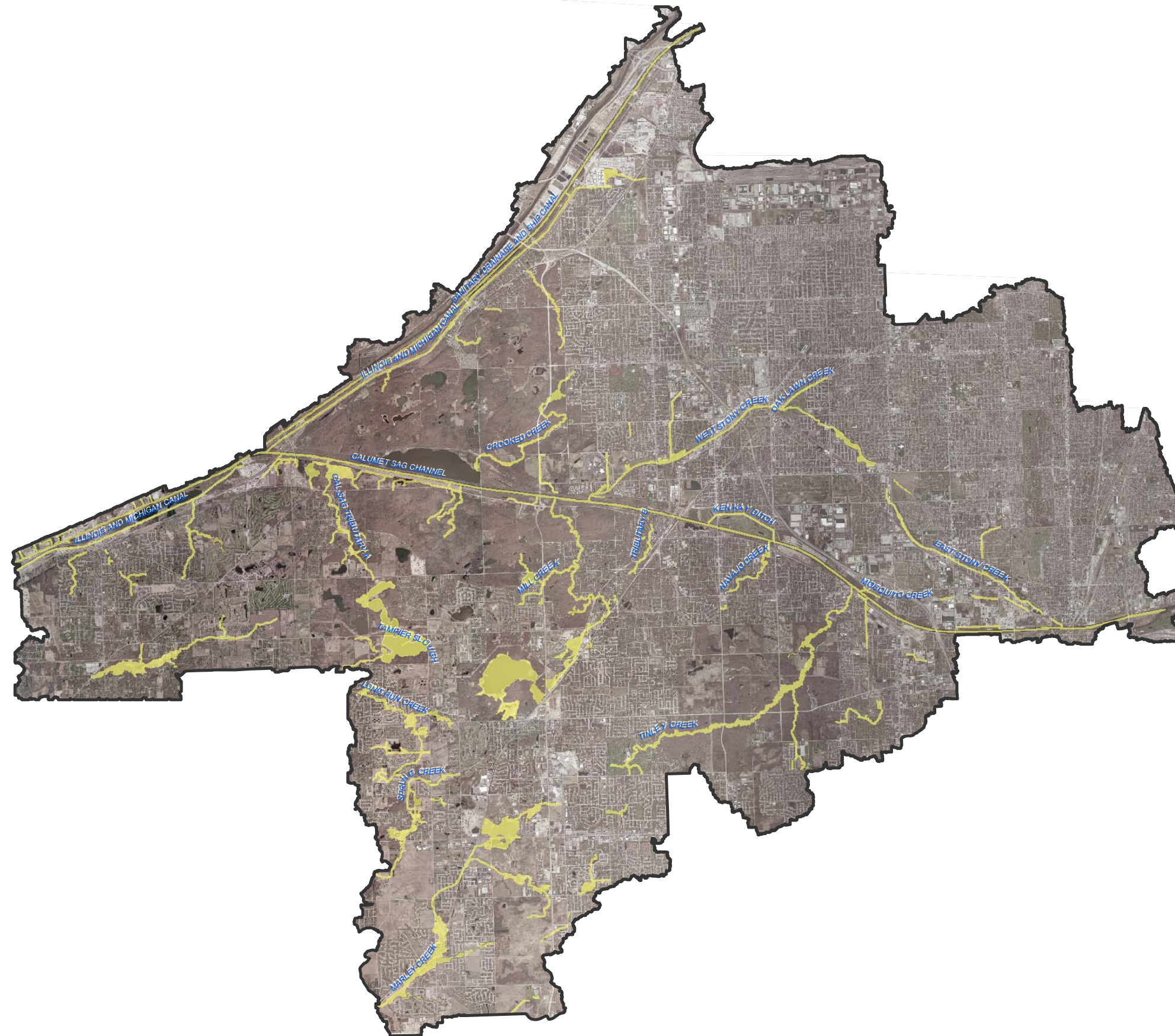


LEGEND

■ NWI Wetlands (1987)



Figure 2.3.6
Calumet-Sag Channel Watershed National Wetland Inventory



LEGEND
 Riparian Areas

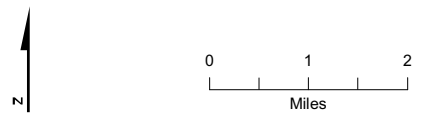


Figure 2.3.7
 Calumet-Sag Channel Watershed Riparian Areas

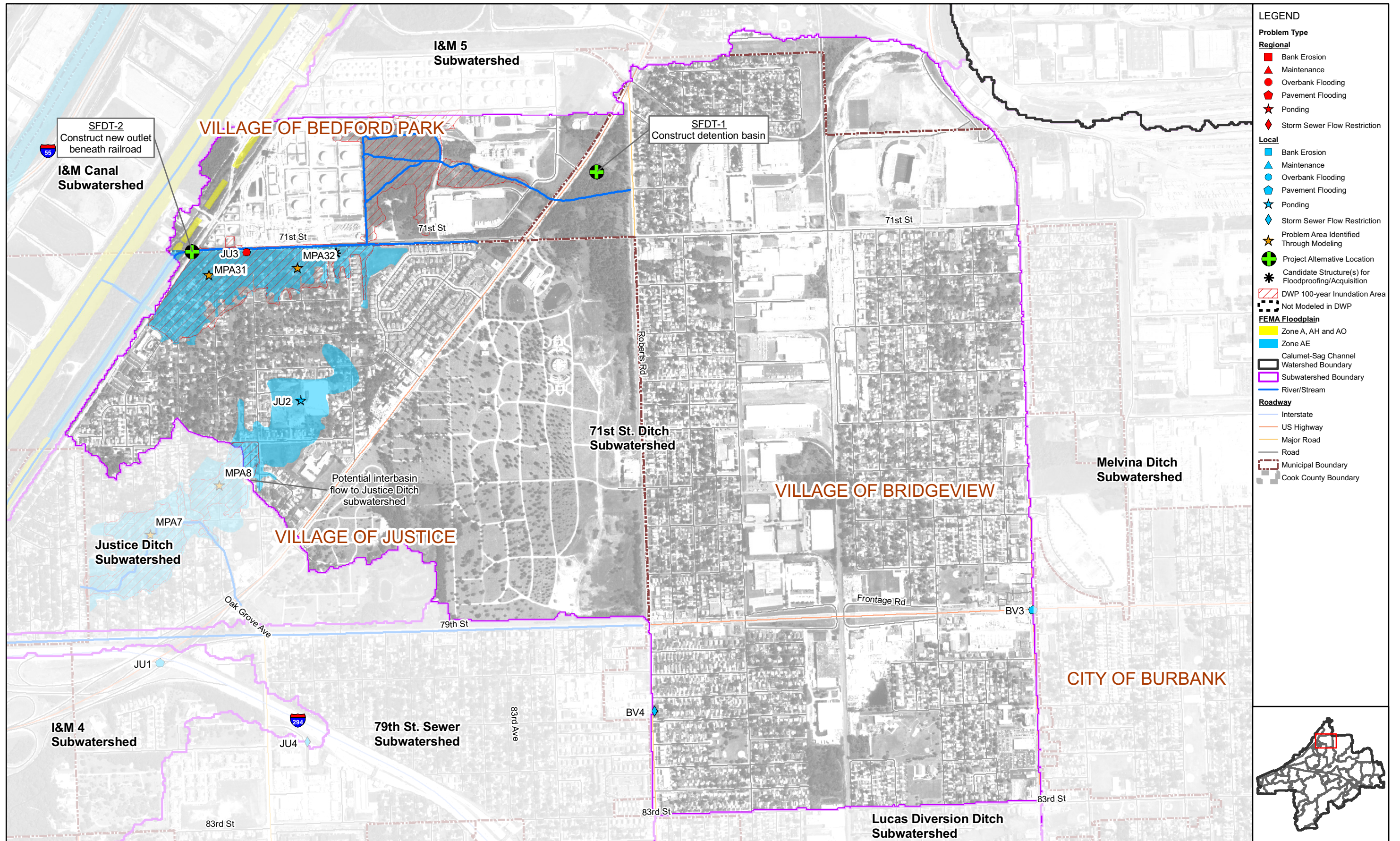
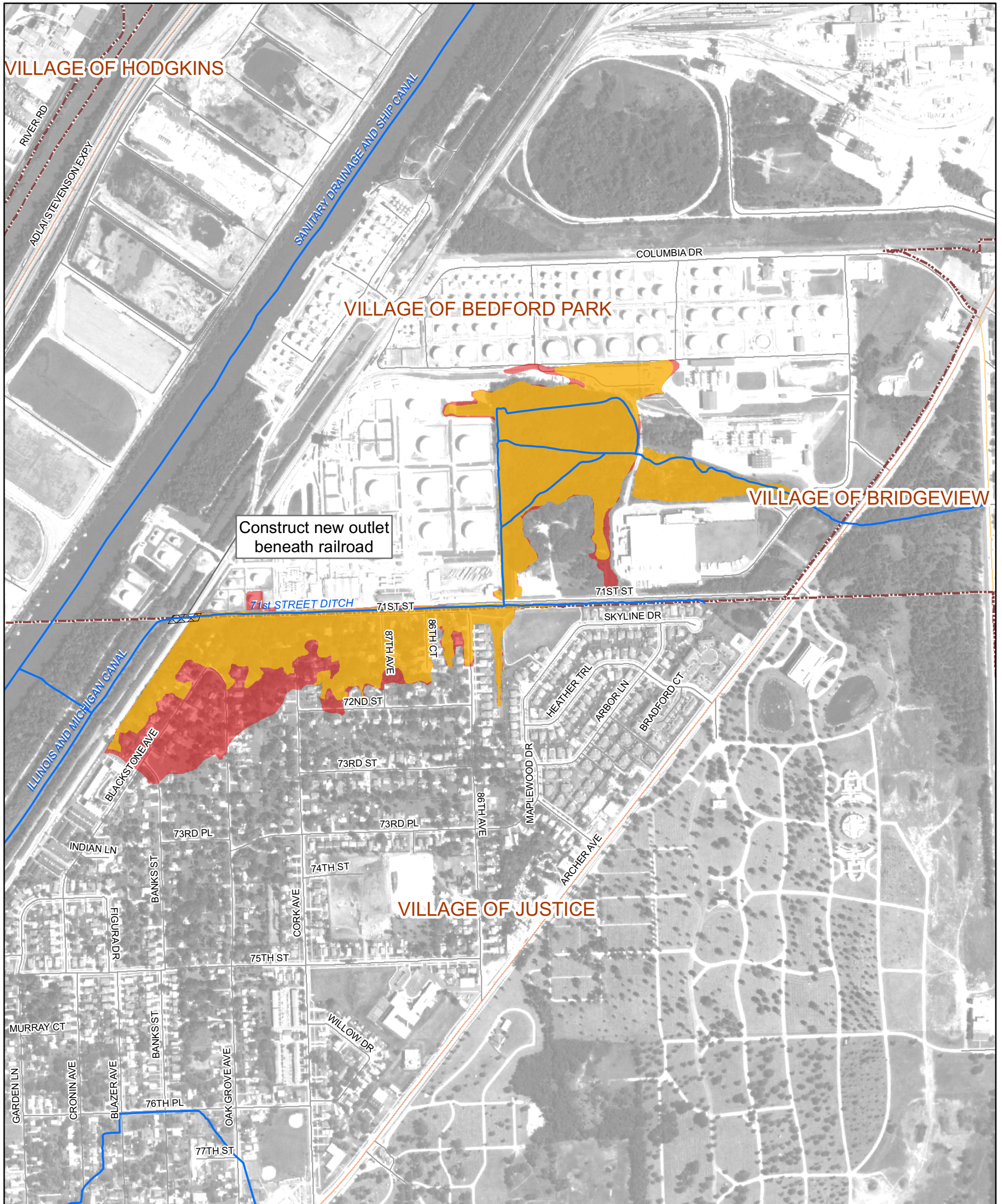


Figure 3.1.1
 Tributary Overview: 71st St. Ditch
 Calumet-Sag Channel Detailed Watershed Plan



Subwatershed: Seventy-First Street Ditch
 Alternative Description:

Alternative: SFDT-2

Increase conveyance capacity of culvert beneath railroad tracks to I&M Canal

Conceptual Level Cost: \$ 716,700

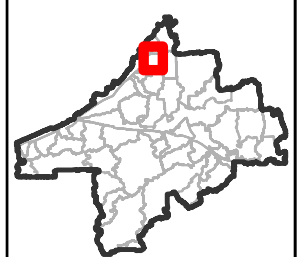
Benefits: \$ 31,400

B/C Ratio: 0.04

LEGEND

- Project Alternative Location
 - 100-year Inundation Area With Project
 - 100-year Inundation Area Without Project
 - Calumet-Sag Channel
 - Watershed Boundary
- | | | |
|----------------|------------|----------------------|
| Roadway | Interstate | Municipal Boundary |
| | US Highway | Cook County Boundary |
| | Major Road | |
| | Road | |
- 0 270 540
Feet

Figure 3.1.3
 Seventy-First Street Ditch
 Alternative SFDT-2
 Existing and Alternative Inundation Areas
 Calumet-Sag Channel Detailed Watershed Plan



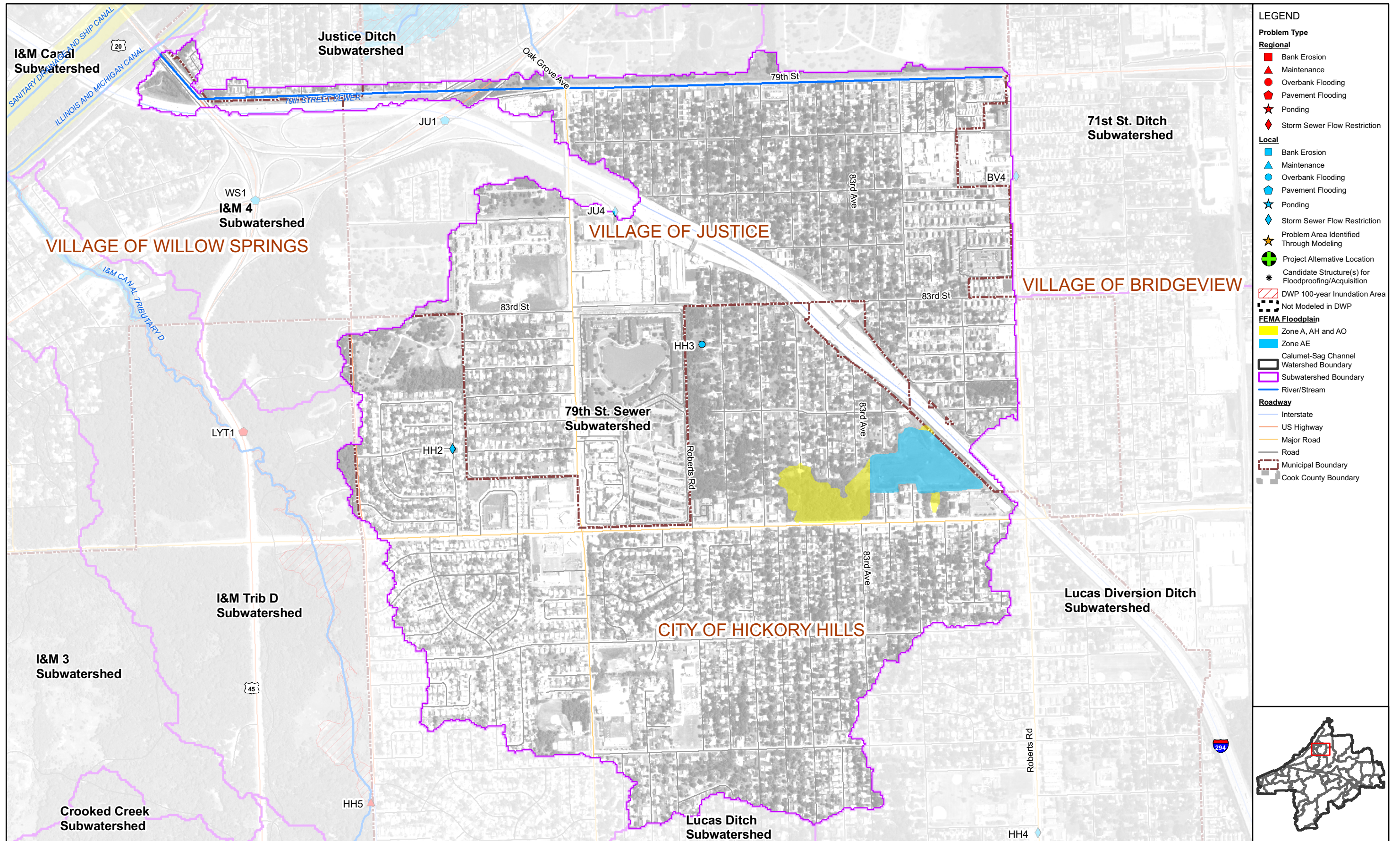


Figure 3.2.1
 Tributary Overview: 79th St. Sewer
 Calumet-Sag Channel Detailed Watershed Plan

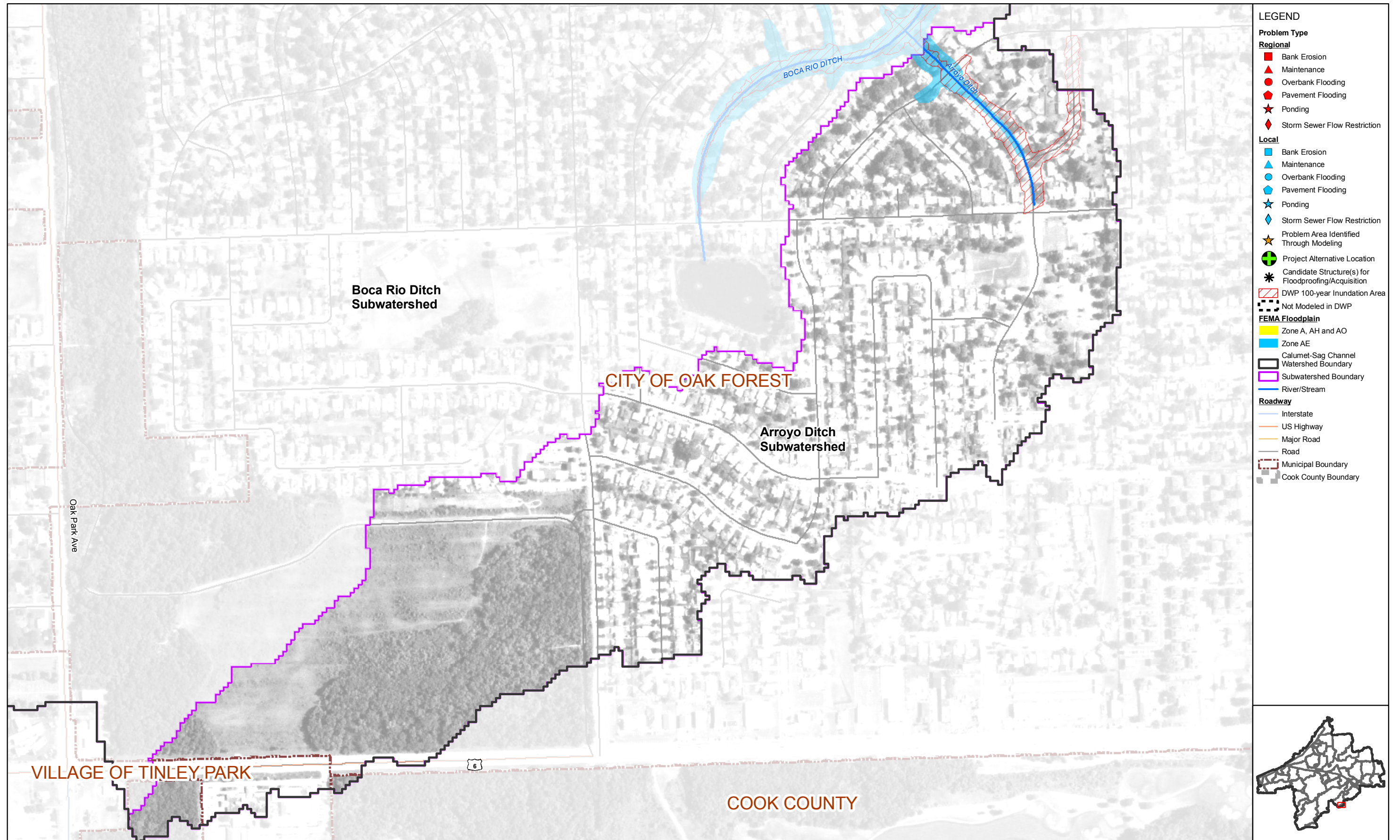


Figure 3.3.1
Tributary Overview: Arroyo Ditch
Calumet-Sag Channel Detailed Watershed Plan