

Subwatershed: Stony Creek

Alternative: STCR-7

Alternative Description:

Increase California Ave culvert conveyance capacity

Conceptual Level Cost: \$ 3,428,900

Benefits: \$ 364,200

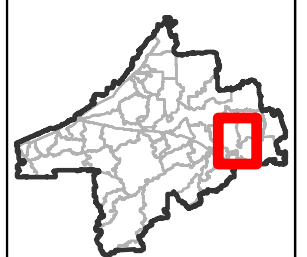
B/C Ratio: 0.11

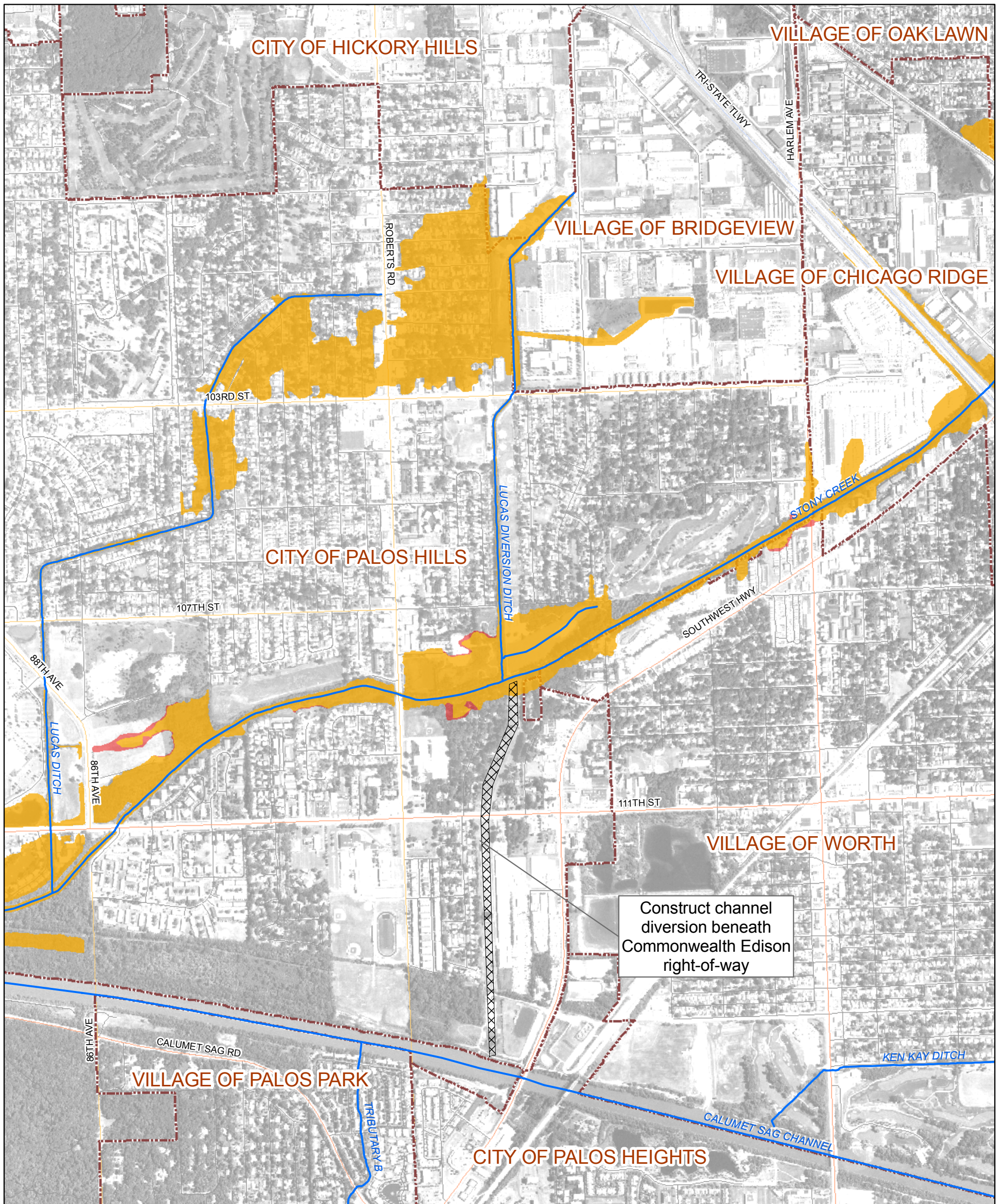
LEGEND

- ☒ Project Alternative Location
 - 🟡 100-year Inundation Area With Project
 - 🔴 100-year Inundation Area Without Project
 - 🟦 Calumet-Sag Channel
 - 🟩 Watershed Boundary
- | | |
|--|--|
| <p>Roadway</p> <ul style="list-style-type: none"> 🛣 Interstate 🛡 US Highway 🛣 Major Road 🛣 Road | <ul style="list-style-type: none"> 🌊 River/Stream 🔲 Municipal Boundary 🔲 Cook County Boundary |
|--|--|
- 0 800 1,600

Feet

Figure 3.28.5
 Stony Creek
 Alternative STCR-7
 Existing and Alternative Inundation Areas
 Calumet-Sag Channel Detailed Watershed Plan





Subwatershed: Stony Creek

Alternative: STCR-8

Alternative Description:

Construct channel diversion beneath Commonwealth Edison right-of-way

Conceptual Level Cost: \$ 6,286,400

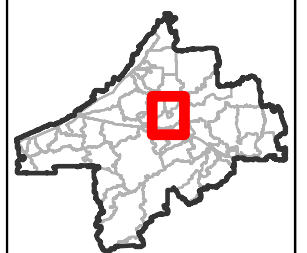
Benefits: \$ 1,146,600

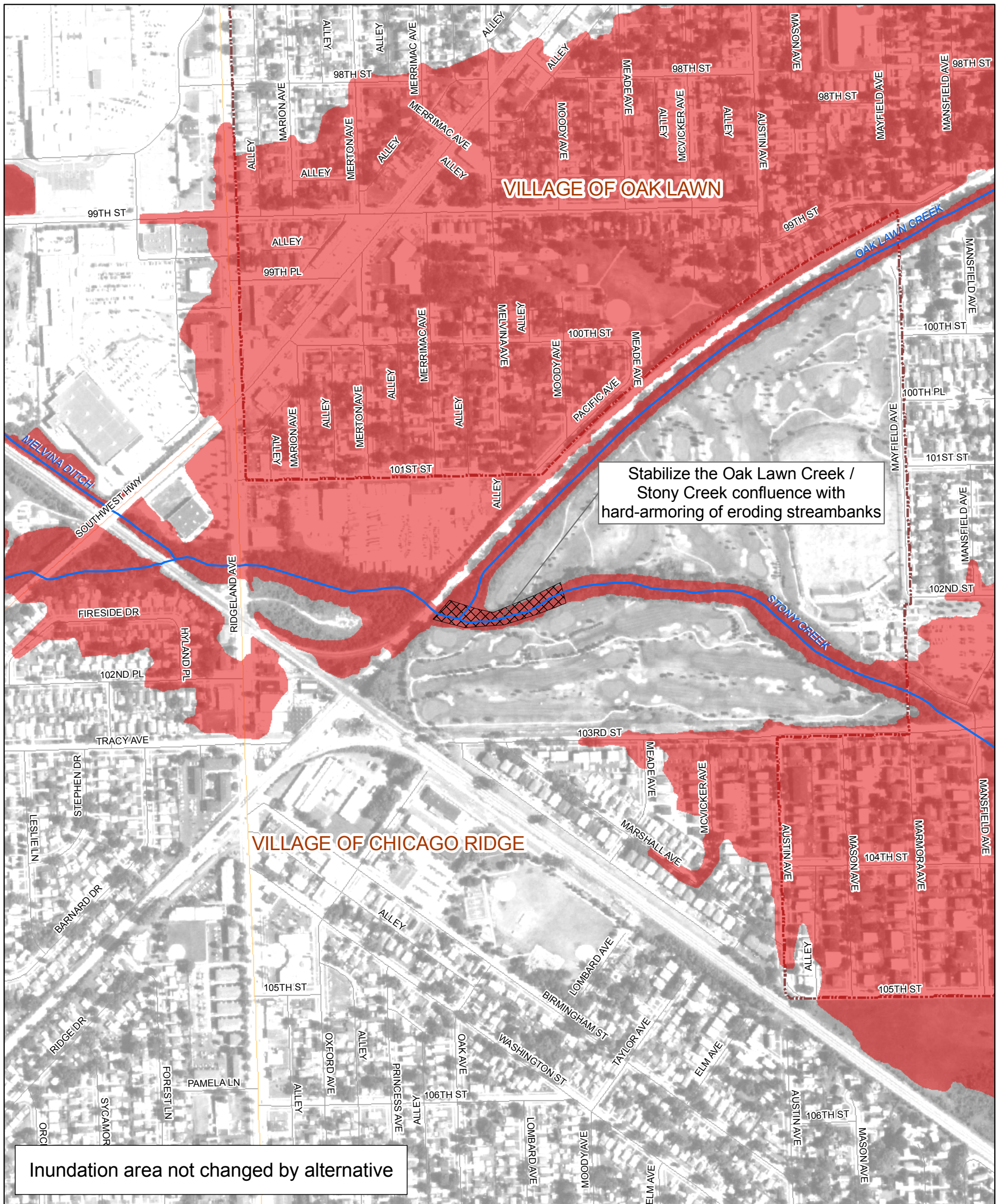
B/C Ratio: 0.18

LEGEND

- Project Alternative Location
 - 100-year Inundation Area With Project
 - 100-year Inundation Area Without Project
 - Calumet-Sag Channel
 - Watershed Boundary
- | | |
|--|---|
| <p>Roadway</p> <ul style="list-style-type: none"> Interstate US Highway Major Road Road | <ul style="list-style-type: none"> River/Stream Municipal Boundary Cook County Boundary |
|--|---|
- 0 660 1,320
Feet

Figure 3.28.6
Stony Creek
Alternative STCR-8
Existing and Alternative Inundation Areas
Calumet-Sag Channel Detailed Watershed Plan





Subwatershed: Stony Creek/Oak Lawn Creek

Alternative: STCR-10

Alternative Description:

Stabilize the Oak Lawn Creek / Stony Creek confluence with hard-armoring of eroding streambanks

Conceptual Level Cost: \$ 2,754,800

Benefits: \$ 0

B/C Ratio: 0

LEGEND

- Project Alternative Location
- 100-year Inundation Area With Project
- 100-year Inundation Area Without Project
- Calumet-Sag Channel
- Watershed Boundary
- Roadway**
 - Interstate
 - US Highway
 - Major Road
 - Road
- River/Stream
- Municipal Boundary
- Cook County Boundary

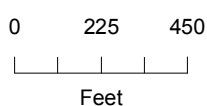
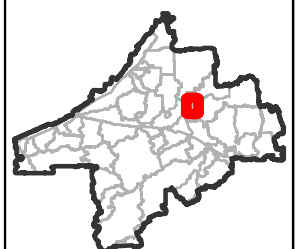


Figure 3.28.7
 Stony Creek/Oak Lawn Creek
 Alternative STCR-10
 Existing and Alternative Inundation Areas
 Calumet-Sag Channel Detailed Watershed Plan



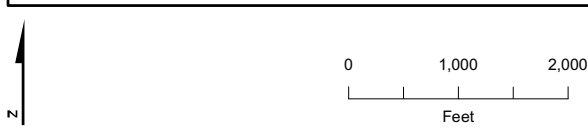
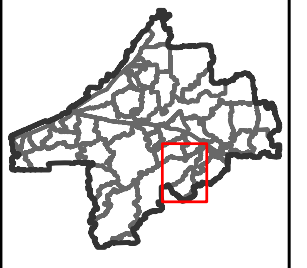
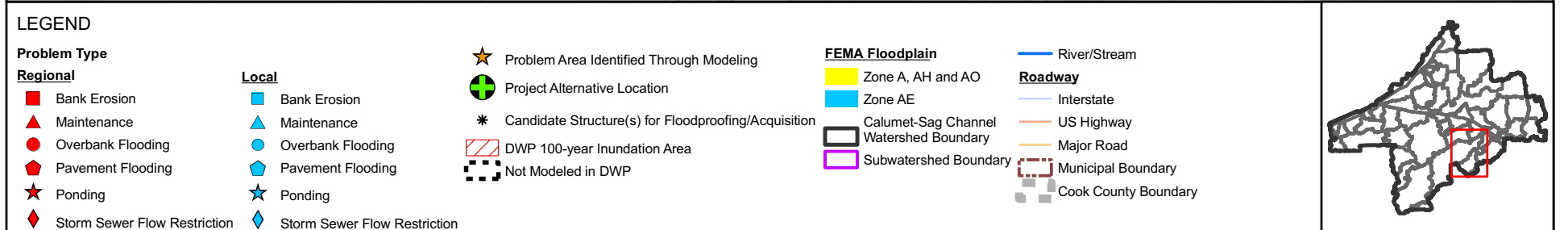
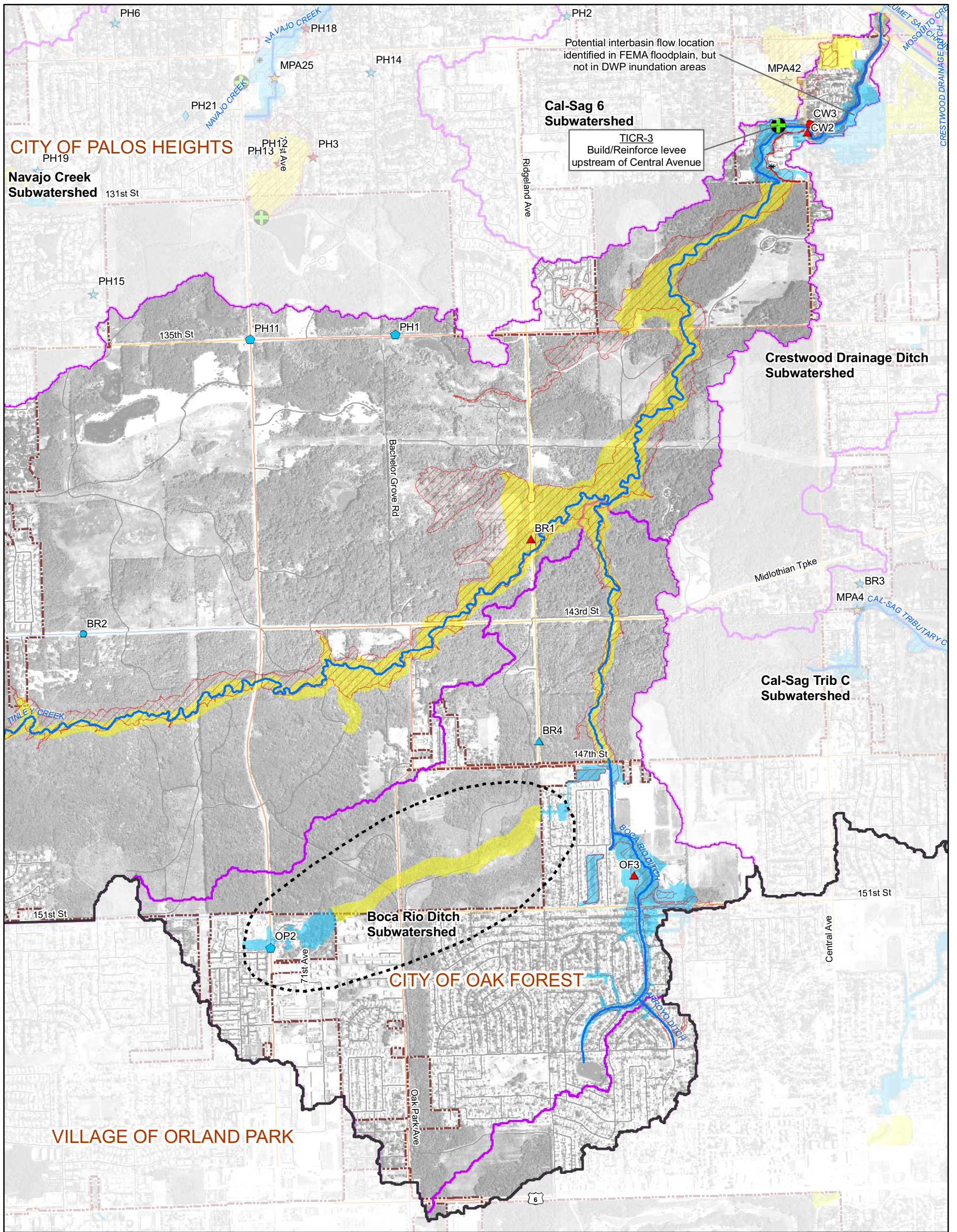
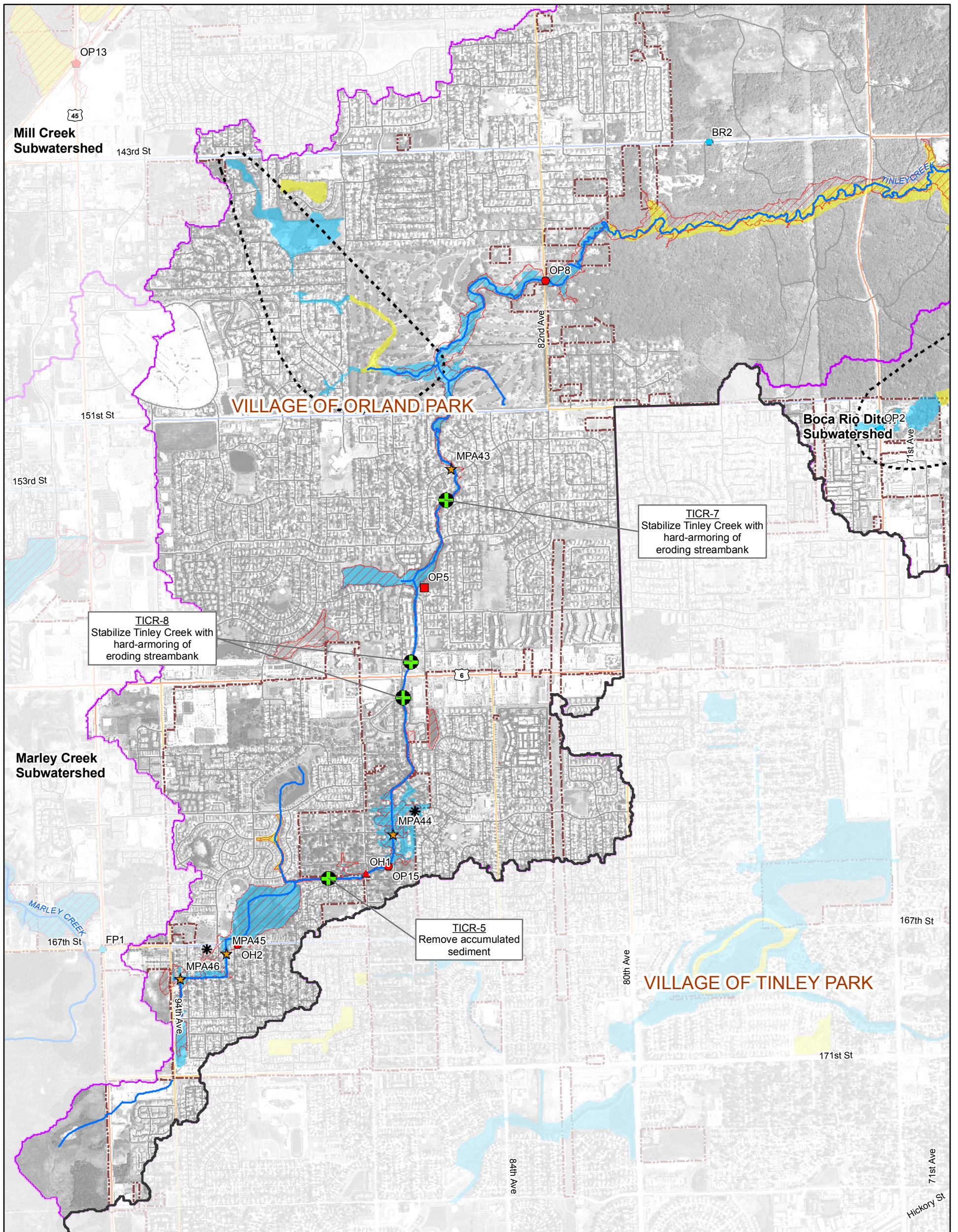


Figure 3.29.1a
Tributary Overview: Tinley Creek (1 of 2)
Calumet-Sag Channel Detailed Watershed Plan



TICR-8
Stabilize Tinley Creek with
hard-armoring of
eroding streambank

TICR-7
Stabilize Tinley Creek with
hard-armoring of
eroding streambank

TICR-5
Remove accumulated
sediment

LEGEND

Problem Type

Regional

- Bank Erosion
- ▲ Maintenance
- Overbank Flooding
- ◆ Pavement Flooding
- ★ Ponding
- ◇ Storm Sewer Flow Restriction

Local

- Bank Erosion
- ▲ Maintenance
- Overbank Flooding
- ◆ Pavement Flooding
- ★ Ponding
- ◇ Storm Sewer Flow Restriction

- ★ Problem Area Identified Through Modeling
- ⊕ Project Alternative Location
- * Candidate Structure(s) for Floodproofing/Acquisition
- ▨ DWP 100-year Inundation Area
- ⋯ Not Modeled in DWP

FEMA Floodplain

- Zone A, AH and AO
- Zone AE
- ▭ Calumet-Sag Channel
- ▭ Watershed Boundary
- ▭ Subwatershed Boundary

River/Stream

- River/Stream
- Roadway
- Interstate
- US Highway
- Major Road
- Municipal Boundary
- Cook County Boundary

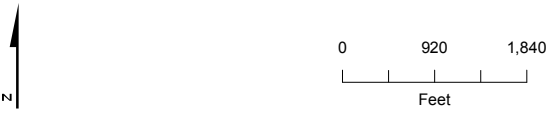
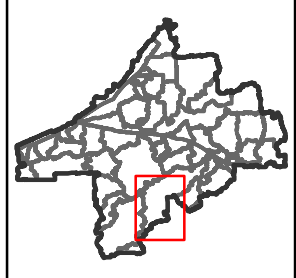
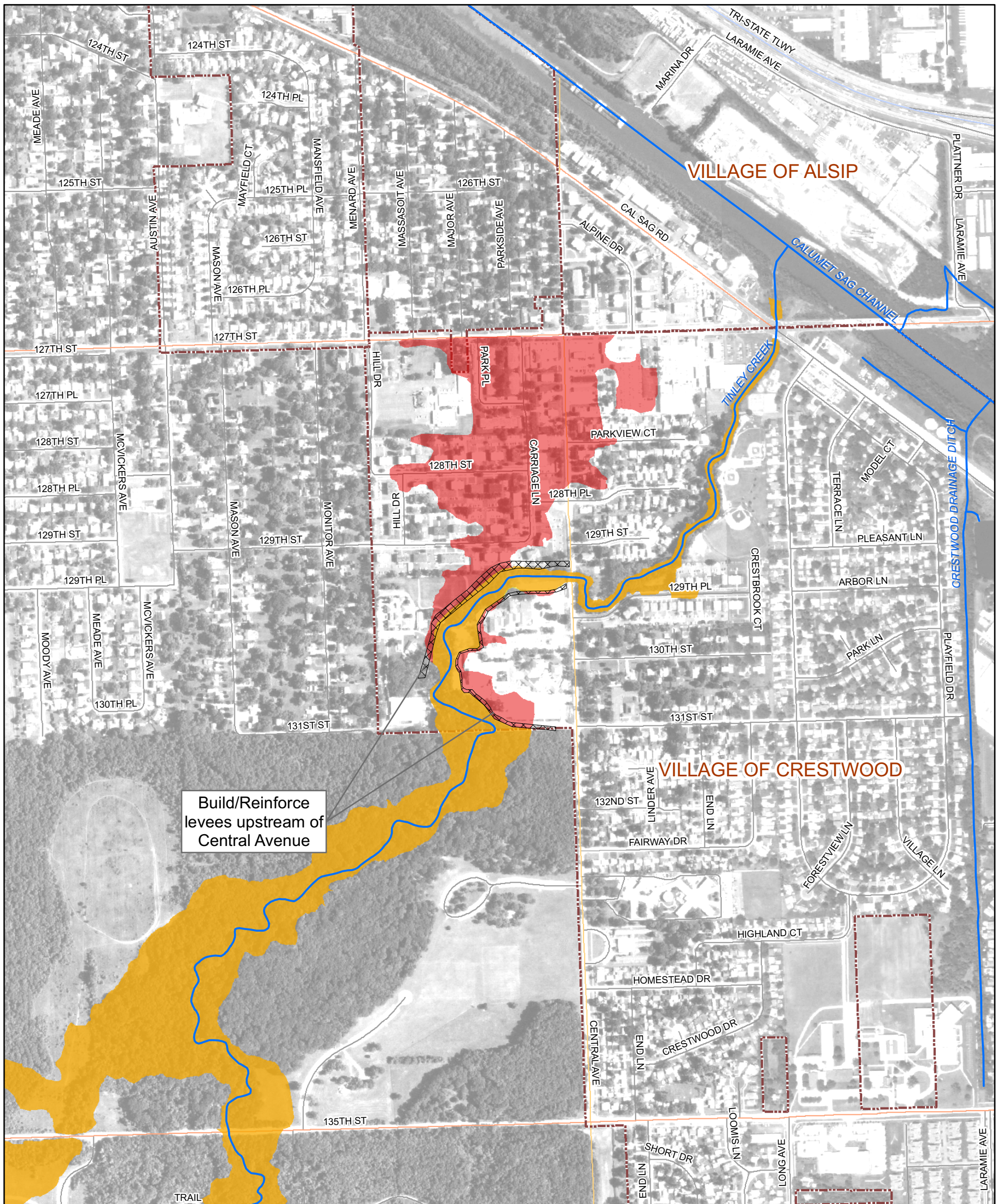


Figure 3.29.1b
Tributary Overview: Tinley Creek (2 of 2)
Calumet-Sag Channel Detailed Watershed Plan



Build/Reinforce levees upstream of Central Avenue

Subwatershed: Tinley Creek

Alternative: TICR-3

Alternative Description:

Levee along north bank of Tinley Creek approaching Central Avenue

Conceptual Level Cost: \$ 2,764,400

Benefits: \$ 1,982,000

B/C Ratio:0.72

LEGEND

- Project Alternative Location
- 100-year Inundation Area With Project
- 100-year Inundation Area Without Project
- Calumet-Sag Channel
- Watershed Boundary
- Roadway**
 - Interstate
 - US Highway
 - Major Road
 - Road
- River/Stream
- Municipal Boundary
- Cook County Boundary

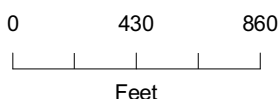
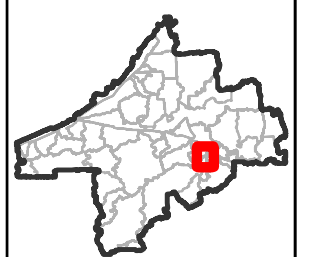
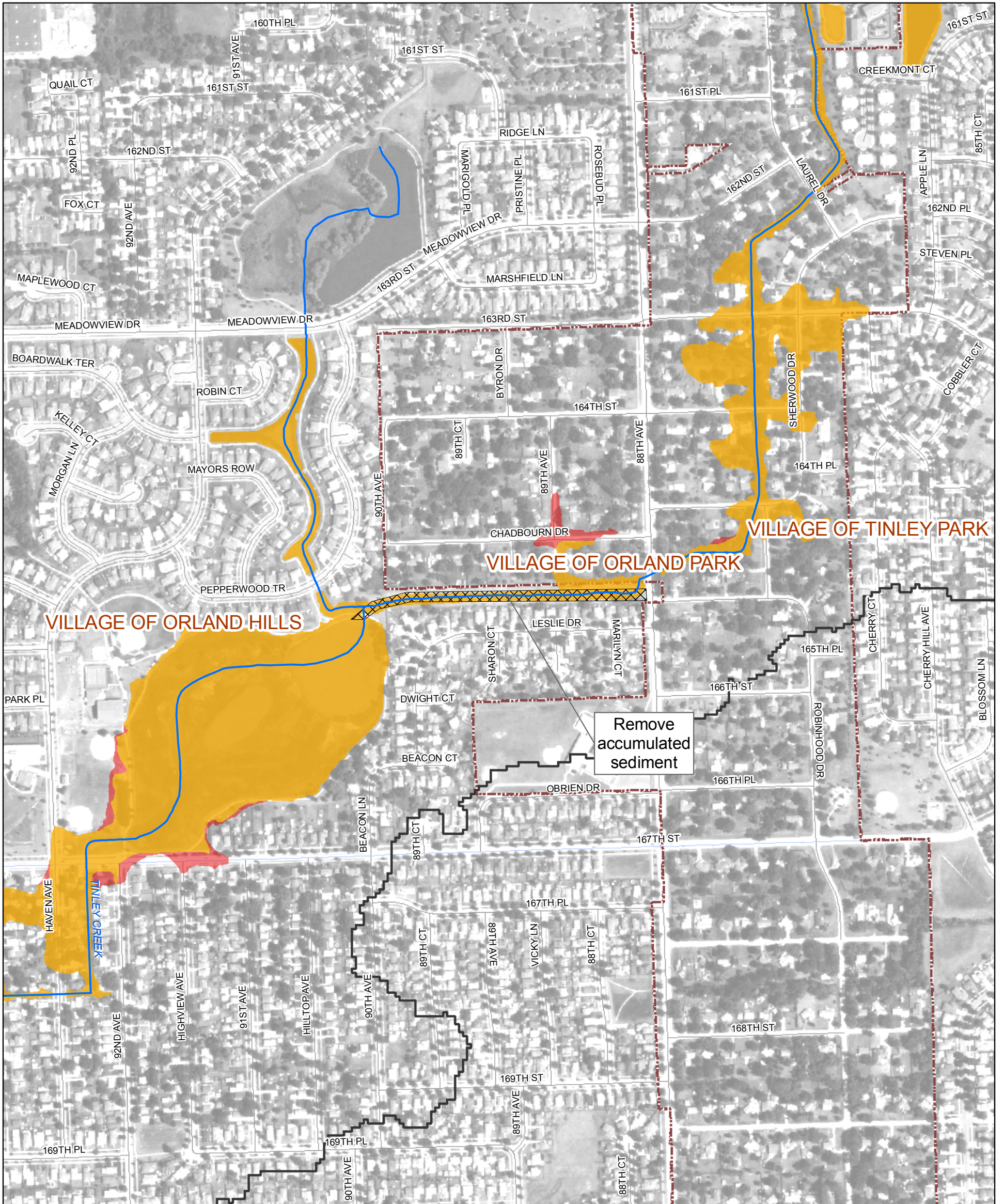


Figure 3.29.4
Tinley Creek
Alternative TICR-3
Existing and Alternative Inundation Areas
Calumet-Sag Channel Detailed Watershed Plan





Subwatershed: Tinley Creek

Alternative: TICR-5

Alternative Description:

Improve / dredge Tinley Creek between 88th Avenue and Lake Lorin

Conceptual Level Cost: \$ 112,800

Benefits: \$ 142,600

B/C Ratio: 1.26

LEGEND

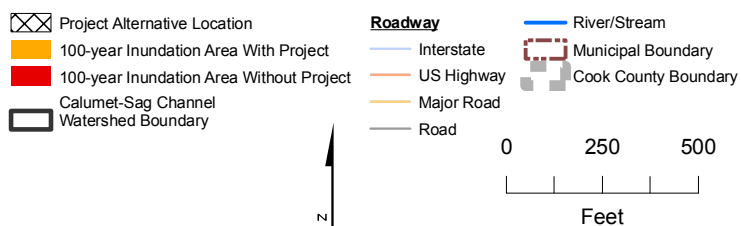
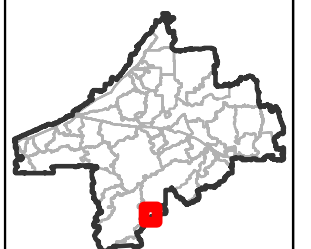
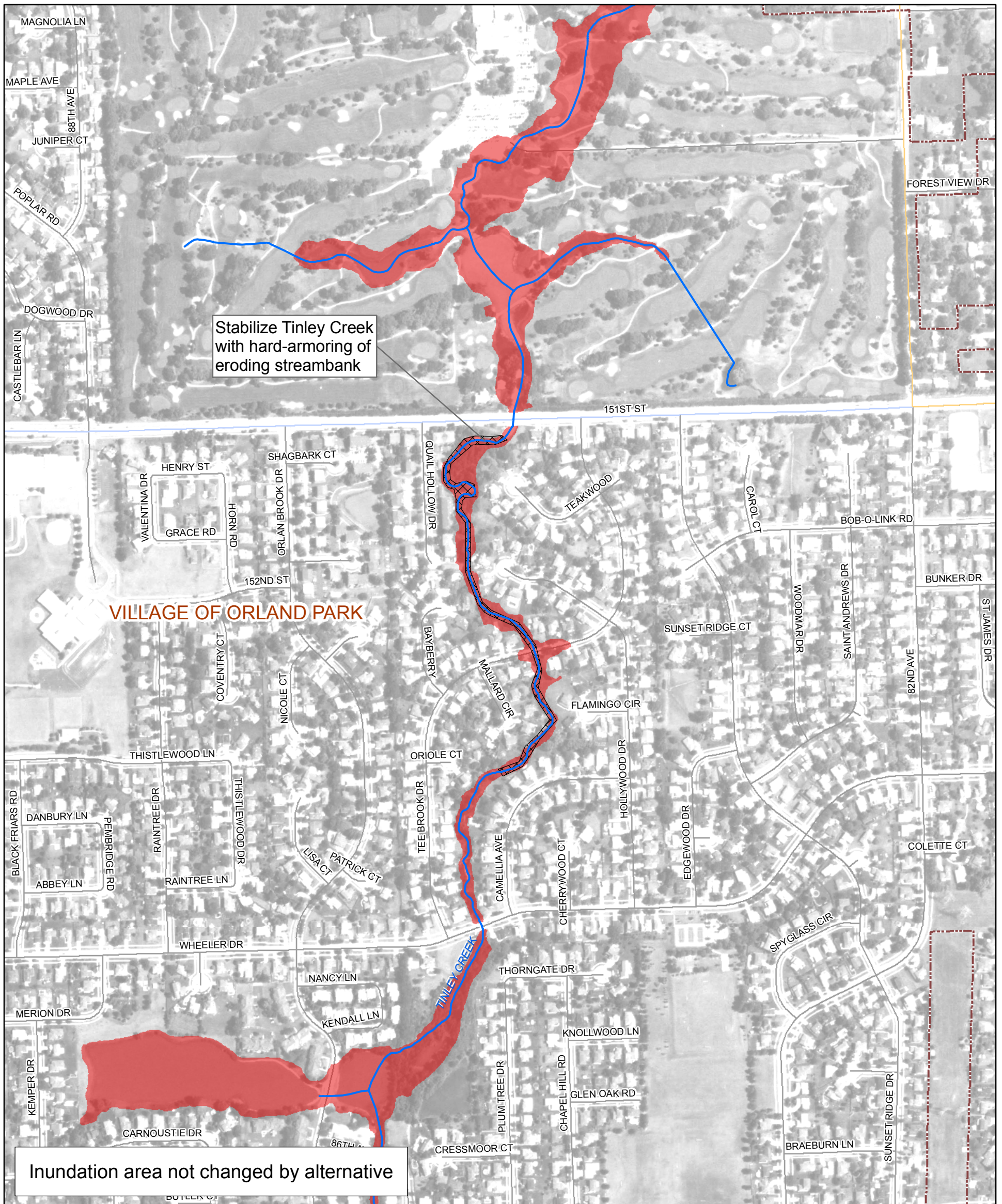


Figure 3.29.5
Tinley Creek
Alternative TICR-5
Existing and Alternative Inundation Areas
Calumet-Sag Channel Detailed Watershed Plan





Subwatershed: Tinley Creek

Alternative: TICR-7

Alternative Description:

Stabilize Tinley Creek to prevent erosion

Conceptual Level Cost: \$ 1,479,736

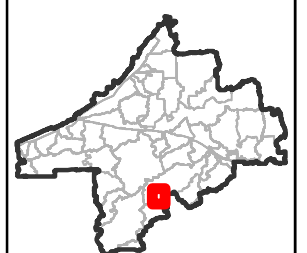
Benefits: \$ 1,524,702

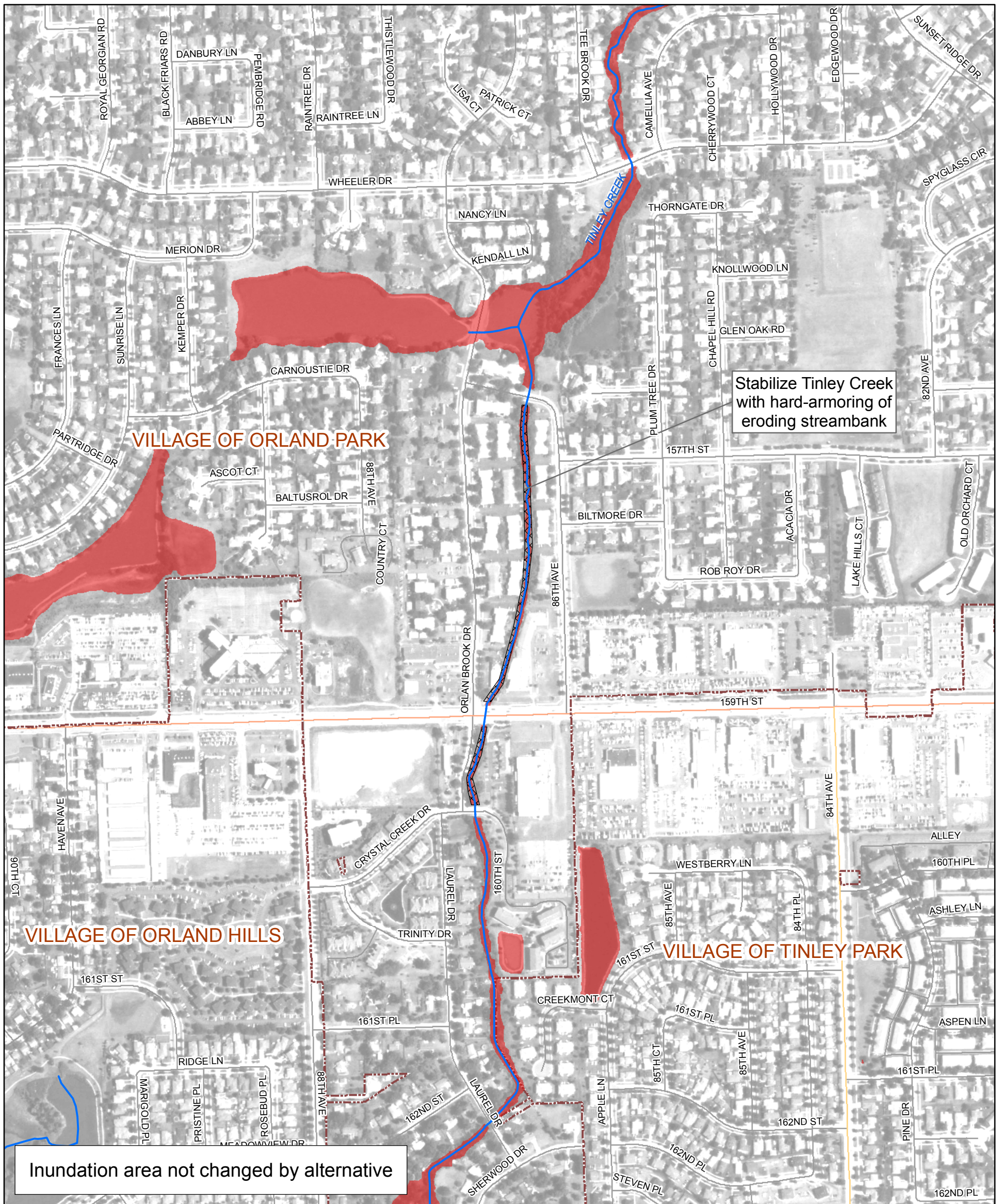
B/C Ratio: 1.03

LEGEND

- Project Alternative Location
 - 100-year Inundation Area With Project
 - 100-year Inundation Area Without Project
 - Calumet-Sag Channel
 - Watershed Boundary
- | | |
|--|--|
| <p>Roadway</p> <ul style="list-style-type: none"> Interstate US Highway Major Road Road | <ul style="list-style-type: none"> Municipal Boundary Cook County Boundary |
|--|--|
- 0 280 560
Feet

Figure 3.29.6
Tinley Creek
Alternative TICR-7
Existing and Alternative Inundation Areas
Calumet-Sag Channel Detailed Watershed Plan





Subwatershed: Tinley Creek

Alternative: TICR-8

Alternative Description:

Stabilize Tinley Creek to prevent erosion

Conceptual Level Cost: \$ 4,627,200

Benefits: \$ 7,164,900

B/C Ratio: 1.55

LEGEND

- Project Alternative Location
 - 100-year Inundation Area With Project
 - 100-year Inundation Area Without Project
 - Calumet-Sag Channel
 - Watershed Boundary
 - Roadway**
 - Interstate
 - US Highway
 - Major Road
 - Road
 - Municipal Boundary
 - Cook County Boundary
- 0 250 500
Feet

Figure 3.29.7

Tinley Creek

Alternative TICR-8

Existing and Alternative Inundation Areas

Calumet-Sag Channel Detailed Watershed Plan

